

ALLEN&HEATH

Parts identification sheet

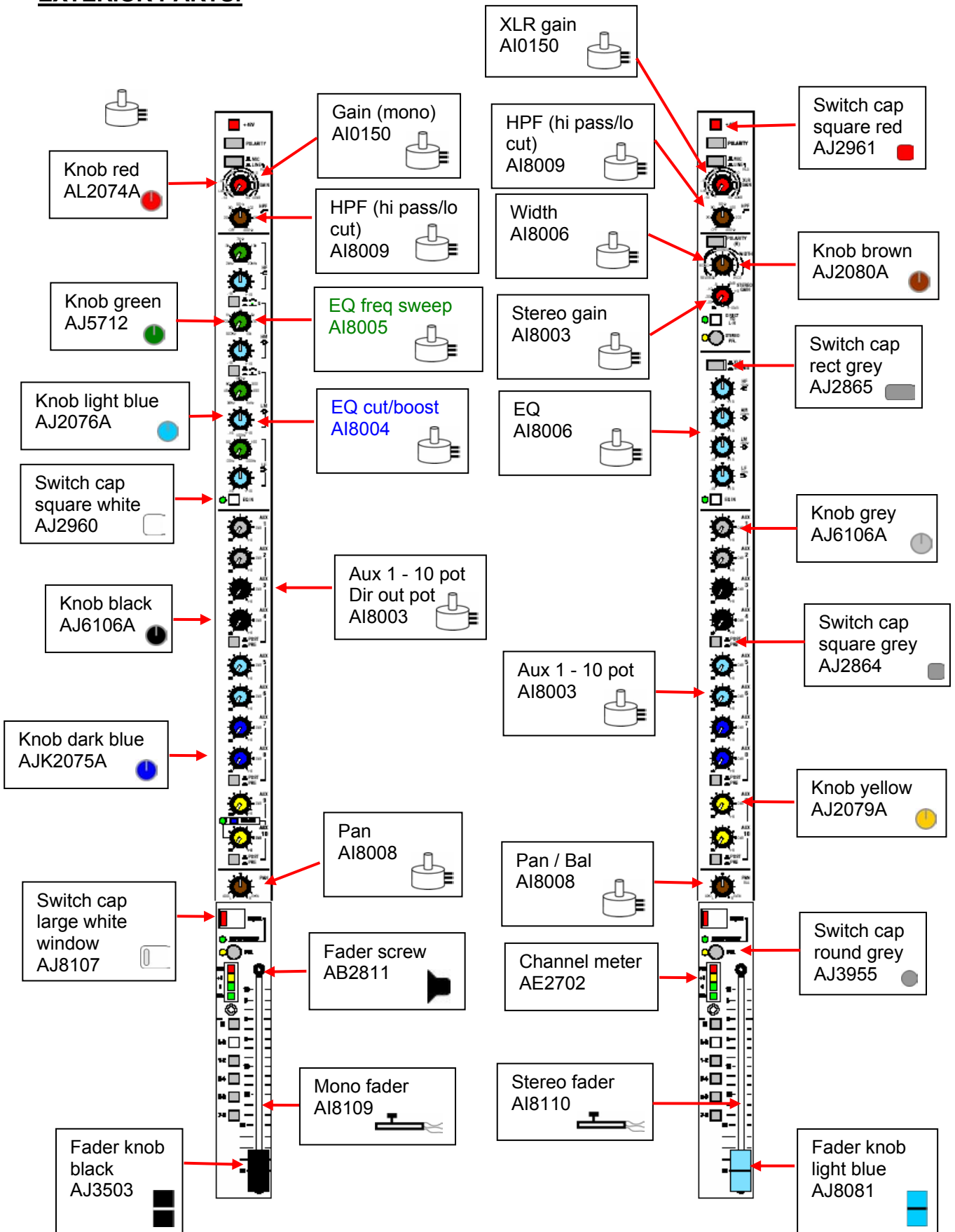
GL4800

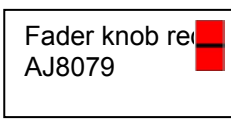
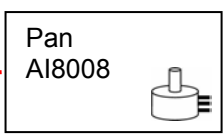
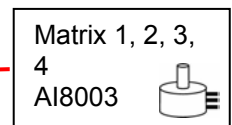
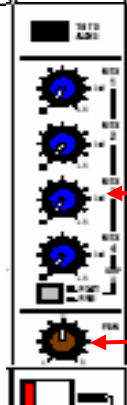
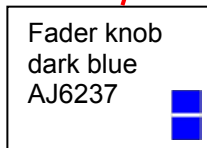
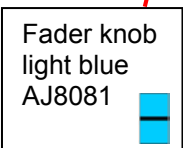
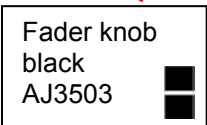
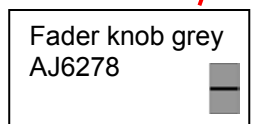
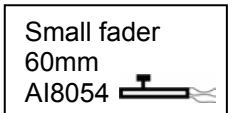
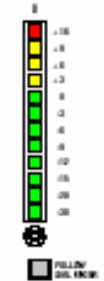
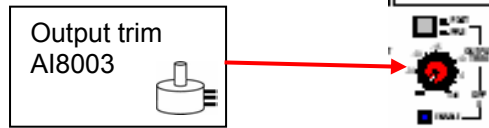
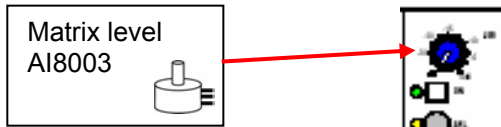
How to order parts

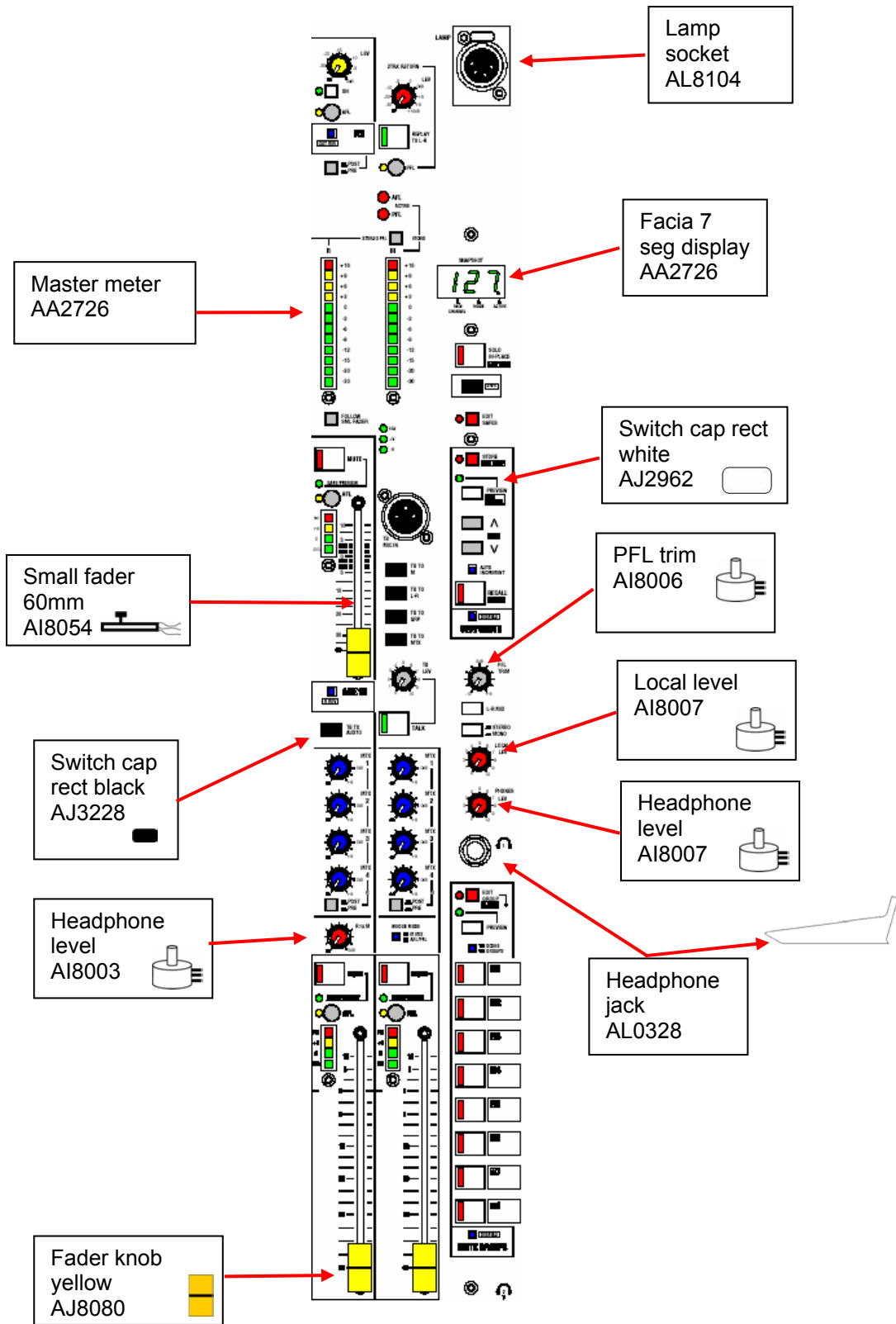
Parts must be ordered from our distributor in your territory. A list of international distributors can be viewed at <http://www.allen-heath.com/UK/distributors.asp>

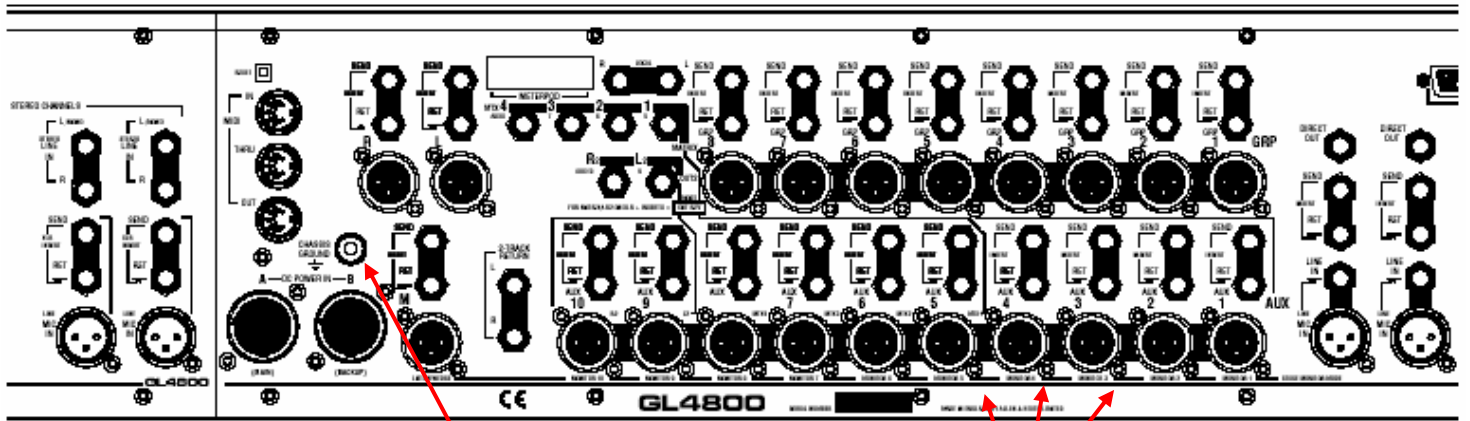
UK parts must be ordered through an appointed A&H dealer or service centre. A list of UK service centres can be viewed at http://www.allen-heath.com/UK/service_centres.asp

EXTERIOR PARTS:









Ground terminal post AL8106

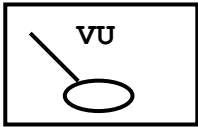
XLR screw AB2810

VU METERS:

VU Meters 1-6 003-421

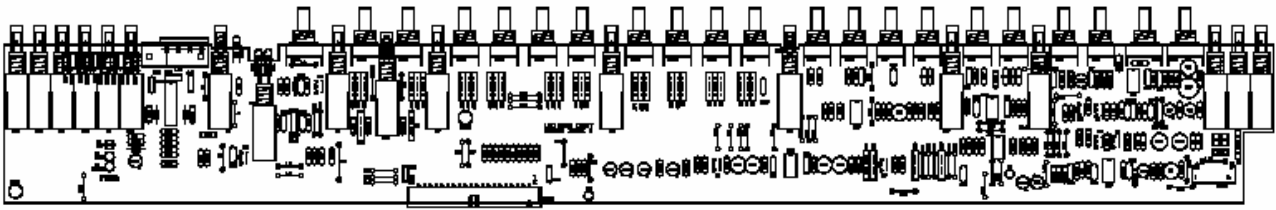


VU Master meters 003-422

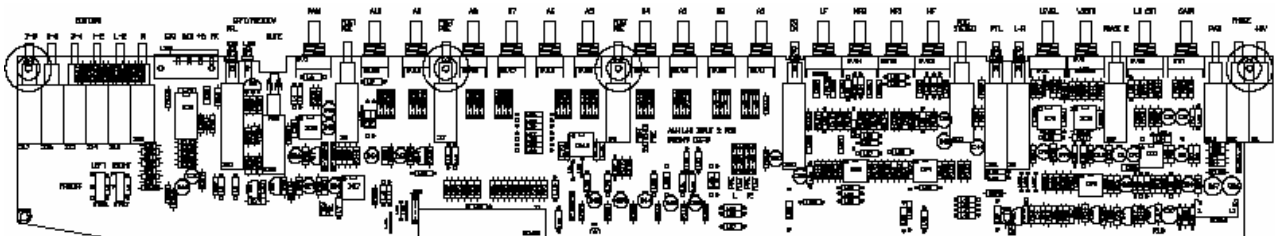


Individual VU meter AD6083

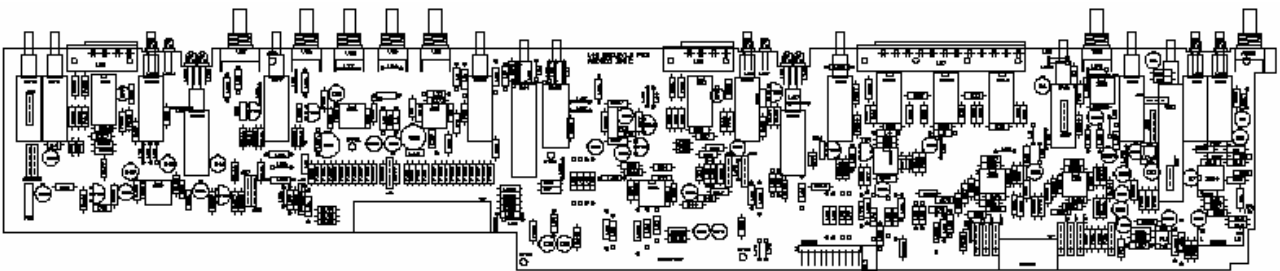
INTERIOR PARTS:



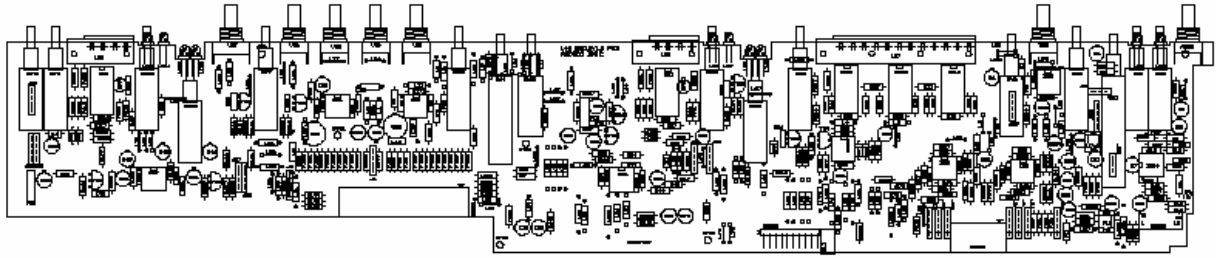
Mono i/p 003-410



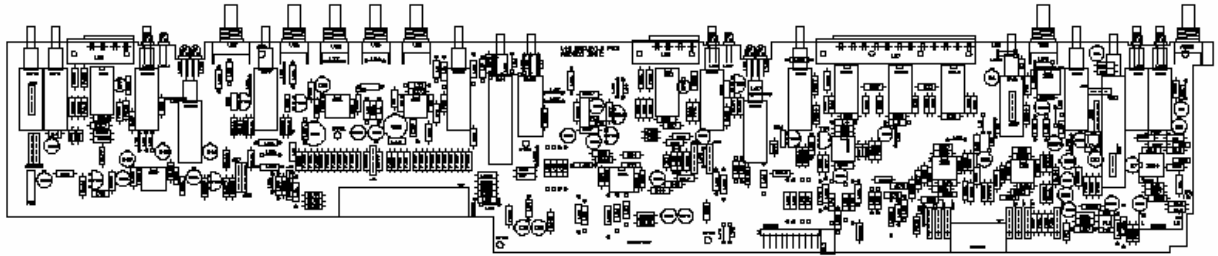
Stereo i/p 003-411



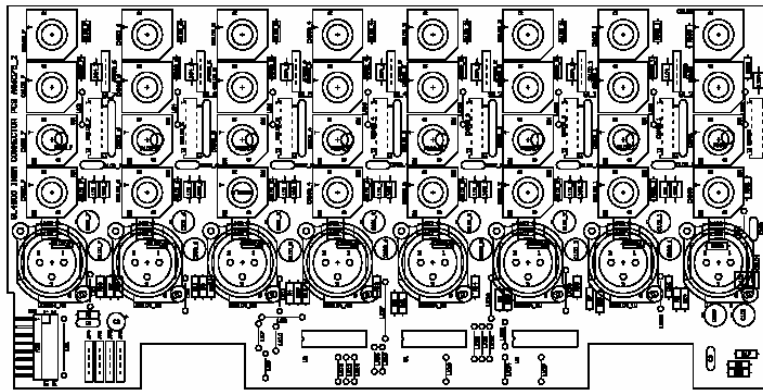
- Group 1 003-412-1
- Group 2 003-412-2
- Group 3 003-412-3
- Group 4 003-412-4
- Group 5 003-413-5
- Group 6 003-413-6
- Group 7 003-413-7
- Group 8 003-413-8



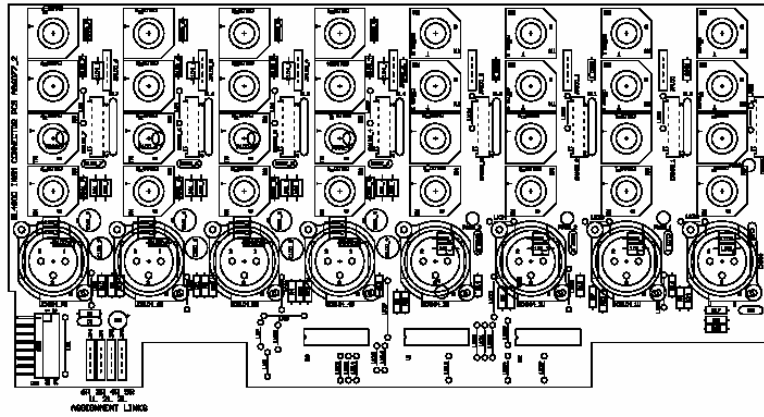
Left 003-411-L
Right 003-414-R



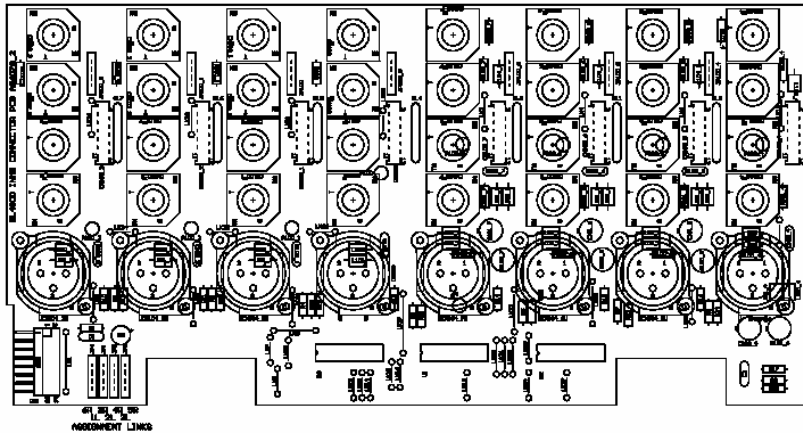
M (mono master) 003-415



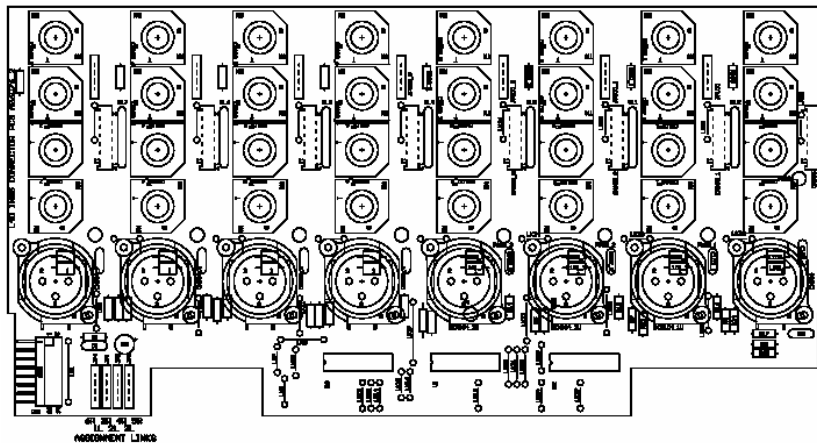
Mono i/p connector 003-416



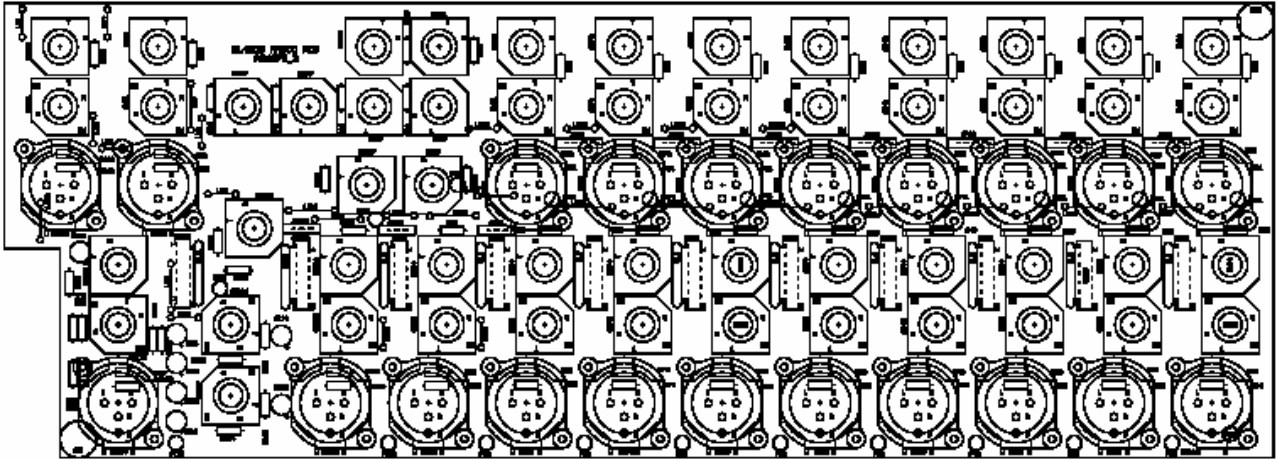
4 stereo 4 mono i/p connector 003-417



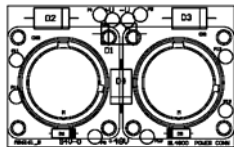
4 mono 4 stereo i/p connector 003-418



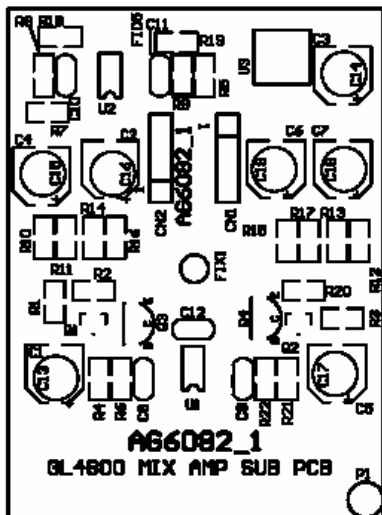
8 stereo i/p connector 003-419



Master connector 003-420



Power connector 003-423



Mix amp sub 003-452