

ALLEN&HEATH

Parts identification sheet

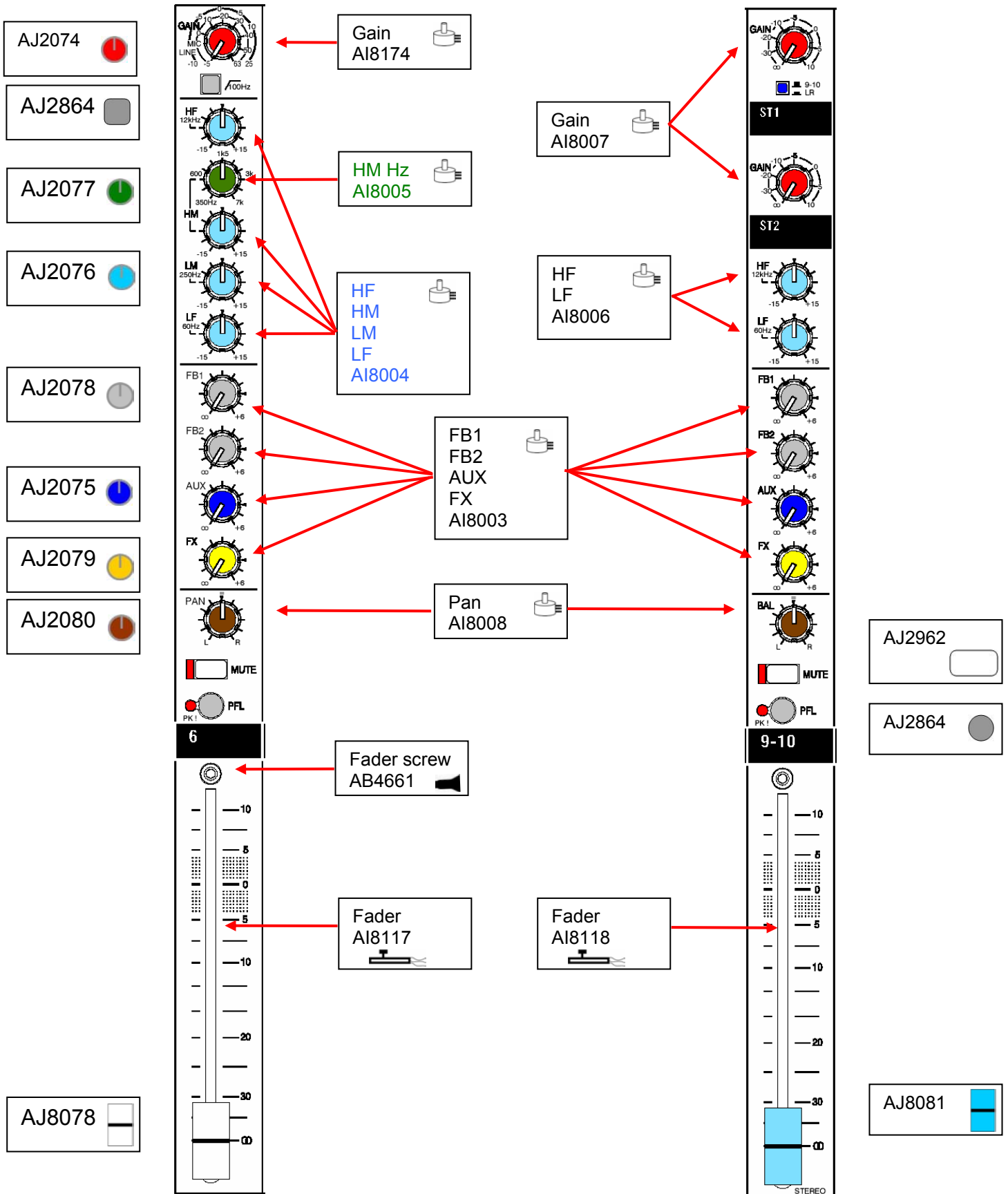
PA series all models

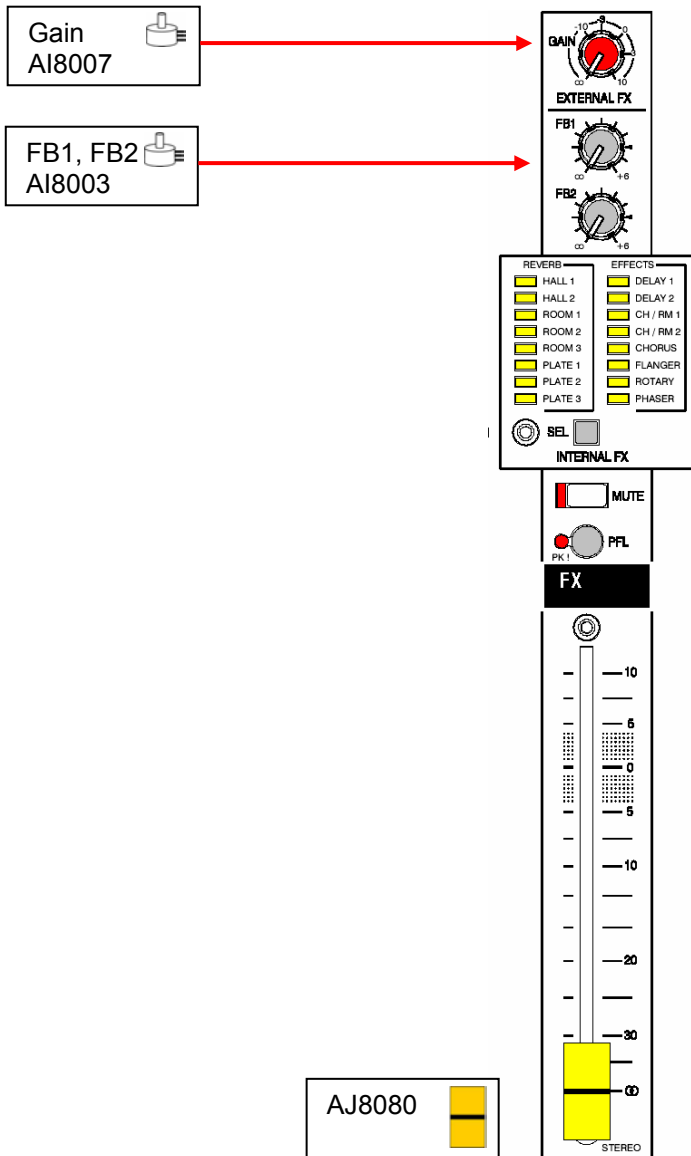
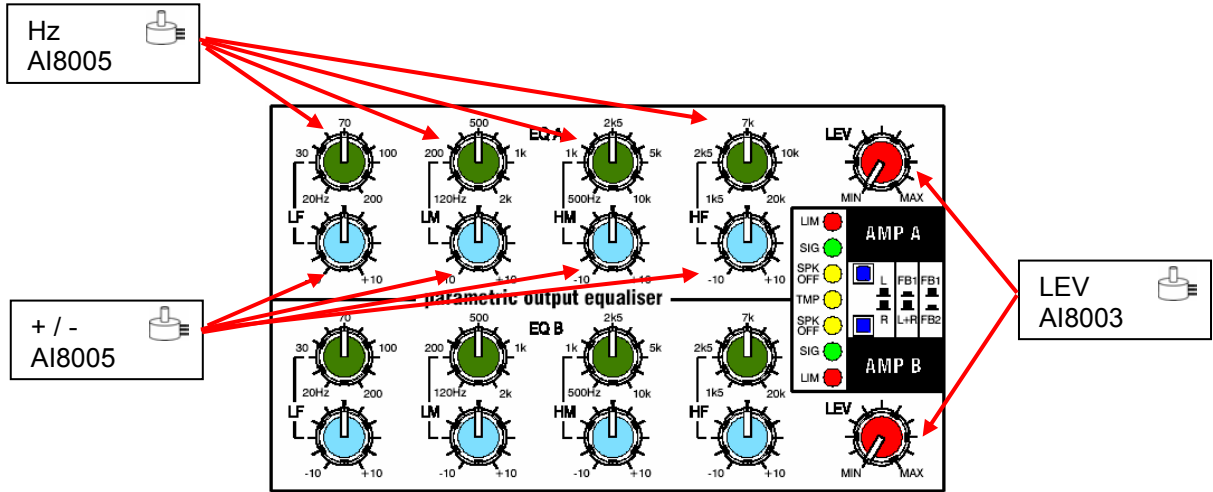
How to order parts

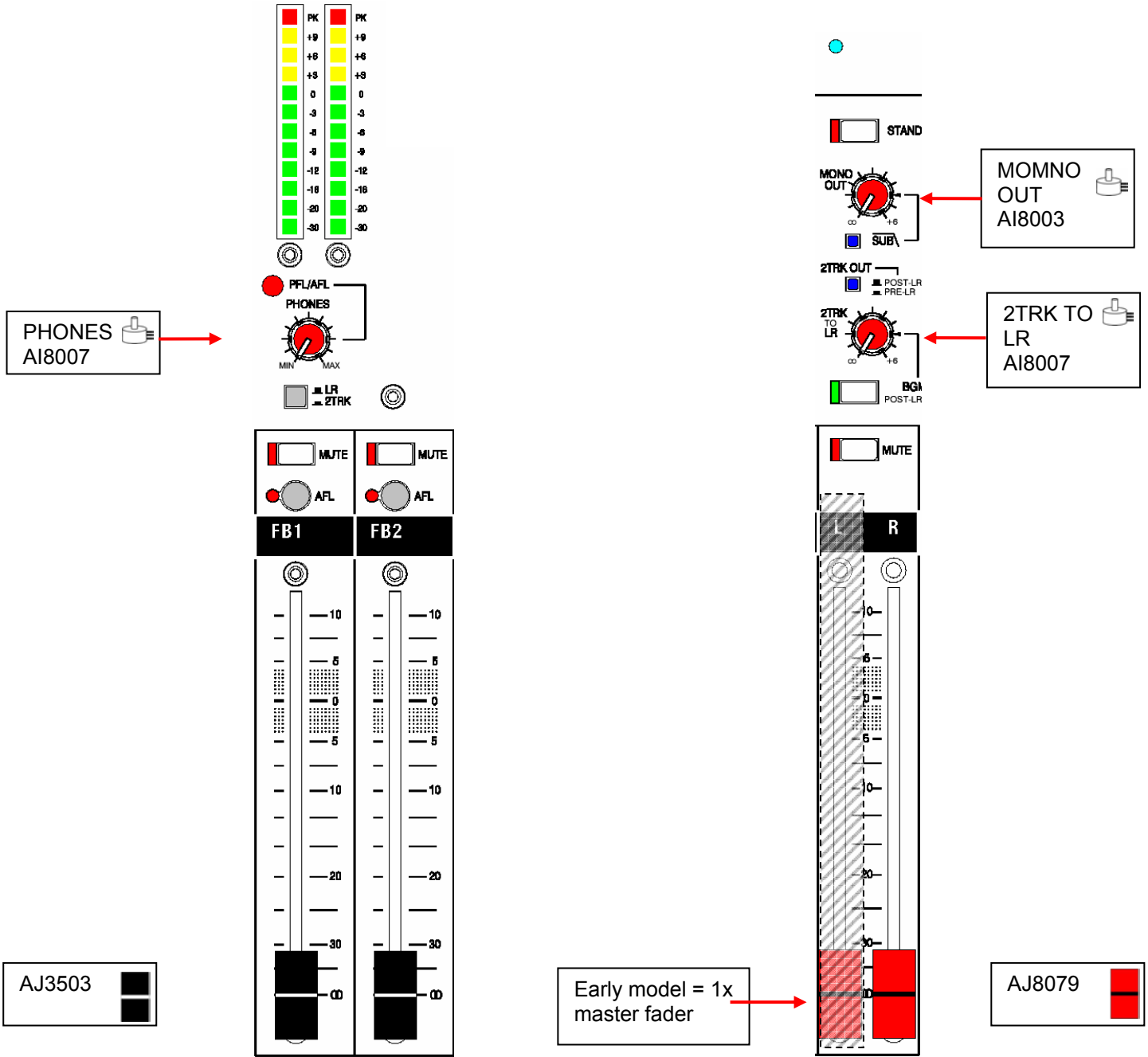
Parts must be ordered from our distributor in your territory. A list of international distributors can be viewed at <http://www.allen-heath.com/UK/distributors.asp>

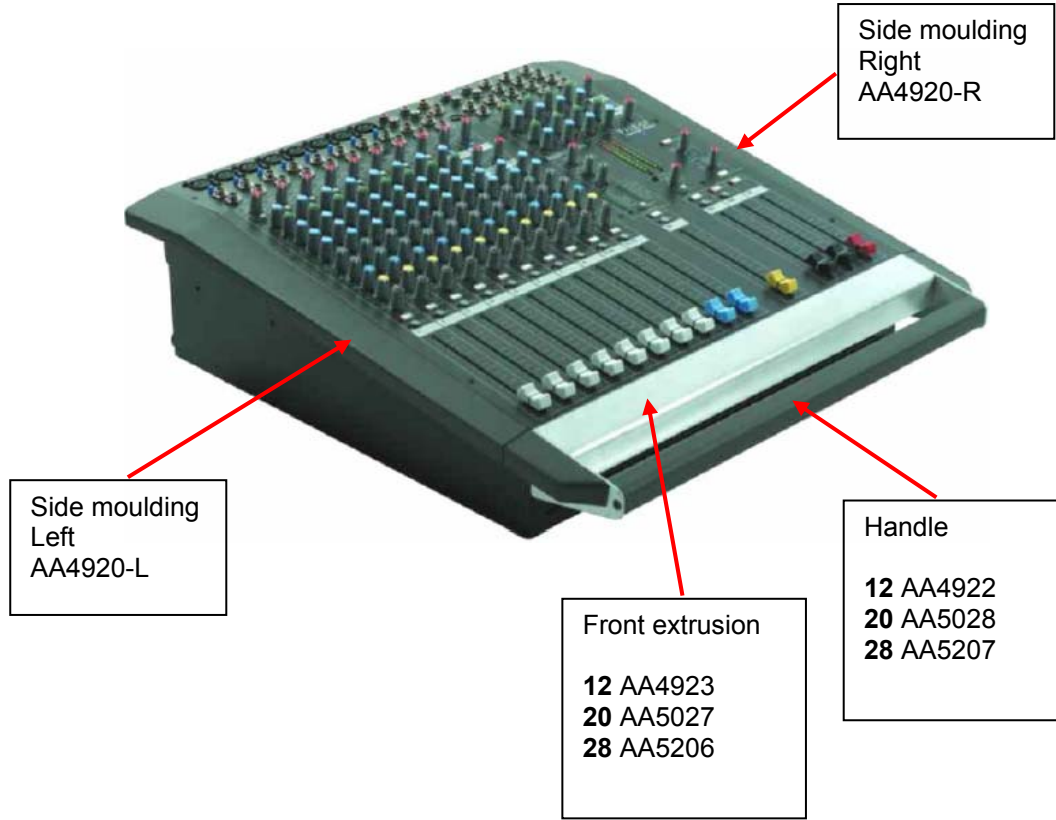
UK parts must be ordered through an appointed A&H dealer or service centre. A list of UK service centres can be viewed at http://www.allen-heath.com/UK/service_centres.asp

POTS FADERS & KNOBS:







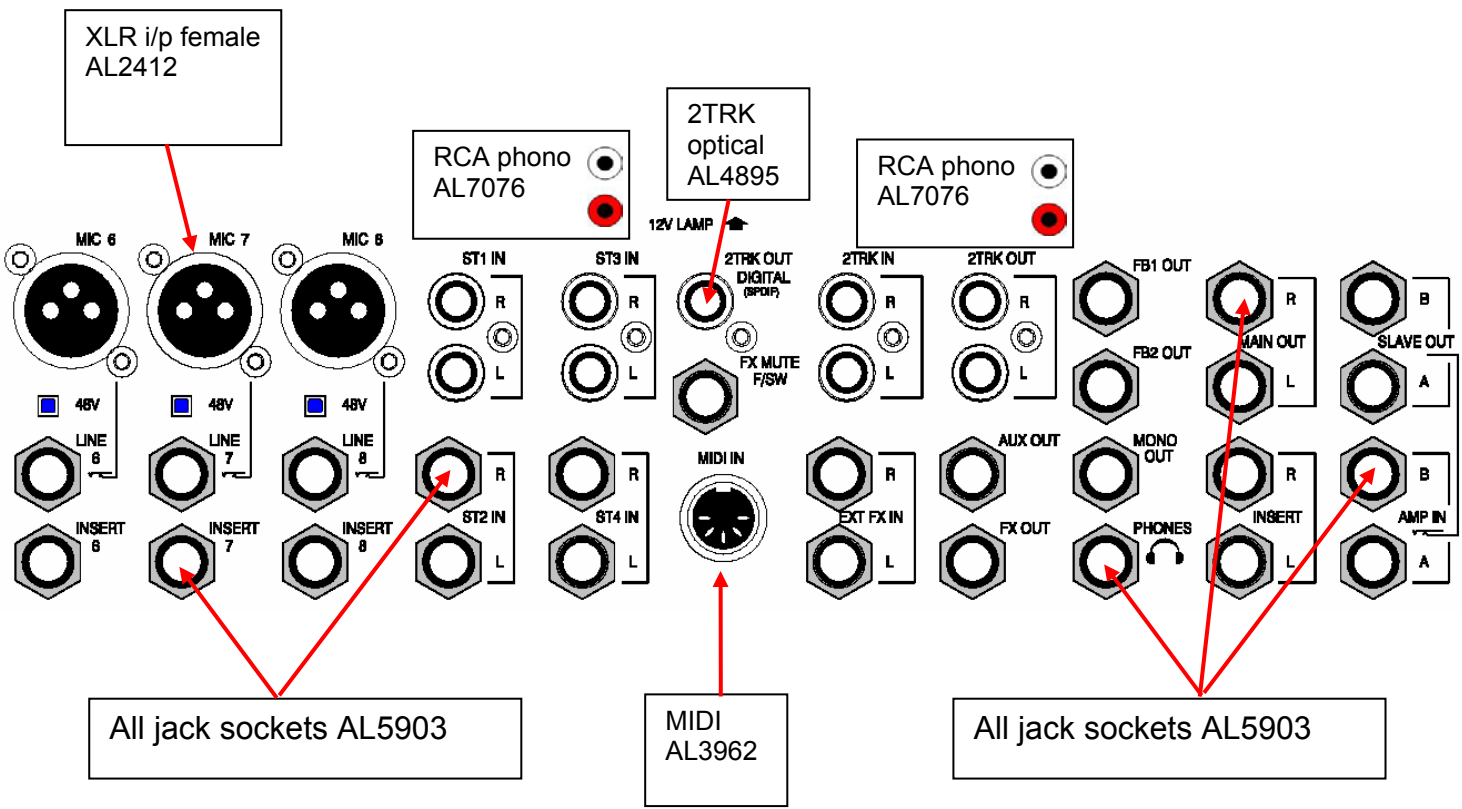


Side moulding
Left
AA4920-L

Side moulding
Right
AA4920-R

Front extrusion
12 AA4923
20 AA5027
28 AA5206

Handle
12 AA4922
20 AA5028
28 AA5207



XLR i/p female
AL2412

RCA phono
AL7076

2TRK
optical
AL4895

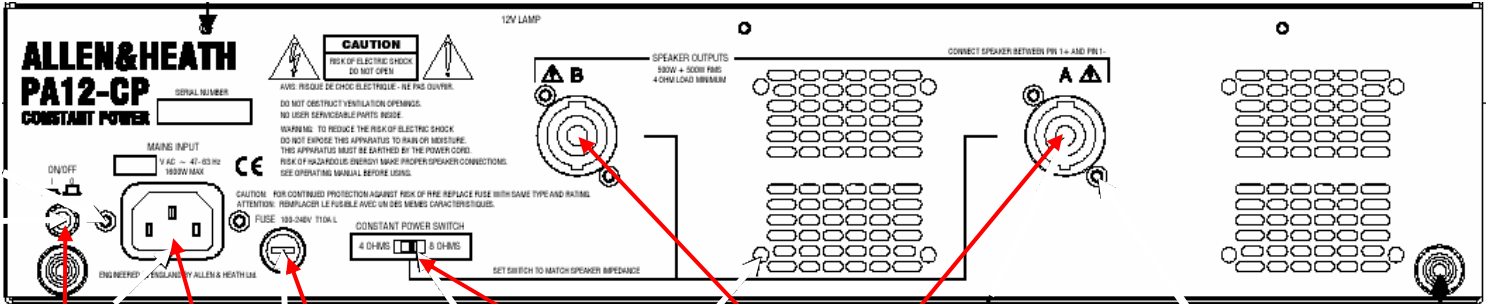
RCA phono
AL7076

All jack sockets
AL5903

MIDI
AL3962

All jack sockets
AL5903

CP



AC switch
AL3338

Fuse holder
AL3178

4 ohm
8 ohm
switch
AL5071

Speakon
AL8126

Cooling fan
AM4959



Button
AJ2887

AC inlet
AL5118

Un-powered

Fuse holder
AL3178



AC switch
AL3338

AC inlet
AL3458

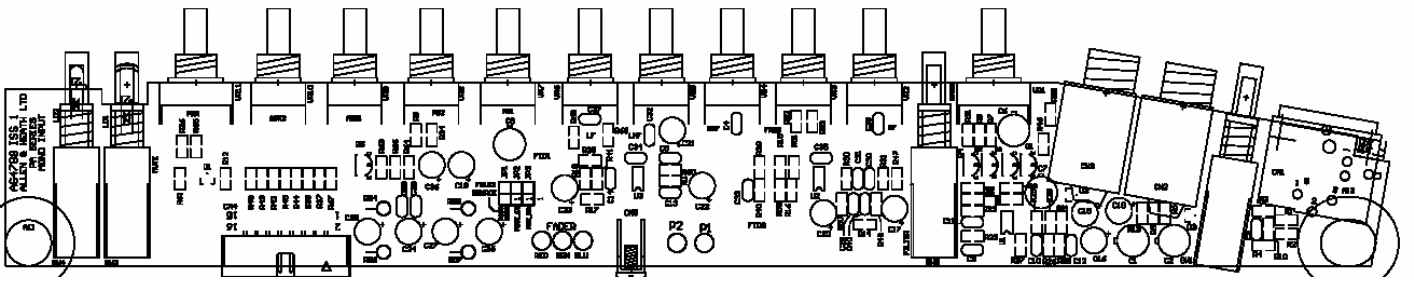
Cooling fan
AM6601

XLR o/p male
AL2411

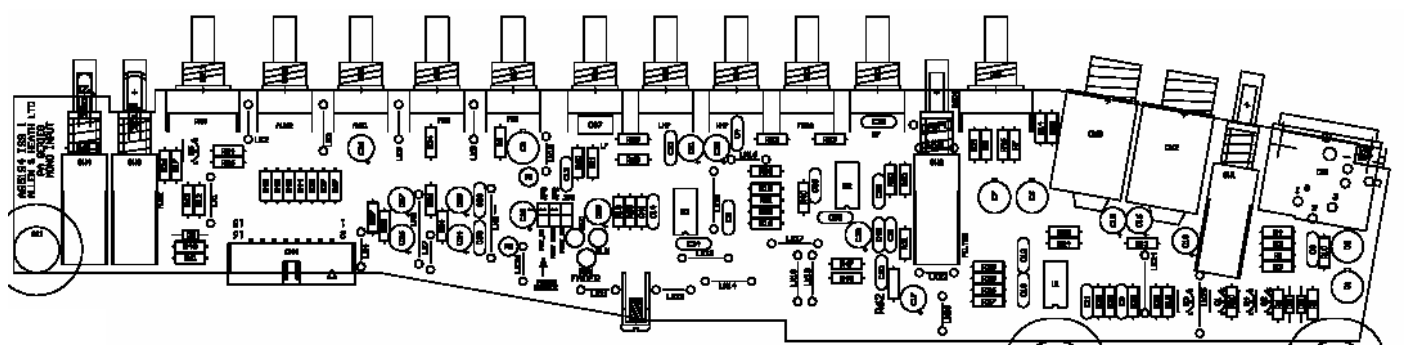


**NOT ON
PA12 !**

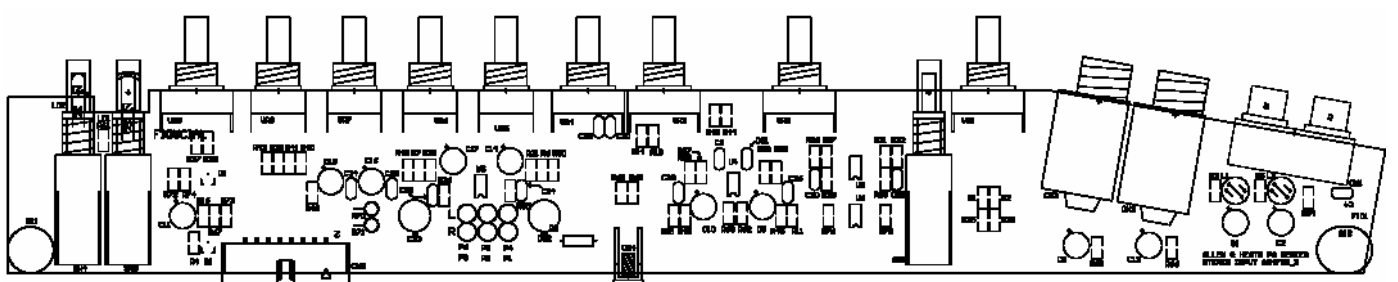
INTERIOR PARTS:



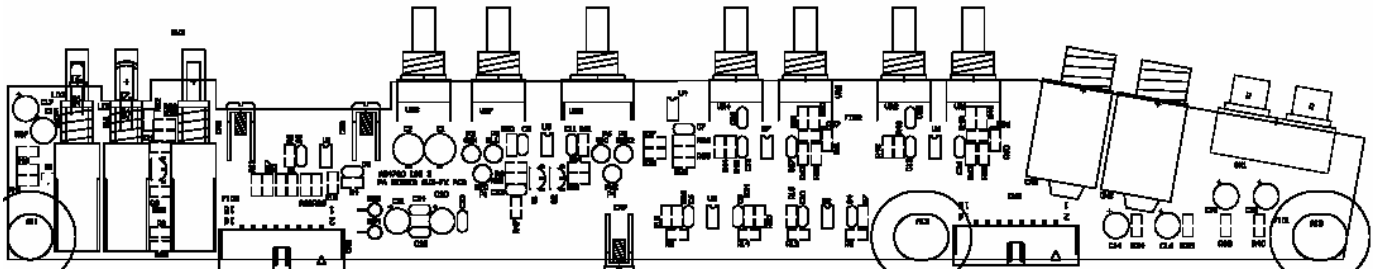
CP Mono i/p 003-034



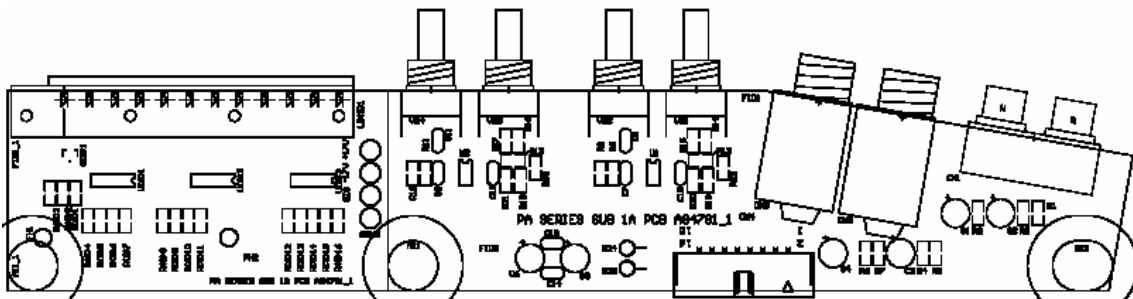
Un-powered Mono i/p 003-091



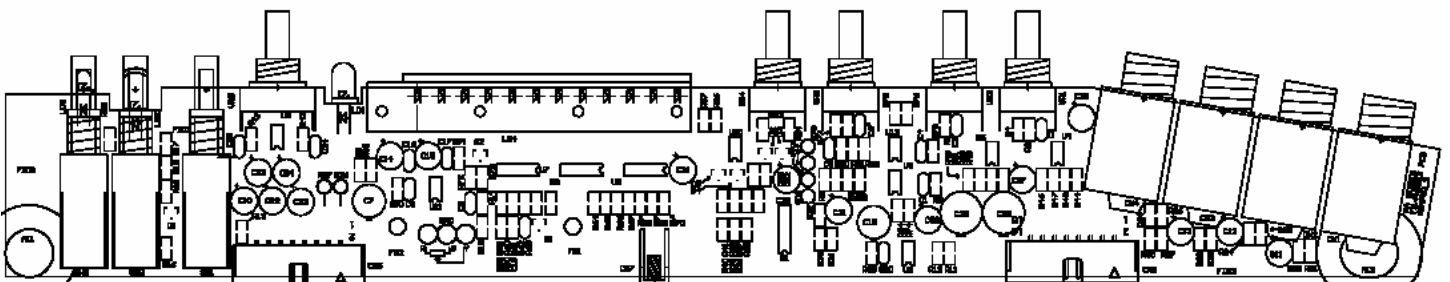
Stereo i/p 003-035



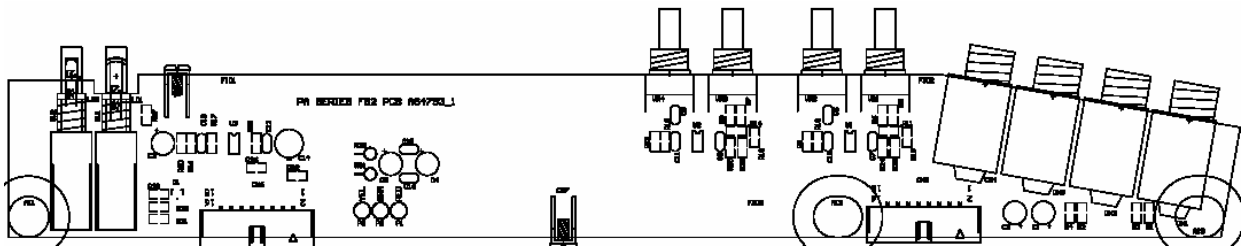
AUX FX 003-036



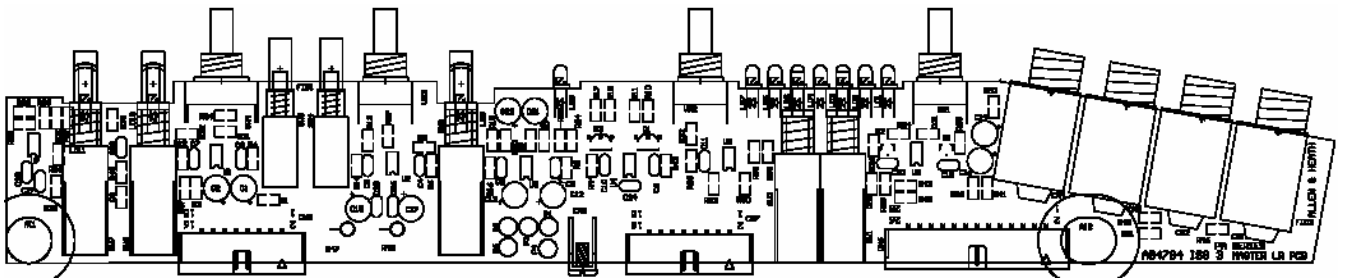
Sub 1 003-037



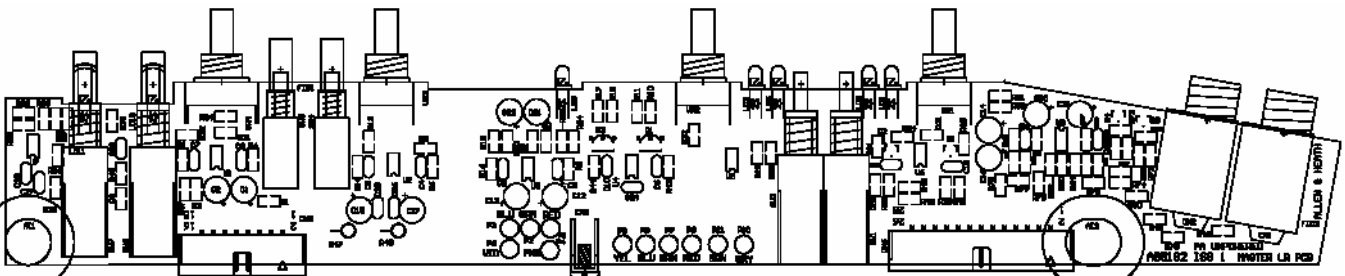
FB1 / Phones 003-038



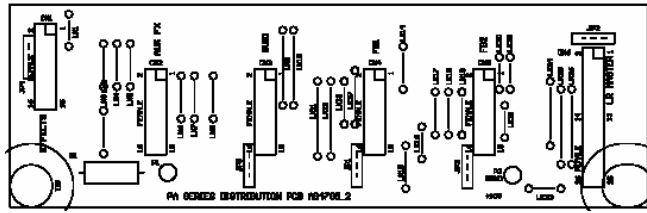
FB2 003-039



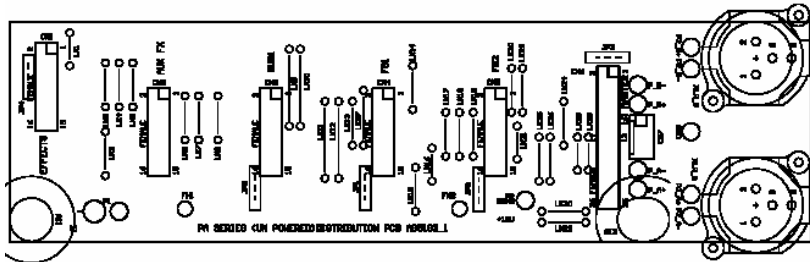
CP master LR 003-040



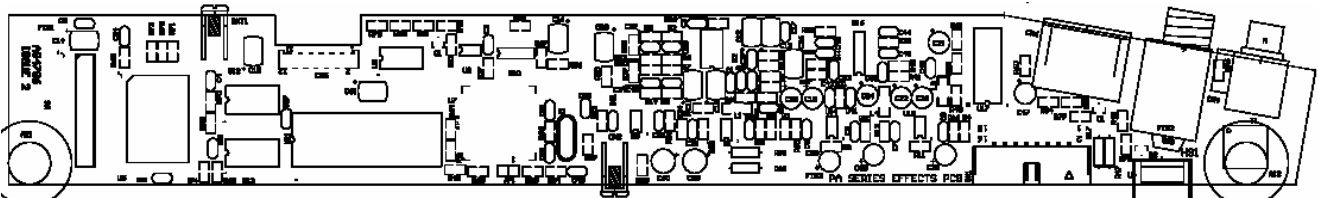
Un-powered master LR 003-092



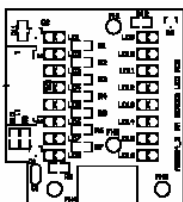
CP Distribution 003-041



Un-powered distribution 003-093

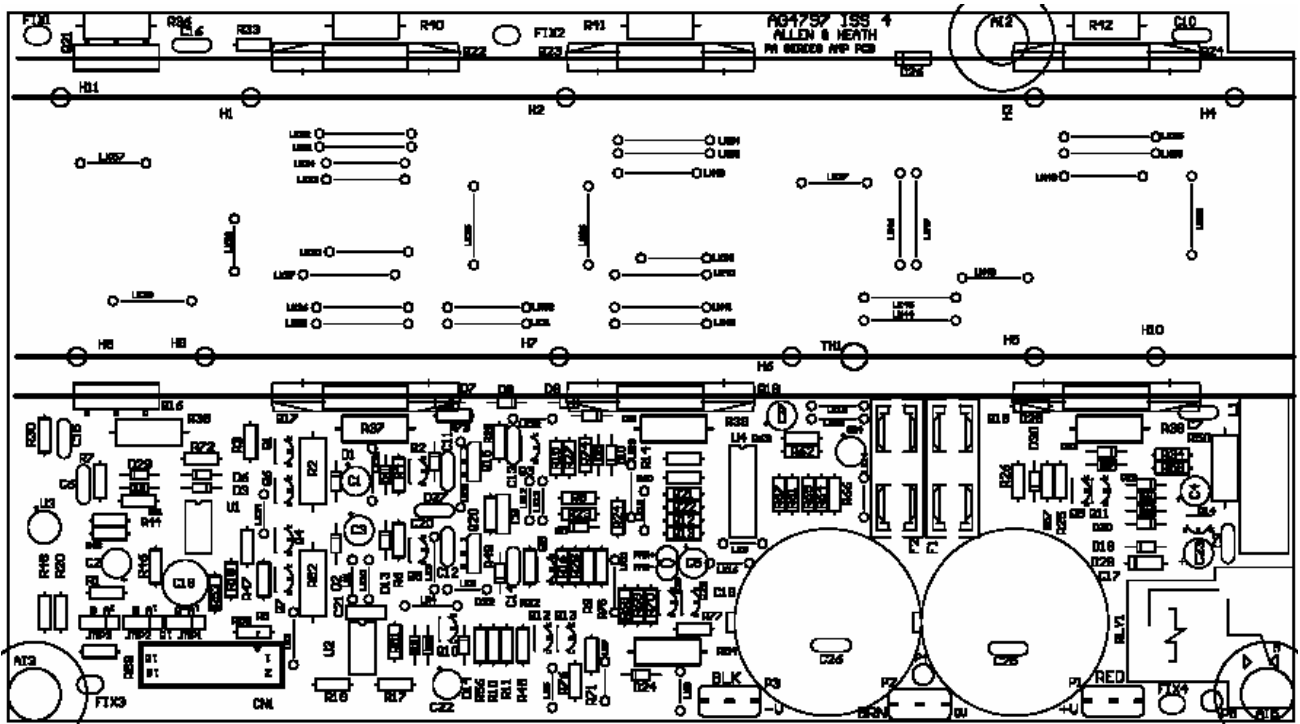


FX 003-042

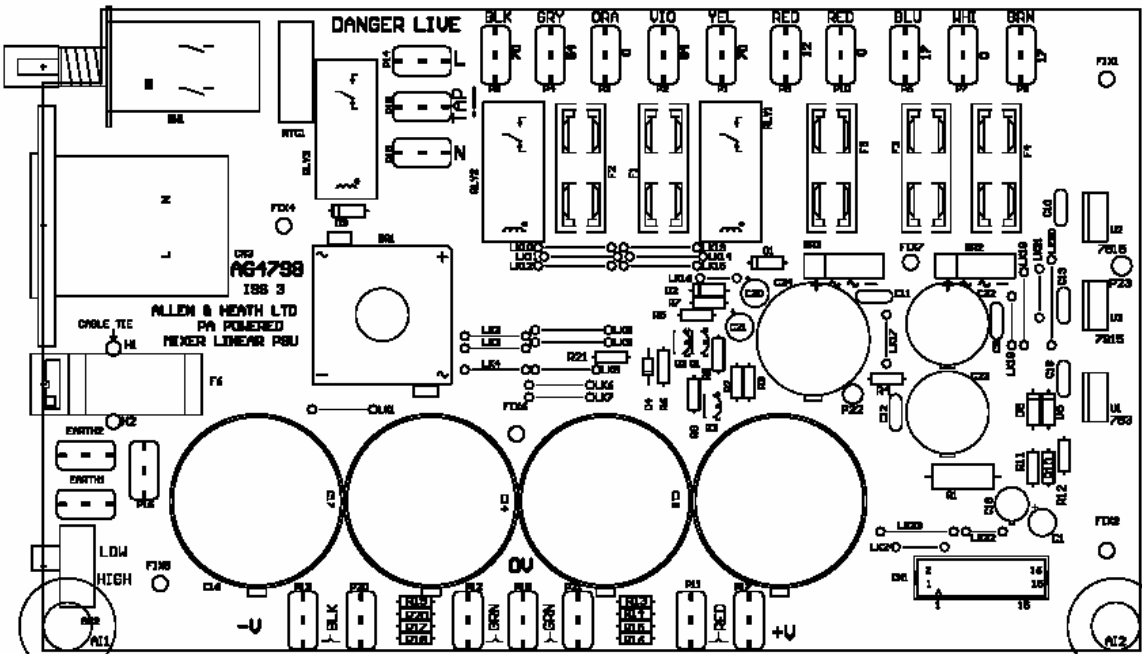


FX LED PCB 003-474 **Yellow** FX LED

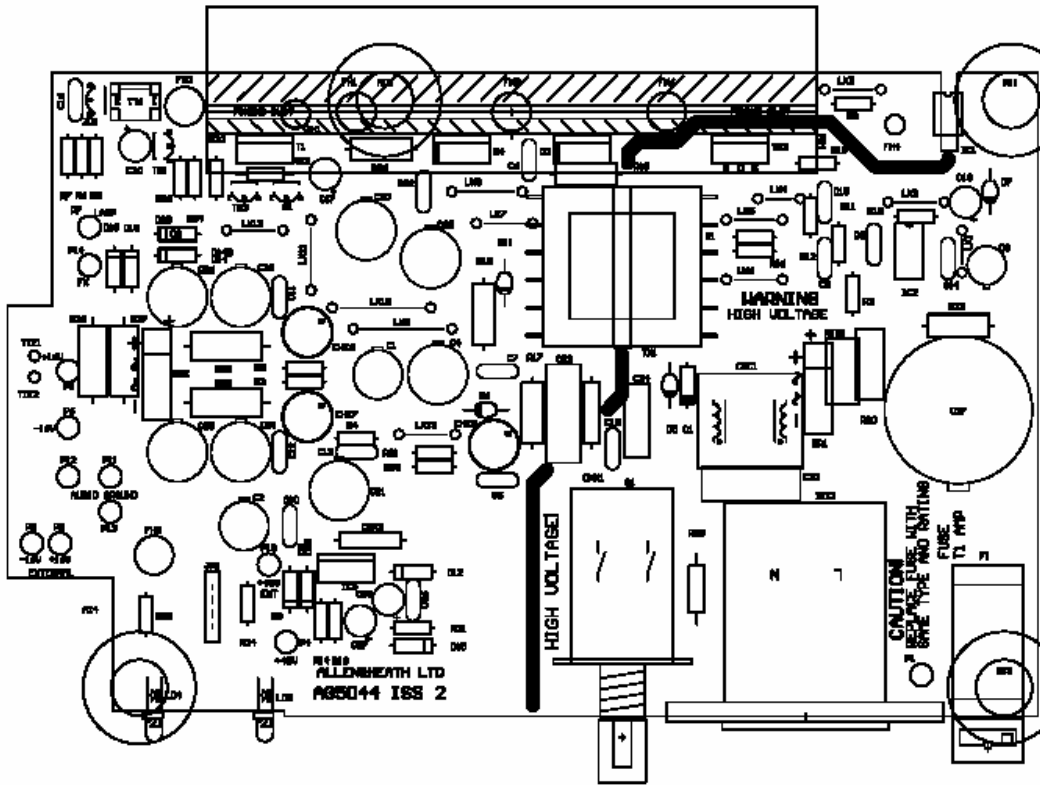
FX LED PCB 003-070 **Green** FX LED



CP amplifier PCB 003-043



CP linear PSU 003-069



Un-powered PSU 003-094