

ALLEN&HEATH

Parts identification sheet

ZED R-16

How to order parts

Parts must be ordered from our distributor in your territory. A list of international distributors can be viewed at <http://www.allen-heath.com/UK/distributors.asp>

UK parts must be ordered through an appointed A&H dealer or service centre. A list of UK service centres can be viewed at http://www.allen-heath.com/UK/service_centres.asp

EXTERIOR PARTS:

Side moulding
Left AA6741-L
Right AA6741-R



Mono channel

Push button
square grey
AJ7210



Knob blue
AJ6949



Knob blue
AJ2075A



Knob black
AJ6106A



Push button
round grey
AJ3955



Knob grey
AJ2078A



Push button rect
white
AJ7180



Push button
square white
AJ7211



Push button round black
AJ4251



Fader knob white
AJ8078



Gain AI3838



HF AI8004



Q A6718



G AI8004



F AI8009



LF AI8004



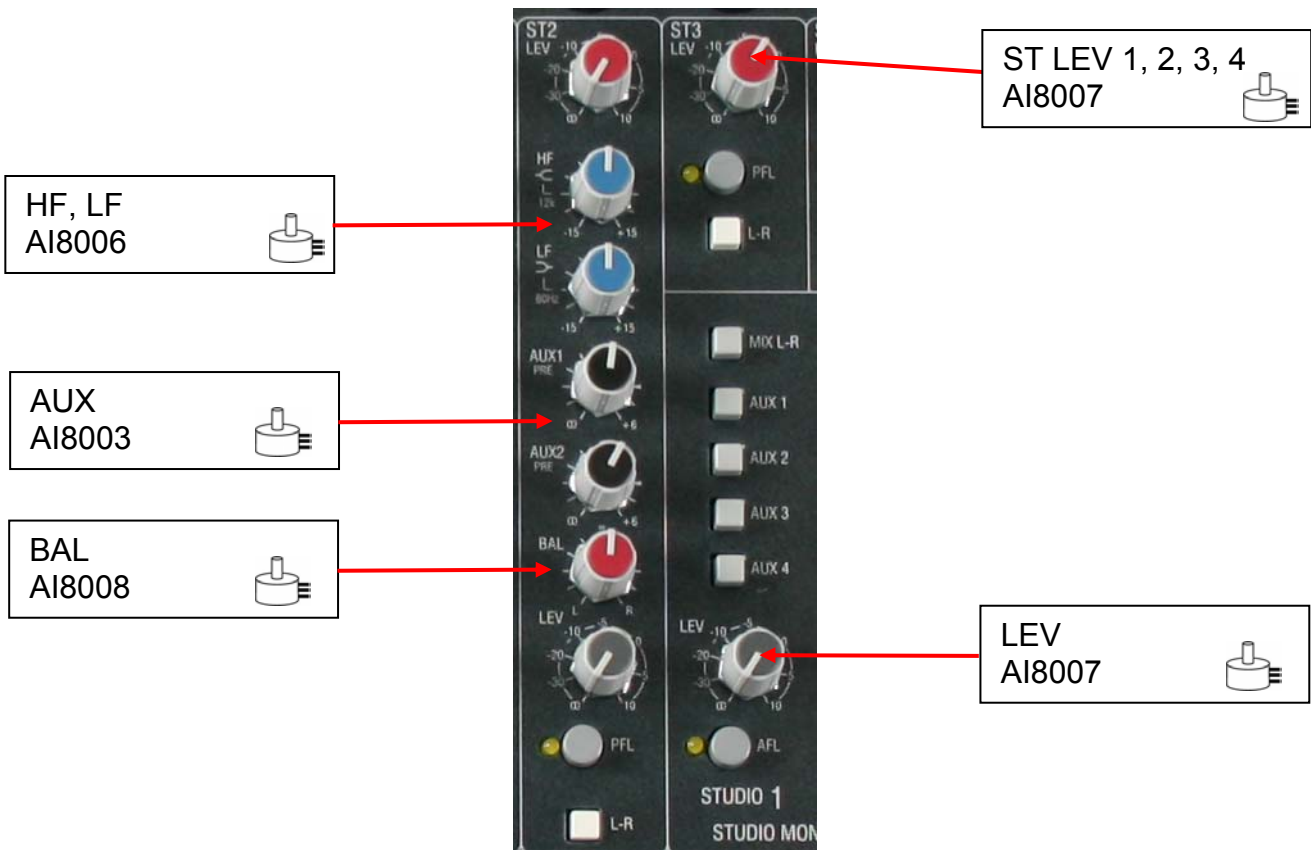
AUX AI8003



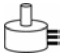
Fader 60mm
AI3661



Stereo channels





AUX masters

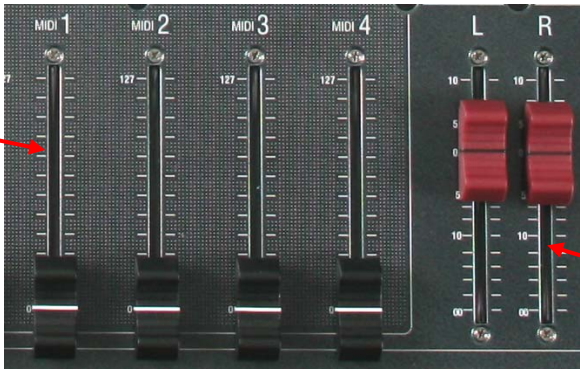
AUX masters 1, 2, 3, 4
AI8003 



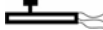
MIDI & LR master faders

MIDIFader 60mm
AI4999 

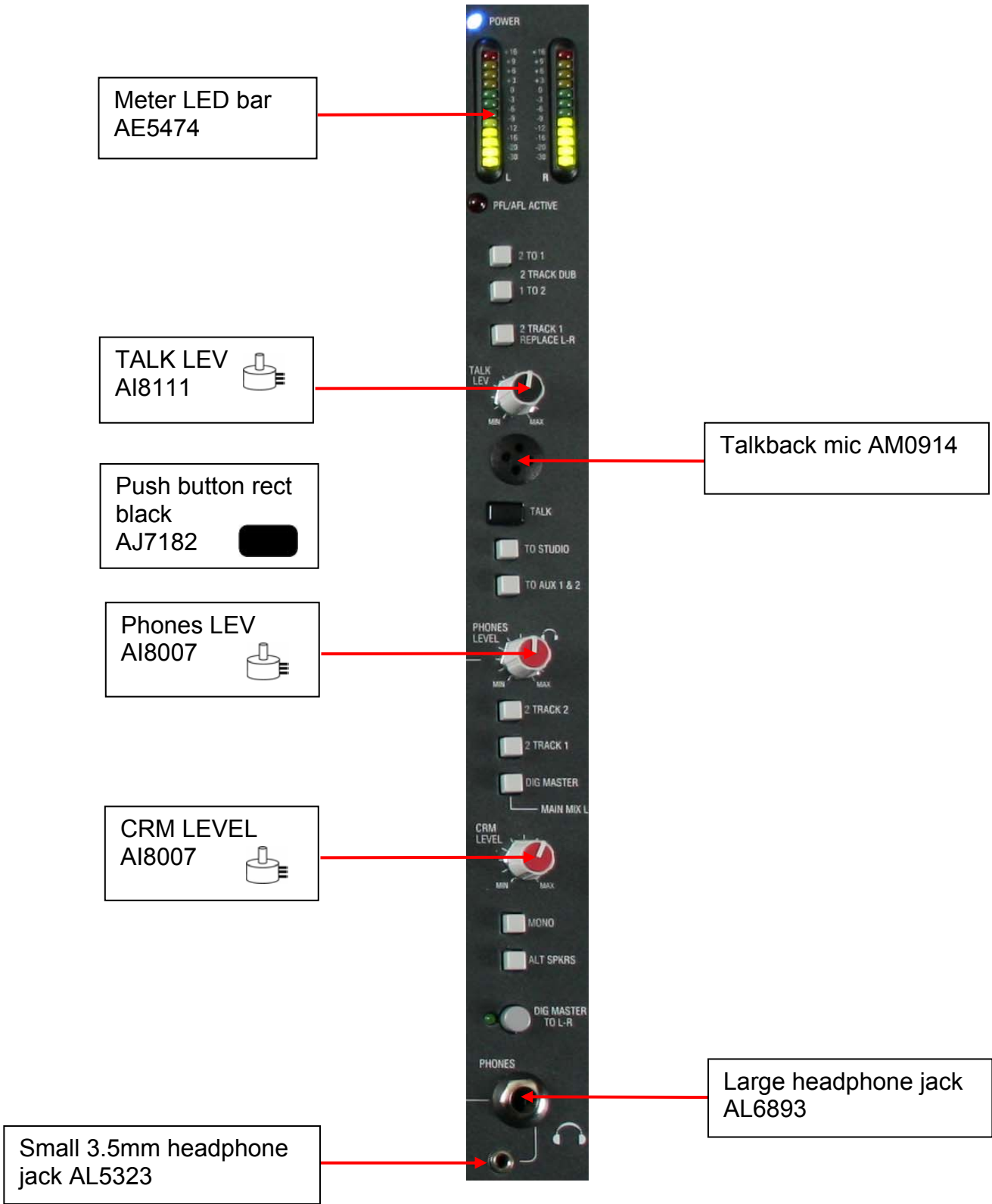
Fader knob black
AJ6278 



Fader knob bergundy
AJ86950 

LR master Fader
60mm
AI3497 

Monitor section



MIDI & keymat

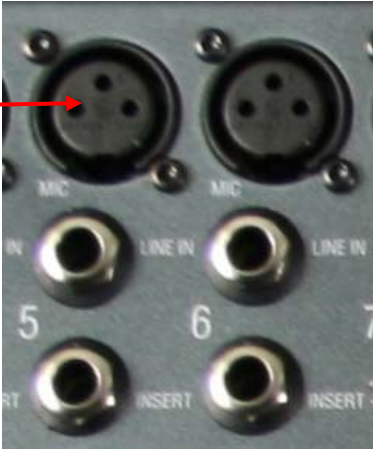
MIDI
AI6718 



Rubber Key mat
AA67081

Connectors

Mic XLR AL2412



RCA phono AL6830

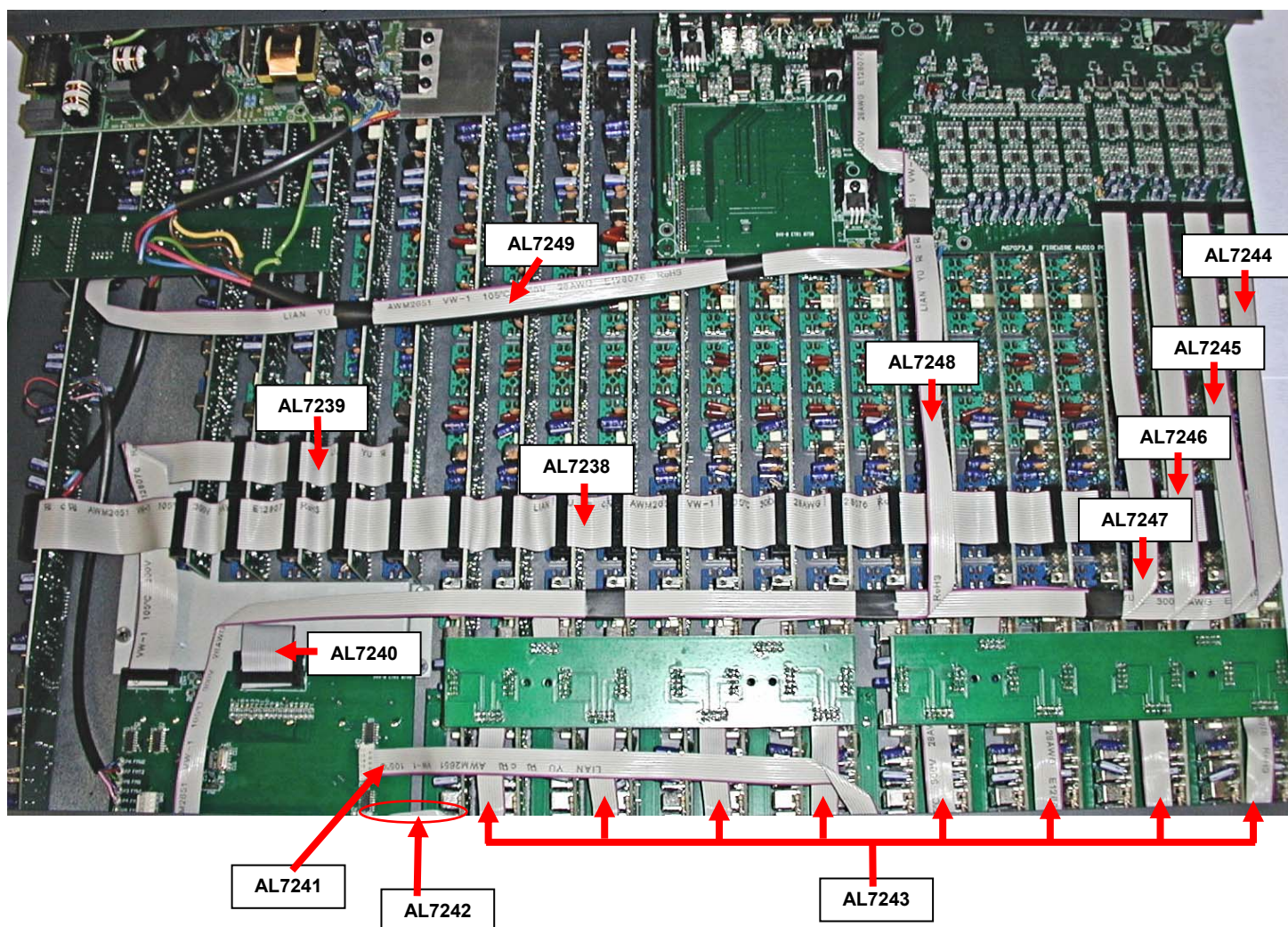
O/P XLR AL2413

RCA phono AL6830



All Jacks are **AL6893**

INTERIOR PARTS:



AL7238 main

AL7239 stereo / studio to fader master

AL7240 keypad to fader master

AL7241 fader 1 to fader master

AL7242 fader 2 to fader master

AL7243 fader to fader distribution

AL7244 firewire 1 to fader distribution

AL7245 firewire 2 to fader distribution

AL7246 firewire 3 to fader distribution

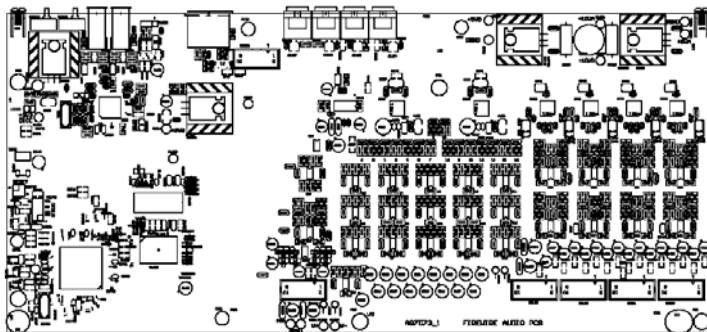
AL7247 firewire 4 to fader distribution

AL7248 firewire to fader master

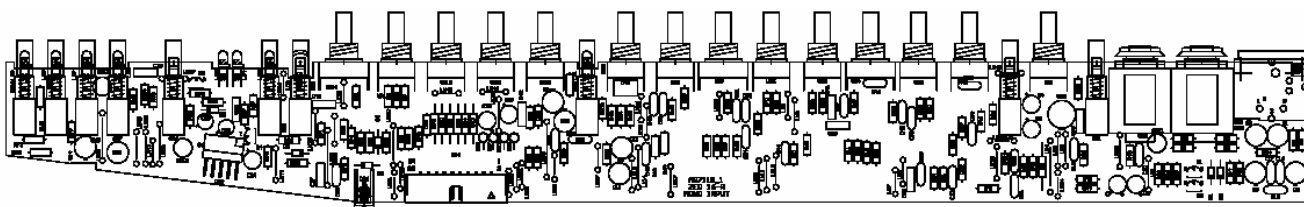
AL7249 firewire to master distribution

Harnesses

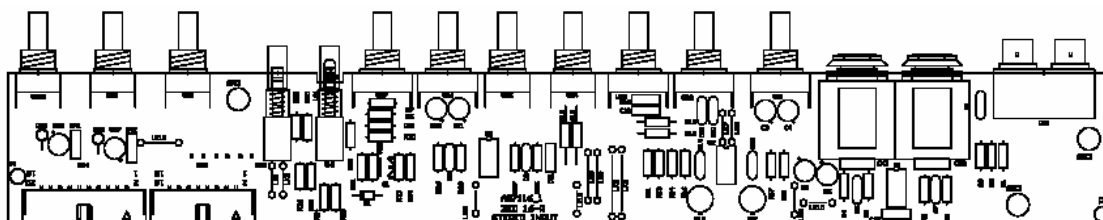
PCB



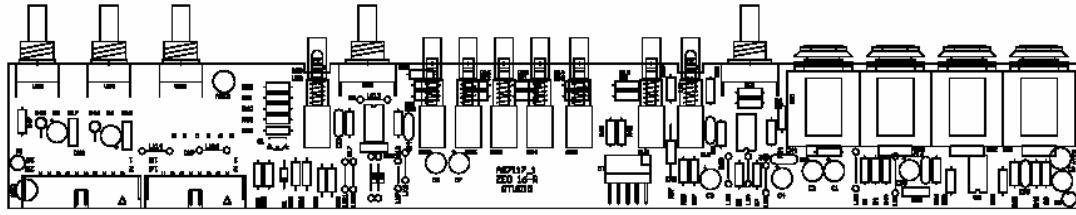
Firewire audio 003-816



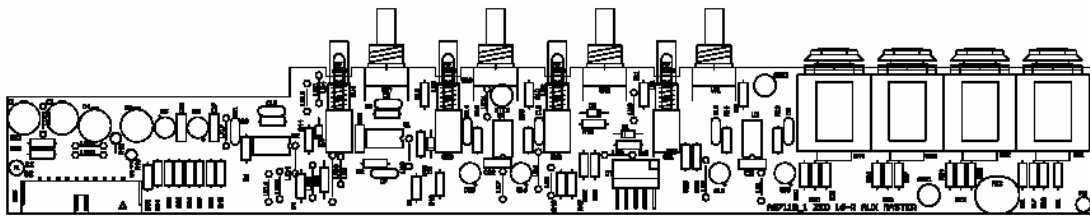
Mono i/p 003-817



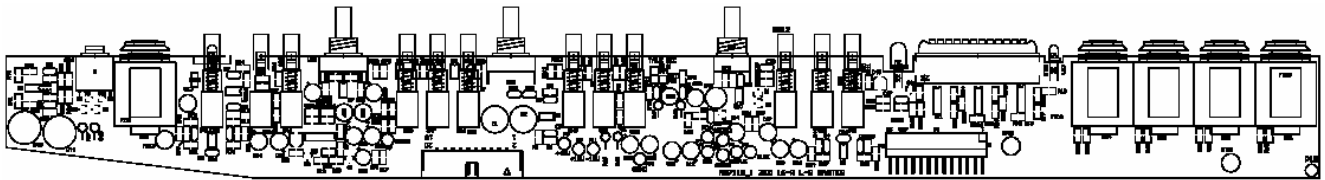
Stereo i/p 003-818



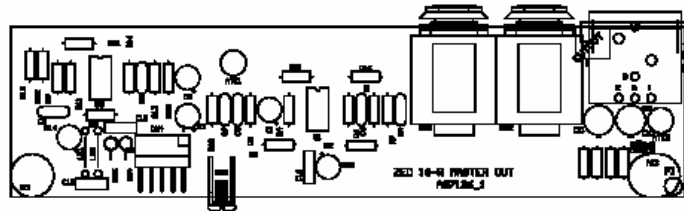
Studio PCB 003-819



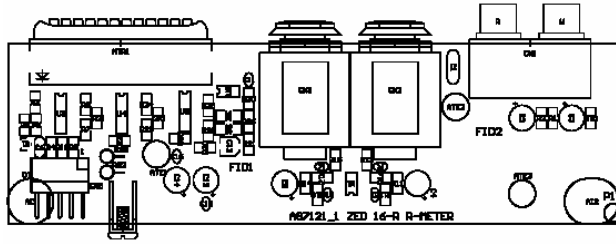
Aux master 003-820



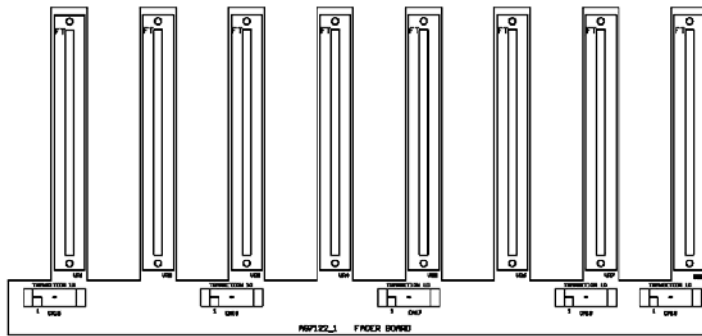
Master LR 003-821



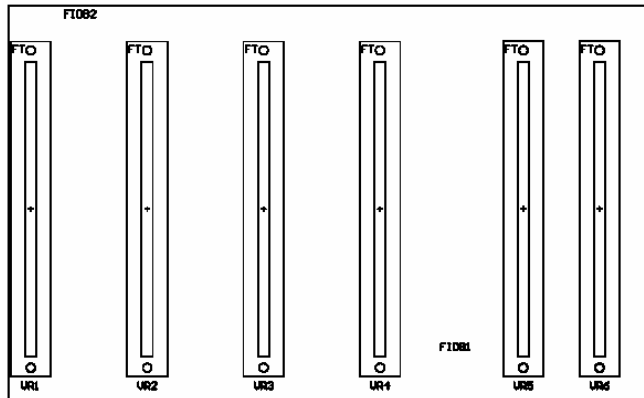
Master out 003-822



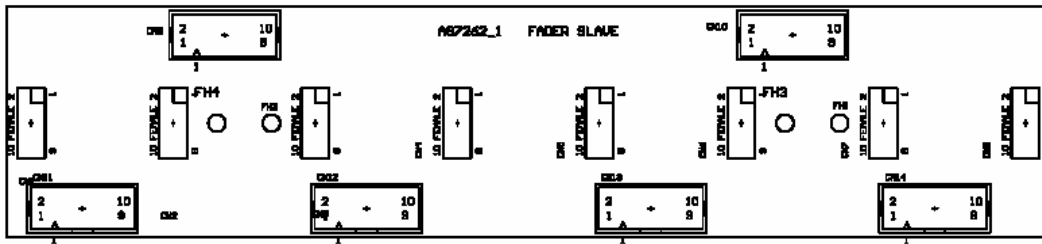
Meter R 003-823



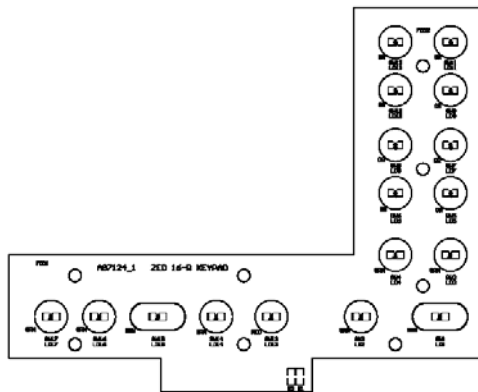
Fader 1 003-824
Fader 2 003-827



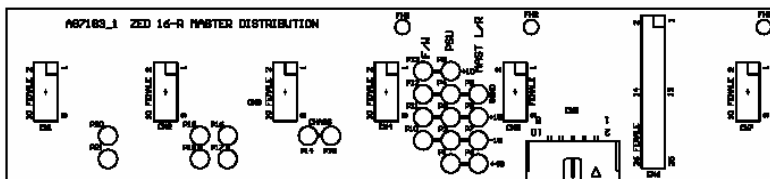
Fader master 003-825



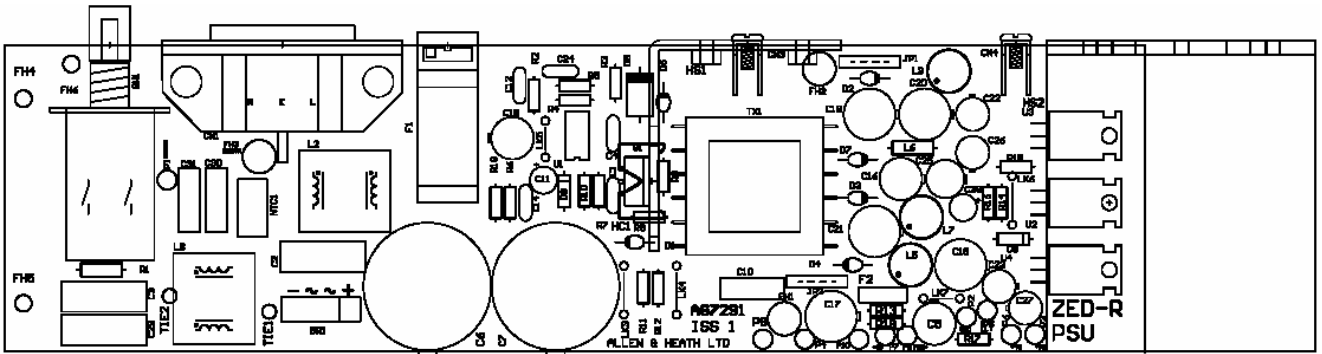
Fader slave 003-851



Keypad 003-826



Master distribution 003-828



PSU 003-849