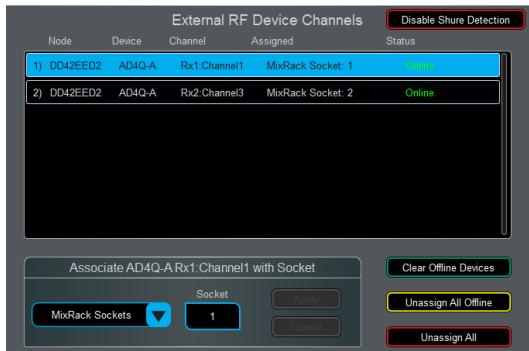


### Shure RF Integration

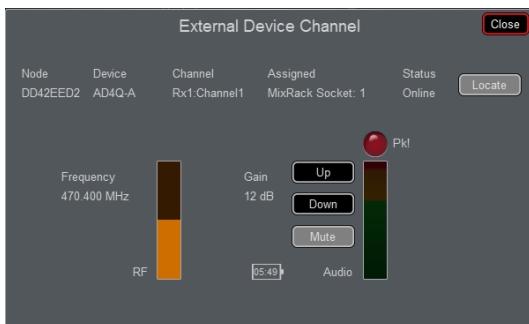
Connect up to 45 Shure digital wireless receivers (ULX-D, QLX-D, Axient Digital) to your dLive system for both monitoring and control of key parameters.



Management of connected Shure devices is performed in **MixRack / Config / RF Devices**, which provides an overview of all online and offline Shure receivers.

Here you can associate a Shure wireless channel with a dLive input socket (analogue or Dante)

The **RF Info** box - which displays the battery level, RF signal strength and the Shure receiver audio signal level - is visible in the **Processing / Preamp** tab of all input channels associated with a Shure RF receiver.



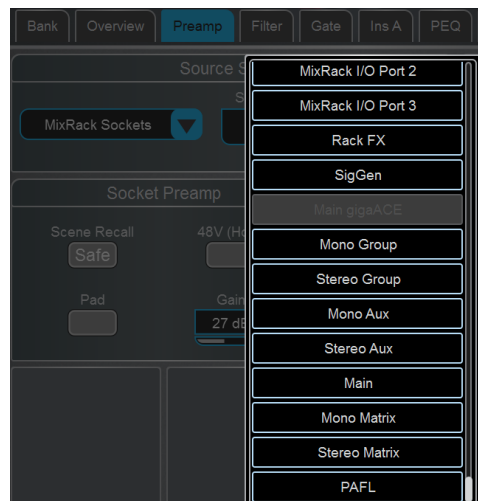
Pressing anywhere in the RF Info box opens the **External Device Channel** window which allows control of the Shure receiver gain levels and mute status.

**Processing / Bank** also displays the Shure receiver battery level, RF signal strength and peak indication on each channel associated with a Shure RF receiver.

### Mix Freedom

Multiple new routing and patching options to unlock your dLive and open up new creative and operational possibilities:

- Input to Matrix
- MIX to Input
- PAFL to Input
- MIX to PAFL Ext In
- MIX to MIX Ext In
- Follow / Invert main pan for stereo MIX buses



## Workflow Enhancements

Speed up and customise your workflow:

- Custom MIDI on Scene Recall
- Specify Range or Audio Taper for IP Controller faders and rotaries
- AMM input metering point select
- AMM input PAFL source select
- Units show on LCD for Soft Rotary Function
- Values shown on East Widget sends
- Mute status shown on Meter Page and Meter Widget (inc AMM)
- LPF default now 10kHz
- Mic Pre/Trim values shown on LCD
- Source Selector now includes AUX and MAIN as inputs and MTX for output

## Support for new hardware

- DX164-W
- PRIME I/O Modules

