



This release updates Microsoft Windows® PC system, ASIO compatible, Device Drivers for XONE:23C Bundle also includes v1.0.5 Audio Firmware update for improved USB Soundcard connection.

Xone Product	XONE:23C	
Device Driver (PC)	v2.9.95.2	[X23C_v29952.exe]
Audio Firmware	v1.0.5	[FWUpdater_X23C_v105.exe]

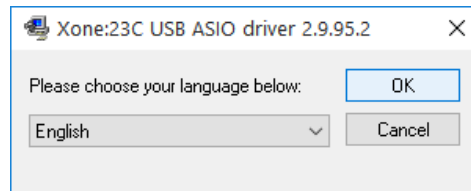


**PLEASE FOLLOW INSTALL & UPDATE INSTRUCTIONS CAREFULLY**

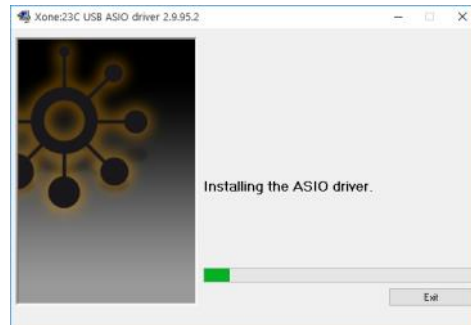
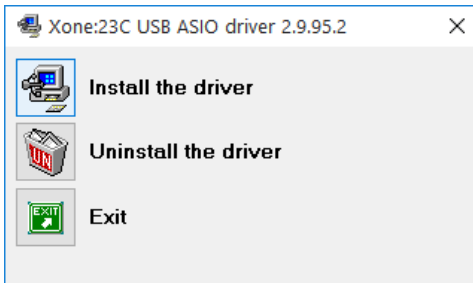
- ❗ Install v2.9.95.2 Windows® system Device Drivers as described below in Step 1
- ❗ Followed by checking/upgrading mixer Audio Firmware to v1.05, as in Step 2.

**Step 1: Installing new Device Drivers**

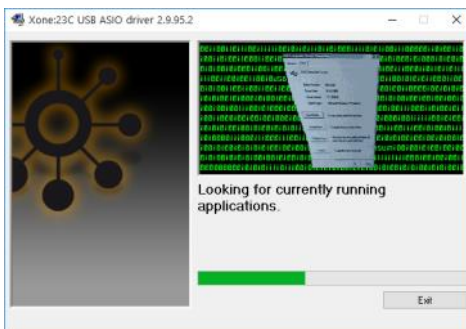
- ❗ Ensure your XONE mixer is **disconnected** from the host PC and powered **OFF**
- ❗ **NOTE:** Please ensure you are logged on with Administrator access enabled
- 🔗 Extract the contents of the **X23C\_29952.zip** bundle to your computer desktop.
- 🔗 Double-click on the **X23C\_29952.exe** application to run the driver installation.
- ❗ Follow the on-screen instructions as detailed below:  
The installer will also guide you through the steps necessary to install this software.



- 🔗 Double-click the Choose your language and click **OK**
- 🔗 Click the **Install the driver** tab ...



- ❗ A series of messages will be displayed
- ❗ *Installing the ASIO driver.*
- ❗ *Looking for currently running applications.*
- 🔗 Click **Yes** if prompted to allow the Setup app to make changes to your computer.
- 🔗 Click **Yes** if prompted to allow *USB Audio driver package* to make changes to your device.



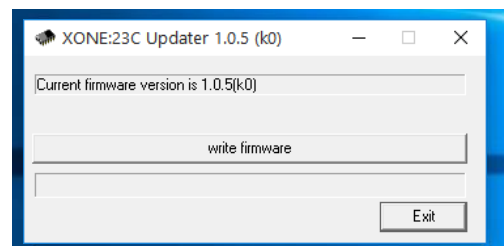
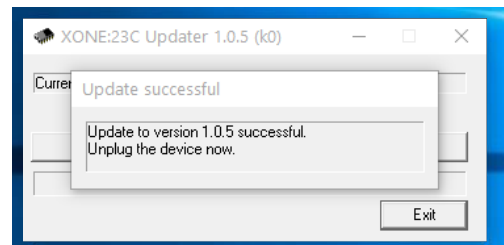
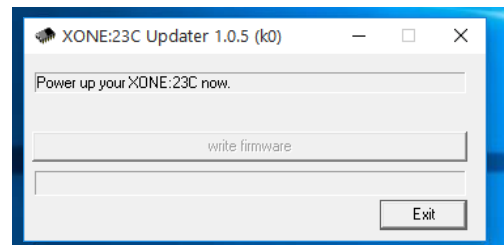
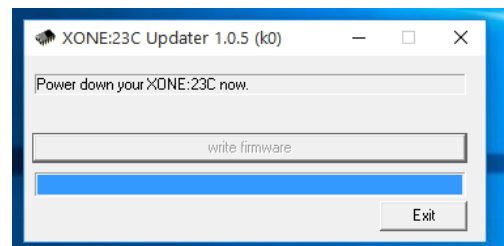
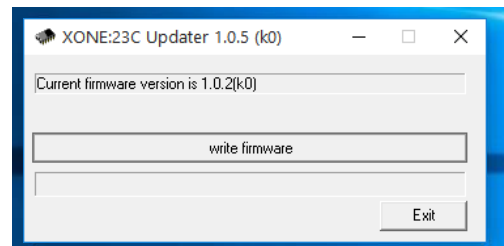
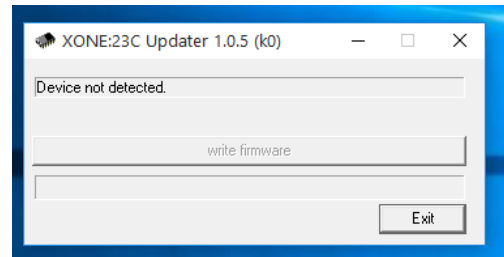
- 🔗 After completing the driver installation, **RESTART** the PC.
- ❗ **IMPORTANT:** Check the mixer's Audio Firmware is up to date *before* opening your DJ Software
- ❗ Follow details as described in Step 2 on the next page.

**PLEASE FOLLOW INSTALL & UPDATE INSTRUCTIONS CAREFULLY**

Xone Product	XONE:23C	
Device Driver (PC)	v2.9.95.2	[X23C_v29952.exe]
Audio Firmware	v1.0.5	[FWUpdater_X23C_v105.exe]

**Step 2: Check/Update Audio Firmware**

- ! Ensure the mixer is **disconnected** from the computer and powered **OFF**
- 🔗 Ensure no other applications are open.
- 🔗 Extract the X23C\_AFW105\_PC.zip contents and run **FWUpdater\_X23C\_v105.exe**
- ① “Device not detected” will be displayed
  - Plug in the USB cable
  - Switch the XONE:23C **ON**
- ① The application will display: “Current firmware version is ...”
- ! **IF Current firmware version is NOT 1.0.5... UPDATE THE MIXER AUDIO FIRMWARE**
- 🔗 Click on ‘write firmware’
- ! **DO NOT switch OFF or interrupt power supply or connection to your XONE:23C while installation is in progress**
- ① When installation is complete, the application will display: “Power down your XONE:23C now”
  - Switch the XONE:23C **OFF**
- ! **DO NOT switch OFF or interrupt power supply connection to your PC during the update process**
- ① The application will display “Power up your XONE:23C now”
  - Switch the XONE:23C **ON**
- ① The application will briefly display “...Update to version 1.0.5 successful. Unplug the device now...”
- ① Then, “Current firmware version is 1.0.5”
  - Switch the XONE:23C **OFF**
- 🔗 Press ‘Exit’ on the Audio Firmware Updater
- 🔗 **RESTART** the PC after exiting the Updater.
  - Switch the XONE:23C **ON**
- ✅ The Firmware Update is now complete





This release updates Microsoft Windows® PC system, ASIO compatible, Device Drivers for XONE:23C Bundle also includes v1.0.5 Audio Firmware update for improved USB Soundcard connection.

Xone Product	XONE:23C		
Device Driver (PC)	v2.9.95.2	[X23C_v29952.exe]	
Audio Firmware	v1.0.5	[FWUpdater_X23C_v105.exe]	
Operating System:	Compatible	Support Active	
Windows® 11	✓	✓	Updated 12/2021
Windows® 10	✓	✓	
Windows® 8	✓	✗	
Windows® 7	✓	✗	



XONE:23C v29952 Device Software changelogs

**v2.9.95.2 Device Drivers**

- ❗ Support updated for PC Microsoft Windows® Operating Systems 12/2021
- ❗ Direct support closed for legacy Microsoft Windows® Operating Systems
- ✓ **FIXED:** UI
- ✓ Improved performance (lower dpc latency)
- ❗ Removed unused configuration value in usb-tab of ASIO control panel
- ❗ Disabled "un-checking Output/Input" in usb-tab of ASIO control panel

2.9.93.0

- ✓ **FIXED:** Potential code 38 causes (driver does not unload)
- ✓ **FIXED:** PLYTC DVR-45 : BSOD caused by power events

2.9.92.6

- ❗ General stability and performance improvements.
- ✓ **FIXED:** 4096 : Buffer size bug in control panel
- ✓ **FIXED:** 232 : If the ASIO System Performance is set to 'Highspeed', on some PC's the driver crashes when sample rate is changed between 44.1 and 48 kHz. Audio system disconnects and MIDI stops.

Known Issues

- ❗ v2.9.95.2 Installation does not remove previous driver installs from registry.
- ❗ To permanently delete previous device drivers installed on your PC;
- 🔗 Go to; *Start\Settings\Devices\Device Manager*
- 🔗 Click > to expand the Universal Serial Bus controllers tree...
- 🔗 Right-click on *Allen & Heath XONE23C 2.9.nn*
- 🔗 Select Uninstall
- 🔗 Tick the Delete the driver software for this device option.
- 🔗 Click Uninstall

**v1.0.5 Audio Firmware**

- ✓ **FIXED:** ECN4461. Resolves issue with Atmel processor Chip crash
- ❗ Update stabilises USB Soundcard connection, eliminating potential sporadic disconnection

If you have any problem with install or update, please contact **A&H Product Support:**  
<http://support.allen-heath.com>