

ALLEN & HEATH®



 **XONE:K2**

V2.5.0 OPERATING FIRMWARE

! CRITICAL UPDATE !

XONE:K2 OPERATING FIRMWARE v2.5.0

This maintenance release implements critical processor updates for your XONE:K2
The bundle includes **v2.5.0 Operating Firmware** installers for macOS and Windows®PC

PLEASE FOLLOW INSTRUCTIONS FOR INSTALLATION CAREFULLY

Xone Product	XONE:K2	
Operating Firmware	V2.5.0	
Operating System:	macOS	[XK Update V250.app]
Operating System:	Windows®PC	[K2 Programmer.exe]

Refer to p.5 for software changes

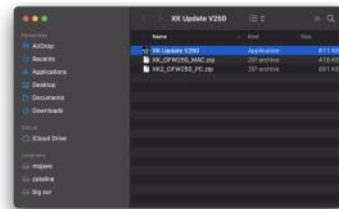
Installing XONE:K2 Operating Firmware

! IMPORTANT !

- ! **IMPORTANT** Xone:K2 cannot fully connect with M1 Macs and some PCs running AMD Ryzen* CPUs, until the controller's Operating Firmware is updated to V2.5.0
- ① Use an **Intel-based** Mac or PC to install the V2.5.0 updater
- ① Device Drivers **do not** need to be installed on computers used to run V2.5.0 updater apps
- ① Go to www.allen-heath.com/ahproducts/xonek2
- 🔗 Click the **SOFTWARE** tab and expand the **OPERATING FIRMWARE** menu.
- 🔗 Download the 'current' Operating Firmware bundle:
- ① **XK2_OFW250.zip**
- 🔗 Extract the .zip folder corresponding with your host computer to the system desktop;
- ① To update from a Mac, use the **XK_OFW250_MAC.zip**.
- ① To update from a Windows®PC, use the **XK2_OFW250_PC.zip**.

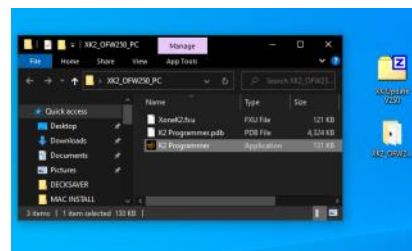
① macOS | XK_OFW250_MAC.zip | XK Update V250.app

- ! Use an **Intel-based** Mac to run the V2.5.0 Installer .app
- 🔗 Connect the XONE:K2 directly to the Mac via USB
- ① Ensure the controller powers **ON**
- ① Device Drivers **do not** need to be installed.
- 🔗 Open the **XK_OFW250_MAC.zip** archive
- 🔗 Double-click on the **XK2 Update V250.app** to run the Installer
- ① Follow the prompts displayed by the app and outlined on page 3 overleaf ...



① Windows® PC | XK2_OFW250_PC.zip | K2 Programmer.exe

- ! Use an **Intel-based** Windows® PC* to run the V2.5.0 Installer .exe
- 🔗 Connect the XONE:K2 directly to the PC via USB
- ① Ensure the controller powers **ON**
- ① Device Drivers **do not** need to be installed. The PC prompts when '**XONE:K2**' is set up and ready to use
- 🔗 Extract the contents of **XK2_OFW250_PC.zip** to a new folder on the desktop
- 🔗 Double-click on **K2 Programmer.exe** to run the Installer
- ① Follow the prompts displayed by the app and outlined on page 4 overleaf ...



XONE:K2 OPERATING FIRMWARE v2.5.0

Xone Product **XONE:K2**
Operating Firmware **V2.5.0**
Operating System: **macOS**

[XK Update V250.app]

Installing XONE:K2 Operating Firmware continued...

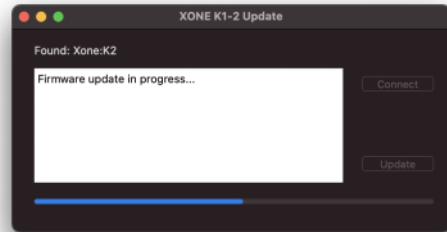
- 🔒 Close all Audio and MIDI applications before running the Updater.
- 🔒 Click **Connect** to continue and follow the instructions onscreen ...



- 🔒 Click the **Update** tab to continue

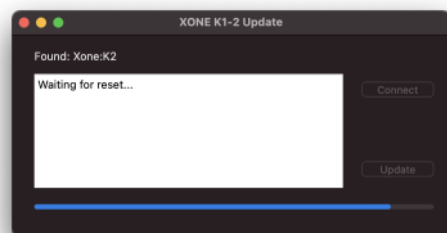


- 📄 Installation takes a moment, various messages are displayed during the process ...

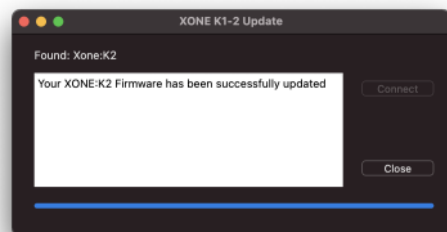


! IMPORTANT: DO NOT disconnect the XONE:K2 hardware during the update

- 📄 After the new firmware is installed, the Updater automatically resets the XONE:K2.



- 🔒 After the controller has reset, click **Close** to exit the Updater.



✅ The Operating Firmware is now up to date.

XONE:K2 is ready to connect and use with Apple Silicone (M1) *and* AMD Ryzen hardware.

XONE:K2 OPERATING FIRMWARE v2.5.0

Xone Product XONE:K2
Operating Firmware V2.5.0
Operating System: Windows®PC [K2 Programmer.exe]

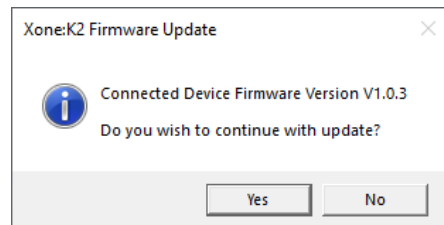
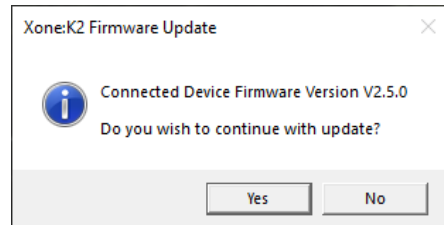
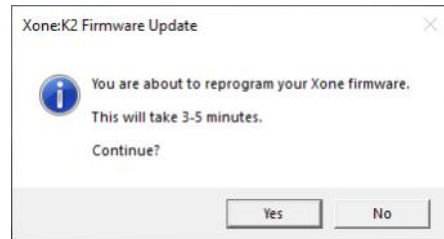
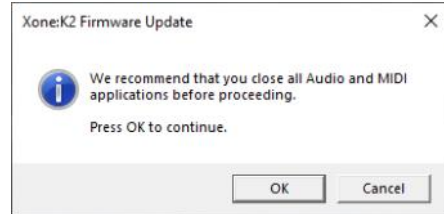
Installing XONE:K2 Operating Firmware continued...

- 🔒 Close all Audio and MIDI applications before running the Updater.
- 🔒 Press **OK** to run the Updater app.

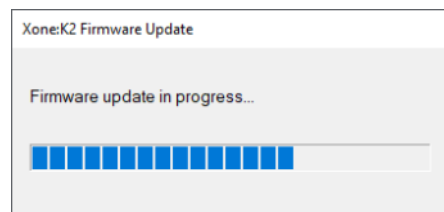
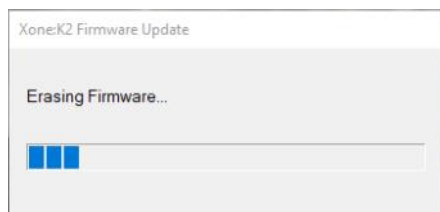
- 🔒 Press **Yes** to continue.
- 📄 The current **Device Firmware Version** is displayed.
- 📄 If the **Connected Device Firmware Version** displayed is **V2.5.0**
- ✅ The XONE:K2 Operating Firmware is up to date
- ! You **do not** need to continue the Update.
- 🔒 Close the application.

- 👉 REBOOT (disconnect / re-connect) the XONE:K2 before further use.

- 📄 If the **Connected Device Firmware Version** displayed is below **V2.5.0**
- 🔒 Click the **Yes** to continue the update.

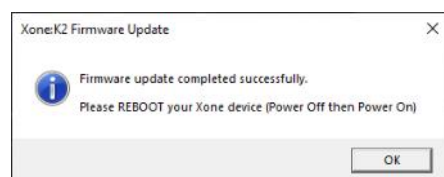


- 📄 Installation takes a moment, various messages are displayed during the process ...



! **IMPORTANT: DO NOT** disconnect the XONE:K2 hardware during the update

- 👉 After the new firmware is installed, REBOOT the XONE:K2 (disconnect/re-connect) to complete the update.
- 🔒 Click **OK** to exit the Updater.
- ✅ The Operating Firmware is now up to date.



XONE:K2 is ready to connect and use with AMD Ryzen *and* Apple Silicone (M1) hardware.

XONE:K2 OPERATING FIRMWARE v2.5.0

This maintenance release implements critical processor updates for your XONE:K2 Bundle includes **v2.5.0 Operating Firmware** installers for macOS and Windows PC

PLEASE FOLLOW INSTRUCTIONS FOR INSTALLATION CAREFULLY

Xone Product	XONE:K2	
Operating Firmware	V2.5.0	
Operating System:	macOS	[XK Update V250.app]
Operating System:	Windows®PC	[K2 Programmer.exe]

		Compatible	Support Active
Ventura	[macOS13*]	✓	✓
Monterey	[macOS12*]	✓	✓
Big Sur	[macOS11*]	✓	✓
Catalina	[macOS10.15]	✓	✗
Mojave	[macOS10.14]	✓	✗
Windows11	[Microsoft PC]	✓	✓
Windows10	[Microsoft PC]	✓	✓
Windows8.1	[Microsoft PC]	✓	✗
Windows 7	[Microsoft PC]	✓	✗

XONE:K2 Operating Firmware Software Changelog

V2.5.0

- ✓ (R)ECN4866: V2.5.0 Operating Firmware implements compatibility for Apple silicone (M1) hardware and improvements for USB connectivity issues reported with some AMD Ryzen* PCs.
- ✓ KTWO-35 - **FIXED** : Enables full-duplex MIDI and audio via USB connection with Apple silicone (M1) devices for macOS.
- ⓘ *Issue: XONE:K2 cannot fully connect with Apple silicone (M1) computers **before** V2.5.0 Firmware is installed.
- ⓘ Symptoms: XONE controller hardware is listed and passes audio, but not MIDI data.
- ! *Use an **Intel-based** Mac or PC to install the update

- ✓ KTWO-29 - **FIXED** : Improves USB connectivity with AMD Ryzen* for Windows®PC
- ⓘ Issue: XONE:K2 does not maintain stable (power) connection with Windows®PCs on some AMD Ryzen (*5000 Series) chipsets **before** V2.5.0 firmware is installed.
- ⓘ Symptoms: PCs may prompt "this device cannot start" **code 10 error**, or the host PC continually re-powers the XONE controller
- ! Use an **Intel-based** Mac or PC, or other non-AMD Ryzen PC*, to install the update

If you experience a problem during installation, please contact A&H Product Support:

<http://support.allen-heath.com>

Mac and macOS are trademarks of Apple Inc., registered in the U.S. and other countries