



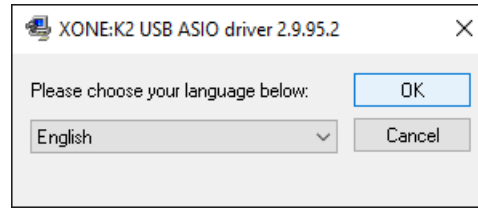
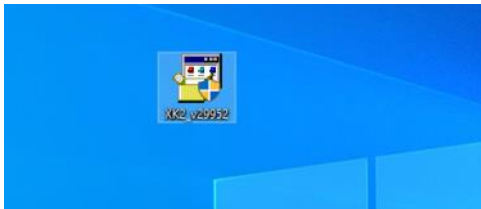
This release updates details* for XONE:K2 Microsoft Windows® PC, ASIO compatible, Device Drivers

Xone Product	XONE:K2			
Device Driver (PC)	v2.9.95.2	[XK2_v29952.exe]		
Operating System:	Compatible	Support Active		
Windows® 11	✓	✓	Updated	12/2021
Windows® 10	✓	✓		
Windows® 8	✓	✗		

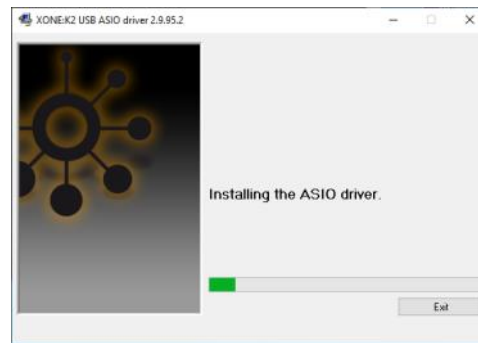
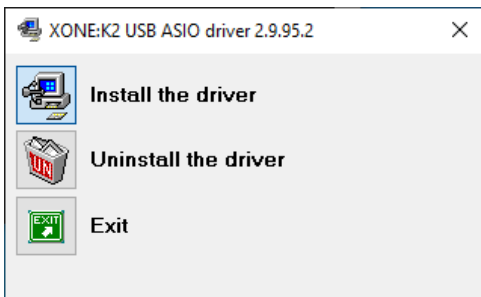


PLEASE FOLLOW INSTALL INSTRUCTIONS CAREFULLY

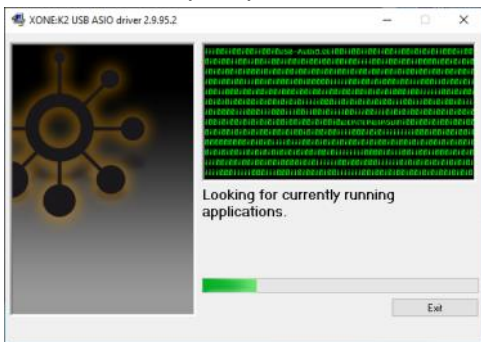
- ① **NOTE:** Please ensure you are logged on with Administrator access enabled
- ! Ensure your XONE:K2 is **disconnected** from the host PC
- 🔗 When the driver package has downloaded, extract contents of the **XK2_29952.zip** bundle to your computer desktop
- 🔗 Double-click on the **XK2_v299520.exe** application to run the installation.
- ① Follow the on-screen instructions as detailed below:
The installer will also guide you through the steps necessary to install this software.



- 🔗 Double-click the Choose your language and click **OK**
- 🔗 Click the **Install the driver** tab ...



- ① A series of messages will be displayed
- ① *Installing the ASIO driver.*
- ① *Looking for currently running applications.*
- 🔗 Click **Yes** if prompted to allow the Setup app to make changes to your computer.
- 🔗 Click **Yes** if prompted to allow *USB Audio driver package* to make changes to your device.



Click **Reboot now** once the process has completed, to complete the Device Driver installation and **RESTART** the PC.

- ✓ Installation is now complete.



This release updates details* for XONE:K2 Microsoft Windows® PC, ASIO compatible, Device Drivers

Xone Product	XONE:K2		
Device Driver (PC)	v2.9.95.2	[XK2_v29952.exe]	
Operating System:	Compatible	Support Active	
Windows® 11	✓	✓	Updated 12/2021
Windows® 10	✓	✓	
Windows® 8	✓	✗	
Windows® 7	✓	✗	



XONE:K2 v29952 Device Software changelogs

v2.9.95.2 Device Drivers

- ❗ Support updated for PC Microsoft Windows® Operating Systems 12/2021
 - ❗ Direct support closed for Windows®8 and legacy Microsoft Windows® Operating Systems
 - ✓ **FIXED:** UI
 - ✓ Improved performance (lower dpc latency)
 - ❗ Removed unused configuration value in usb-tab of ASIO control panel
 - ❗ Disabled "un-checking Output/Input" in usb-tab of ASIO control panel
- 2.9.93.0
- ✓ **FIXED:** Potential code 38 causes (driver does not unload)
 - ✓ **FIXED:** PLYTCDVR-45 : BSOD caused by power events
- 2.9.92.6
- ❗ General stability and performance improvements.
 - ✓ **FIXED:** 4096 : Buffer size bug in control panel
 - ✓ **FIXED:** 232 : If the ASIO System Performance is set to 'Highspeed', on some PC's the driver crashes when sample rate is changed between 44.1 and 48 kHz. Audio system disconnects and MIDI stops.

XONE:K2 v29952 Known Issues

- ❗ 370 Line input displayed in Windows Sound control panel for K2 using Ploytec drivers.
- ! v2.9.95.2 Installation does not remove previous driver installs from registry.
- ❗ To permanently delete previous device drivers installed on your PC;
- 🔗 Go to; *Start\Settings\Devices\Device Manager*
- 🔗 Click > to expand the Universal Serial Bus controllers tree...
- 🔗 Right-click on *Allen & Heath XONEK2 2.9.nn*
- 🔗 Select Uninstall.
- 🔗 Tick the **Delete the driver software for this device** option.
- 🔗 Click Uninstall

If you have any problem with install or update, please contact **A&H Product Support:**

<http://support.allen-heath.com>