

# ALLEN & HEATH

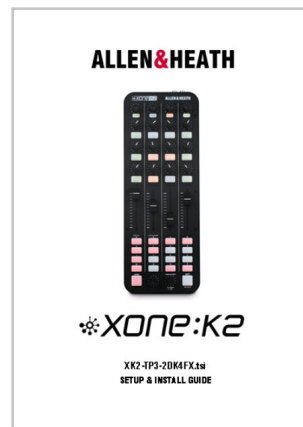


 ***XONE:K2***

**XK2-TP3-2DK4FX.tsi**  
**SETUP & INSTALL GUIDE**

## BUNDLED FILES

XK2-TP3-2DK4FX  
SETUP & INSTALL GUIDE .pdf

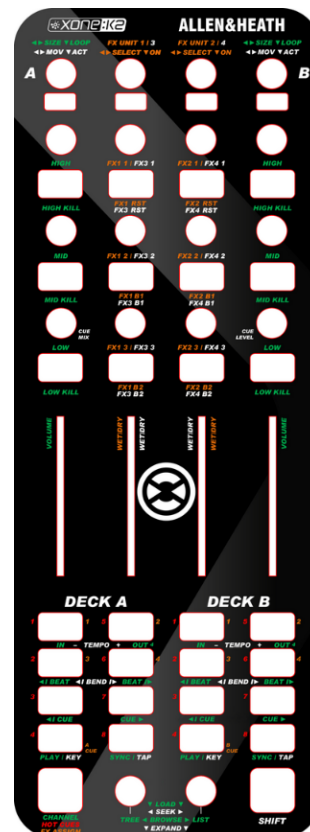


XK2-TP3-2DK4FX .tsi



PRINTABLE GRAPHIC OVERLAY .pdf

EDITABLE GRAPHIC OVERLAY .ai

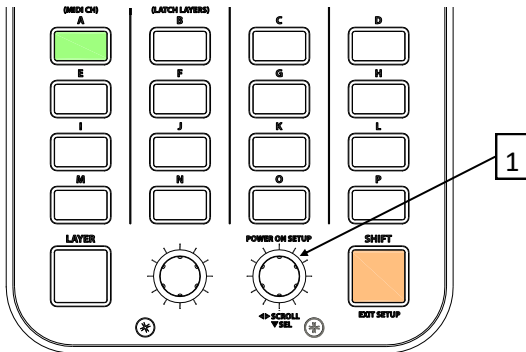


# MIDI CHANNEL SETUP FOR XK2-TP3-2DK4FX.tsi

## Set the MIDI Channel to CH14

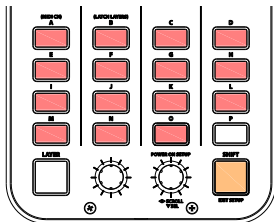
To change the MIDI Channel on your XONE:K2, you must first enter Setup Mode.

- Hold down the **POWER ON SETUP** encoder [1]
- Power the XONE:K2 on power up by connecting the USB cable into the XONE:K2 (or RJ45 lead when powering by X:LINK ), then plugging the cable into your Mac, PC, or mixer.

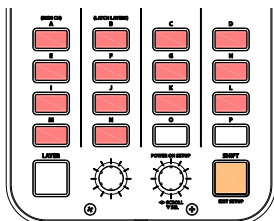


The Switch Matrix LEDs will flash RED three times to indicate the controller is in Setup Mode. Switch A [MIDI Channel Setup] will be illuminated GREEN, as above.

- Press the **POWER ON SETUP** encoder [1] to display the current MIDI channel. The current MIDI Channel is represented by the number of switch matrix LEDs illuminated. By default the MIDI Channel number is set to 15, as shown below, to prevent control interaction with Xone mixers which default to channel 16.



- To change the MIDI Channel, rotate the **POWER ON SETUP** encoder until the correct number of LEDs are illuminated RED. Set the MIDI channel to **CH14**, as below.



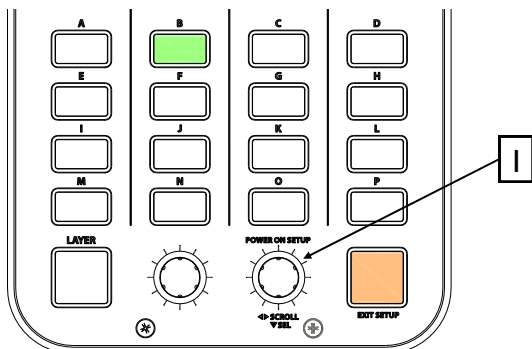
- Press the **POWER ON SETUP** encoder to store the change and to return to Setup Mode.

# LATCHING LAYERS SETUP FOR XK2-TP3-2DK4FX.tsi

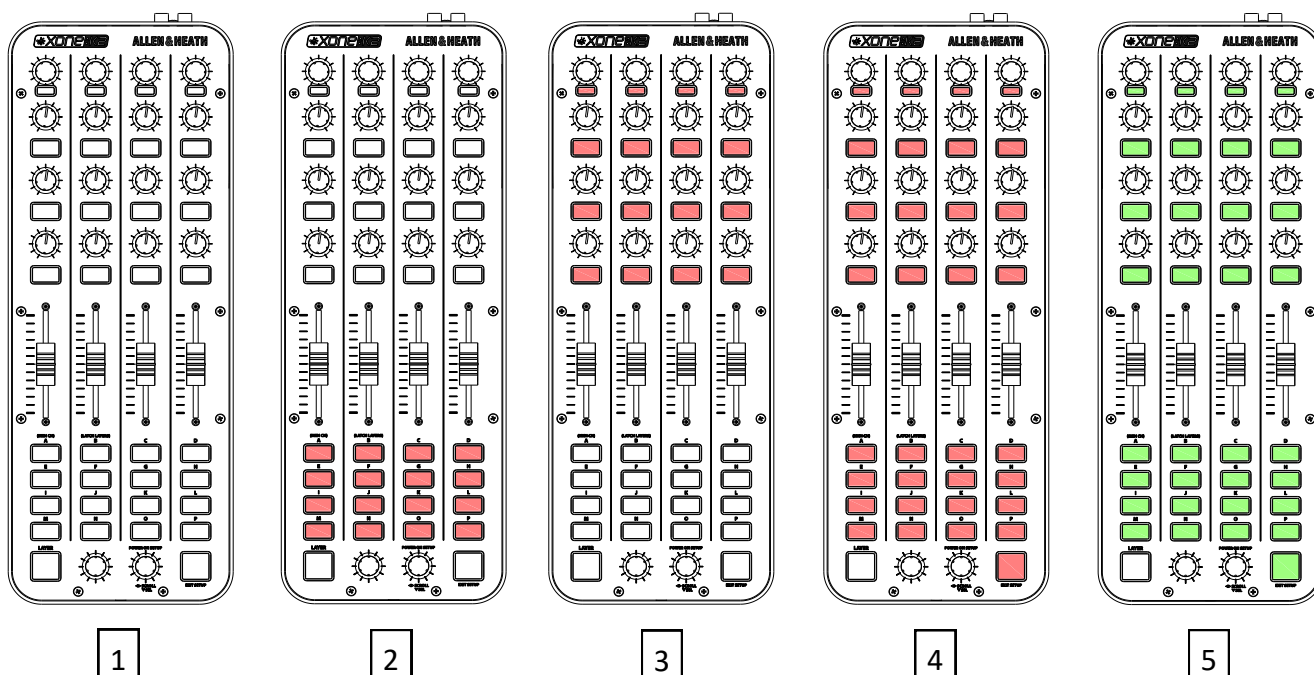
## Set the Latching Layers mode

Latching Layers provide embedded layer control via the 'LAYER' button on the XONE:K2. When a Latching Layers mode is enabled, the LAYER switch is used to toggle between the RED, AMBER then GREEN layers.

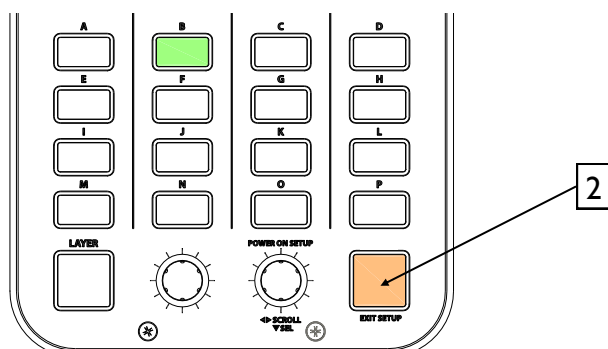
- In Setup Mode, rotate the POWER ON SETUP encoder to illuminate switch **B** [Latch Layers setup]



- Press the POWER ON SETUP encoder to display the current Latching Layer mode



- Rotate the POWER ON SETUP encoder until only the Switch Matrix LEDs are illuminated RED, as shown in 2 above. In this state the 16 switches are linked to Latching Layers
- Press the POWER ON SETUP encoder to return to Setup Mode.
- Press the EXIT SETUP switch [2] to exit Setup Mode. The Switch Matrix LEDs will flash three times to indicate the setup is complete.

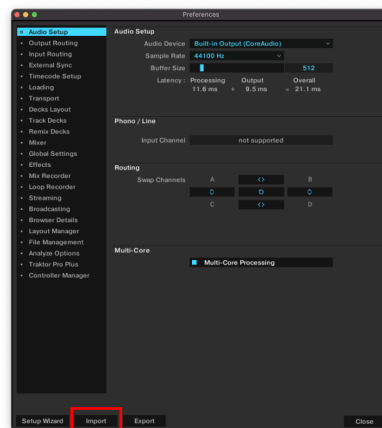


# XK2-TP3-2DK4FX.tsi INSTALL GUIDE

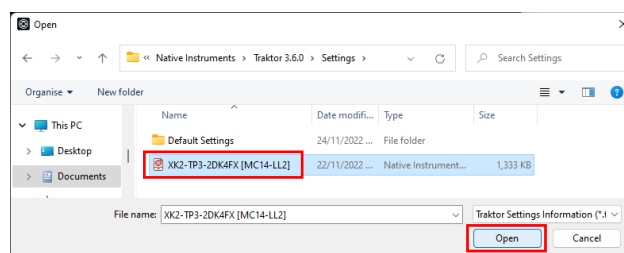
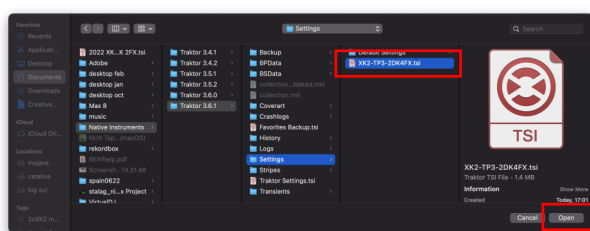
## Traktor .tsi map file location

- Extract the XK2-TP3-2DK4FX.tsi file from the .zip bundle to the following directory:  
**macOS:** *Documents > Native Instruments > Traktor 3.6.x > Settings*  
**PC:** *Documents > Native Instruments > Traktor 3.6.x > Settings*

- Open the Preferences dialogue in Traktor and click the **Import** tab.



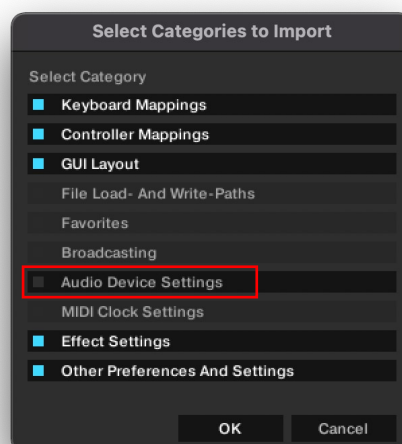
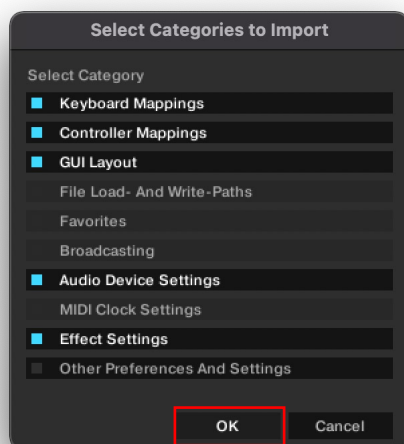
You will see the XK2-TP3-2DK4FX.tsi file in the default directory.



- Select it and click on **Open**.

## Internal Soundcard settings

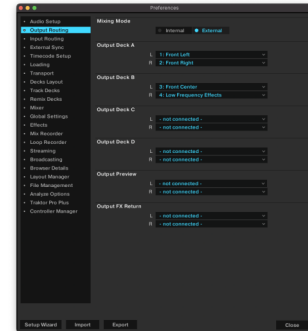
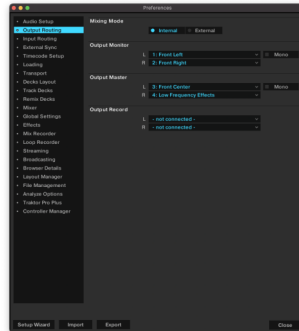
**macOS:** When using the XONE:K2 internal soundcard, check each of the options in the **Select Categories to Import** prompt shown below and click **OK**



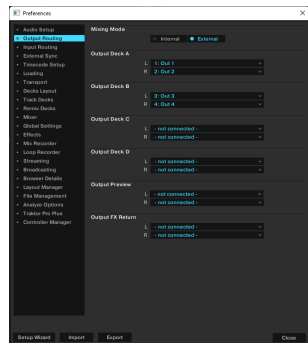
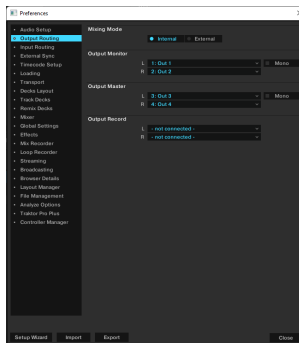
- NOTE:** If you are connecting your K2 to a Xone Series mixer via X:LINK, for MIDI control only, un-check the **Audio Device Settings** option.

# XK2-TP3-2DK4FX.tsi INSTALL GUIDE

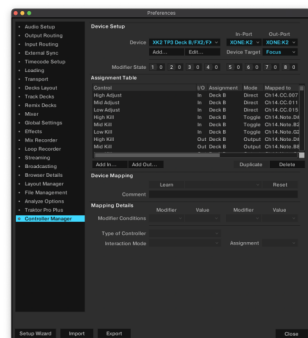
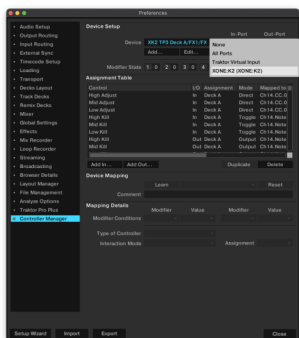
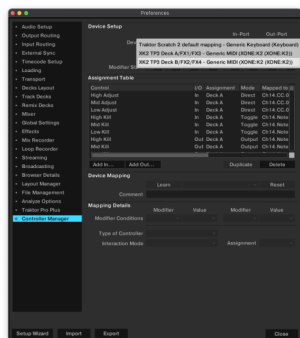
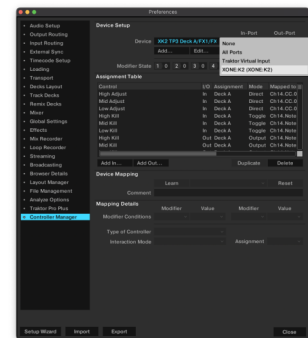
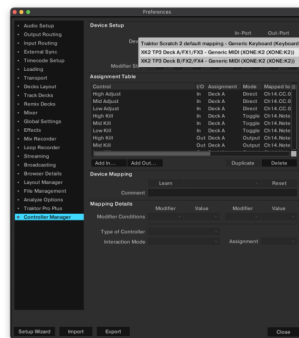
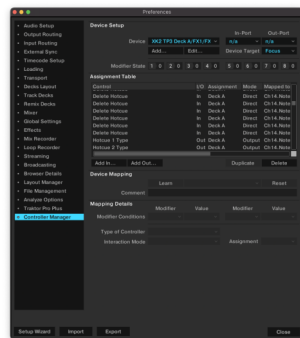
- **macOS:** Ensure XONE:K2 is enabled as the Audio Device:  
**XONE:K2 (CoreAudio)**  
Internal soundcard channels are pre-set for Internal and External Mixing Modes.



- **PC:** When using the XONE:K2 internal soundcard, enable XONE:K2 as the Audio Device:  
**XONE:K2 USB ASIO driver (ASIO)**  
Configure the Internal soundcard channels for Internal or External Mixing Mode.



- In the Controller Manager, Device Setup panel, ensure that both Deck A **and** Deck B maps have the **In-Port** and **Out-Port** assigned to the XONE:K2.



- **NOTE:** If you are connecting to a Xone Series mixer via X:LINK for MIDI control only, assign the **In-Port** and **Out-Port** for both Deck A **and** Deck B devices to the corresponding XONE mixer.