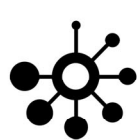


ALLEN&HEATH[®]



Xone:PX5[®]

PC SOFTWARE RELEASE NOTES

XPX5_SRN_4670_2

DRIVER INSTALLATION (PC)

This release updates, ASIO compatible, Microsoft Windows® PC system Device Drivers for XONE:PX5

Xone Product **Xone:PX5**
Device Driver (PC) **XPX5_v4670.zip** [XPX5_v4670.exe]

Supported OS: Microsoft Windows® 11
 Microsoft Windows® 10

Refer to page 6 for details of software changelogs.



Installing XONE Device Software

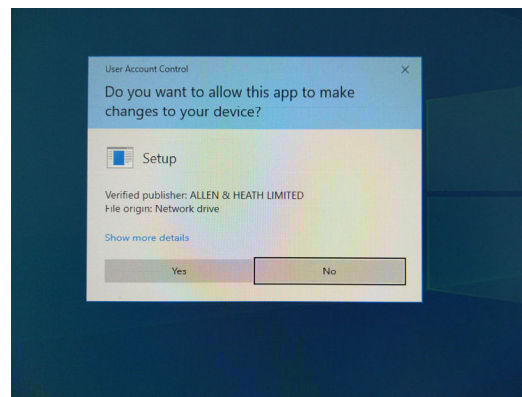
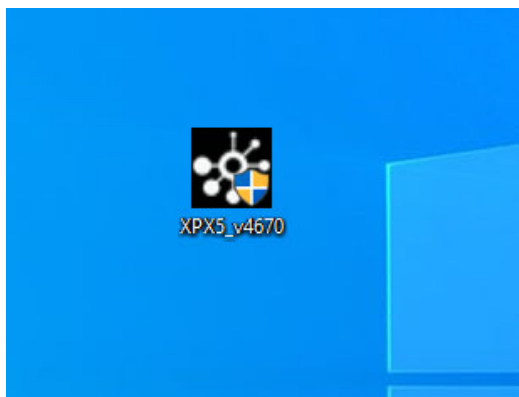
In order to access all internal dual-soundcard channels of the Xone:PX5 for use with Windows® PC, you will need to install the dedicated, ASIO® compatible, Device Drivers.

Check you have downloaded the current Device Software bundle, available for download from the Allen & Heath website: www.allen-heath.com/xonepx5

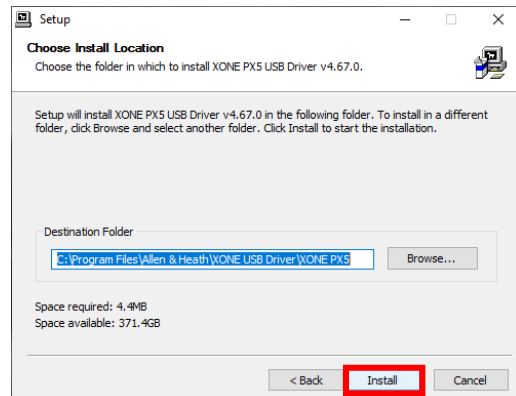
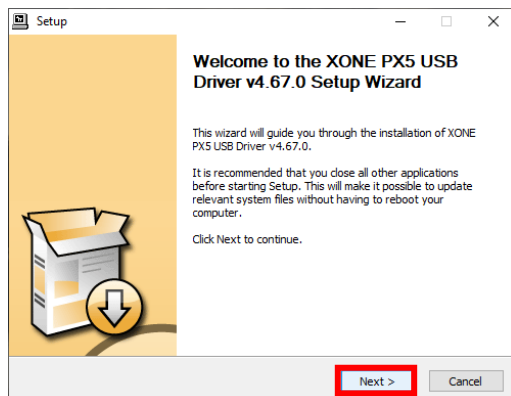
PLEASE FOLLOW INSTALL INSTRUCTIONS CAREFULLY

NOTE: Please ensure you are logged on to the PC with Administrator access enabled

- When the driver package has downloaded, extract the installer to your computer desktop. Follow the on-screen instructions as detailed below and overleaf. The installer will also guide you through the steps necessary to install this software.
- Double-click on the XONE:PX5 Driver Setup application, XPX5_v4670 to begin.



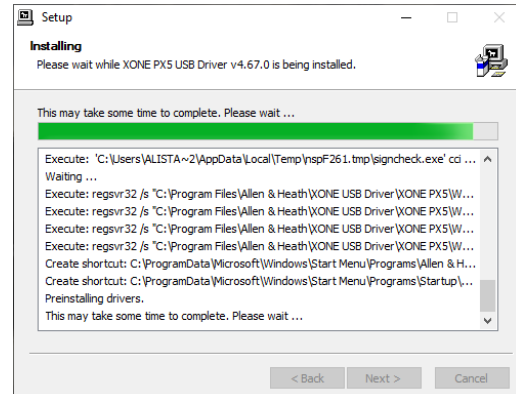
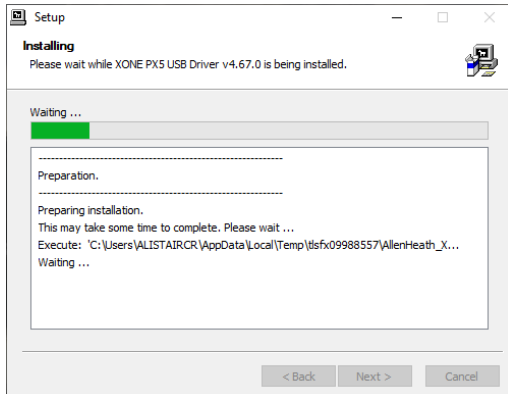
- Click **Yes** on the User Account Control prompt to confirm and continue installation.
- Click **Next** to run the installer application.



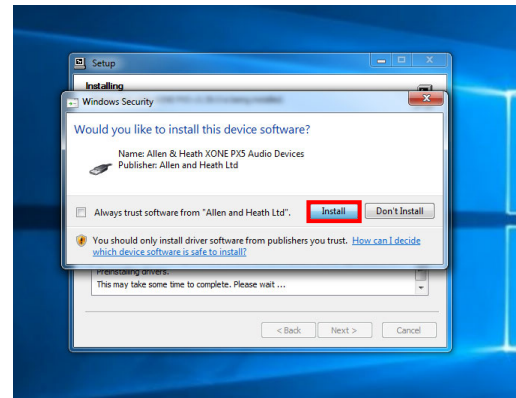
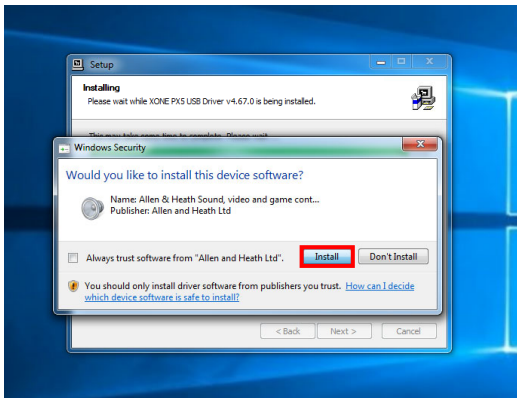
- Click on the **Install** tab to pre-install the Device Drivers to the default system folder. A series of messages will be displayed...

DRIVER INSTALLATION (PC) continued

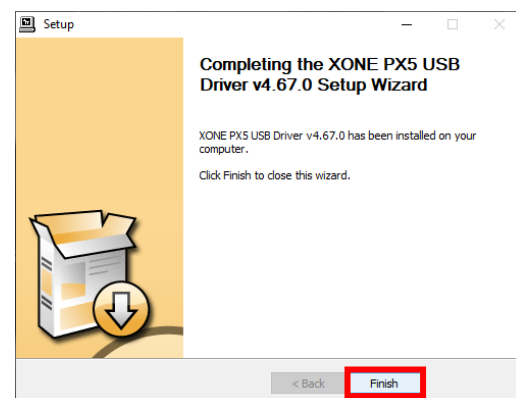
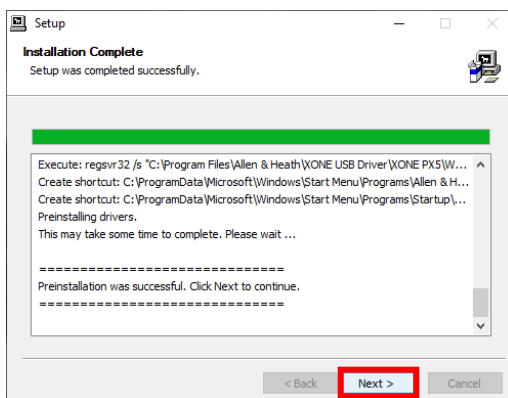
- *This may take some time to complete.*
- *Please wait while XONE:PX5 v4.67.0 software is installed...*



- Click **Install** if prompted to install *Allen&Heath Sound, video and game controllers* software.
- Click **Install** if prompted to install *Allen&Heath XONE:PX Audio Devices* software.



- Connect the XONE:PX5 mixer to your PC via the USB port and power the unit **ON**.*.



- Click **Next** to continue once the pre-installation process has completed.
- Click **Finish** to complete the Device Driver installation.

* NOTE:

It is possible to run the XONE:PX5 Device Driver pre-installation process without connecting the XONE:PX5 mixer to your computer.

In this case you will be prompted to “...*disconnect and reconnect the device to complete driver installation.*”

If the mixer cannot be connected, click **Yes** on the prompt to close the application.

To complete installation, connect the XONE:PX5 to your PC via USB, power the mixer **ON**.

Wait a few moments for the PC to enumerate the mixer before opening your software application.

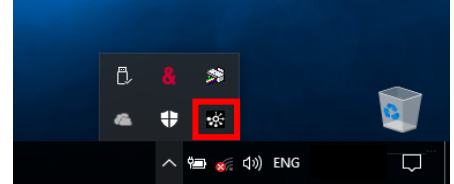
DRIVER INSTALLATION (PC): DEVICE CHECK

Confirming Driver Installation and Hardware Device connection

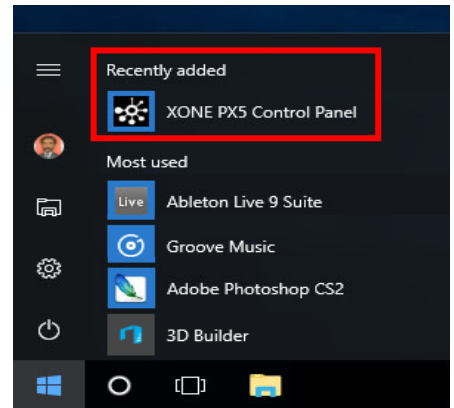
Microsoft Windows®

When first connecting the XONE:PX5 to a PC computer after the Device Drivers are installed, check the mixer is recognised correctly by the system before opening your Digital DJ, or DAW, software application.

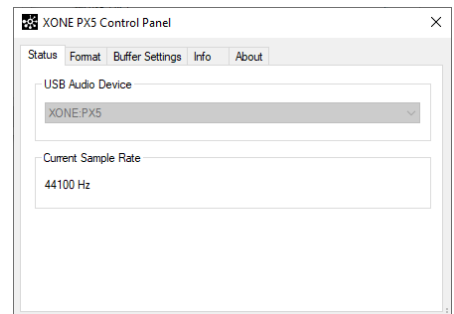
- Connect the XONE:PX5 to your PC via USB
- Click the **Show hidden icons** tab on the Taskbar
- Check XONE:PX5 Control Panel icon is displayed



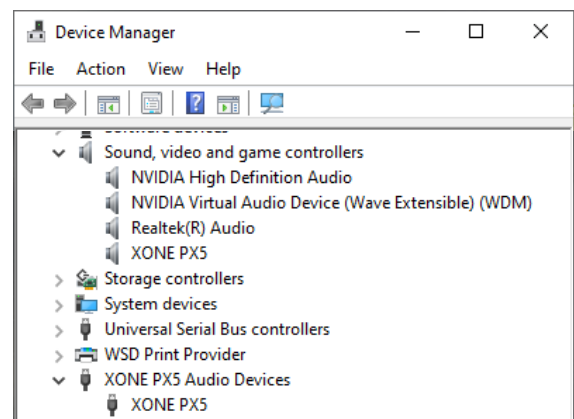
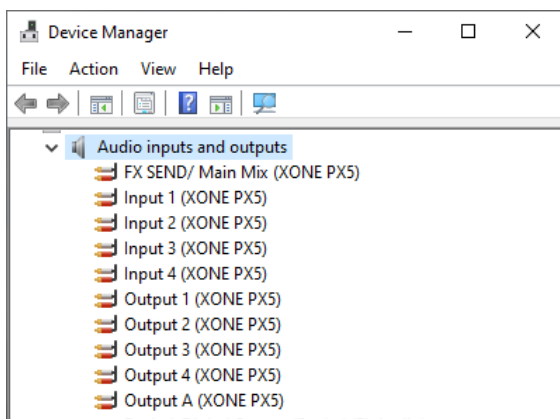
- Next, click on the Windows Start icon.
- The XONE:PX5 Control Panel icon should be displayed under **Recently added** apps



- Open the XONE PX5 Control Panel
- Status view displays: XONE:PX5 and Current Sample Rate
- Format view Input and Output sections display: 10 channels and the currently selected bit depth.
- Sample Rate is selectable from 44.1 to 96kHz
- Bit depth is selectable between 16bits and 24bits
- Device Settings can be adjusted as required to suit applications, or system CPU capacity.
- Adjustment is implemented via DAW host audio prefs (ASIO), or system Sound dialogue (WDM)
- See p.5 for supported buffer sizes. See p.6 for updated WDM Audio options.



- Next, open the Hardware Device Manager dialogue. Navigate to: **START / Settings / Devices / Device Manager**
- With the Device Drivers for the internal soundcards correctly installed, XONE:PX5 is listed as a hardware device under three device trees.
- Expand (click on >) the **Audio inputs and outputs** tree to display five inputs and five outputs:
Input 1 - 4 (XONE PX5) + FX SEND/Main Mix (XONE PX5) and **Output 1 - 4 (XONE PX5) + Output A (XONE PX5)**
- Expand the **Sound, video and game controllers** and **XONE:PX5 Audio Devices** trees to display: **XONE PX5**



INTERNAL SOUND CARD SPECIFICATIONS

Hi-Speed USB Soundcard - Default

The Xone:PX5 includes a 20 Channel (5 Stereo IN / 5 Stereo OUT), 24Bit/96kHz, Hi-Speed USB internal soundcard.

Mac USB Class Compliant CoreAudio CoreMIDI interface;
No Driver installation is required for operation with macOS.

USB Soundcard Specification

Channels: 20 Channel (5 Stereo IN / 5 Stereo OUT),
Supported Variable Buffer Sizes: 32 / 64 / 128 / 256 / 512 / 1024 / 2048 / 4096 / 8192 samples
Supported Sample Rates: 44.1 kHz / 48kHz / 88.2kHz / 96kHz
Bit depth: 24Bit
USB MIDI Ports: 1 x MIDI IN / 1 x MIDI OUT

XONE:PX5 soundcard channels are arranged in stereo pairs and will be displayed in your Digital DJ, or DAW software as follows:

DEFAULT USB AUDIO ROUTING		
Mixer Channel outputs <i>to</i> Computer		
Soundcard Input	Xone:PX5	DAW Software IP Option
USB 1	CH1 L (RIAA or LINE) SND L 1	Analogue 1
USB 2	CH1 R (RIAA or LINE) SND R 1	Analogue 2
USB 3	CH2 L (RIAA or LINE) SND L 2	Analogue 3
USB 4	CH2 R (RIAA or LINE) SND R 2	Analogue 4
USB 5	CH3 L (RIAA or LINE) SND L 3	Analogue 5
USB 6	CH3 R (RIAA or LINE) SND R 3	Analogue 6
USB 7	CH4 L (RIAA or LINE) SND L 4	Analogue 7
USB 8	CH4 R (RIAA or LINE) SND R 4	Analogue 8
USB 9	MASTER L or FXSEND L A	Analogue 9
USB 10	MASTER R or FXSEND R A	Analogue 10
Mixer Channel inputs <i>from</i> Computer		
Soundcard Output	Xone:PX5	DAW Software OP Option
USB 1	CH 1 L (USB) RTN L 1	Analogue 1
USB 2	CH 1 R (USB) RTN R 1	Analogue 2
USB 3	CH 2 L (USB) RTN L 2	Analogue 3
USB 4	CH 2 R (USB) RTN R 2	Analogue 4
USB 5	CH 3 L (USB) RTN L 3	Analogue 5
USB 6	CH 3 R (USB) RTN R 3	Analogue 6
USB 7	CH 4 L (USB) RTN L 4	Analogue 7
USB 8	CH 4 R (USB) RTN R 4	Analogue 8
USB 9	CH 5 L (USB) RTN L A	Analogue 9
USB 10	CH 5 R (USB) RTN R A	Analogue 10

XONE:PX5 is also fully **Traktor Scratch Certified** so the internal soundcard delivers support for DVS control of Native Instruments' flagship [TRAKTOR PRO 3](https://www.native-instruments.com/en/products/dj/traktor/traktor-pro-3/) DJ software straight out of the box.



For details on configuring XONE:PX5 for use with timecode and Traktor, please refer to p.37 of the XONE:PX5 User Guide (AP10733): www.allen-heath.com/xonepx5/

DEVICE SOFTWARE CHANGELOGS

Xone Product
Device Driver (PC) Xone:PX5
XPX5_v4670.zip [XPX5_v4670.exe]

Operating System:	Compatible	Support Active
Windows® 11	✓	✓ Updated 12/2021
Windows® 10	✓	✓
Windows® 8.1	✓	✗
Windows® 7	✓	✗

Software changelogs:

Xone:PX5 Device Drivers. v4.6.70

- ✓ Windows®11 support is confirmed.
- ❗ Updates full ASIO support for Microsoft Windows® PC.
- ❗ Implements new options for WDM Audio operation with all five (stereo) channels now displayed and selectable for WDM supported applications.
- ❗ Playback and Recording default is CH1/2; **Output 1 (XONE PX5) / Input 1 (XONE PX5)**
- ❗ To re-route USB audio via different soundcard channels for playback;
- 🔧 Go to: *Start > Settings > System > Sound. Output.* Choose your output device
- 🔧 Select the required channel for USB playback to the mixer:
eg: For USB playback with applications supporting WDM audio only via PX5 CHA;
- 🔧 Select: **Output A (XONE PX5)**
- 🔧 Set the top panel **CH A** source select switch to **USB**. Turn the **CH** switch ON
- ❗ To re-route USB audio via different soundcard channels for recording, VST-FX, etc;
- 🔧 Go to: *Start > Settings > System > Sound. Input.* Choose your input device
- 🔧 Select the required channel for USB output from the mixer:
eg: For USB recording with applications supporting WDM audio only;
- 🔧 Select: **FX SEND / Main Mix (XONE PX5)**
- 🔧 Set the rear panel USB 9/10 switch OUT to **MST**
- ! Direct support closed for legacy Microsoft Windows® Operating Systems
- 🔧 For more information, please visit: <https://support.microsoft.com/>
- ❗ Minor bug fixes and improvements

Known Issues:

- ❗ FIFTYTHREC-84: Clicks in Ableton Live 9 at high sample rates
Audible interruptions in the audio stream, manifest as 'clicks', when running Ableton Live 9 at high sample rates (88.2 and 96KHz), with XONE:PX5 **ASIO Buffer Size** set to *Auto* and **USB Streaming Mode** set to *Reliable*.
- ❗ This is a local DAW software application issue; resolved as follows:
In the XONE:PX5 Control Panel > Buffer Settings, adjust the **ASIO Buffer Size** to a fixed sample rate, compatible with the capacity of your computer's CPU.
Where necessary, adjust or reset the **USB Streaming Mode** option.

If you experience any other problem when installing Xone:PX5 Device Software, please contact Allen&Heath Product Support <http://support.allen-heath.com>