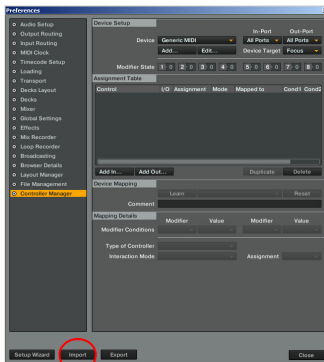


RECOMMENDED .TSI INSTALLATION GUIDE

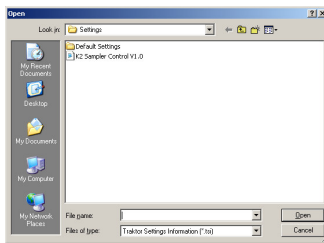
Copy or move the **K2 Sample Control** TSI file to the following location:

PC: My Documents → Native Instruments → Traktor X.X.X → Settings

Mac: Documents → Native Instruments → Traktor X.X.X → Settings



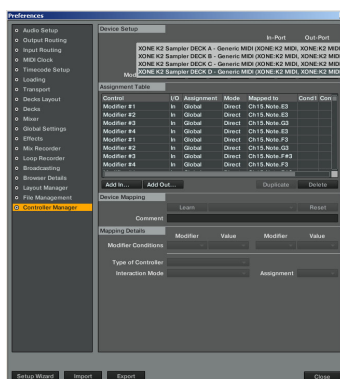
Open the Preferences window in Traktor and click the 'IMPORT' button.



You will see the K2 Sampler Control TSI file in the default directory. Select it and click on 'Open'.



Select 'OK'.



In the 'Device' box, make sure that all Deck maps have their 'In-Port' and 'Out-Port' mapped to the Xone:K2.