



This document will help guide you through installing the latest audio firmware, MIDI firmware and audio/MIDI driver for your XONE 2D/4D/DX

Product	2D	4D	DX
Driver (PC)	2.9.30	2.9.30	2.9.30
Driver (Mac)	2.0.9	2.0.9	2.1.1
Audio firmware	1.1.0	1.1.0	1.0.5
MIDI firmware	1.11	2.01	1.13

Please refer to the above table for the information relevant to your XONE device

Updating XONE software:

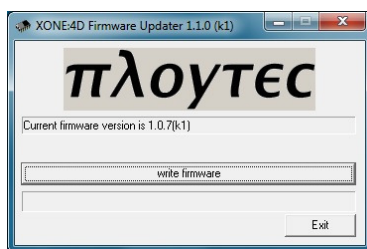
Step 1: Updating audio firmware

- Check audio firmware version:

Note: The audio firmware version can only be checked if a driver is currently installed on your computer.

If this is a fresh install please go to **step 2**

- Connect your XONE device to the computer
- Extract and run audio firmware updater
- Check the firmware version displayed on updater screen

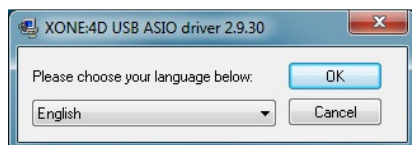


- If the "Current firmware version..." displayed for your XONE device is not the latest audio firmware update the unit by clicking the "write firmware" button, then follow the on-screen instructions.

Once complete move to next step.

Step 2: Install 2.9.30/2.0.9 driver update

- Please make sure you install the correct driver for your operating system (32 Bit or 64 Bit)
- Extract the folder from the zip and run the 'Setup.exe'



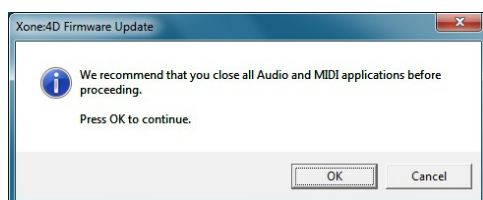
- Follow the on screen instructions. Once complete move to next step.

Note: If this is the first installation of a Xone driver on your system you will now need to carry out step 1: **Updating Audio Firmware**, before moving to **Step 3**.

Step 3: Updating MIDI Firmware

- Check MIDI Firmware:

- Power up the unit.
- The MIDI Firmware version is temporarily displayed in the BPM window of your XONE device during power-up. (XONE 2D/4D only) (DX firmware is displayed in itch software)
- If the latest MIDI firmware version is not displayed, update the device's MIDI firmware.
- Extract and run MIDI firmware updater



- Follow the on screen instructions

Congratulations! You are now running the most up to date XONE Software.

If you experience any problems following the updates, please contact Allen & Heath Technical Support:

<http://allen-heath.helpserve.com>