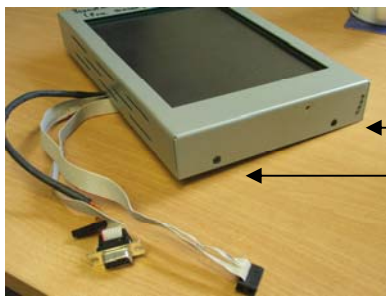


Aim: To remove the touch screen for service or replacement.

Tools: Torx T10

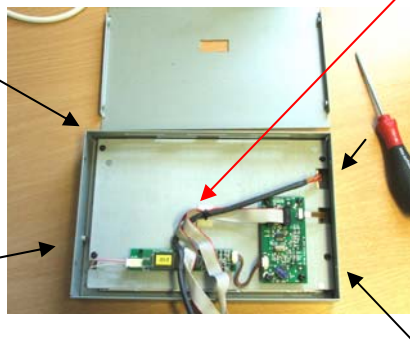


1. Refer to section 2.01. Remove top extrusion.
2. refer to section 2.02. Open upper processor panel.
3. Refer to section 2.13. Loosen adjuster screw B (only one needs to be loosened).
4. Refer to section 2.13. Remove adjuster screws A1 & A2.
5. Remove cables and touch screen chassis.



Remove T10 x4

6. Remove 10 x4.



If replacing cables, you MUST fit a new CABLE TIE!

7. The touch screen is now free of the chassis.
8. On reassembly, apply Loctite to adjuster screws A / B.
9. Do not over tighten adjuster screws A / B.