

## Setting a cross fade

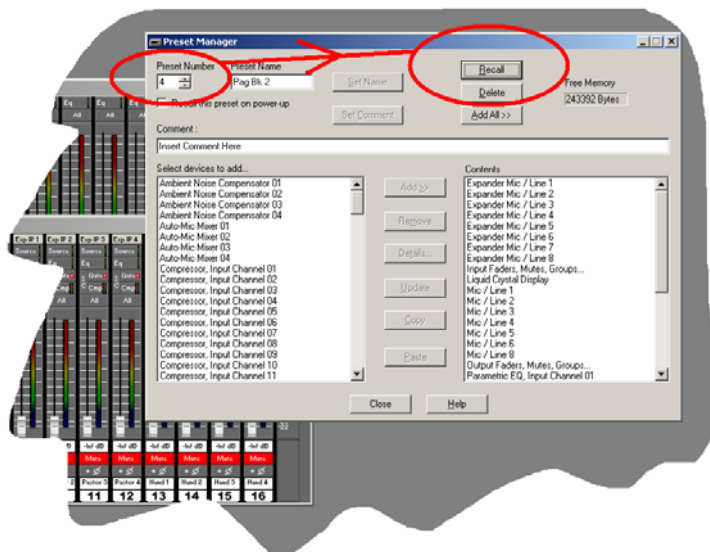
The cross fade needs to be set in individual presets. The cross fade time is the time that it takes for the previous audio settings to change to the audio settings in the preset to be recalled. For instance, if a cross fade time of 3 seconds is selected in preset 4, whenever preset 4 is recalled, the previous audio settings – level, EQ etc will change to the settings stored in preset 4 over a period of 3 seconds.

A useful application of the cross fade is where multiple sources are selected in zones. If no cross fade time is set, each time a new source is selected in a zone, the new audio will burst through instantly. This is less than desirable when using a PL remote switch to scroll through sources. In this case, a cross fade time set in each of the presets used for routing will result in a smooth fade in of audio.

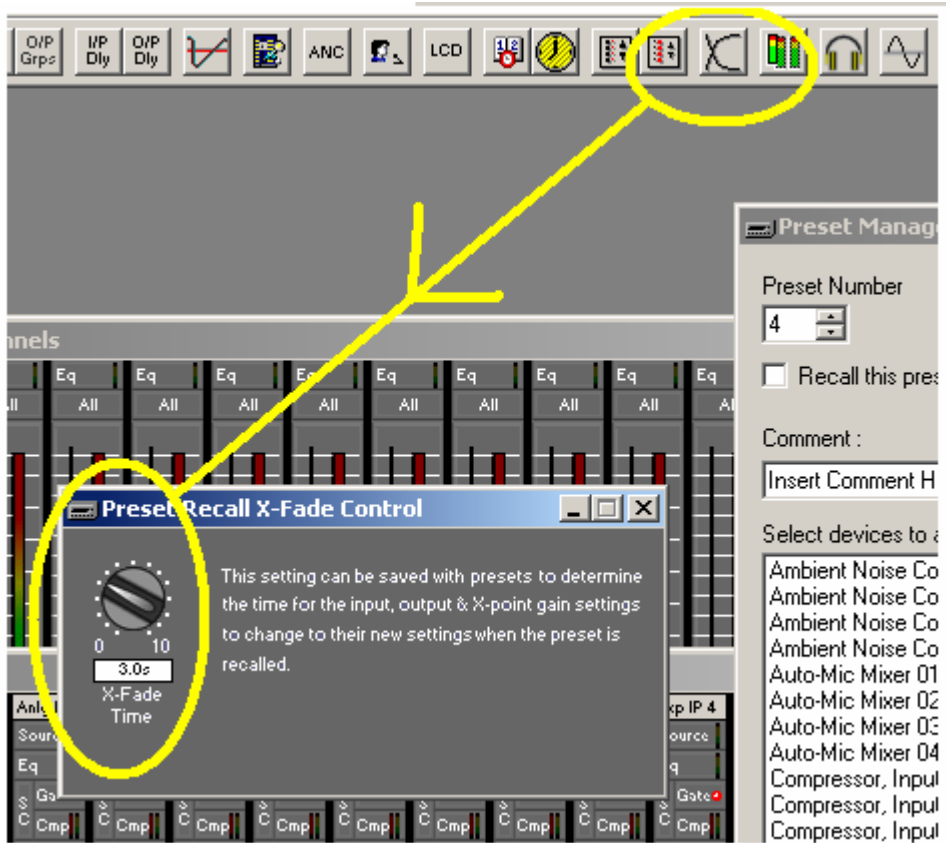
Please note, that cross fade settings are NOT shown on the PC screen when viewing System Manager. Faders, EQ settings etc will move instantaneously on screen, which can give the false impression that the cross fade is not working.

## Set the cross fade

1. Recall the preset to be faded into. In this example we wish to cross fade into preset 4.



2. Select the cross fade time.



3. Update the Input Faders Mutes and Groups AND/OR the Output fader Mutes and Groups in the preset and check the cross fade box as required. For instance, if you want input levels to cross fade then update the inputs – if you want the output levels to cross fade then update the outputs.

