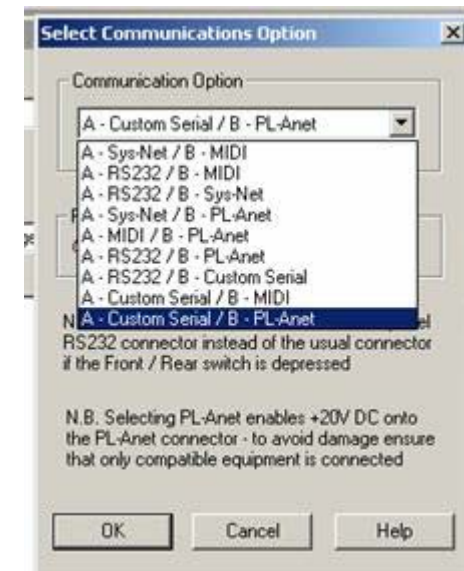


Custom serial string

The iDR can send a user defined serial command when a preset is recalled. An example would be to trigger a video switcher when the iDR routes audio (audio switching).

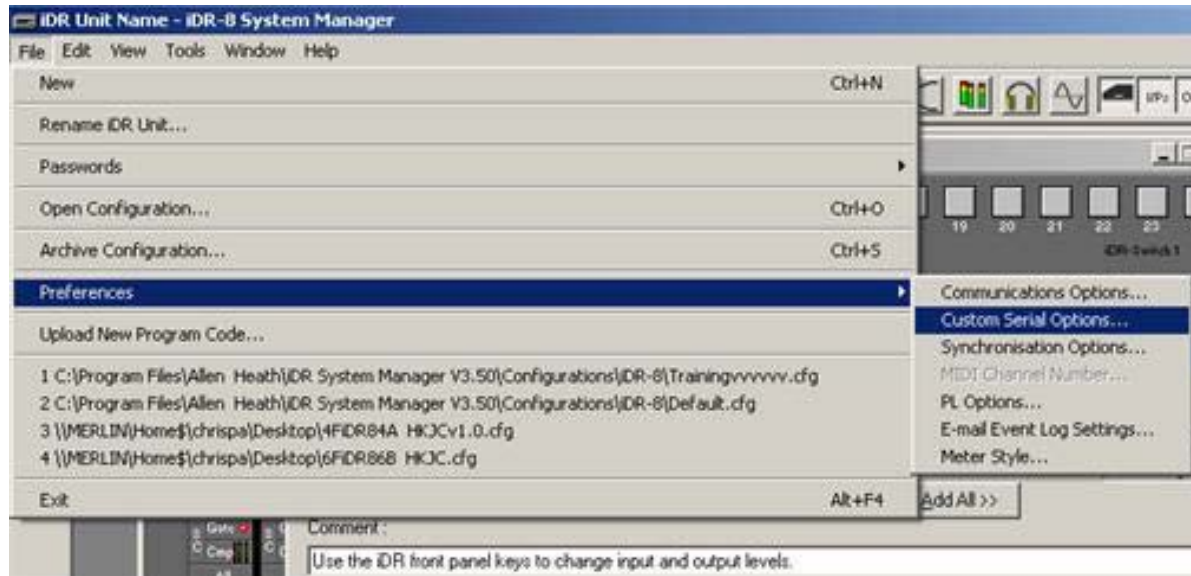
1. Enable the Custom Serial function

- 1.1. In the File menu, select Preferences, Communications Options.
- 1.2. This example shows Custom Serial String selected along with PL-Anet (for remote control).



2. Serial port settings

- 2.1. Go back to the file menu, Preferences, Custom Serial Options. Refer to the operating instructions for the equipment (video switcher) and set the required Baud Rate, Parity and Stop Bits.



3. Enter the serial commands in presets

- 3.1. In the Preset Manager window select Custom Serial String and Add it to the preset.
- 3.2. Refer to the operating instructions for the equipment and type in the required serial command.
- 3.3. Repeat this for each iDR preset that recalls routing of audio sources.

