

Allen & Heath **DAW Control** allows compatible A&H mixers to control a DAW using popular **HUI** or **Mackie Control** protocols.

How it works

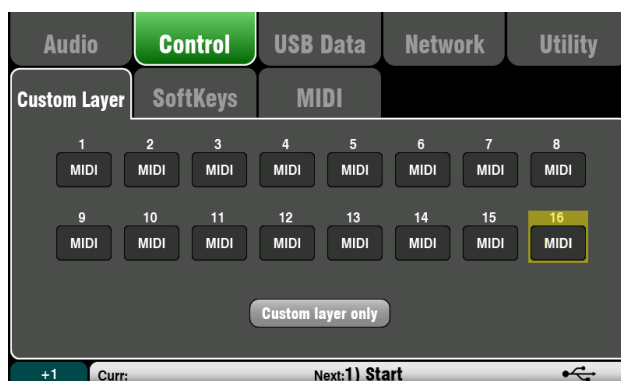
Compatible A&H mixers send and respond to MIDI messages as detailed in the **MIDI Protocol** specification documents available for download from www.allen-heath.com.

DAW Control translates these messages and creates virtual MIDI I/O ports in OS X for setting up HUI or Mackie Control in your DAW. It can be used as an alternative to, or on top of, the set of standard MIDI messages.

Configure your mixer for DAW Control

- **Qu-16 and Qu-24** (firmware **V1.2 or higher**) - the Custom Layer can be populated with MIDI strips and a dedicated MIDI channel is provided for DAW Control.

1. Go to **Setup / Control / Custom Layer** and set the required fader strips to **MIDI** by selecting first then scrolling with the screen rotary.
2. Set the MIDI Channel in the mixer's **Setup / Control / MIDI** screen. Qu-16 and Qu-24 default to 2 for DAW control.
3. Connect to your Mac over USB.

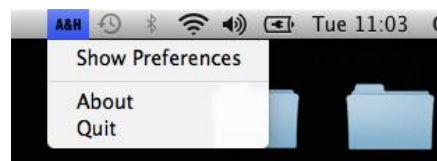


- **GLD-80 and GLD-112** (firmware **V1.4 or higher**) - up to 32 MIDI strips can be assigned to the surface and their set of MIDI messages customized to suit user requirements.
 1. Drag and drop MIDI strips to the desired Banks and Layers in the **Setup / Control / Strip Assign** screen.
 2. Select a MIDI strip to customize its set of MIDI messages. Leave the default values for use with **DAW Control**. You can restore the factory default MIDI messages by recalling Scene 498 in the Template Shows.
 3. Connect to your Mac over network (TCP/IP). Make sure your Mac and the mixer are set to compatible IP addresses within the same subnet.

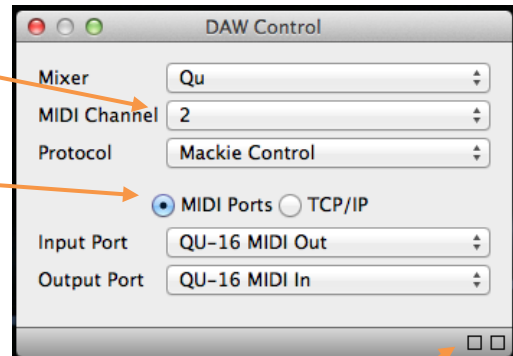
Refer to the mixer User Guide for further information.

Configure DAW Control

1. Download **DAW Control** from www.allen-heath.com and install it on your Mac.
2. Launch **DAW Control** and click on **Show Preferences** in the A&H tray menu to access the configuration panel.



3. Select the MIDI channel as set in the mixer. This is normally set to **2** to match the default MIDI channel used by the Qu or GLD MIDI strips.
4. Select **MIDI Ports** for USB connection to the mixer (Qu), or **TCP/IP** for Cat5 network connection (GLD).



MIDI Ports - Select the MIDI Input and Output ports to be used, for example **Qu-16 MIDI Out** and **Qu-16 MIDI In**.

TCP/IP - Select the mixer from the drop-down box, or select Custom and type in the IP address of the mixer, then tick the **Connect** checkbox.

The two squares in the status bar display MIDI I/O activity. To check you are connected to the mixer, move any fader on the mixer and the left square should flash.

5. Follow the instructions specific to your DAW in the next pages. This will assign the faders, PAFL, Sel/Mix and Mute keys from the MIDI strips to track level, Solo, select and Mute in your DAW. A similar procedure should apply to other DAWs as long as they support HUI or Mackie Control.

Avid Pro Tools

1. Select the **HUI** protocol in the **DAW Control** panel and launch Pro Tools.
2. Go to **Setup / MIDI / Input Devices** and enable all **DAW Control MIDI** ports.
3. Open the **Setup / Peripherals** window and navigate to the **MIDI Controllers** tab.
4. Create a HUI device for each block of 8 MIDI strips present on the mixer, and assign to the corresponding MIDI ports. The following example assumes 16 MIDI strips are used:
 - a. In row #1, select **HUI** as the Type and **DAW Control MIDI 1** as the Receive From and Send To ports.
 - b. In row #2, select **HUI** as the Type and **DAW Control MIDI 2** as the Receive From and Send To ports.
5. Click OK.

Steinberg Cubase

1. Select the **Mackie Control** protocol in the **DAW Control** panel and launch Cubase.
2. Open the **Devices / Device Setup** window.
3. Create a Mackie Control device for each block of 8 MIDI strips present on the mixer, and assign to the corresponding MIDI ports. Note that the top-most device in the left hand list represents the right-most channels. The following example assumes 16 MIDI strips are used:
 - a. Click on the Add Device button (+) and select **Mackie Control**.
 - b. Select **DAW Control MIDI 2** as the Input and Output MIDI Port.
 - c. Click on the Add Device button (+) again and select **Mackie Control**.
 - d. Select **DAW Control MIDI 1** as the Input and Output MIDI Port.
4. Click OK.

Cockos Reaper

1. Select the **Mackie Control** protocol in the **DAW Control** panel and launch Reaper.
2. Open the **Options / Preferences** window and click on **MIDI Devices** from the left hand list.
3. To avoid message conflicts, make sure that all **DAW Control MIDI** Input and Output ports are disabled. If needed, right click on a port to change its status.
4. Select **Control Surfaces** from the left hand list and create a Mackie Control device for each block of 8 MIDI strips present on the mixer, then assign each to the corresponding MIDI ports. The following example assumes 16 MIDI strips are used:
 - a. Click the Add button, select **Mackie Control Universal** surface mode and **DAW Control MIDI 1** as the Input and Output port, then click OK.
 - b. Click the Add button again, then select **Mackie Control Universal** surface mode, **DAW Control MIDI 2** as the Input and Output port, enter **8** as the Surface offset, and click OK.
5. Click OK to close the window.

Ableton Live

1. Select the **Mackie Control** protocol in the **DAW Control** panel and launch Live.
2. Open the **Live / Preferences** window and navigate to the **MIDI/Sync** tab.
3. Select **MackieControl** in the Control Surface #1 dropdown box, and set **DAW Control MIDI 1** as the Input and Output port.
4. For each consequent block of 8 MIDI strips present on the mixer, create a Mackie Control Extender device and assign it to the corresponding MIDI port. The following example assumes 16 MIDI strips are used:
 - a. Select **MackieControlIXT** in the Control Surface #2 dropdown box, and set **DAW Control MIDI 2** as the Input and Output port.
5. Close the window.

Apple Logic

1. Select the **Mackie Control** protocol in the **DAW Control** panel and launch Logic.
2. Open the **Logic Pro / Preferences / Control Surfaces / Setup** window.
3. For each block of 8 MIDI strips present on the mixer, create a Mackie Control device and assign it to the corresponding MIDI port. The following example assumes 16 MIDI strips are used:
 - a. Click New / Install, scroll down, select **Mackie Designs – Mackie Control – Logic Control** and click Add.
 - b. Close the window and click the picture labelled **Mackie Control**.
 - c. Select **DAW Control MIDI 1** as the Output and Input Port.
 - d. Click New / Install again and add another **Mackie Designs – Mackie Control – Logic Control**. Click OK when prompted.
 - e. Close the window and click the picture labelled **Mackie Control #2**.
 - f. Select **DAW Control MIDI 2** as the Output and Input Port.
4. Close the Setup window and go to **Window / Environment**.
5. In the top left, click the drop-down menu next to **Mixer** and select **Clicks and Ports**.
6. Add a new Monitor object by clicking New / Monitor.
7. Identify all the **DAW Control MIDI** ports and your mixer's MIDI port in the left hand list. Click on the corresponding triangles and drag lines to the Monitor box.
8. Save your project to store the settings.