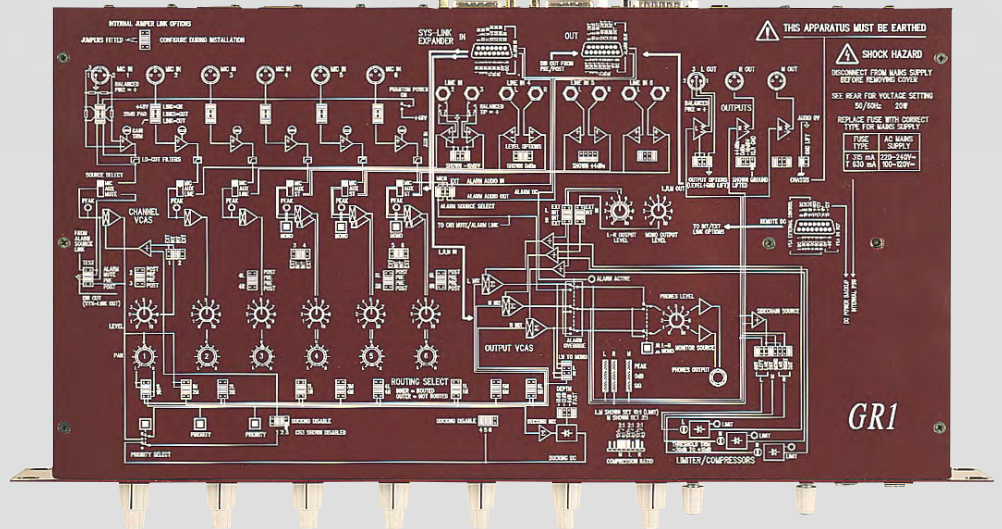


3 output analogue zone mixer



A massive 24 inputs and 3 zone outputs in a little 1U rackmount mixer! No wonder many installers have depended on the **GR1** as their standard zone mixer for several years. It's almost infinitely expandable (using the Sys-link buss interconnect system) and there are plenty of jumpers and trimmers under the lid for fine-tuning each installation.

FEATURES:

- 6 Inputs** → **6** balanced **XLR** with internal **gain trimmer**. Internal jumpers provide 20dB attenuator **pad**, **+48V** power and **HPF @ 70Hz**. **Pk signal** led
- Mono & Stereo Line Inputs** → External aux inputs and 2 mono / 3 stereo balanced line inputs are selected by 3-position front panel switch. Internal jumpers set line level -10dBV/OdBu/ +4dBu
- Channel Direct Outs** → Line level unbalanced configurable pre or post CH level. Appears on Sys-Link connector
- Controls** → Each of the 6 channels and the main **L, R, & M** outputs are fed through high performance VCA circuits. These are controlled individually by the front panel controls or by remote DC voltages. The channels also have pan controls
- 3 Outputs** → **XLR**. Internal **jumpers** for **levels** from -10dBV to +4dBu, plus ground lift. **3 segment led** meter. Configurable as stereo + mono or 3 zones. Outputs are duplicated on the **expander / remote** connector
- Remote Control** → VCA path remote control can be configured by the installer. **Remote 25-pin D-type** female connector includes remote DC input for each of the 6 inputs and 3 outputs
- Compressor Limiters** → On L, R, & M outputs options for compression **ratio**, stereo **link**, **sidechain** source, **threshold** trim
- Priority Ducking** → Flexible system allows one or a combination of channels 1-3 to override the others. Front panel priority buttons select status. Internal jumpers adjust depth and release time & bypass
- Syslink Expander** → Additional input channels and outputs can be provided by linking together **GR1**'s using the 15-pin D-type connectors. Up to 128 inputs and outputs are possible
- Alarm Override** → Comprehensive feature on mic6 or syslink alarm inputs; opto-coupled remote control circuit switches 3 main outputs to the assigned alarm audio source. Test facility & front panel alarm indicator
- Monitoring** → Front panel headphone output and level control with selector for **L-R / Mono**. Alarm and limiter active leds provided
- PSU** → Internal mains voltage PSU. **DC backup** input is provided

Technical Specifications

OdBu = 0.775 Volts rms, +4dBu = 1.23V rms, 0dBV = 1 Volt rms, -10dBV = 316mV rms

Maximum output level

Balanced	+28dBu into 600 ohms
Unbalanced	+21dBu into 2k ohms

Internal headroom

+23dBu

Frequency response

20Hz to 30kHz	+/-1dB
---------------	--------

Distortion THD+noise measured at +14dBu 1kHz

	< 0.04%
--	---------

Crosstalk measured at 1kHz

Channel shutoff	< -90dB
Channel pan	< -75dB
Interchannel	< -80dB

Peak LED

Turns on	5dB before clipping
----------	---------------------

Noise 22Hz - 22kHz referred to 150 ohm source

Mic EIN	-128dB
Line preamp at 0dB gain	-90dBu
Mix noise (all routed)	< -80dBu

Meters Individual bargraphs for L,R,M outputs

Peak:	on 5dB before clipping
OdB Signal:	dynamic indication from -20dB

Ducking

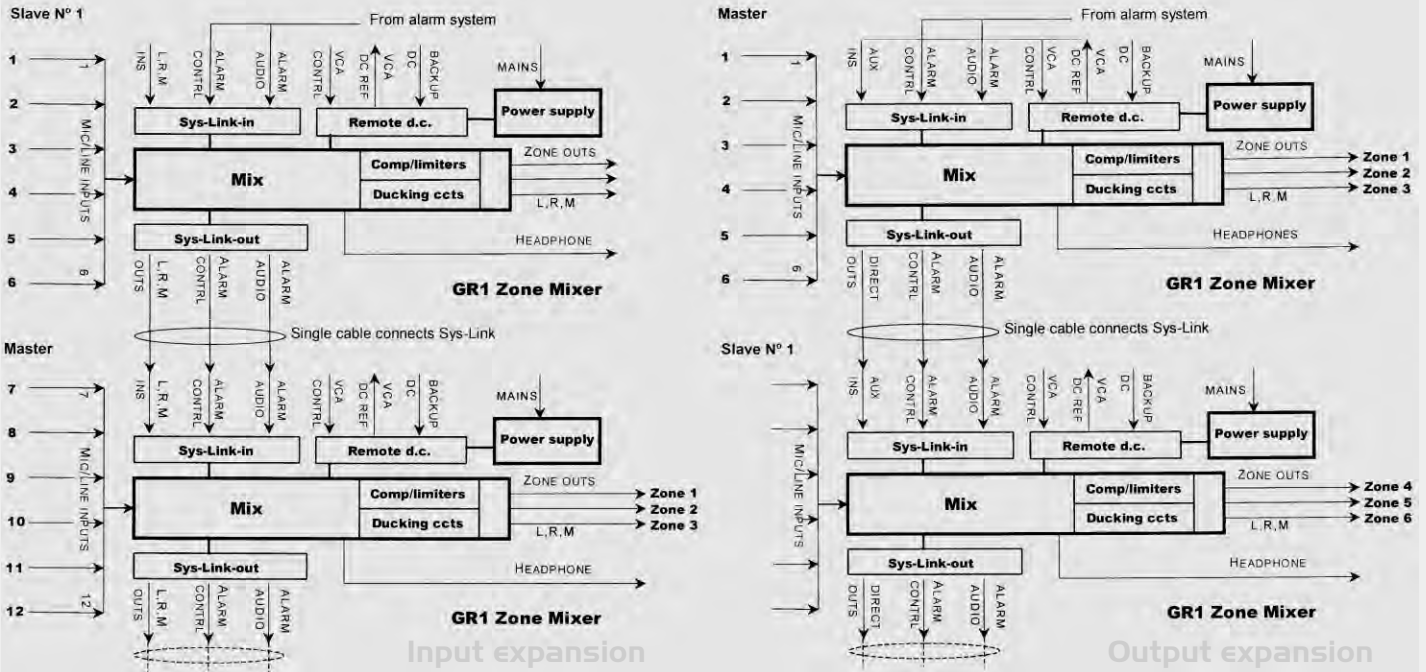
Release fast or slow links
 Depth -6, -12 or 18dB links
 Control from channel 1, 2 & 3 priority switches
 Individual channel ducking to disable links
 Compression/Limiters L,R,M, individually controlled
 Ratio: 2:1 soft compression link
 4:1 hard compression link

Power Supply - internally regulated +/- 16V

Mains Power	+48V DC phantom power
AC mains input	Internal unit
	100 to 240V AC @ 50/60Hz
	Internally wired to country voltage
Main Fuse Rating	100-120V AC use T630mA 20mm
	220-240V AC use T315mA 20mm
DC Power Backup	Ex. DC power supply or batteries
	+/-12V to 16 V DC @ 300mA
	+12V to +48V DC for phantom power

Mechanical specifications - Dimensions in mm

Desktop	Width 483 (19")	Height 44 (1.7")	Depth 262 (10.3")
Weight	4.5kg (9.9lb)		



Connections

INPUTS

Mic, ch 1-6 x6	XLR	pin2+, 3-, balanced	2k ohm	-55 to +12 dBu
		pad selected	10k ohm	-35 to +8 dBu
Mono Line In x2	TRS jack	tip+, ring-, balanced	10k ohms	-10dBV, 0dBu, +4dBu
Stereo Line in x3	TRS jack	tip+, ring-, balanced	10k ohms	-10dBV, 0dBu, +4dBu
Aux in (Sys-Link)	6 pins	15way D female, unbalanced	10k ohm	-2dBu
L,R,M in (Sys-Link)	3 pins	15way D female, unbalanced	10k ohm	-2dBu
Alarm & d.c In (Sys-Link)	3 pins	15way D female, unbalanced	10k ohm	-2dBu
Remote VCA DC In	9 pins	15way D female		0V=off, 10V DC = max
Backup DCin	4 pins	15way D female		max +16V, -16V, +48V DC; min +12V, -12V, +12V DC

OUTPUTS

L,R,M Out x3	XLR	pin2+, 3-, balanced	50 ohm	-10dBV, 0dBu, +4dBu
L,R,M Out (Sys-Link)	3 pins	15way D female, unbalanced	50 ohm	-2dBu
Direct Out (Sys-Link)	6 pins	15way D female, unbalanced	50 ohm	-2dBu
Alarm & DC Out (Sys-Link)	3 pins	15way D female, unbalanced	50 ohm	-2dBu
Phones Out x1	TRS Jack	tip L, ring R		8 to 400 ohm stereo headphones recommended
Remote VCA DC ref	2 pins	15way D female		10V, 0V DC reference voltage for remote VCA control
AC Power connector x1	Standard IEC 3 pin L,N,E.			IEC to moulded plug supplied (country-dependent), internally wired for required worldwide voltage