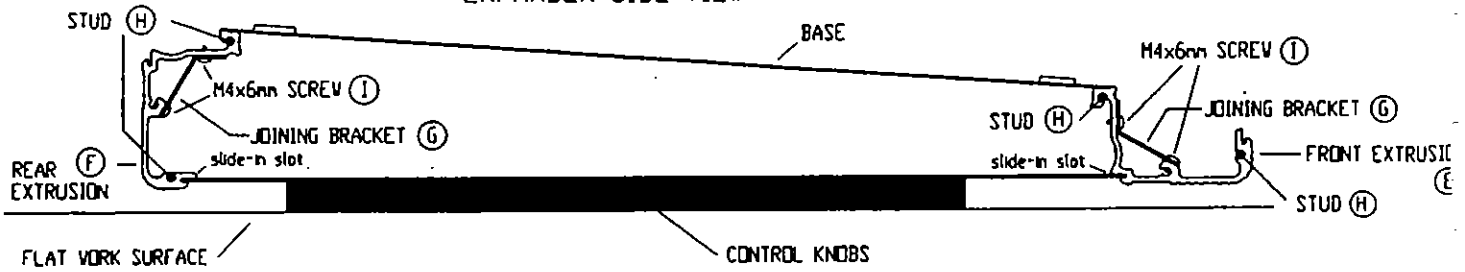
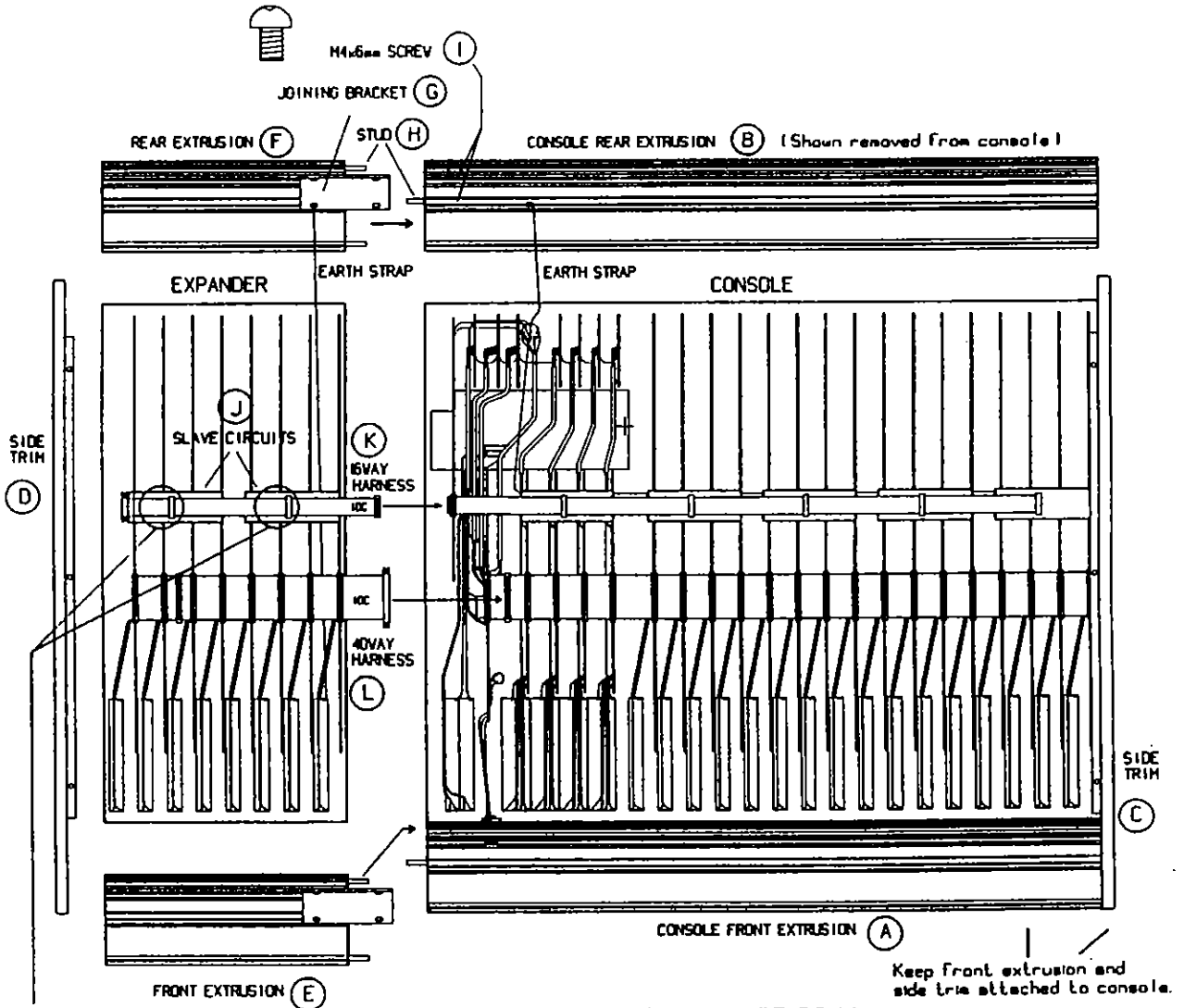
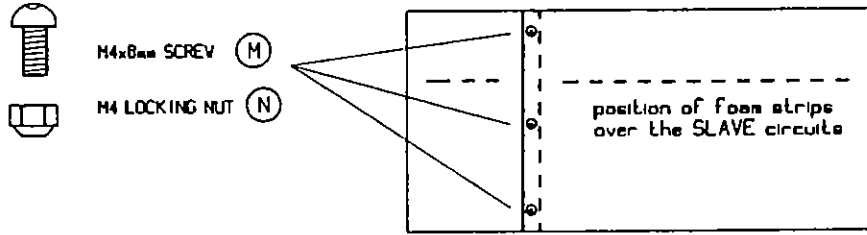


EXPANDER SIDE VIEW



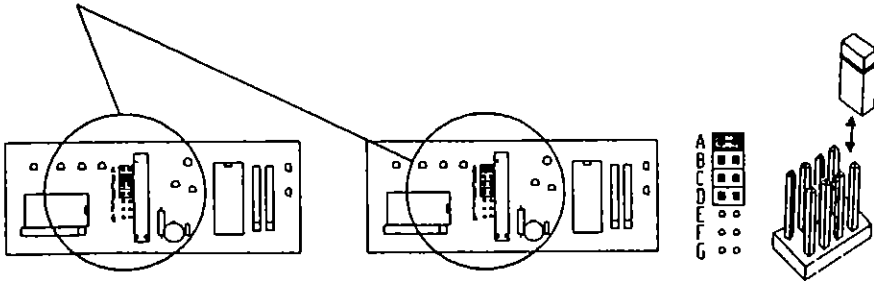
JOINING THE BASES



Keep front extrusion and side trim attached to console.

EXPANDER ASSIGNMENT

CONSOLE AND EXPANDER UPSIDE DOWN



- For CH17 to 20 fit link A
- For CH21 to 24 fit link B
- For CH25 to 28 fit link C
- For CH29 to 32 fit link D

GS3-X8 CHANNEL EXPANDER OPTION

The GS3-X8 expander adds a further eight IO (Input/output) channels to your GS3 console. This unit fixes on to the right hand side of the console to expand a GS3-16 console to 24 or 32 channels (one or two expander units), or a GS3-24 console to 32 channels. Note that you may not expand beyond 32 channels.

The expander IO channels are identical to your console IO channels and enables you to work with a 24 (or 32) track multitrack tape machine, or simply give you more mix inputs. A 24 channel GS3 offers 52 inputs to the stereo mix, and a 32 channel GS3 68 inputs.

Fitting the expander unit requires that you unplug your console, place it upside down on a suitable flat working surface, partly disassemble it to reposition the right hand side trim and attach the front and rear chassis extrusion extenders, plug on the expander IDC harnesses, check the expander assignment links, and re-assemble the expanded console. The expander is supplied with these instructions and a full kit of parts for joining the unit to your console.

PRECAUTION: This work requires part disassembly of your console. Take care to avoid damage to the internal assemblies, connector harnesses, cosmetics and external paint finish. If necessary refer this work to your service agent. Please follow the procedure detailed below and note the precautions highlighted.

UNPACKING THE EXPANDER: Your expander has been packed to avoid damage during transit. Please retain the packing if you intend to ship this unit separately in the future. A side TRANSIT BRACKET is fitted. **Do not remove** this until indicated in the procedure below. Check the contents before proceeding:

- 1x GS3-X8 console expander with fitted:
 - 1x AA1148 Side transit bar,
 - 1x AP0135 Expander Instructions
 - 1x AP0133 Packing sheet
 - 1x orange QA STAGE CARD

- 1x EXPANDER HARDWARE KIT containing:
 - 2x AA1142 Joining brackets
 - 1x AT0033 4mm Hex key
 - 1x AT0002 2-point crosshead screwdriver
 - 6x AB0325 S3 X8 M6 joining studs
 - 8x AB0272 M4 x 6mm taptite screws
 - 3x AB0313 M4 x 8mm screws
 - 1x AN0340 Number sheet 25-32 set

GS3V-X8 CHANNEL EXPANDER OPTION

The GS3V-X8 expander adds a further 8 IO (input/output) channels to your GS3V console. This unit fixes onto the right hand side of your console.

Fitting the expander unit requires that you unplug your console, place it upside down on a suitable flat working surface, partly disassemble it to reposition the right hand side trim and attach the front and rear chassis extrusion extenders, plug on the expander IDC harnesses, check the expander assignment links, and re-assemble the expanded console. The expander is supplied with these instructions and a full kit of parts for joining the unit to your console.

You will require the following hand tools to enable you to expand your console:

- a No:2 crosspoint screwdriver, an 8.0mm and a 2.0mm slot screwdriver.

PRECAUTION: This work requires part disassembly of your console. Take care to avoid damage to the internal assemblies, connector harnesses, cosmetics and external paint finish. If necessary refer this work to your service agent. Please follow the procedure detailed below and note the precautions highlighted.

UNPACKING THE EXPANDER Your expander has been packed to avoid damage during transit. Please retain the packing if you intend to ship this unit separately in the future. A side TRANSIT BRACKET is fitted. **Do not remove** this until indicated in the procedure below. Check the contents before proceeding:

PROCEDURE:

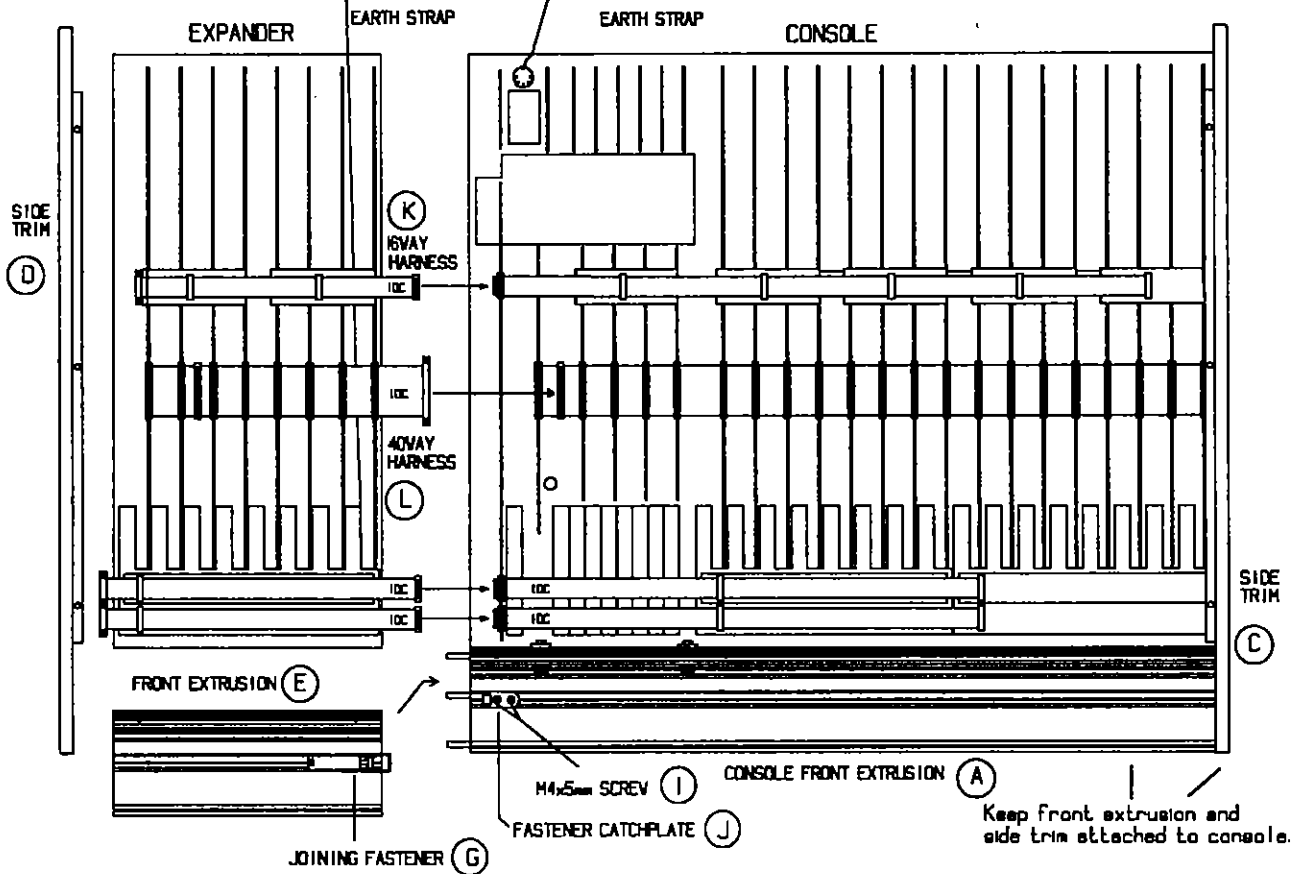
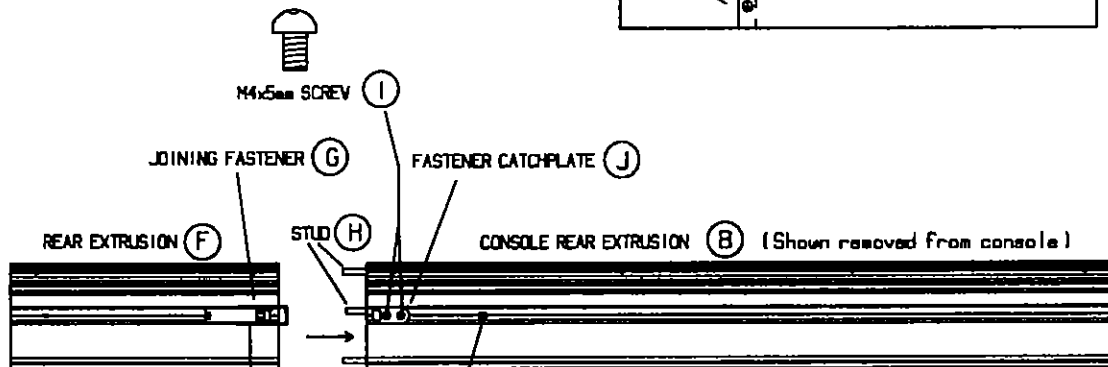
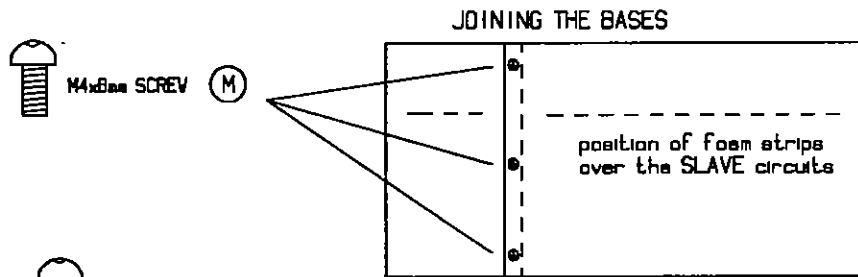
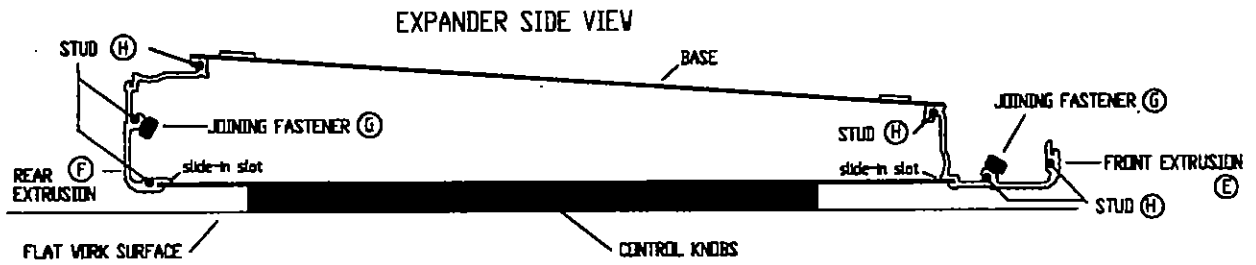
Please follow these instructions carefully and in the correct sequence:

1. Disconnect the power supply and all cables from the console.
2. Place your console upside down on a suitable flat work surface or level floor. This should be larger than the combined size of the console and expander(s).

PRECAUTIONS: Make sure that your work surface is clear of dirt and debris which may damage the control knobs and paint finish.

3. Remove the console right hand side trim (D) (your left with the console upside down). To do this first remove the large side trim hex screws.
4. Remove the rear base screws and the 3x rear left hand side trim hex screws to free the console rear extrusion (B). Carefully slide this away from the console ready for fixing on the rear expander extrusion (F). Be careful not to stretch the green wire earth strap that connects between this extrusion and the console.

PRECAUTION: Do not remove the console base or move the front extrusion (A). This is now held in place by the base and one side trim (C).



CONSOLE AND EXPANDER UPSIDE DOWN

5. Prepare the GS3V-X8 expander by placing it upside down to the left of your console. Carefully remove the expander base, transit bar, and front and rear extrusions (E and F). Be careful not to stretch the green wire earth strap that connects between the rear extrusion and the expander.

EXTENDING THE EXTRUSIONS:

6. Extend the console rear extrusion (B) by first screwing 3 of the M6 joining studs (H) into the extrusion holes to the depth of the stud thread. Now offer up the expander rear extrusion (F) and slide them together on the 3x studs.
7. Place the fastener coupling (G) over the catchplate and the screw in the fastener handle so that it snaps closed when fully seated.
8. Extend the console front extrusion (A) using the same method as in 6. and 7.

PRECAUTION: Be careful not to pull the console front extrusion (A) off the panel assembly.

ATTACHING THE EXPANDER:

9. Position the expander front panel next to the console panel and slide it forwards into the expanded front extrusion slot.
10. Offer up the expanded rear extrusion so that the console and expander front panels are positioned in the extrusion slot, and the console base screw holes align with the extrusion holes. Screw in one rear base screw to hold it in place.

PRECAUTION: Be careful not to trap the green earth strap wires.

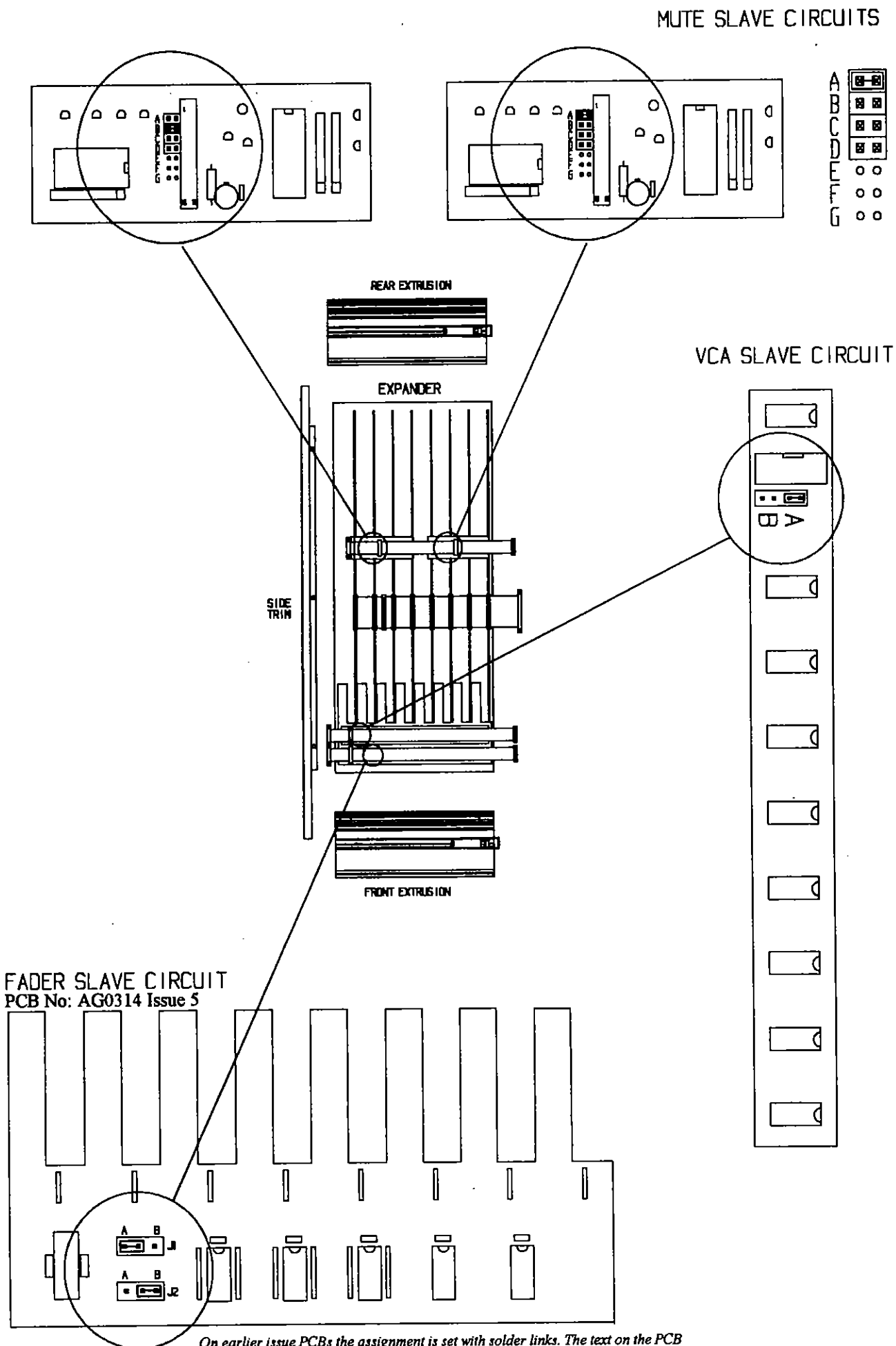
11. Screw in the rear hex screws to secure the console left hand side trim (C).
12. Refit the console right hand trim (D) on to the expander.
13. At this point check that the front panels, side trims, and front/rear extrusions are correctly aligned and in place.

PLUGGING ON THE EXPANDER HARNESES:

14. Remove the main console base front, rear and side screws. Lift off the base.
15. Plug the expander 40way IDC harness (L) on to the male plug on the console 40way harness.
16. Plug the 3 expander 16way IDC harnesses (K) on to the 16way male plugs on the Keyboard circuit assembly (GS3V-16), or the floating male plugs (GS3V-24).

PRECAUTION: Make sure that the connectors are correctly aligned and pressed on.

FIGURE 2: EXPANDER ASSIGNMENT



On earlier issue PCBs the assignment is set with solder links. The text on the PCB details which links to set corresponding to the expander position i.e. 17-24 or 25-32

CHECKING THE EXPANDER ASSIGNMENT:

17. Your expander is supplied assigned as channels 17 to 24. If you are expanding from 24 channels you need to re-assign for channels 25 to 32. Please refer to Figure 2.

a) Reposition one link on each of the two expander Mute Slave Circuit boards as follows:

For channels 17 to 20 fit link A

For channels 21 to 24 fit link B

For channels 25 to 28 fit link C

For channels 29 to 32 fit link D

b) Reposition one link on the VCA Slave Circuit boards as follows:

For channels 17 to 24 fit link A

For channels 25 to 32 fit link B

c) Reposition two links on the Fader Slave Circuit board as follows:

For channels 17 to 24, link J1 to A and link J2 to B

For channels 25 to 32, link J1 to B and link J2 to A

EXTENDING AND REFITTING THE BASE:

18. Check your work and remove any dirt or debris from within the console.

19. Join the console base to the expander base using the 3x M4x8mm screws (M) provided. Make sure that the bases are correctly aligned with the foam strips on the same side.

20. Refit the expanded base making sure that the foam strips align with the position of the SLAVE circuit assemblies. Tighten the base screws.

CHECKING THE CONSOLE:

22. Position the console correct side up and plug in the power and signal leads. Test for correct console operation. If Peel off and stick on the numbers 25-32 if applicable.

Your console is now ready for use.