

# **ALLEN&HEATH**

## **Parts identification sheet**

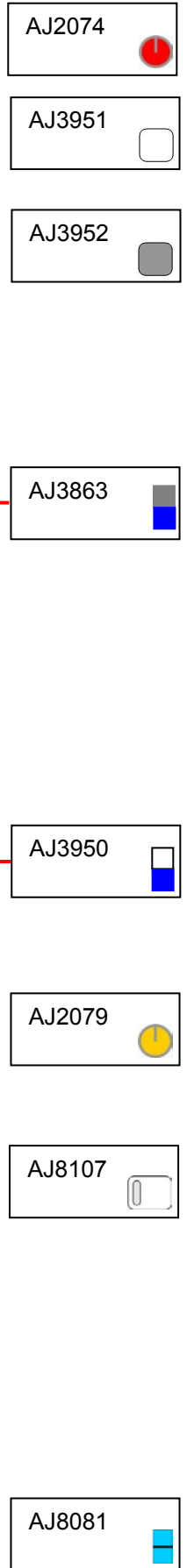
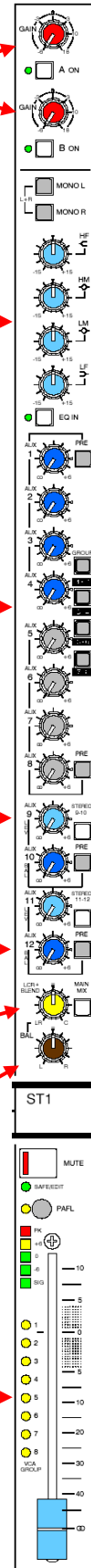
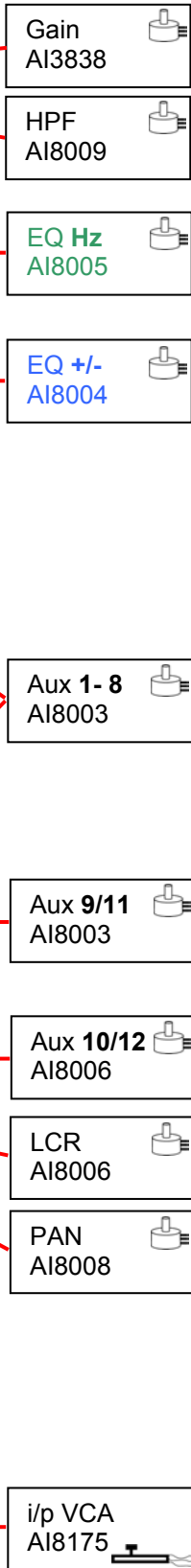
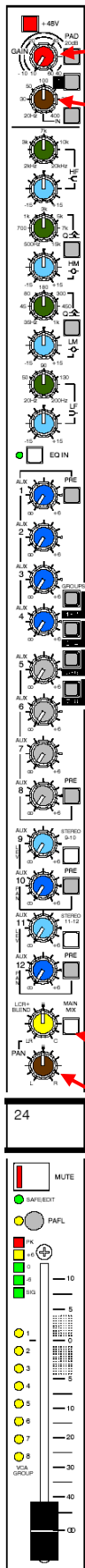
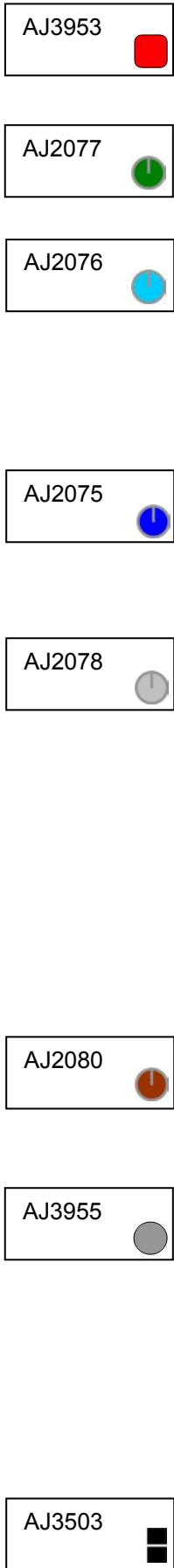
# ML4000

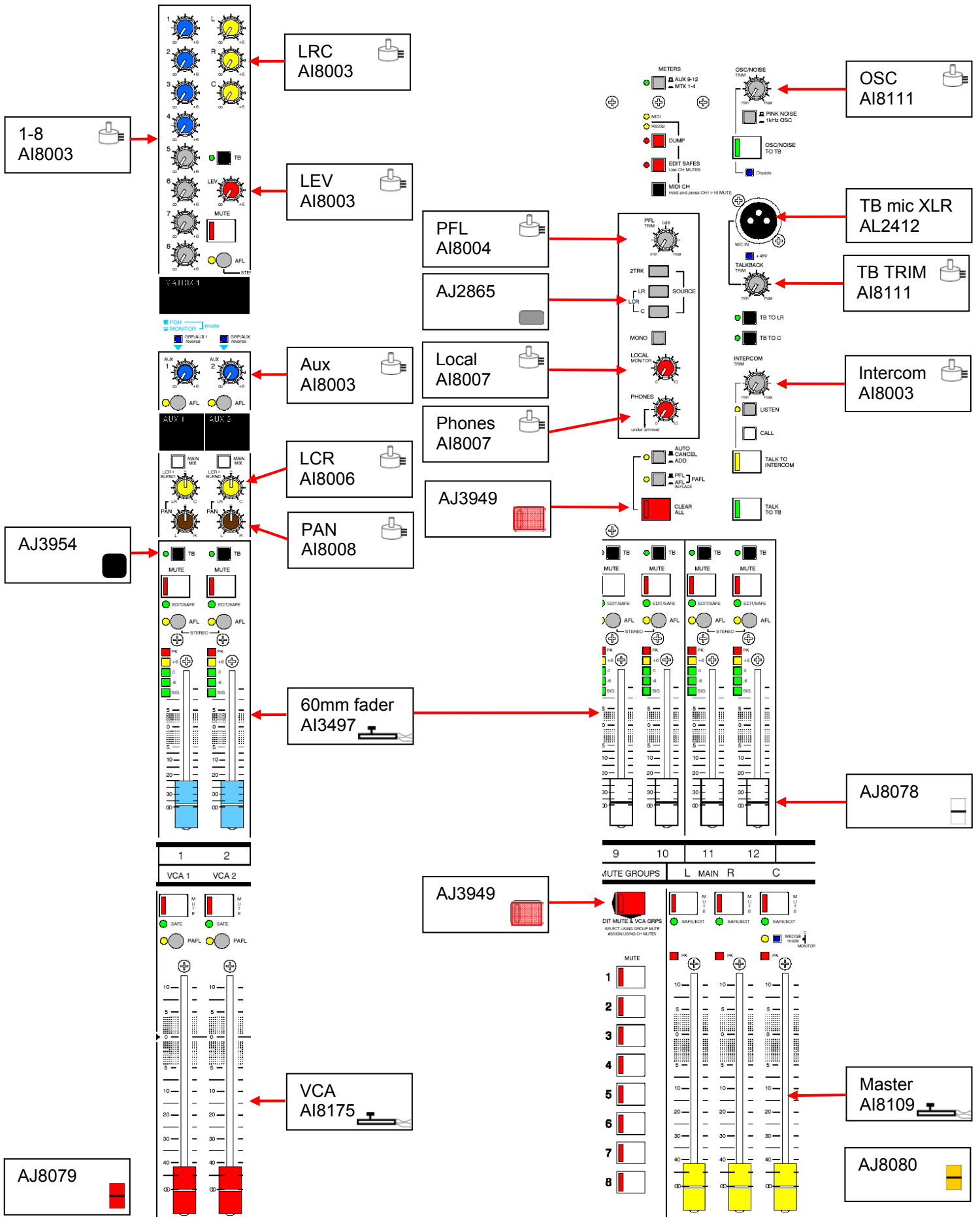
### **How to order parts**

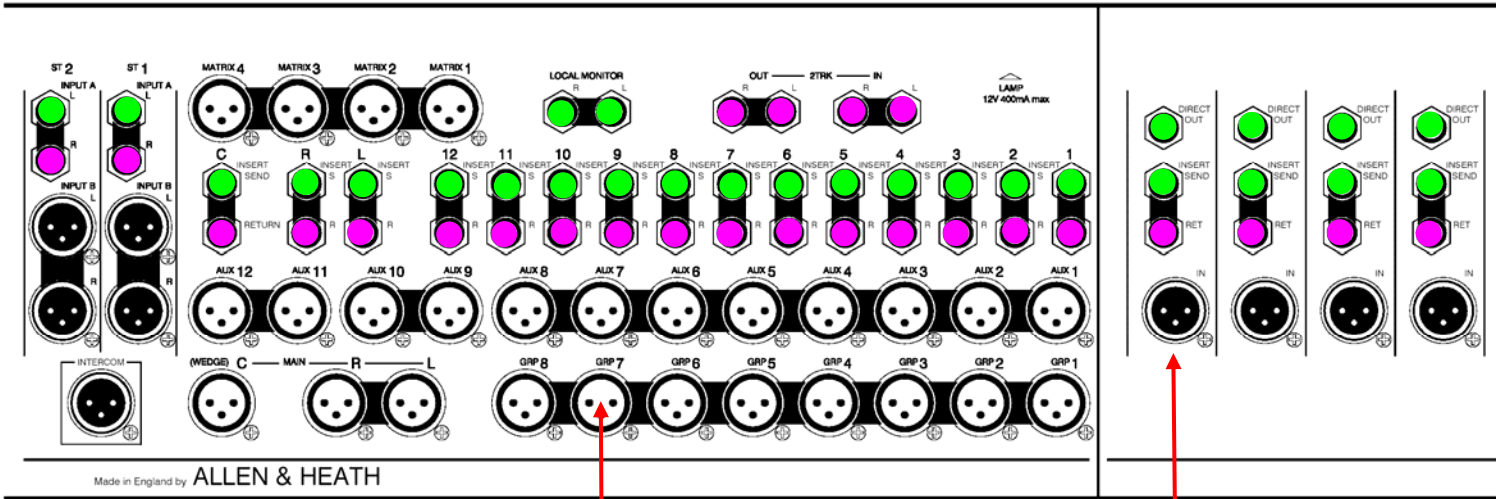
Parts must be ordered from our distributor in your territory. A list of international distributors can be viewed at <http://www.allen-heath.com/UK/distributors.asp>

UK parts must be ordered through an appointed A&H dealer or service centre. A list of UK service centres can be viewed at [http://www.allen-heath.com/UK/service\\_centres.asp](http://www.allen-heath.com/UK/service_centres.asp)

**POTS FADERS & KNOBS:**




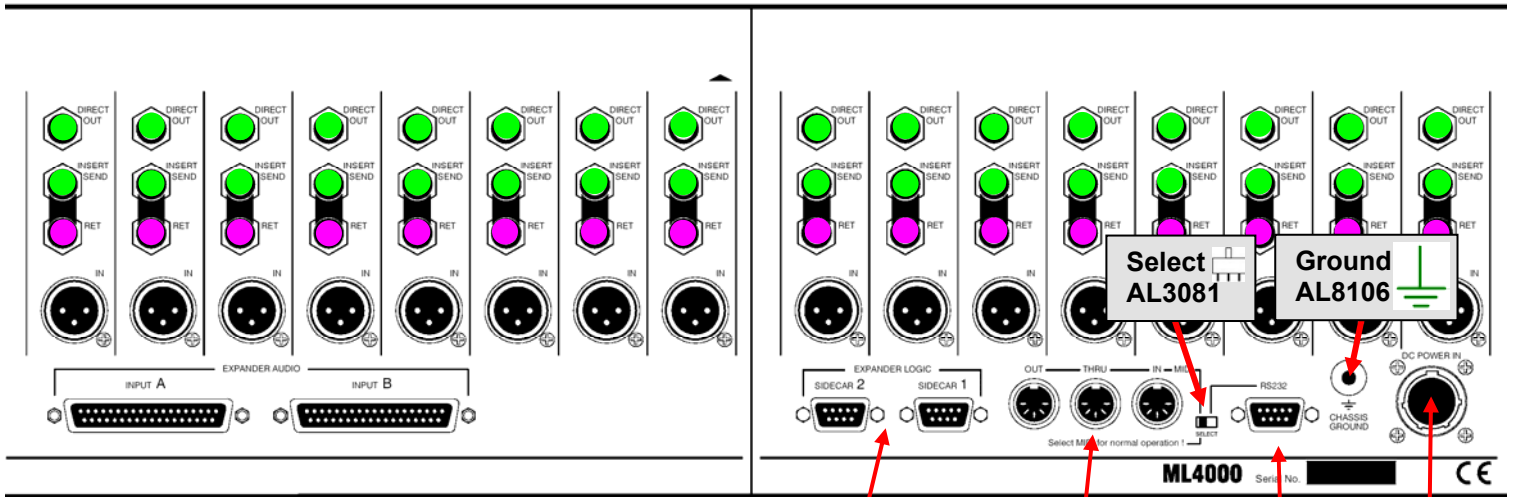





Made in England by ALLEN & HEATH

o/p XLR  
AL2411 

i/p XLR  
AL2410 

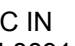


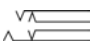

Expander i/p  
AL3956 

Expander logic  
AL3746 

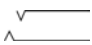

MIDI  
AL3962 

RS232  
AL3746 

DC IN  
AL3891 

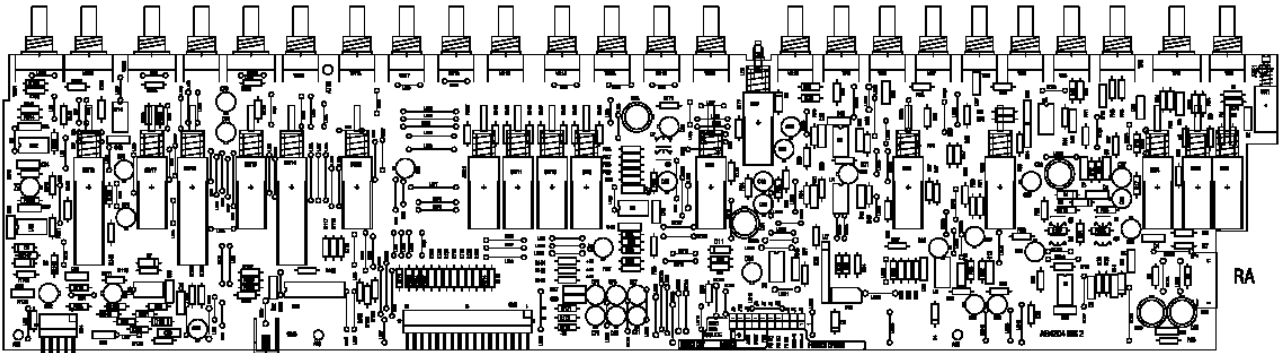
Jack switched AL3410  

Insert return  
2TRK IN / OUT  
ST1/2 R

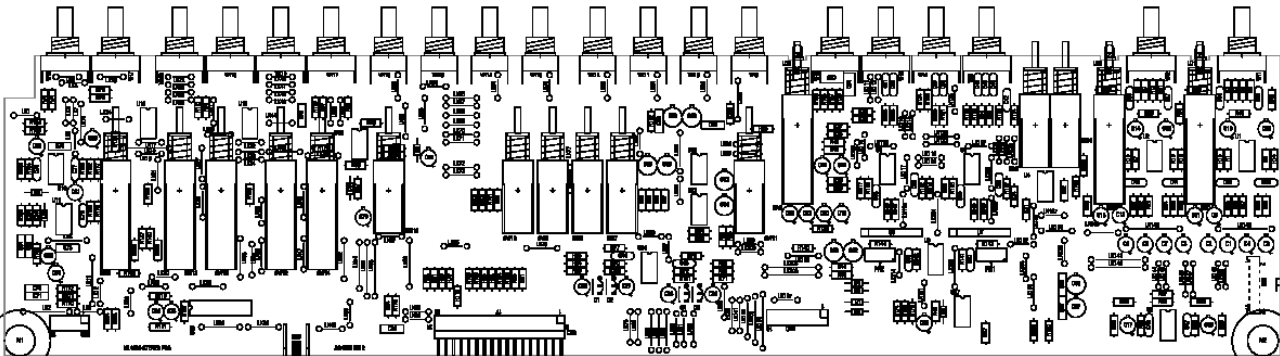
Jack un-switched AL3407  

Direct out  
Insert send  
Local Monitor  
ST1/2 L

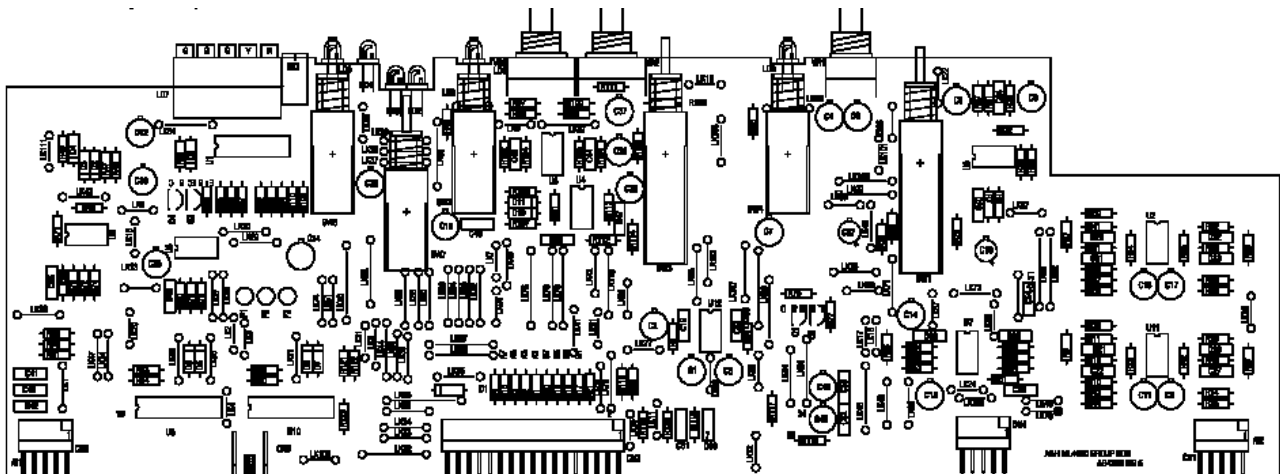
**INTERIOR PARTS:**



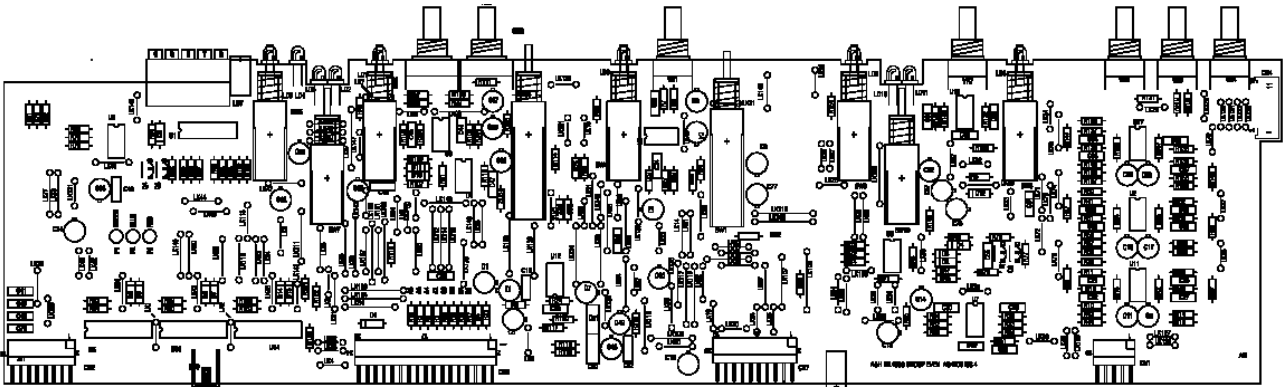
Mono i/p  
002-649



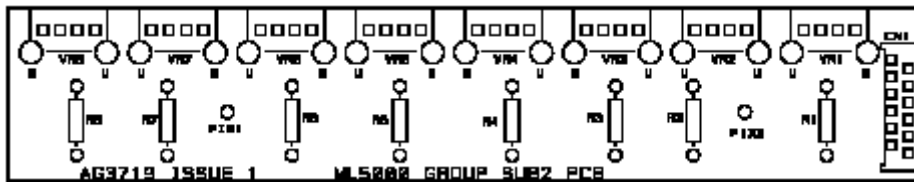
Stereo i/p  
002-655



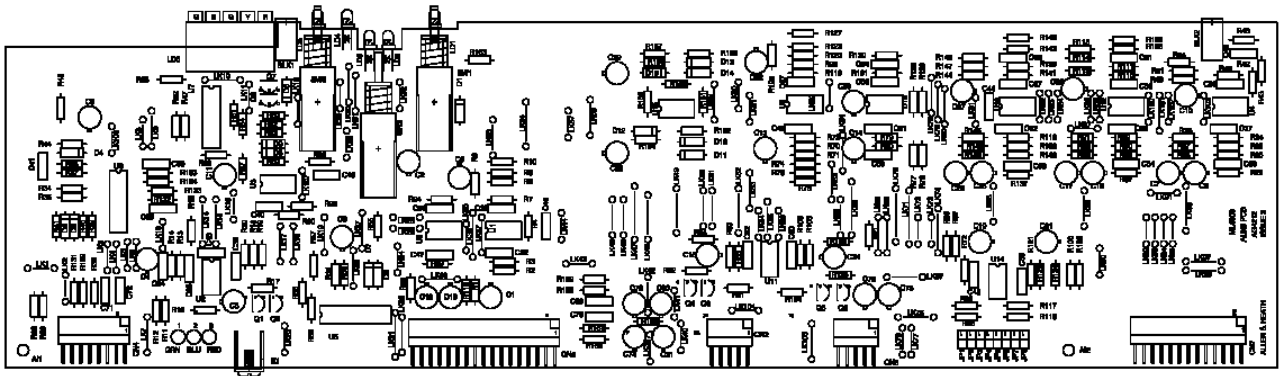
Group 1, 3, 5, 7  
002-653



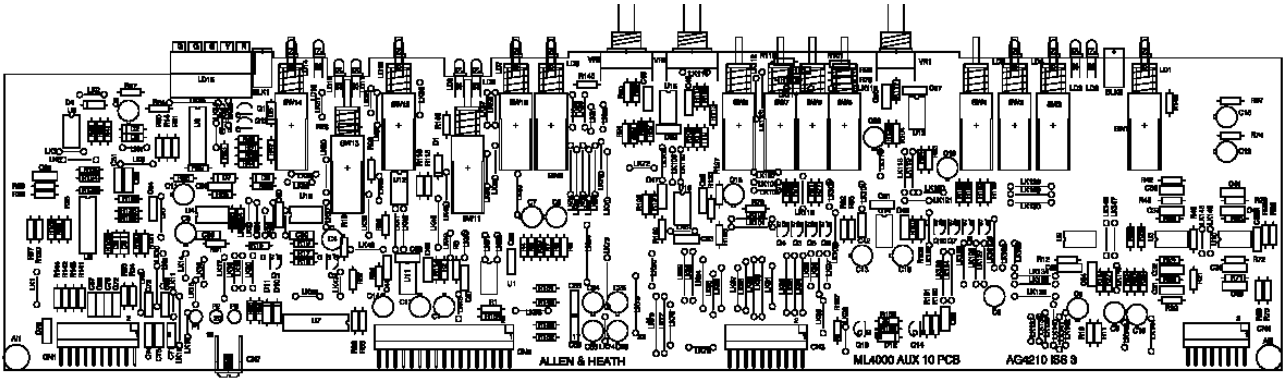
Group 2, 4, 6, 8  
002-654



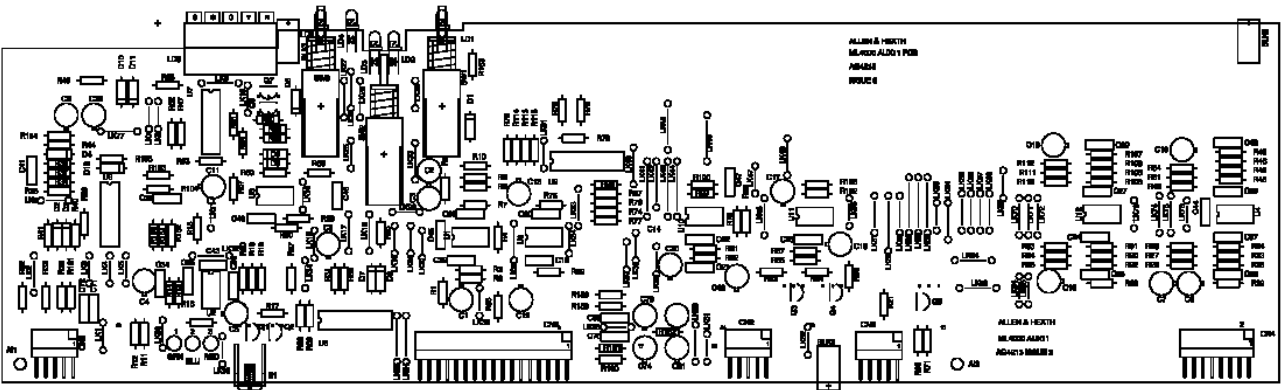
Group sub PCB  
002-553



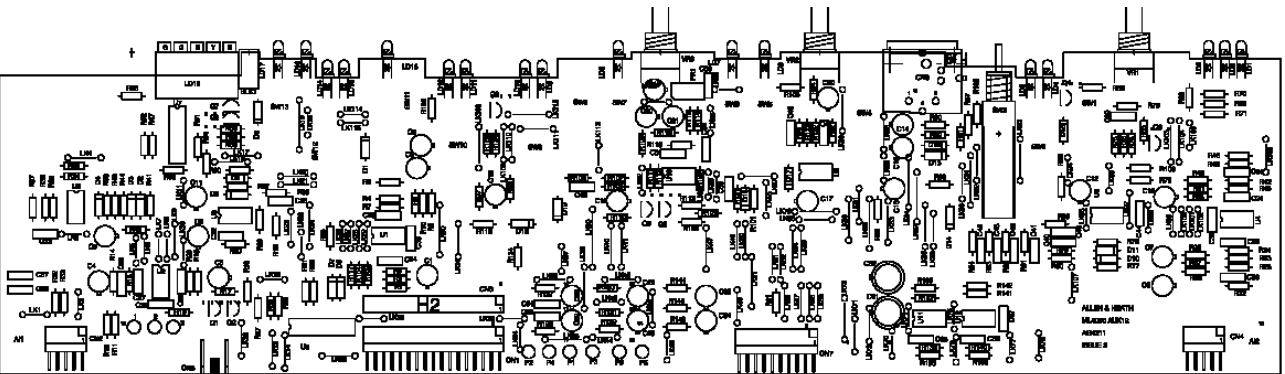
Aux 9  
002-656



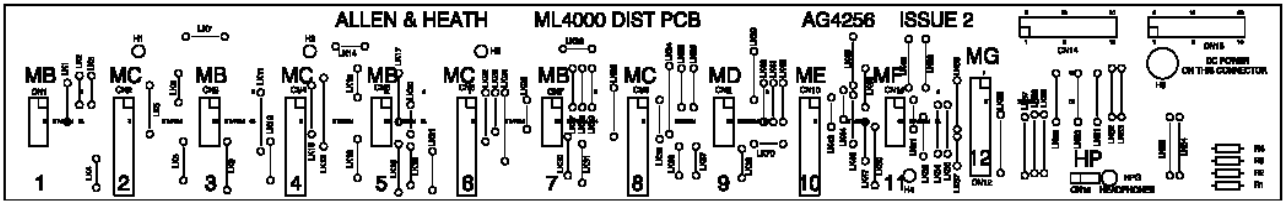
Aux 10  
002-665



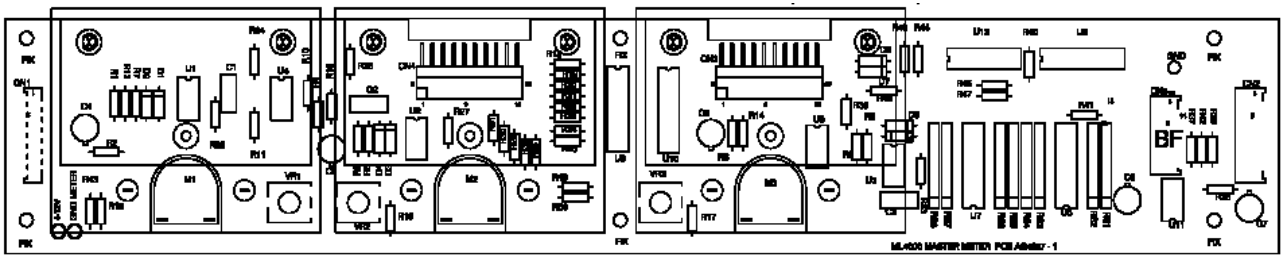
Aux 11  
002-657



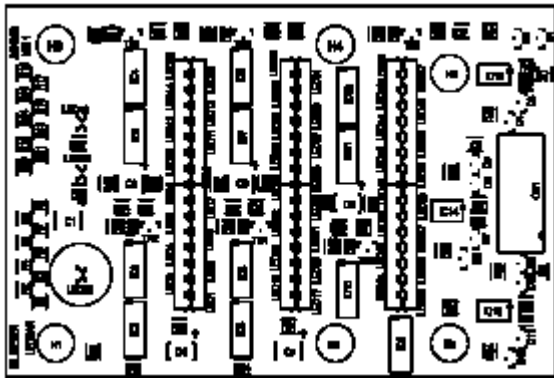
Aux 12  
002-666



Master distribution PCB  
002-667

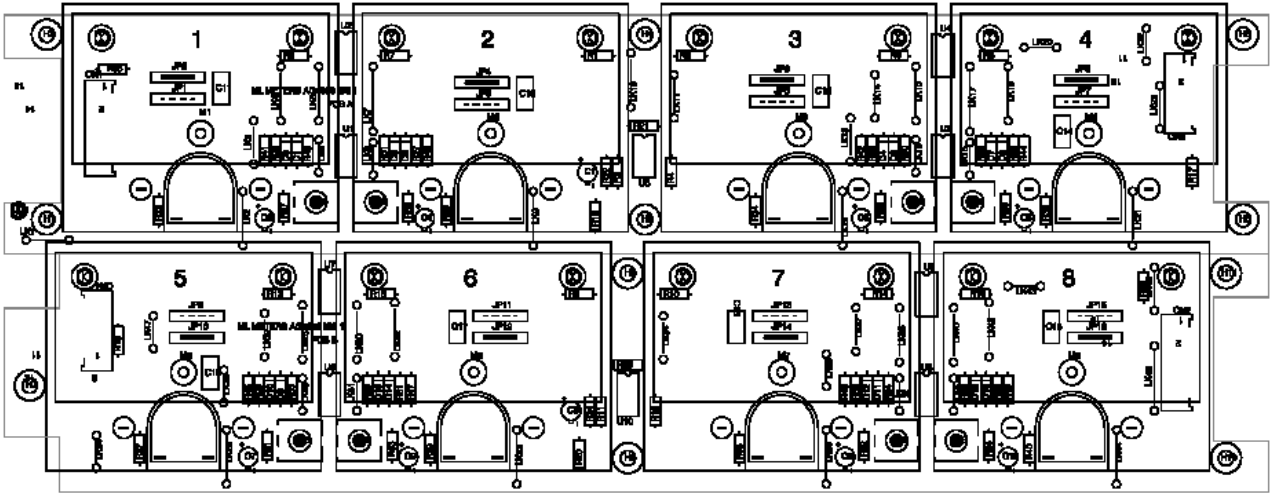


Master meter  
002-714

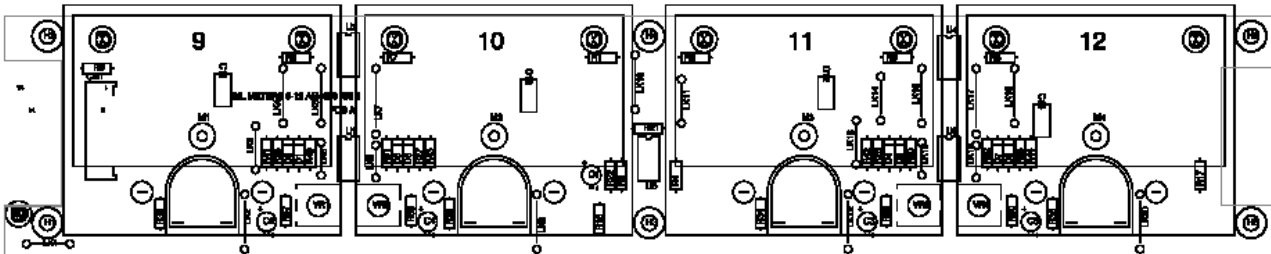


LED bar meter  
002-713

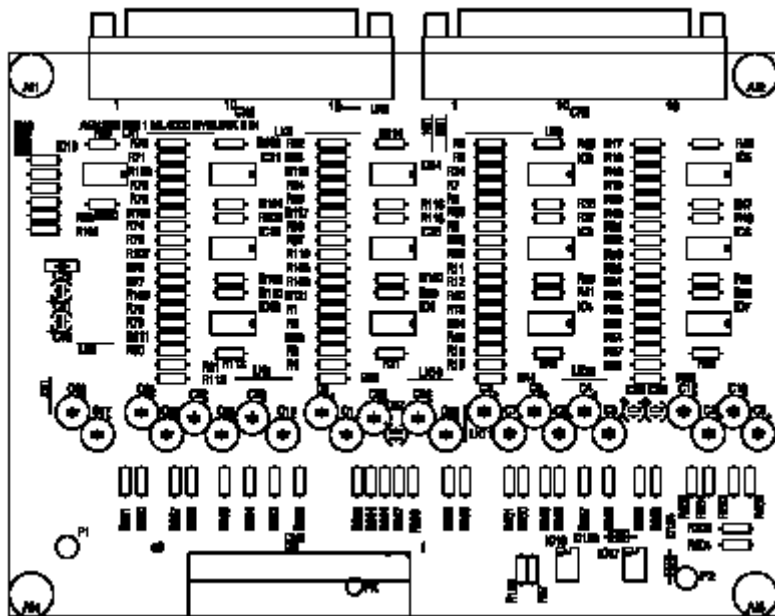




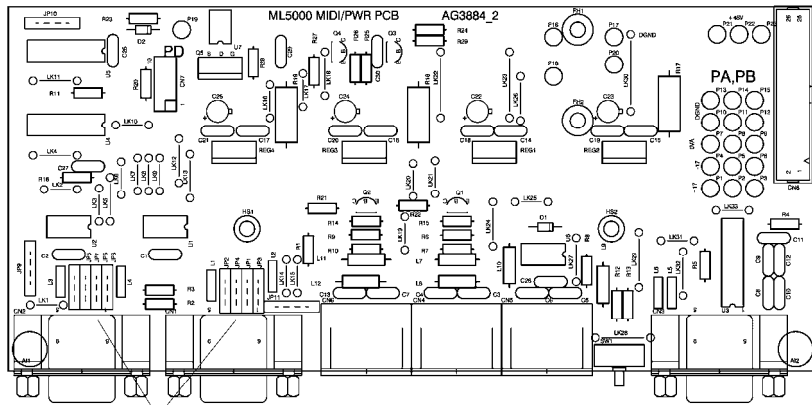
Meters 1 - 8  
002-715



Meters Aux 9 - 12  
002-694

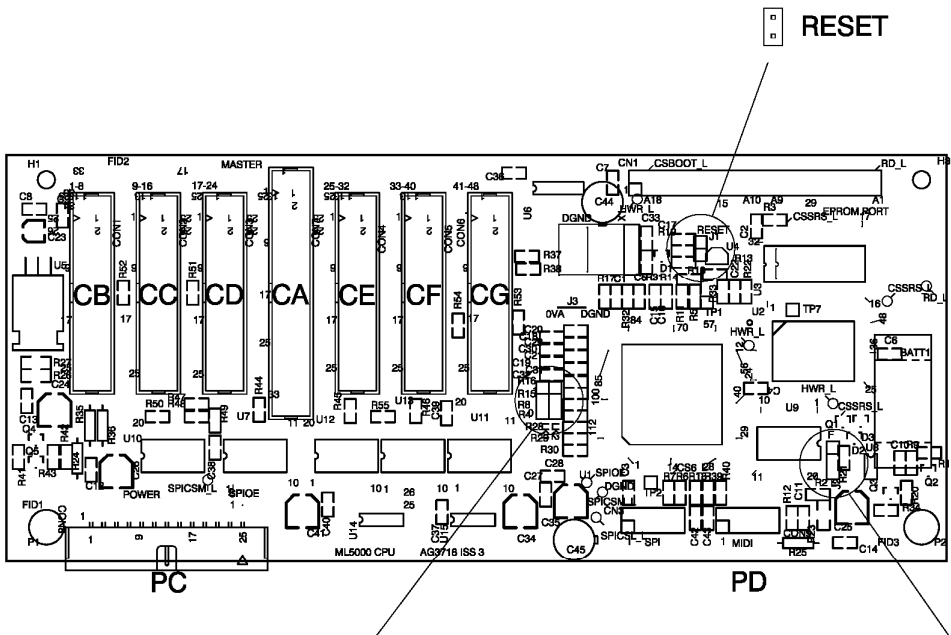


Expander Sys-link i/p  
002-670



CONSOLE/SIDECAR ASSIGN LINKS

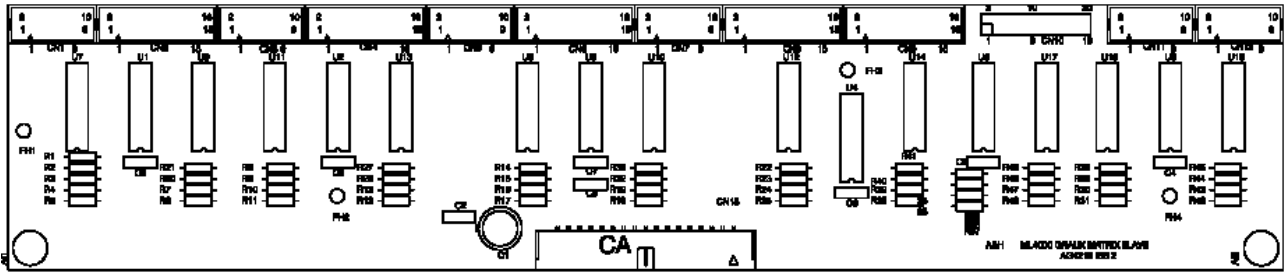
MIDI power PCB  
002-575



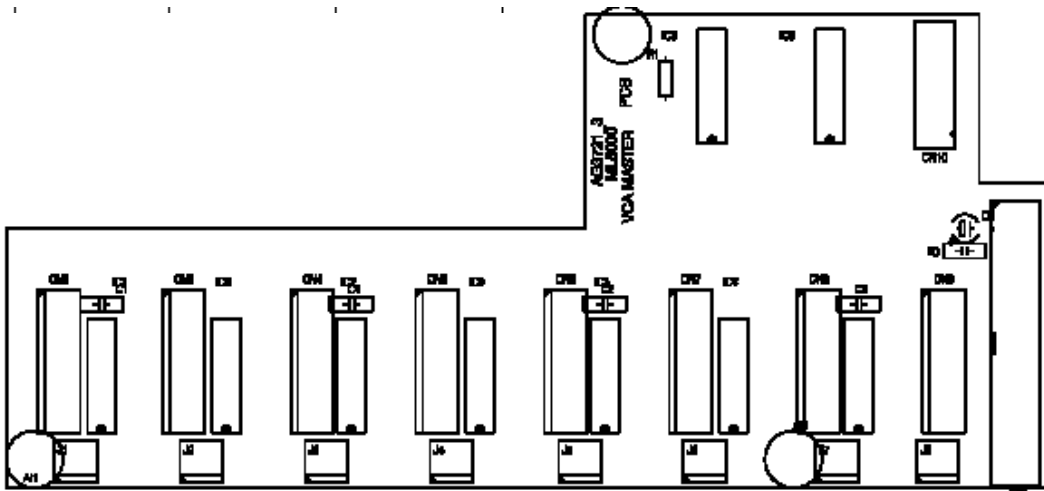
- |   |  |                |   |   |  |                   |
|---|--|----------------|---|---|--|-------------------|
| 1 |  | ML4000 SIDECAR | ✓ | F |  | FLASH (NORMAL)    |
| 0 |  | ML4000 CONSOLE |   | F |  | EPROM (BOOT LOAD) |
| 1 |  | ML5000 SIDECAR |   |   |  |                   |
| 0 |  | ML5000 CONSOLE |   |   |  |                   |

ASSIGN LINKS ACCORDING TO CONSOLE TYPE

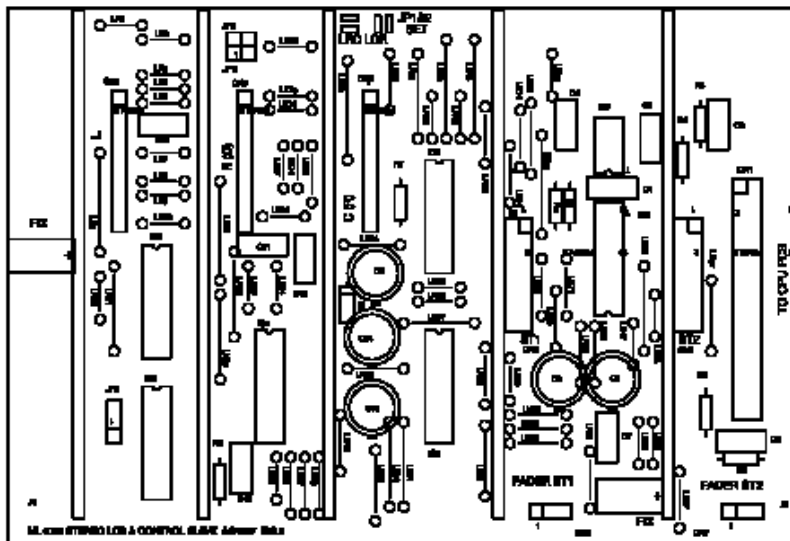
CPU PCB  
002-550



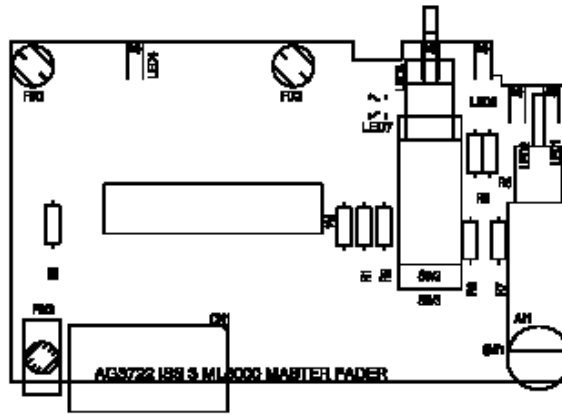
GRAUX master slave  
002-661



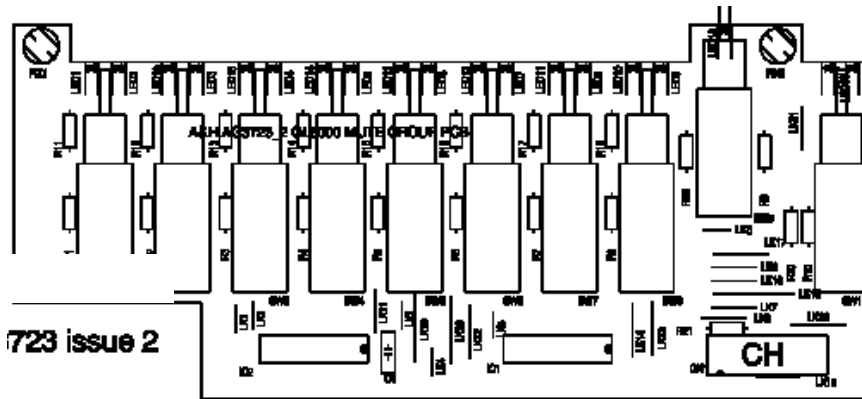
VCA master slave  
002-567



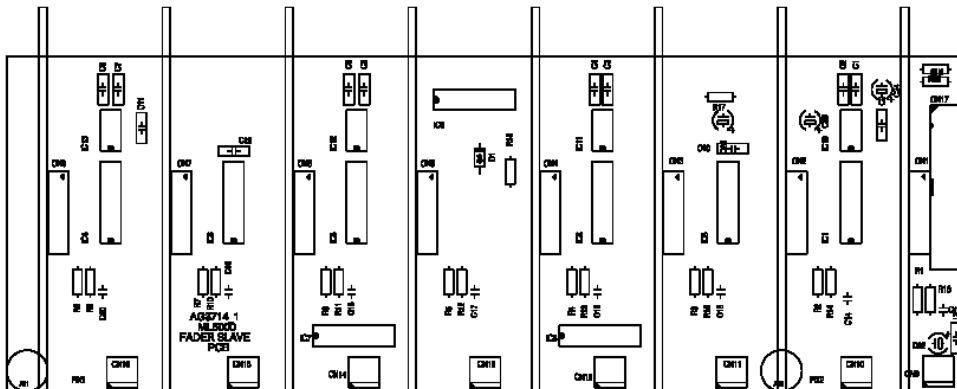
LRC stereo slave  
002-659



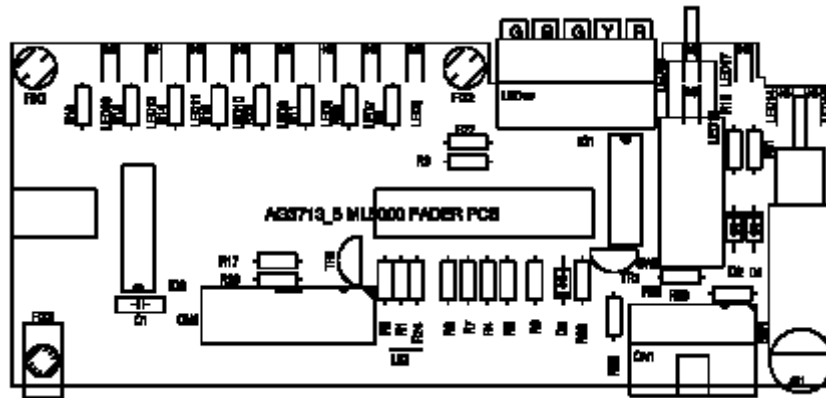
Master fader VCA 002-557  
 Master fader L/R 002-588  
 Master fader CTR 002-589



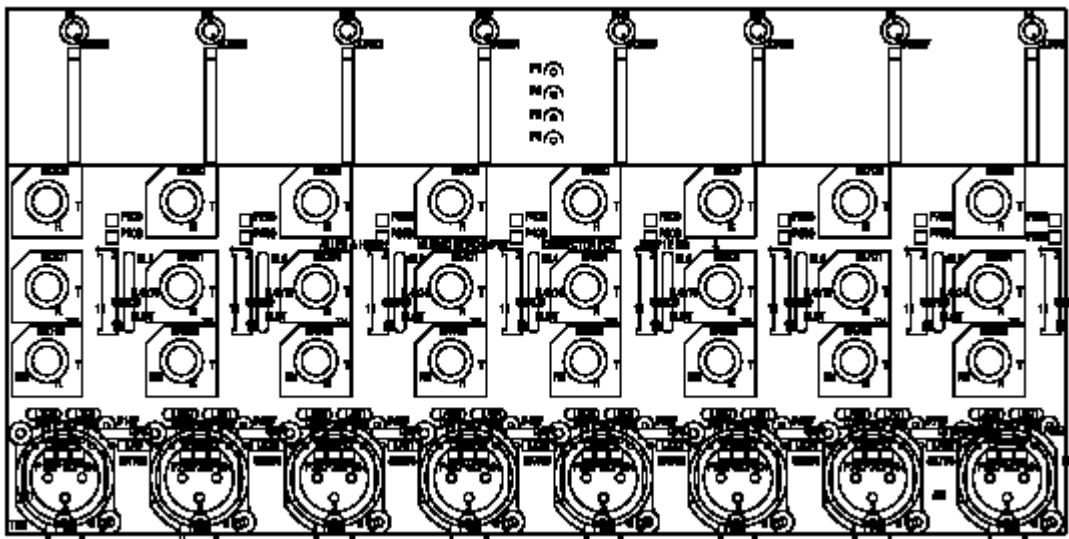
Mute group PCB  
 002-563



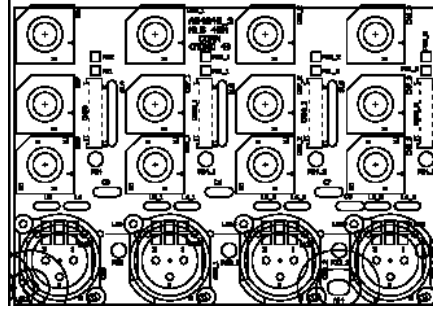
Mono fader slave  
 002-551



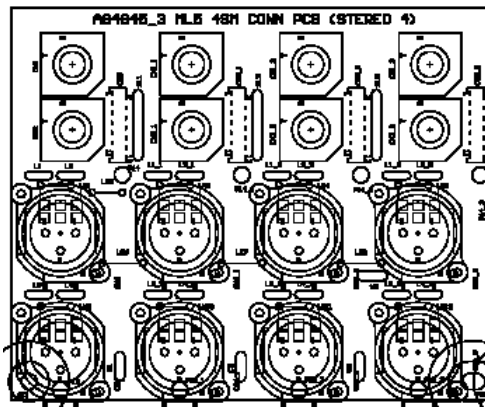
Mono fader PCB  
002-530



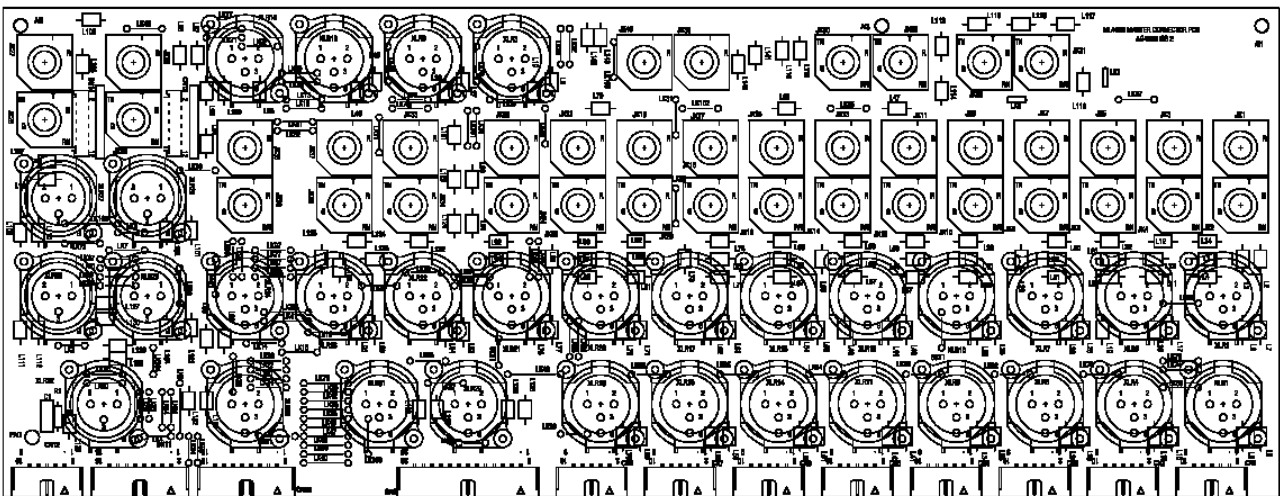
Mono connector  
002-560



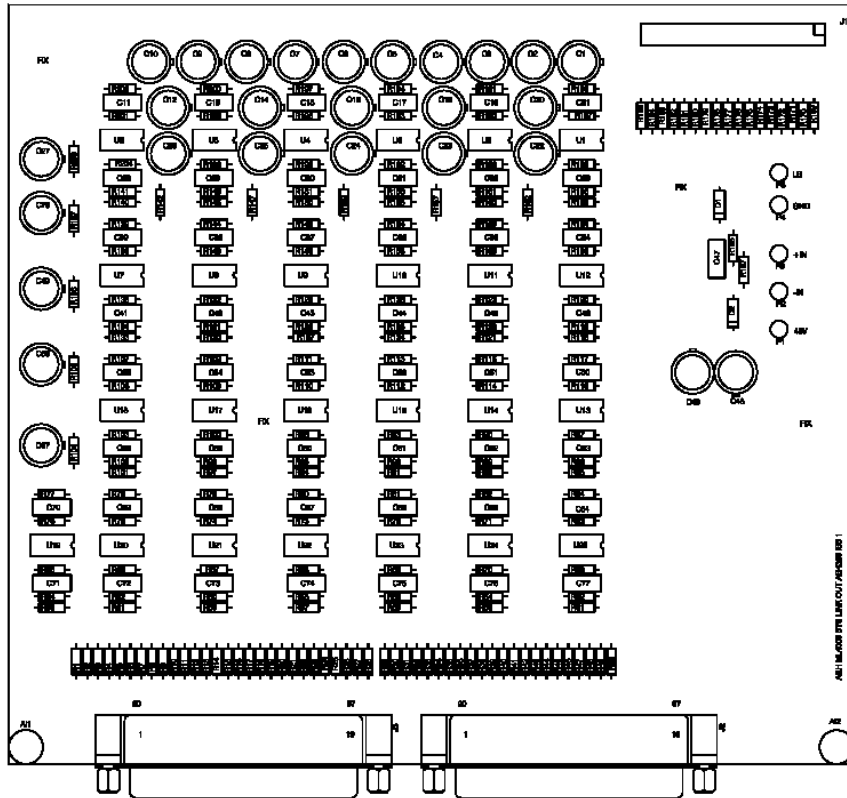
4M connector (B version)  
003-188



4S connector (B version)  
003-198



Master connector  
002-662



Sys-link OUT  
 002-696