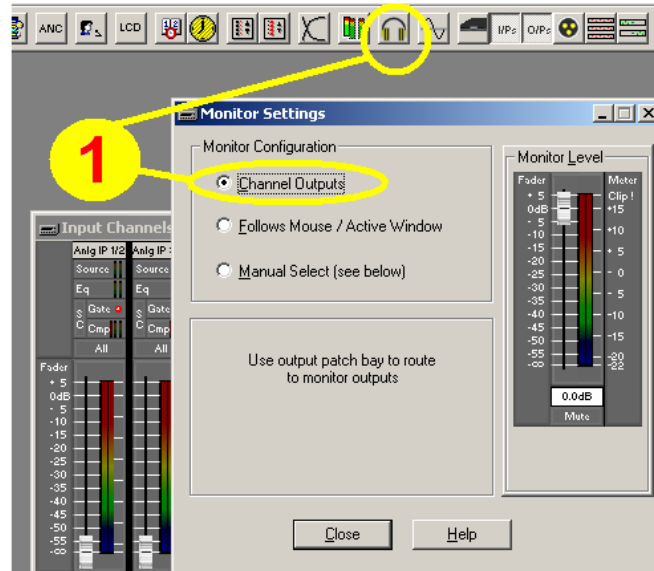


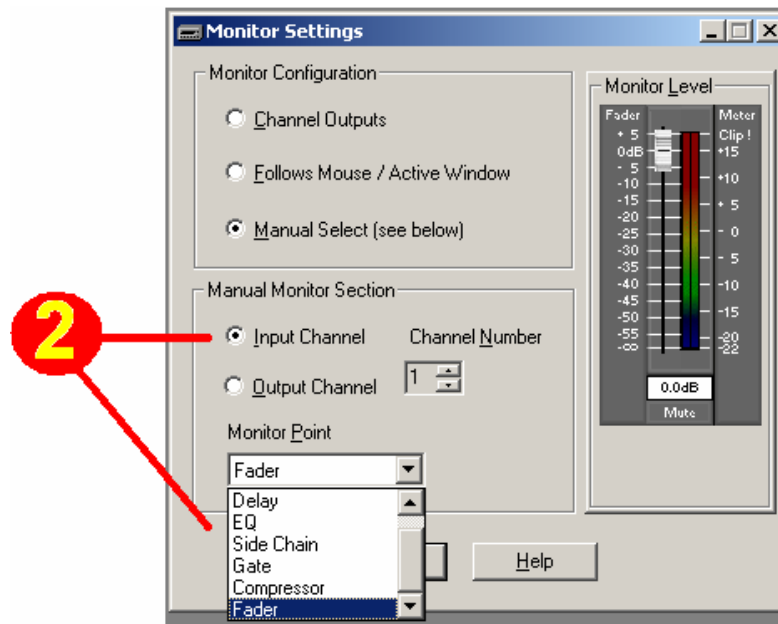
Monitor Ripple Through / Mouse follow

The monitor bus can source its signal either from:

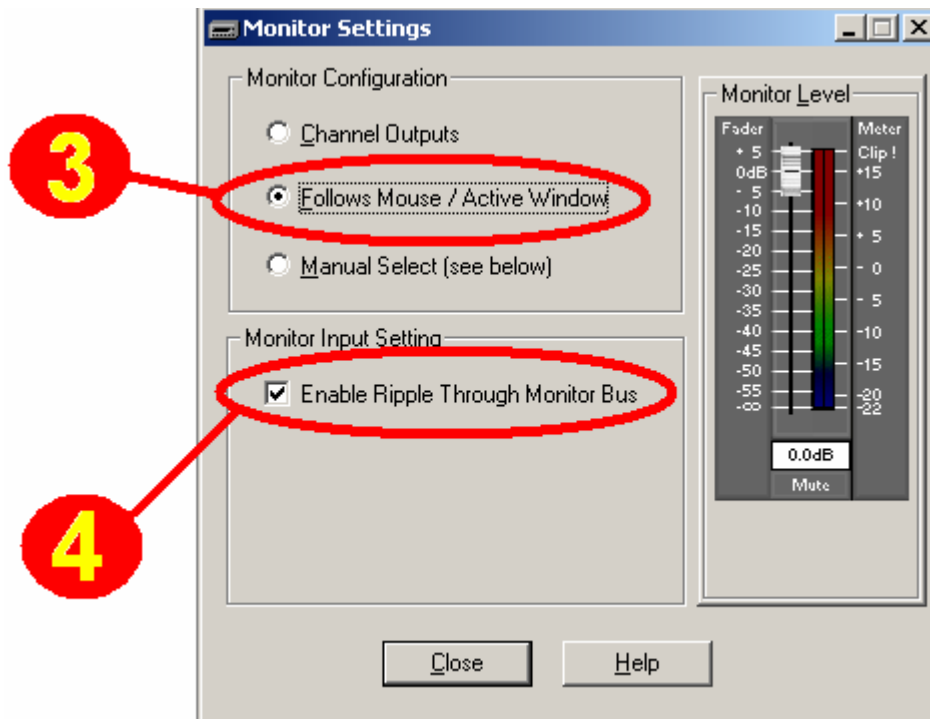
1. Channels. Inputs can be routed to Mon OUT L & R as extra outputs – typically 9 & 10.



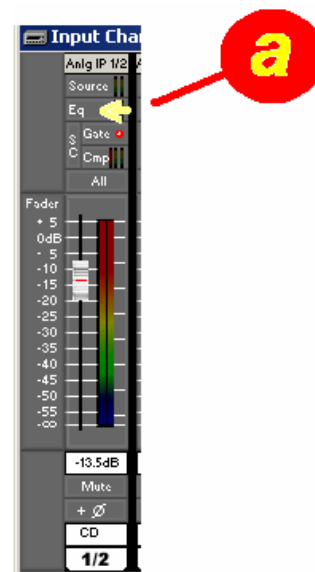
2. Manual Select. The monitor bus can source its signal from any designated i/p or o/p channel at various points in the signal path.



3. The monitor bus can source signal from wherever the mouse pointer is on any active window (see a).
4. If *Ripple Through* is enabled, multiple iDR units can be monitored.



The monitor signal here will be taken at the EQ Of i/p channel 1/2 because this is where the Mouse pointer is positioned.



Network Connection for multiple iDR units.

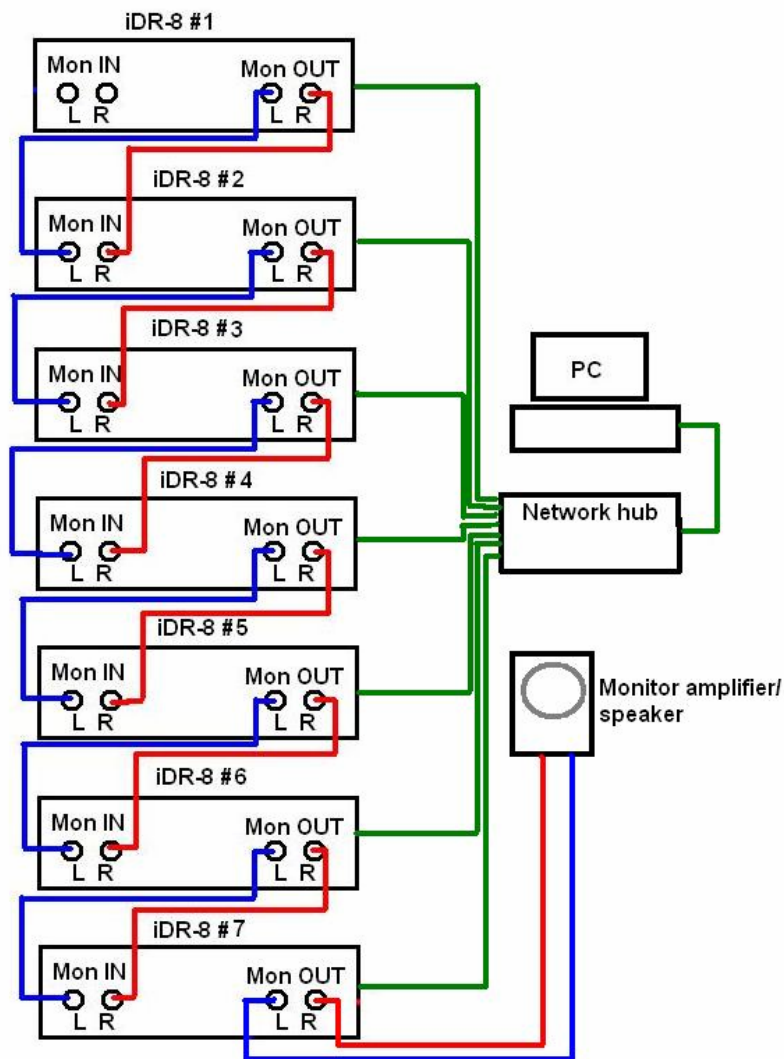
Multiple iDR units must be connected via a network hub to the computer. On the computer, open the System Manager window for any iDR unit and the monitor buss will source signal from wherever the mouse pointer is in an active window.

Audio connection for multiple iDR units.

Chain iDR units together using the analog MON OUT and MON IN connections. Take the MON OUT of iDR#1 and connect it to the MON IN of iDR#2.

Take the MON OUT of iDR#2 and connect it to the MON IN of iDR#3.

Take the MON OUT of the last iDR unit in the chain and connect it to the amplifier/speaker used for listening.



With this setup, any signal on any iDR unit can be instantly monitored from the PC. Simply open the System manager window for any iDR and choose the signal to be monitored by moving the mouse pointer.