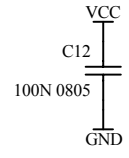
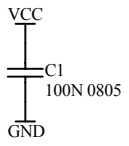
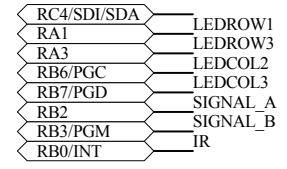
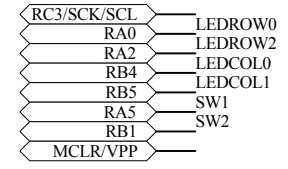
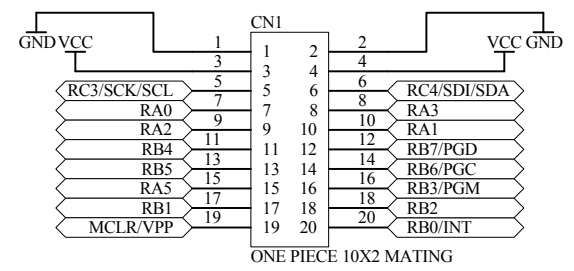
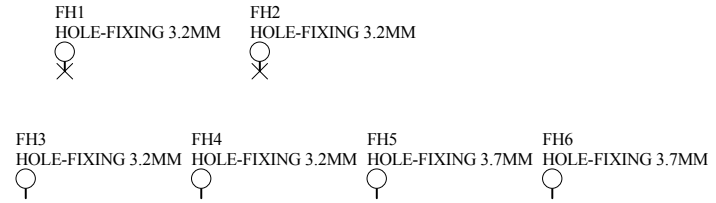


The LED's are operated in pulsed mode, being on, if required, for approx 1/8 of the time. The current in the green LED's when on is circa 32mA and in the reds it is 18 mA. Only 1 LED per column is on at a time. A single LEDROW bit is set and then any columns which are to have the LED in that row lit are turned on.



PL4



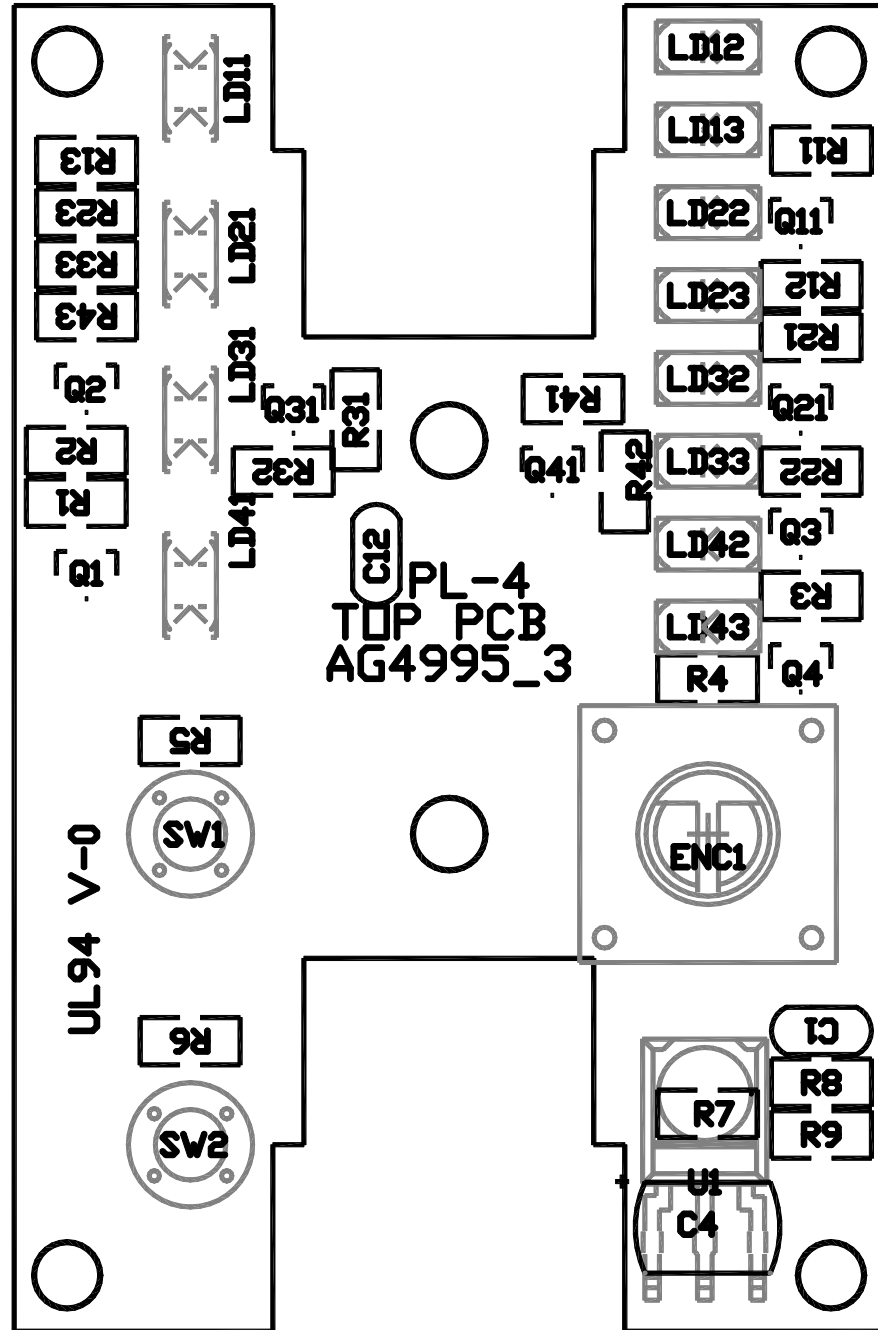
ISSUE	BY	DATE
ORIGIN		
A	GG	20/8/02
B	GG	6/9/02
C	GG	28/10/02
1	JB	12/11/02
2	GG	11/4/04
3	GG	1/11/04

FILE: PL-4 Top Board AG4995_3.Sch
 PRINTED: 12:43:47 19-Jan-2006

TITLE: PL-4 / PL-12 TOP BOARD
 PAGE:
 DRG No: AG4995
 ISSUE: 3
 SHEET: 1 OF 1
 A3

ALLEN&HEATH
 Kernick Industrial Estate,
 Penryn, Cornwall,
 England. TR10 9LU
 Tel: +44 (0)8707 556250
 Fax: +44 (0)8707 556251

Top Overlay



Bottom Overlay

