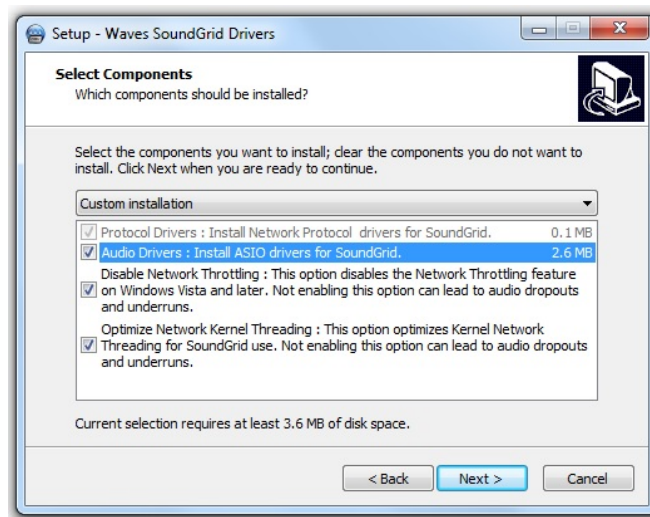


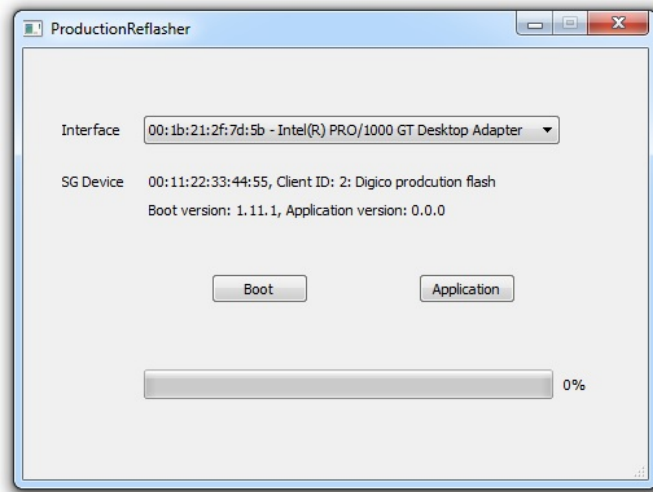
Production reflasher tool - instructions:

1. You need to have windows PC, 64bit.
2. From the files you've received open the directory named "Drivers" and double click the file [WavesSoundGridDriverSetup.exe](#). This will install the necessary driver. During the installation you'll come across the following screen:

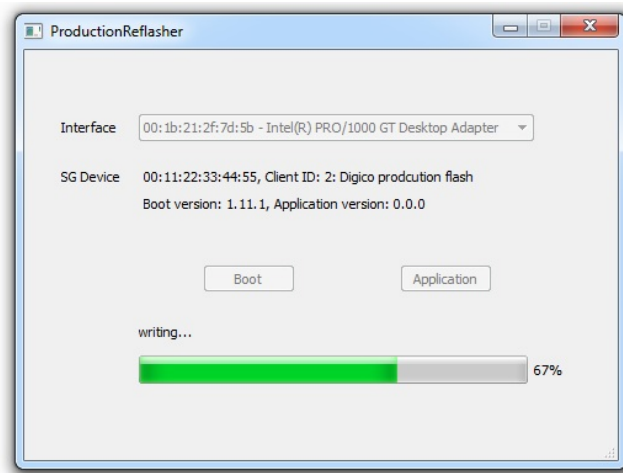


You must select all check boxes and then proceed.

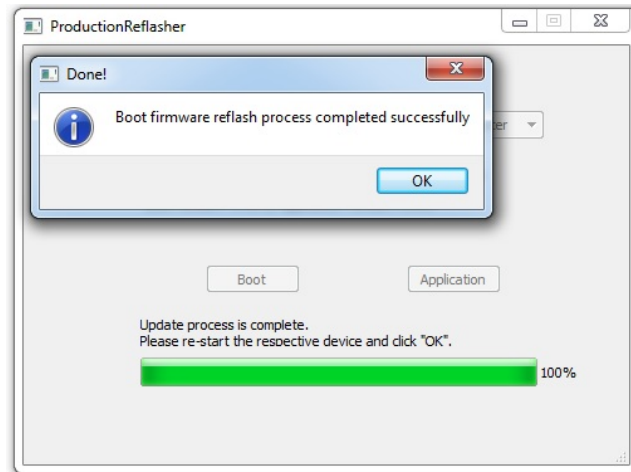
3. After the installation you need to restart the computer. Note: driver installation is only required once.
4. Connect the device that needs to be reflashed, via a 1gig enabled switch, to the computer LAN card. Make sure no other devices are connected to the switch.
5. Now you can use the Production reflasher tool: open the directory and run [ProductionReflasher.exe](#)
6. A screen will come up. In "Interface", please choose the correct LAN port the card is connected to and verify the card is identified in the "SG Device" section. See picture below:



Press the “**Application**” button to start the reflash process. The progress bar will indicate the progress:



At the end of the process you'll get a confirmation message (it should say “Application FW reflash completed successfully”)



7. **After the Application reflash completes successfully** - Restart the M-Waves Card and PRT Application.
8. Now press the **"boot"** button in the PRT Application.
9. **After the Boot reflash completes successfully** - Restart the M-Waves Card.
10. If MRSB/LV1/SGS inventory detects **FW update** for the M-Waves v3 card now, make sure to update it.

- Finish -