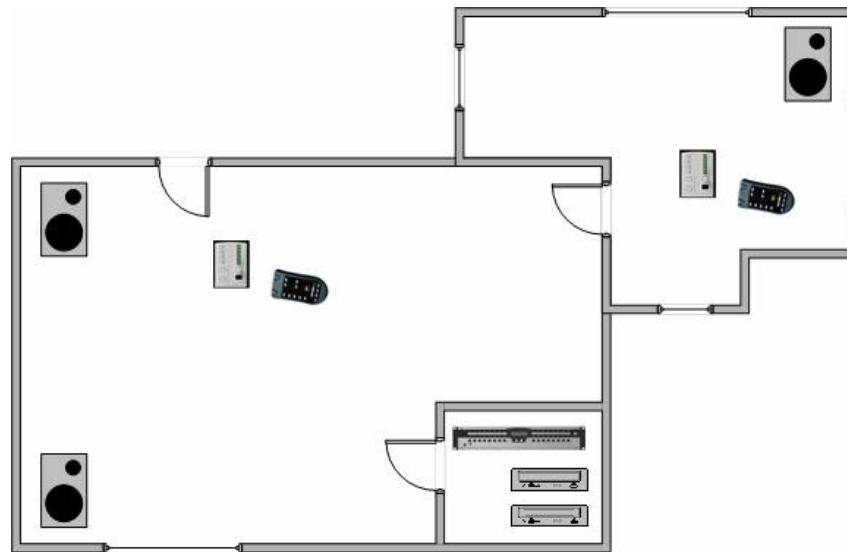


In three separate modules, we will build up a configuration (.CFG) program for an installation with two rooms – one with stereo audio and one with mono audio.

There are two stereo sources and each room will have remote control over source selection and level.



There are two sections in this module.

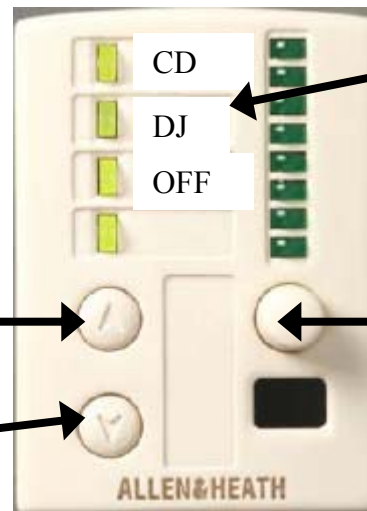
**1. Program the PL-4 01**

**2. Program the PL-5 01**

## 1. Program PL-4 01

We have two PL-4; one in zone 1 and one in zone 2.

The LEDs will light to indicate which source is routed.



Labels designed by installer or Customer. These are not supplied by Allen & Heath

Button #1 will be programmed to scroll through CD, DJ, & OFF.

The rotary will be programmed to control the level in the room.

Button #2 will be unused.

## 1.1 Program the source select button.

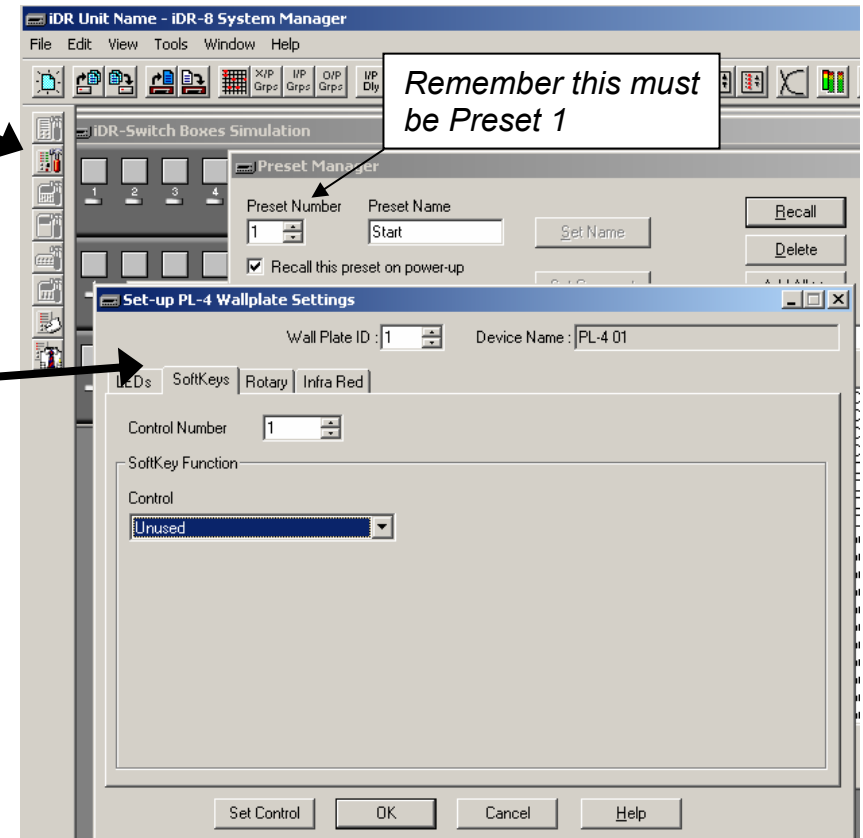
a. Open .CFG (configuration) 'module 2'

b. Recall preset 1.

Preset 1 is the power up preset. We need the PL-4 button #1 to be programmed so that it recalls presets 11, 12 & 10.

c. Open the PL-4 Wallplate Settings window.

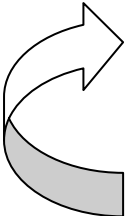
d. There are tabs here for programming the LEDs, Softkeys (all switches and buttons are referred to as Softkeys), Rotary and Infra Red. Infra Red is the PL-5. Select the Softkeys tab.




We will program switch 1(button) to scroll through the audio sources by having it recall the following preset each time it is pressed.

The first press in the power up preset will recall preset 11 and the CD will be routed to the room (zone 1). In preset 11 we program the switch to recall preset 12 so the DJ is routed.

In preset 12 we program the switch to recall preset 10 so no signal is routed and in preset 10 we program the switch to recall preset 11 – so causing a loop.



| <b>Preset</b>          | <b>Switch</b><br>(Control Number) | <b>Function</b>                            |
|------------------------|-----------------------------------|--|
| <b>1</b><br>(Power up) | <b>1</b>                          | <b>Recall preset 11. Routes CD.</b>        |
| <b>11</b>              | <b>1</b>                          | <b>Recall preset 12. Routes DJ.</b>        |
| <b>12</b>              | <b>1</b>                          | <b>Recall preset 10. No source routed.</b> |
| <b>10</b>              | <b>1</b>                          | <b>Recall preset 11. Routes CD</b>         |



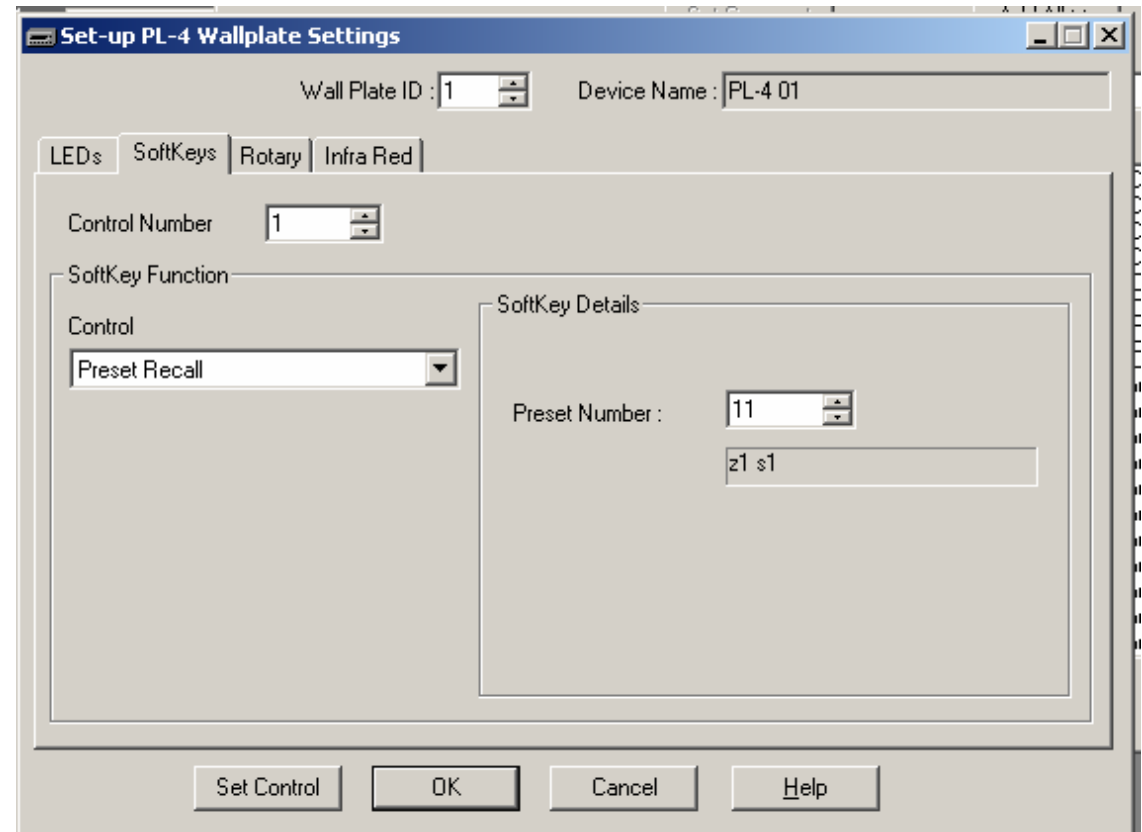
e. We have two PL-4 in our system. These are identified as Wall Plate ID 1 & 2. We are programming PL-4 01 which is ID 1.

f. Control Number 1 is switch 1.

g. Select the function as Preset Recall.

h. We want the first press of the button to recall preset 11 and route the CD to the room (zone 1).

i. Set Control but DO NOT press OK because we want to continue programming.

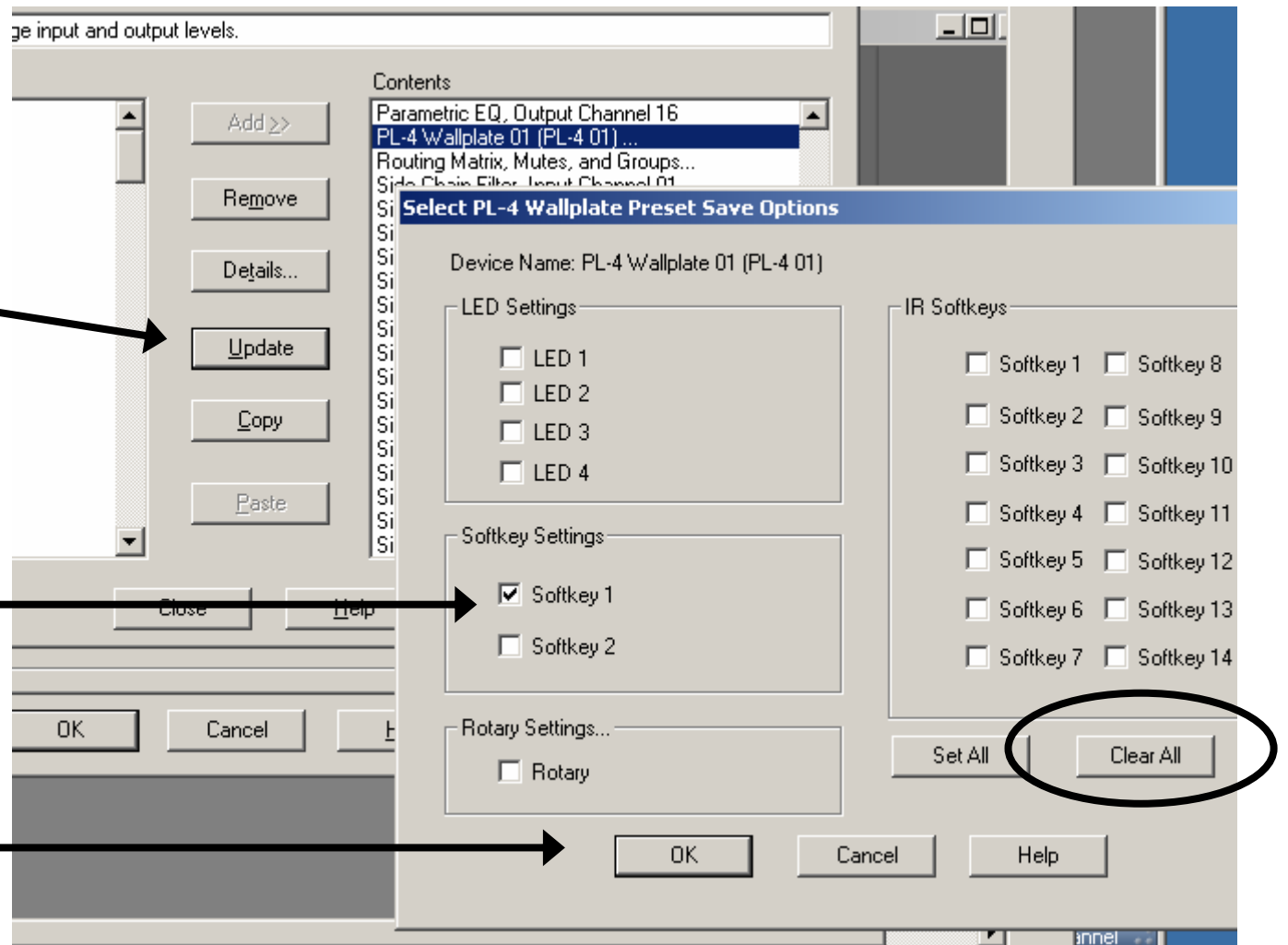


j. Now, in the preset Manager window we must highlight PL-4 01 in the Contents list and Update.

k. Clear All

l. Check Softkey 1 as this is the only control we are programming

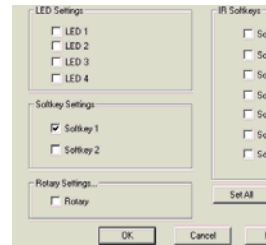
m. Click OK



n. Recall preset 11. Now we need to program switch 1 to recall preset 12.

o. Add PL-4 01 to the contents list.

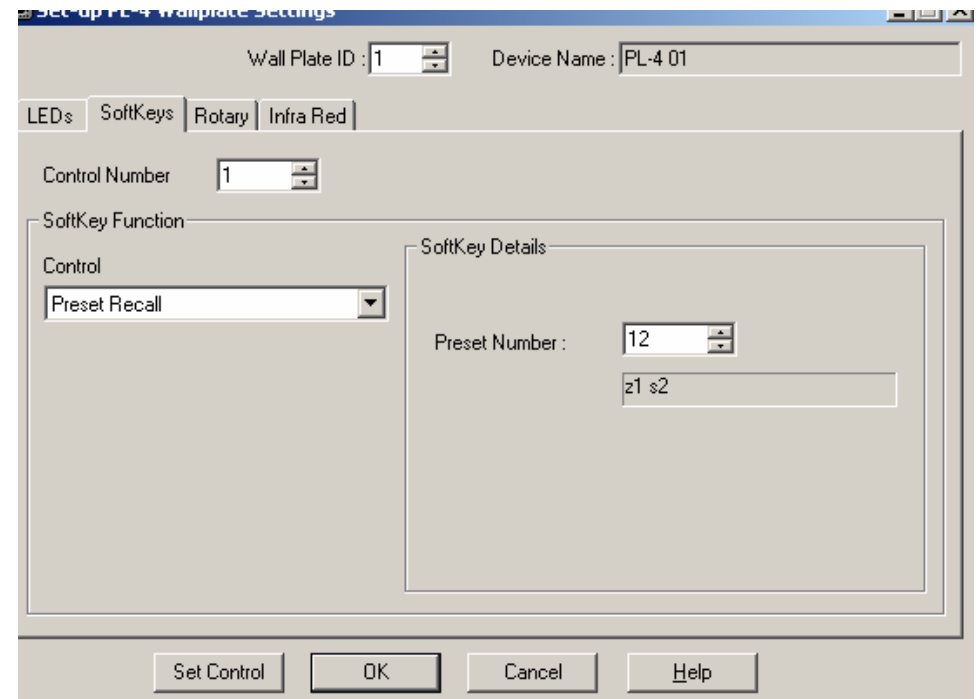
p. Select only Softkey 1. OK →



q. In the Wallplate Settings window, Select Preset Number 12.

r. Set Control (do not press OK).

s. Now Update PL-4 01 in the Preset Manager window.



The following steps complete the programming of switch 1:

- a. Recall preset 12
- b. Add PL-4 01
- c. In the Wallplate Settings window, select preset recall 10.
- d. Set Control (not OK)
- e. Update.
- f. Recall preset 10
- g. Add PL-4 01
- h. In the Wallplate Settings window, select preset recall 11.
- i. Set Control (not OK)
- j. Update.

Recall preset 1.

Open the PL-4 01 simulator and click button 1. You should see the presets sequence through: -

1  
11  
12  
10  
11  
12  
10 etc

☺ **Archive configuration**

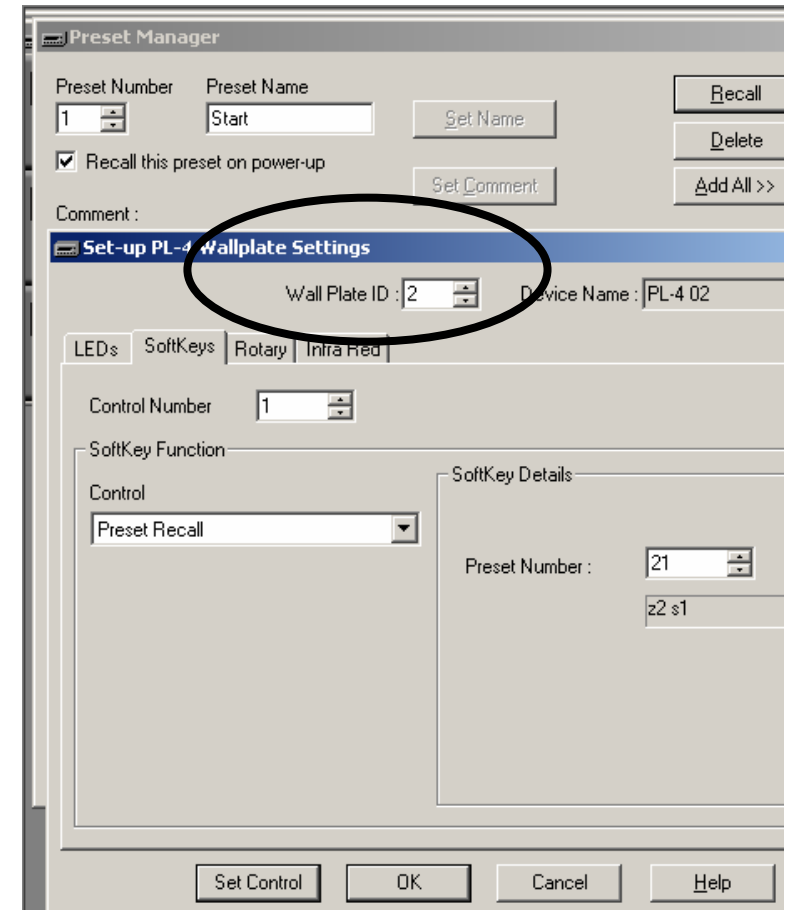


We now need to recall preset 1 and program switch #1 on PL-4 **02**.  
This will be programmed to scroll through presets:

1  
21  
22  
20

And back to 21 to complete the loop.

In the Wallplate Settings window, make sure ID 2 is selected.



When you have completed programming PL-4 02 switch 1,  
remember to **Archive configuration**.

## 1.2 Program the PL-4 rotary.

The rotary control on the PL-4 will be programmed as output level control. It will fulfil the same function in all presets so we only need to program it in the power up preset.

Wallplate ID 1  
Rotary

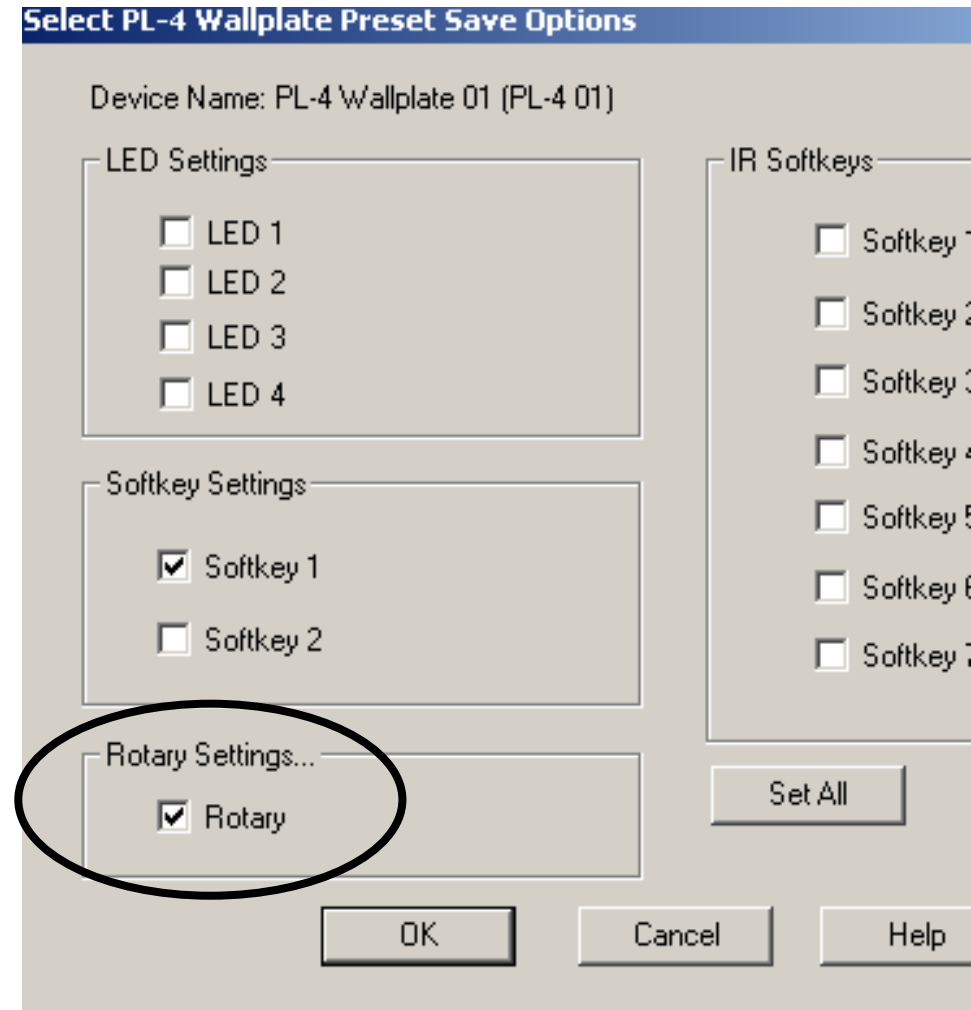
Output level

Set Control

The screenshot shows the 'Set-up PL-4 Wallplate Settings' dialog box. At the top, 'Wall Plate ID' is set to 1 and 'Device Name' is 'PL-4 01'. The 'Rotary' tab is active. Under 'Rotary Function', the 'Control' dropdown is set to 'O/P Level'. In the 'Rotary Details' section, 'Output Channel' is 1, 'Maximum Gain' is 5 dB, and 'Minimum Gain' is -59 dB. The 'Stereo' checkbox is checked. At the bottom, there are buttons for 'Set Control', 'OK', 'Cancel', and 'Help'.

Stereo o/p 1

Update PL-4 01 in preset 1 – select Rotary.



Select Wallplate ID 2 and program PL-4 02 rotary as output level control for o/p 3 (not stereo). Update PL-4 02 with the rotary selected in the update window.

Open both PL-4 simulators from the right side of your screen.

Arrange the screen so that you can see the simulators and the output channels window.



See the PL-4 rotaries control the output levels.

### ☺ *Archive configuration*

### 1.3 Program the PL-4 LEDs

We will program the PL-4 LEDs to indicate which source is selected. The LEDs will be set to light in each preset: -



Zone 1 Preset 11 LED 1 green



Preset 12 LED 2 green

Zone 2 Preset 21 LED 1 green

Preset 22 LED 2 green



Preset 10 LED 3 red

Preset 20 LED 3 red

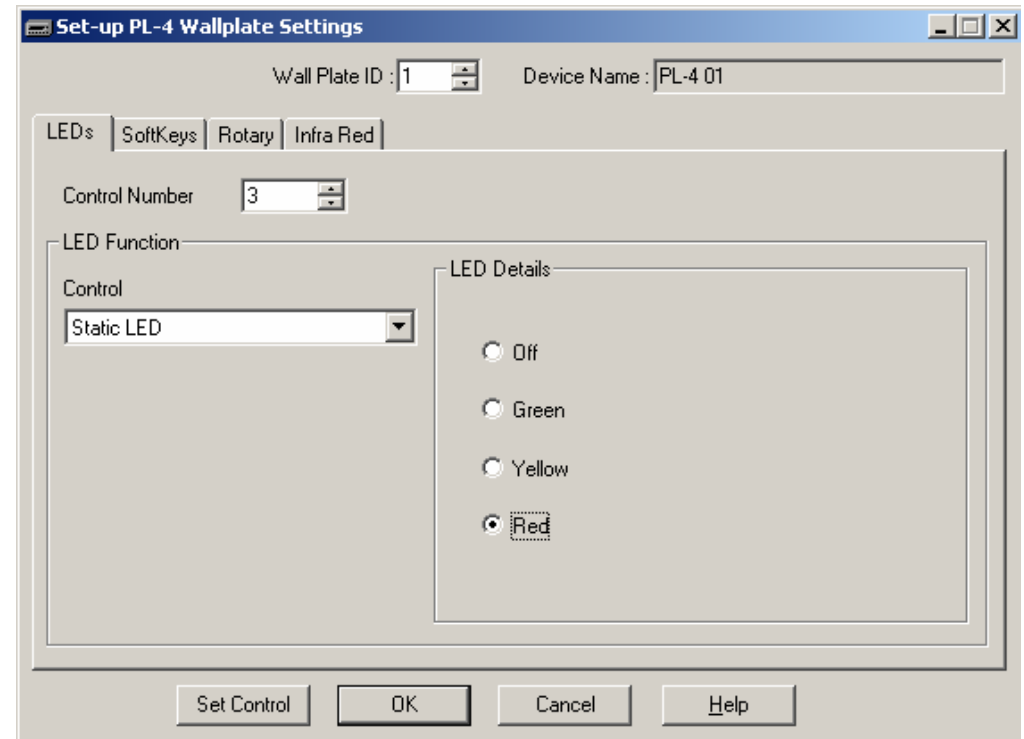
We will also set LED 3 as red OFF in the power up preset.

a. Select preset 1 in the Preset Manager window and Recall.

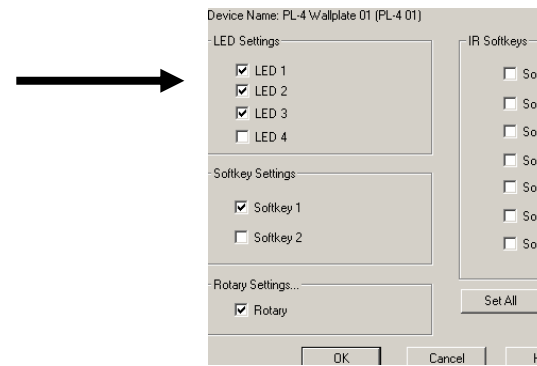
b. In the Wallplate Settings window select ID 1 (PL-4 01).

c. Select the LEDs tab.

d. Set Control 3 (LED 3) to static red.

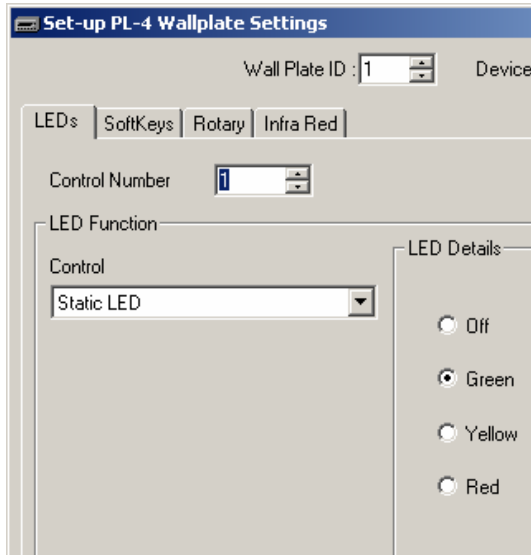


e. Set Control and update PL-4 01 LEDs 1, 2 & 3



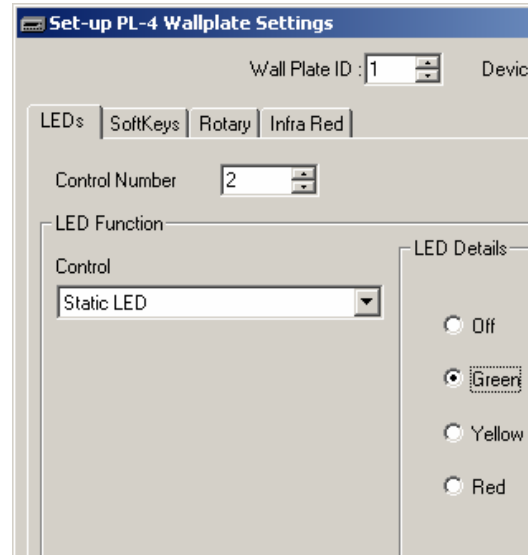
## Handy tips and screen shots to assist you with programming the LEDs

- ☺ Make sure that you **always Recall the preset to be worked in.**
- ☺ Check that you are working with the correct wallplate ID.
- ☺ Remember to turn LEDs OFF as well as ON.



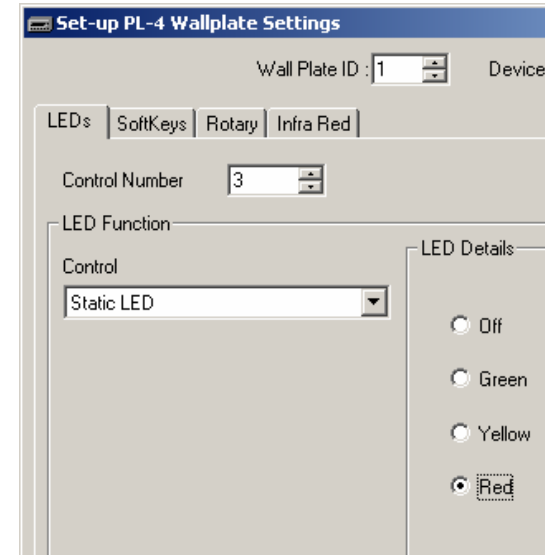
Preset 11 LED 3 Off / LED 1 green

Preset 21 LED 3 Off / LED 1 green



Preset 12 LED 1 Off / LED 2 green

Preset 22 LED 1 Off / LED 2 green



Preset 10 LED 2 Off / LED 3 red

Preset 20 LED 2 Off / LED 3 red

## 2. Programming the PL-5

The buttons on the PL-5 have default markings but have no function until programmed.

We will program the buttons as CD →

DJ →

OFF →



← Level UP / DOWN

We only need to program the PL-5 in preset 1 because all functions remain constant.



These are the PL-5 Infra Red Control Numbers numbers for programming in the Wallplate Settings window Infra red tab.

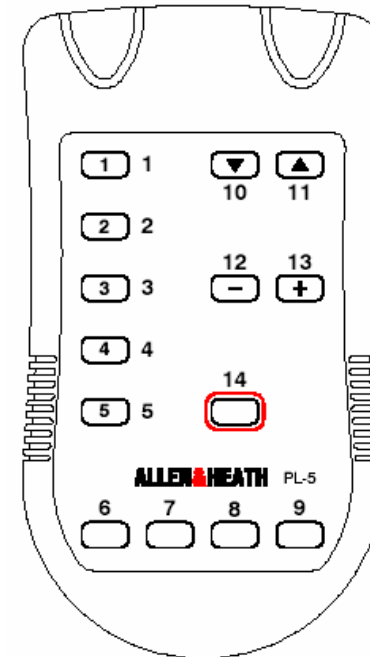
We will program the Infra Red controls (switches)

### **PL-5 01 (zone 1)**

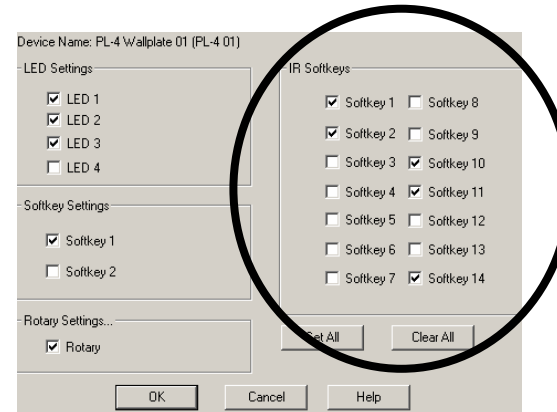
- 1 recall preset 11 CD
- 2 recall preset 12 DJ
- 10 level down o/p 1 stereo
- 11 level up o/p 1 stereo
- 14 recall preset 10

### **PL-5 02 (zone 2)**

- 1 recall preset 21 CD
- 2 recall preset 22 DJ
- 10 level down o/p 3
- 11 level up o/p 3
- 14 recall preset 20



Remember to select the IR softkeys when updating.



☺ **Archive configuration**

## Conclusion

Arrange your windows so that you can see the routing matrix and both PL-4 / 5 simulators.

When operating the simulators you should see the LEDs indicating the source selected and the routing matrix changing.