

PL- level control of a remote iDR

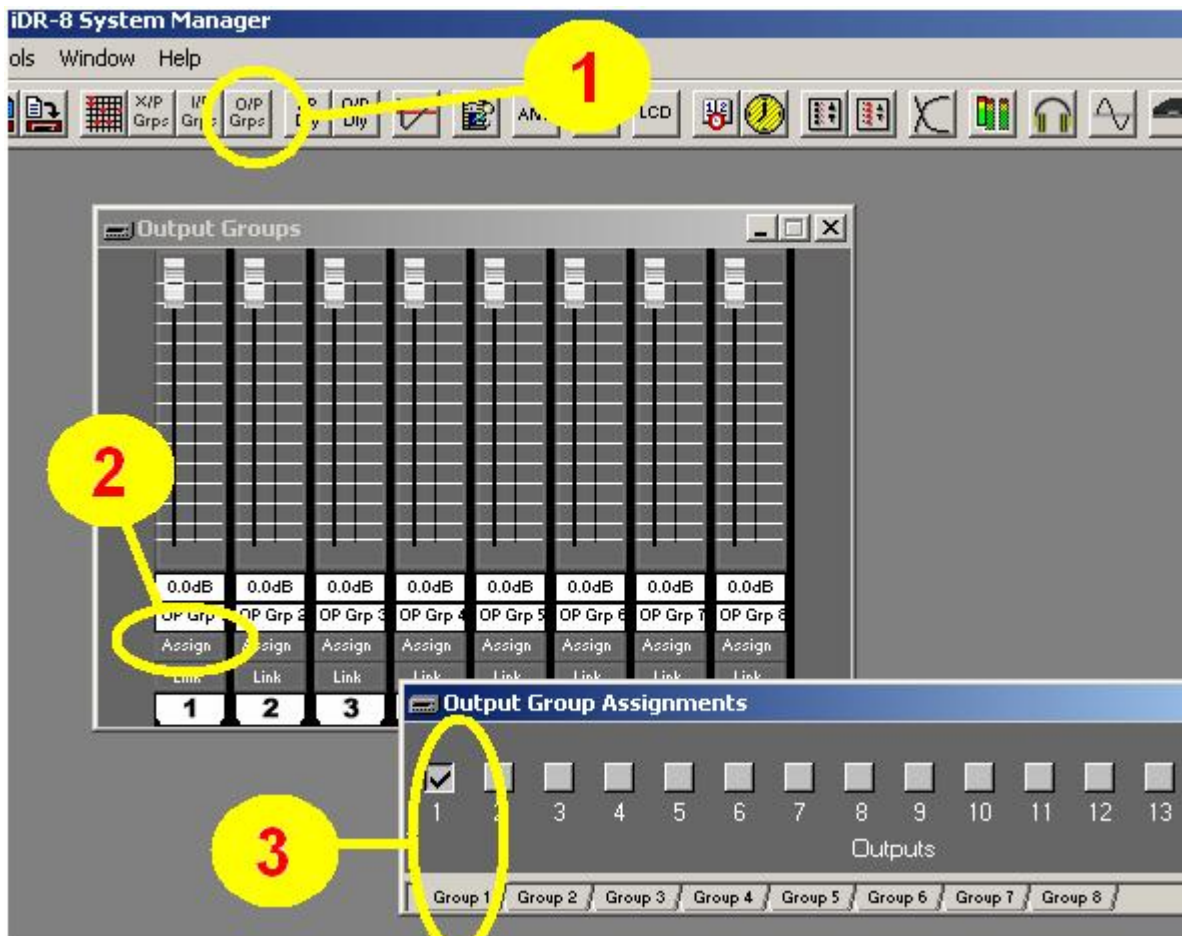
It is possible to use a PL device on a local iDR unit to control level and preset recall on a remote iDR unit. The two iDRs need to be connected on the same Ethernet network.

Here we will see how to achieve level control. The principle is that i/p and o/p groups can be linked across iDR units that are on a common network. We are going to assign an o/p channel to an o/p group on the local unit. Then we link to the remote unit and assign an o/p channel on the remote unit to the chosen o/p group.

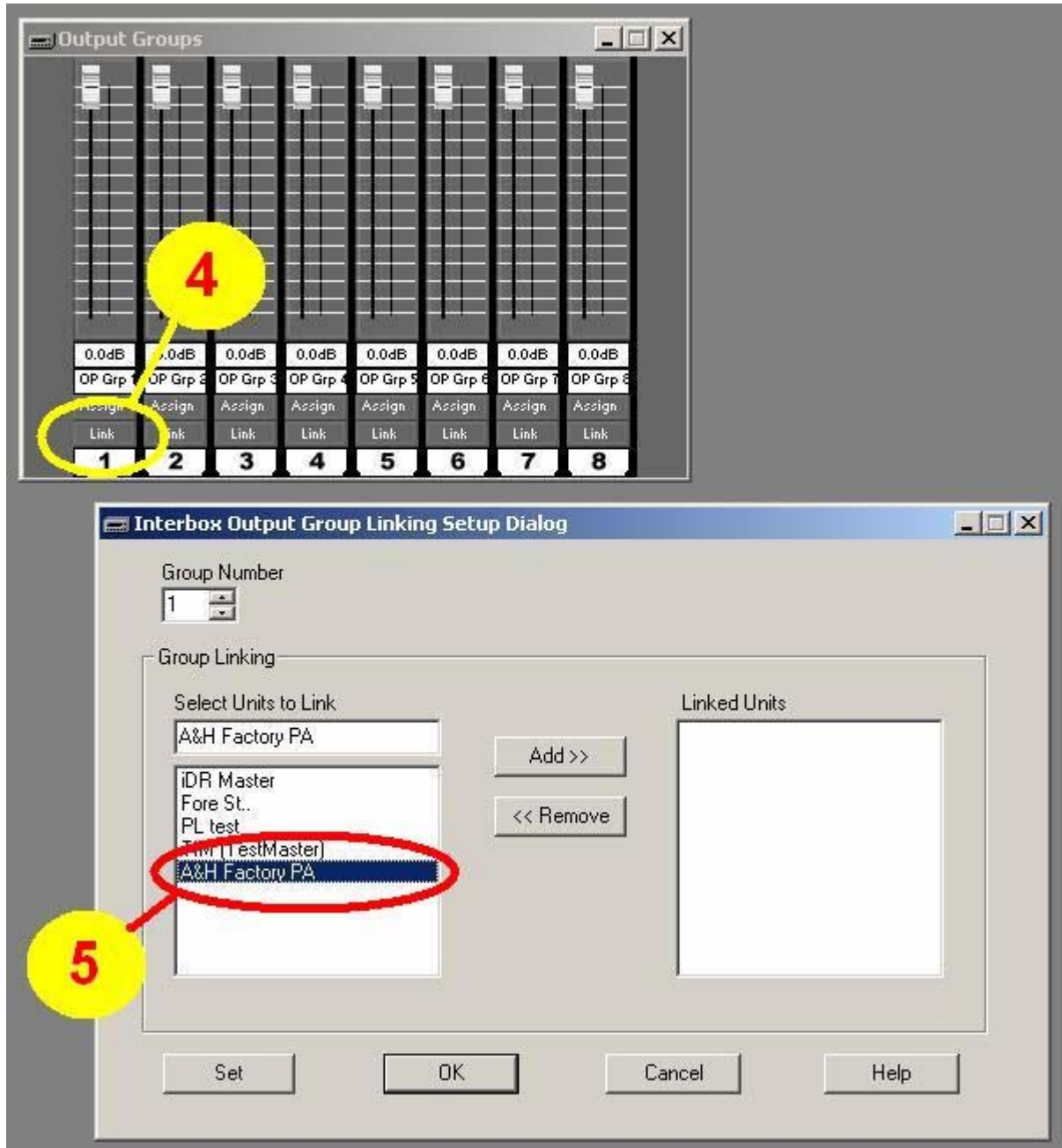
Finally assign a fader on the PL-6 (for example) to control that o/p group level.

On the local iDR

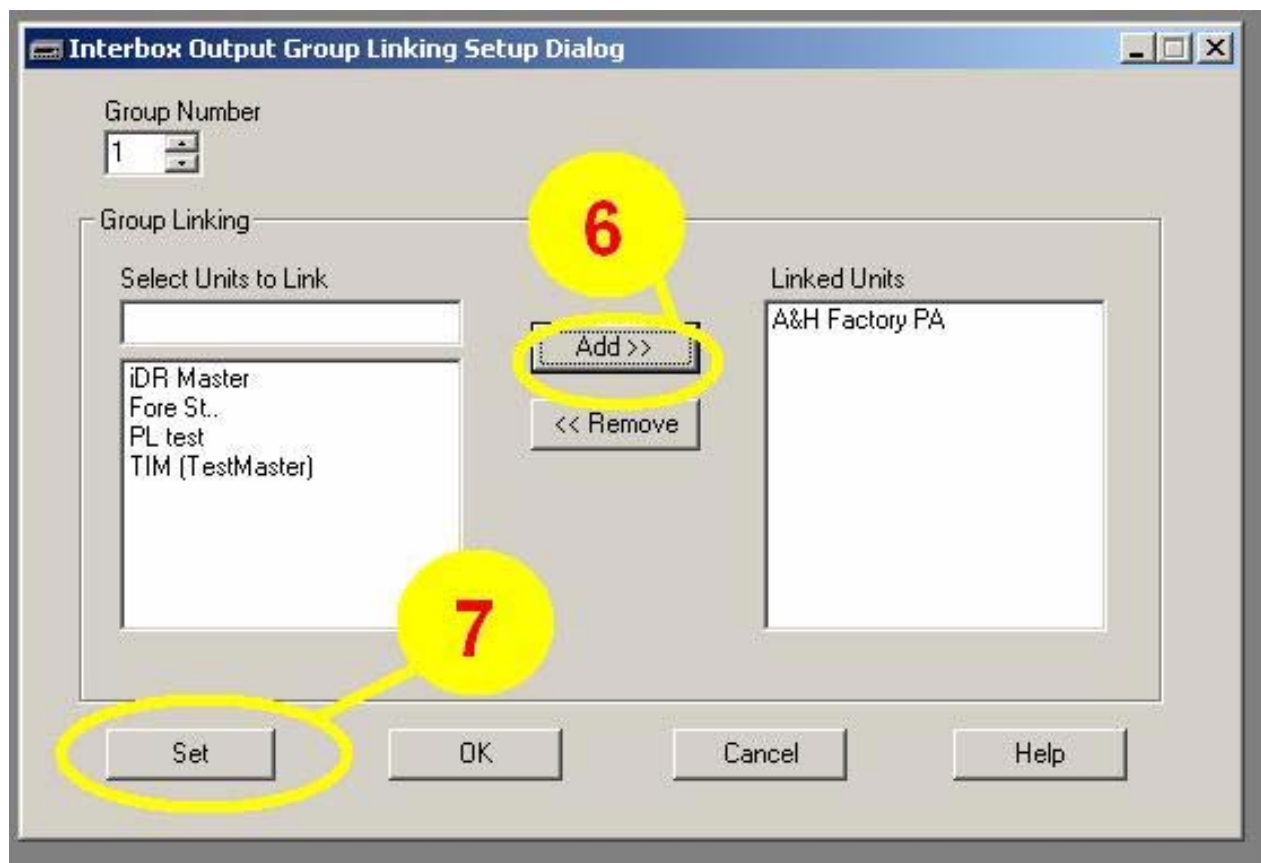
1. Select the Output Groups window
2. Click 'Assign'.
3. Assign to group 1.



4. Select 'Link'.
5. Choose an iDR from those on the network. The desired remote iDR has to be on the same network as the remote unit in order to appear in the select window.



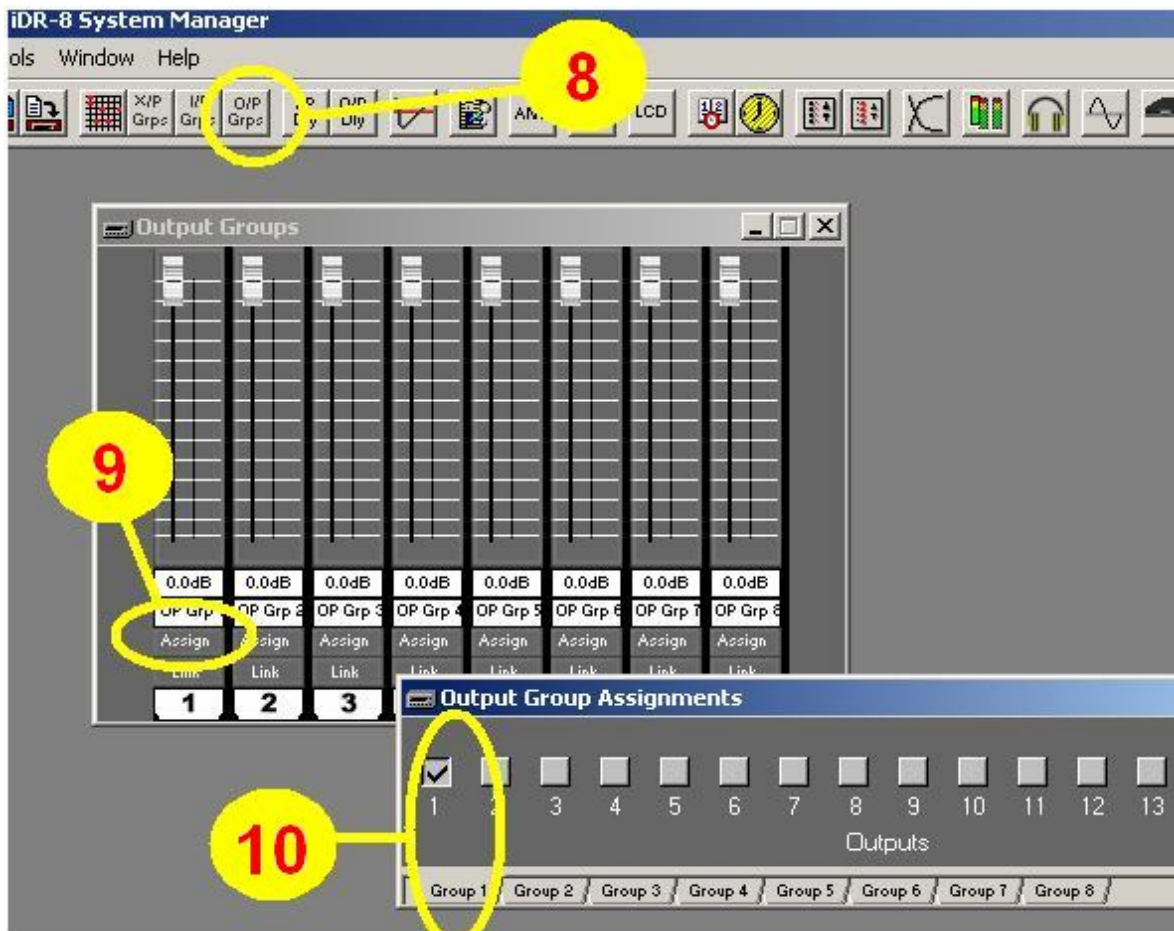
6. Add the remote iDR unit.
7. Click 'Set'.



Now you must UPDATE the Output Faders Mutes And Groups in the relevant preset(s).

On the remote iDR

8. Select 'Output Groups'.
9. Click on the 'Assign' button.
10. Assign the group.

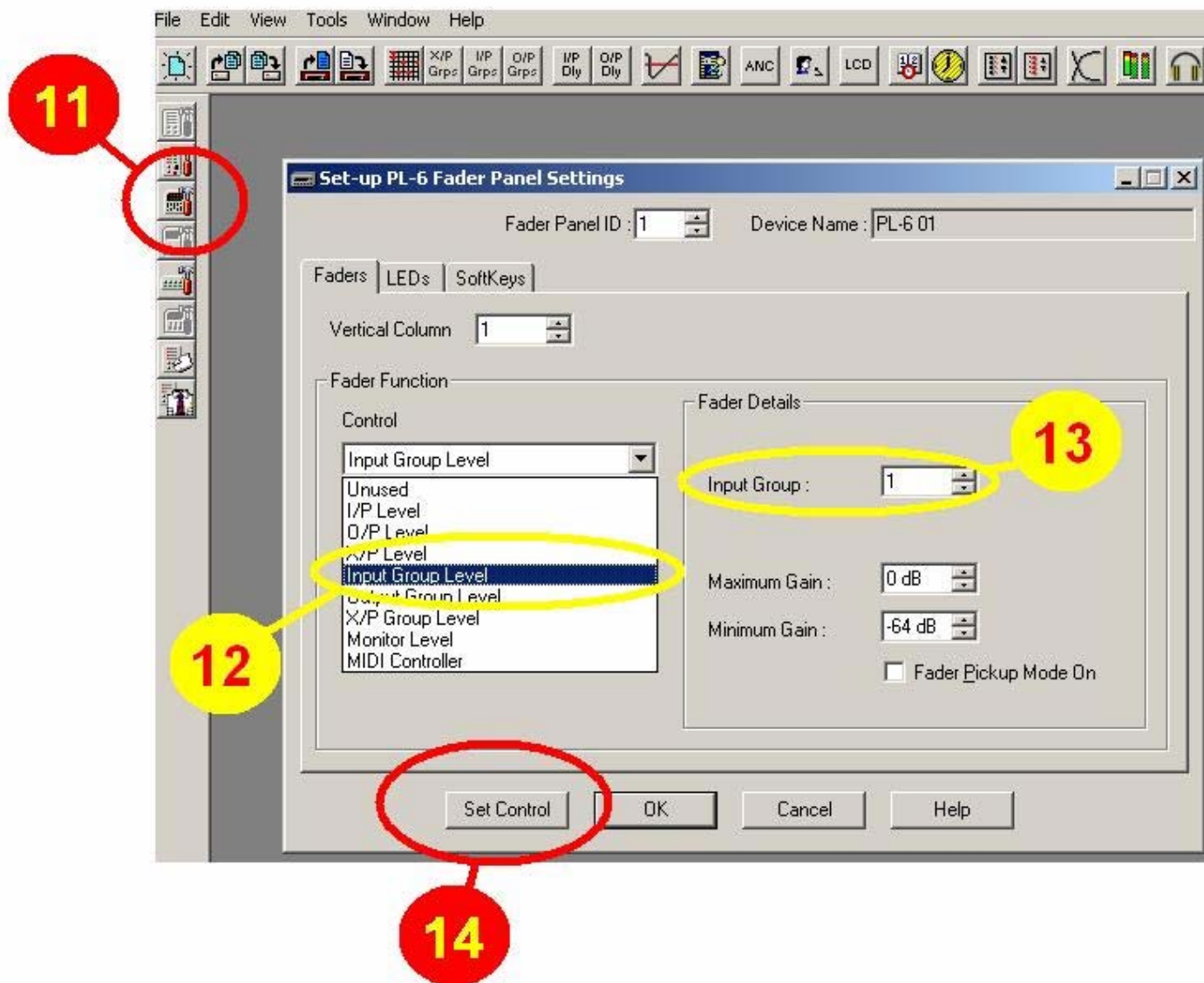


Moving the o/p fader 1 on the local unit now controls o/p group 1. With the two iDR units linked on the same network, the output group 1 on the remote unit follows that group on the local unit. We have the desired o/p channel on the remote unit assigned to the o/p group and it now mirrors the level of o/p channel 1 on the local unit. Now we assign a fader on a PL-6 (for example) connected to the local unit to simply control o/p group 1.

Now you must UPDATE the Output Faders Mutes And Groups in the relevant preset(s).

Program the PL-6 on the local iDR

11. Select the PL-6 setup window
12. Select the fader function
13. Choose the desired group
14. Set Control



Now you must UPDATE the PL-6 in the relevant preset(s).