

## The PL-Anet System

### Plug in remote control – connects direct to iDR via CAT5

The PL range of controllers offer myriad combinations of switches, rotary, fader, LCD, LED and direct interface to external switches, relays and alarm systems.

**Connection is direct** from the rear of the iDR with RJ45 IN OUT sockets on each PL device allowing a simple chain connection. A hub is available for branching and star connection.

Functions include: -

Source selection and signal routing.

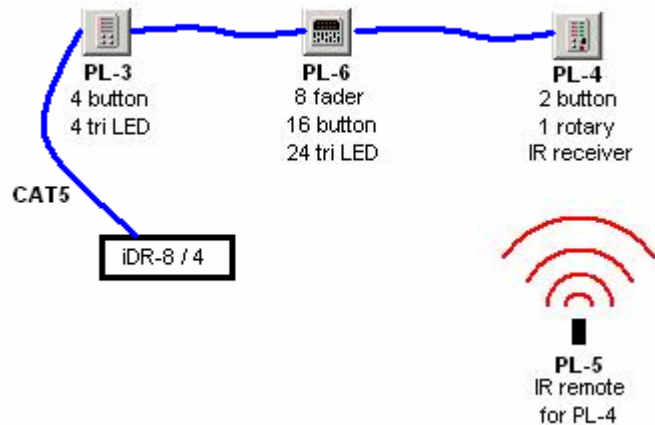
Level control.

Interface with external switches/relays.

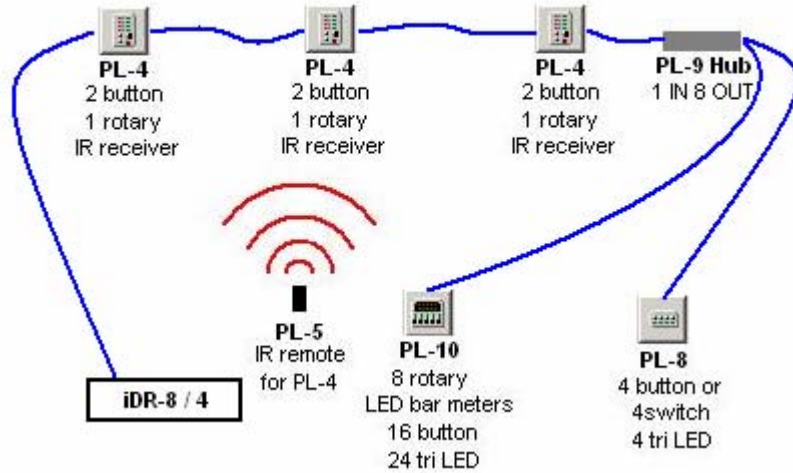
LCD and LED display.

### **Connection**

CAT5/RJ45 IN-OUT chain. The maximum number of PL devices and the maximum cable length can be calculated using a program included in the iDR System Manager software bundle. The drawing below shows a typical small setup.



Sometimes you will need to branch the PL system using the PL-9 hub. Note that the PL-Anet wiring has a 20VDC line and third party hubs cannot be used.



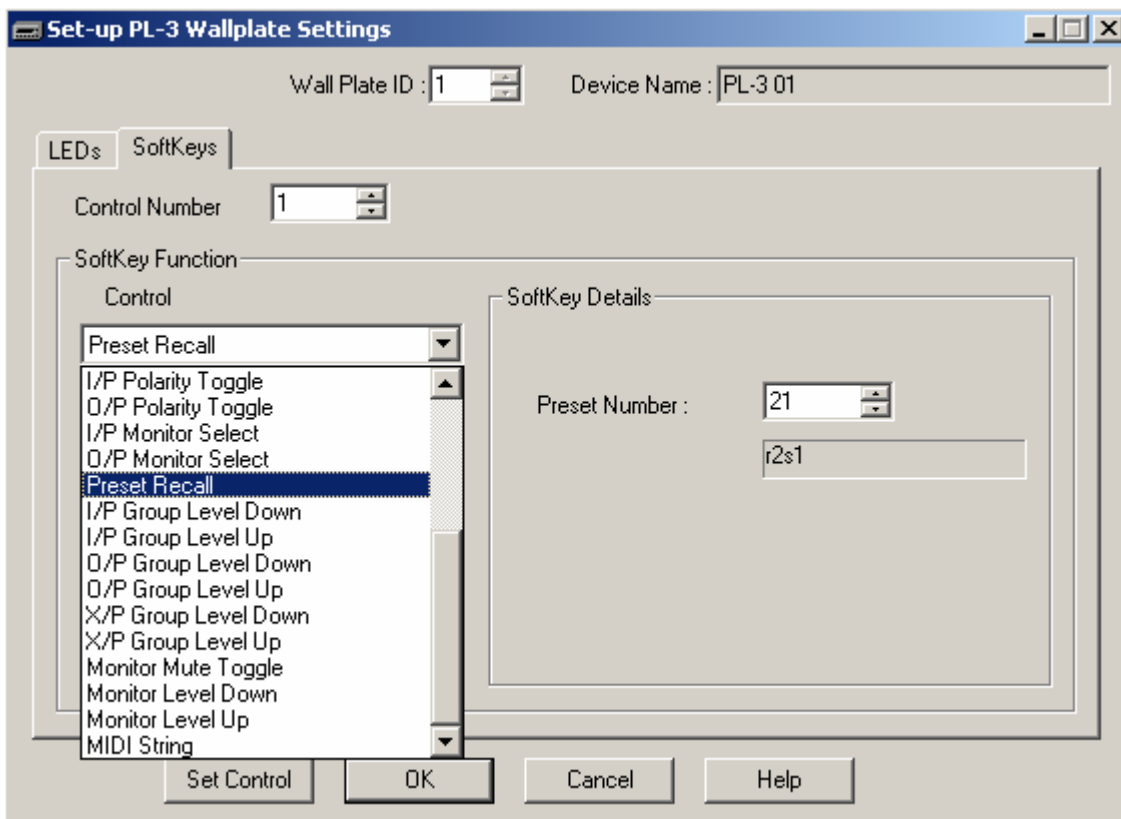
The PL-8 and PL-10 may be in different parts of a building or even in separate buildings.

Note that the PL-5 infra red sender can control all three PL-4s if they are in separate rooms.

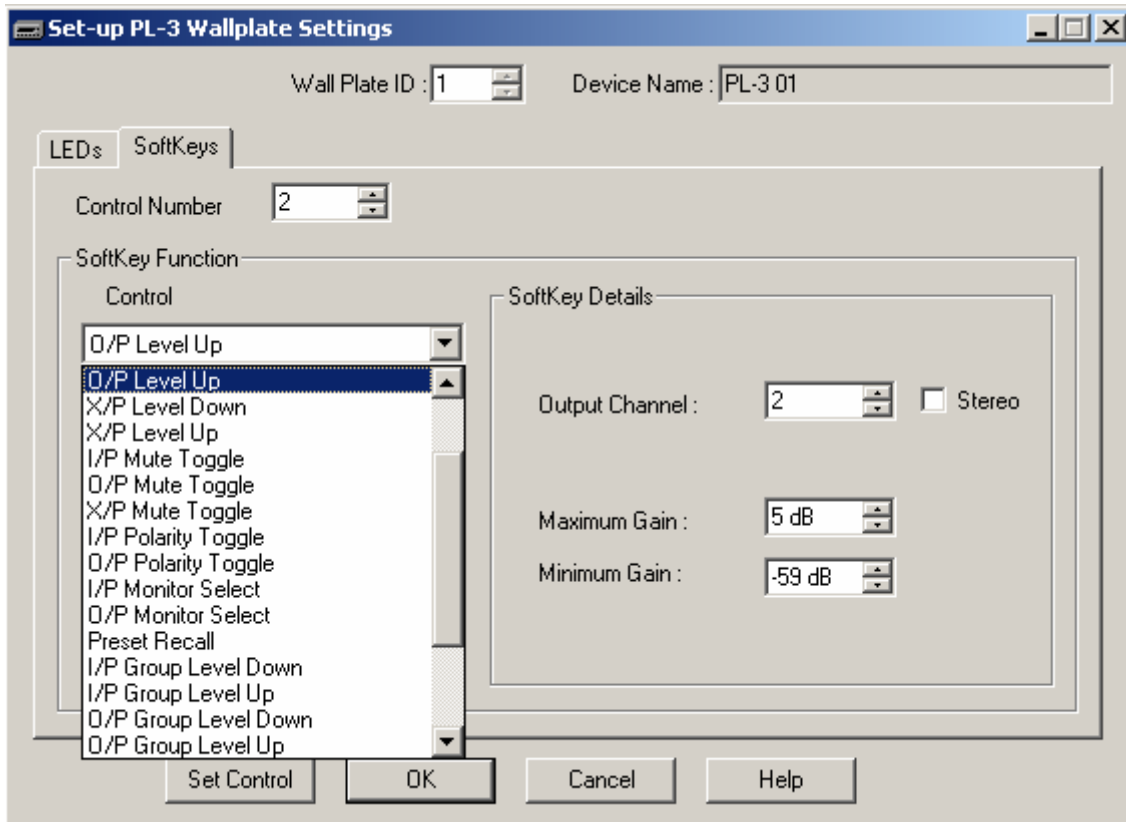
## Programming

Switches, LEDs, faders etc are easily programmed using drop down menus and check boxes. Here is a PL-3 programming window showing switch1 recalling presets to select sources, switch 2 as room level up and switch 4 as room level down (this is room 2 fed by output 2). The LEDs can be programmed as static colours in each preset to indicate which source is playing or mutes or meters.

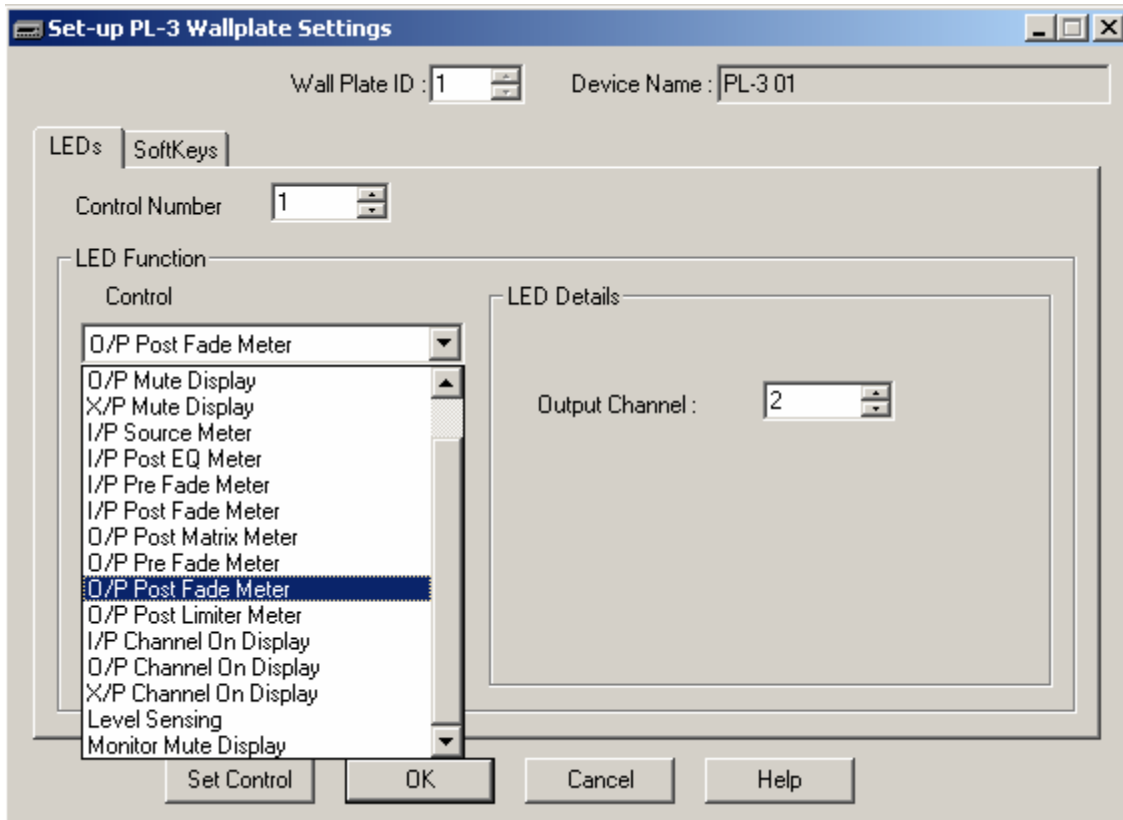
This is a simple Windows system.



**Button 1 Preset Recall**



**Button 2 level UP**



**LED 1 meter**