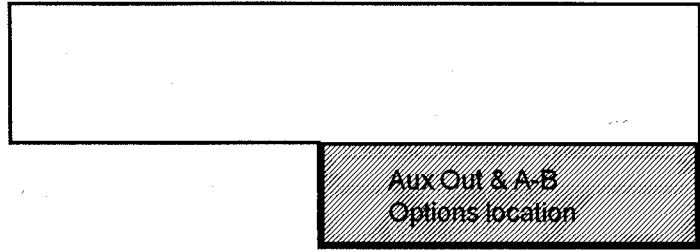


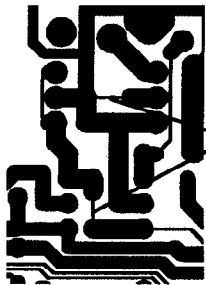
Aux Out and A-B Out Balance Option

These outputs are impedance balanced on TRS jacks to provide interference rejection when plugged into equipment with balanced inputs. If, however, you wish to fit the electronic balance option and also increase the output level to a nominal +4dBu, the rear connector circuit board assembly can be reconfigured. This involves cutting tracks and inserting SSM2142 8 pin dual in line balanced ICs.



Connector circuit board assembly
trackside view

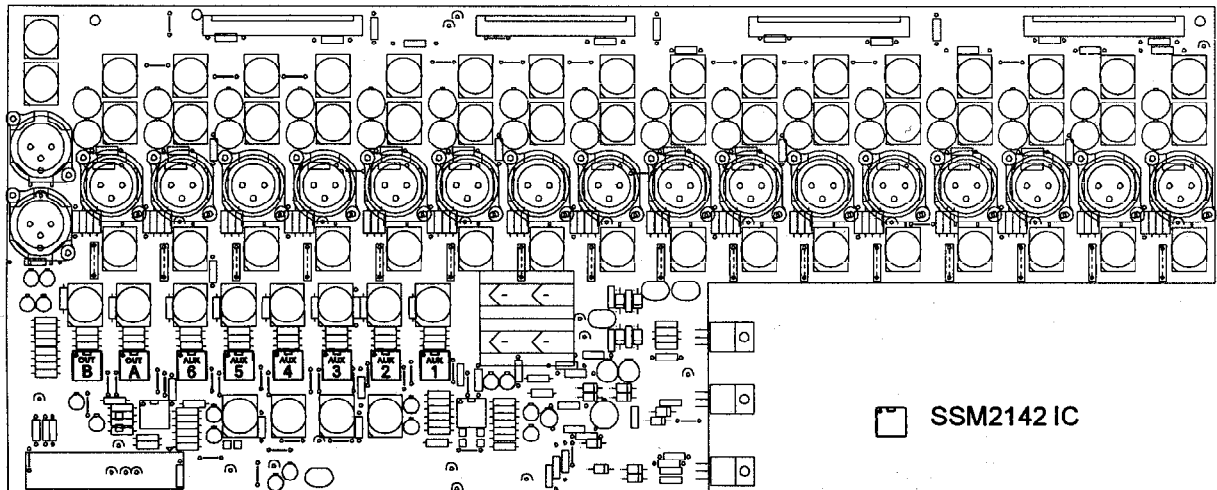
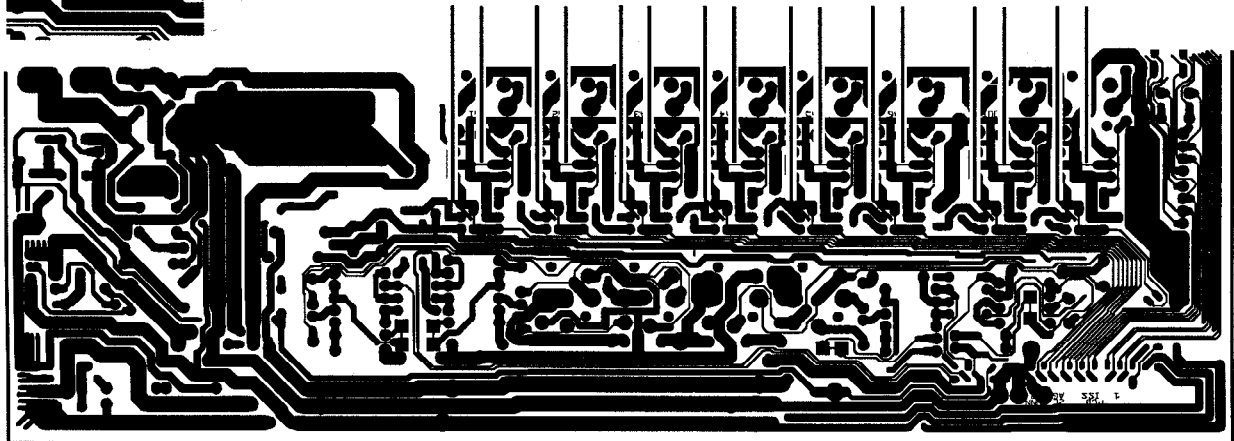
Before fitting the SSM2142 balanced driver ICs into the circuit board clear the component holes of solder. Then cut the tracks between pads as shown below.



Cut tracks
between
pads.

Cut tracks between pads when fitting SSM2142 IC.

AUX	AUX	AUX	AUX	AUX	AUX	OUT	OUT
1	2	3	4	5	6	A	B



□ SSM2142 IC

Connector circuit board assembly.
component side view