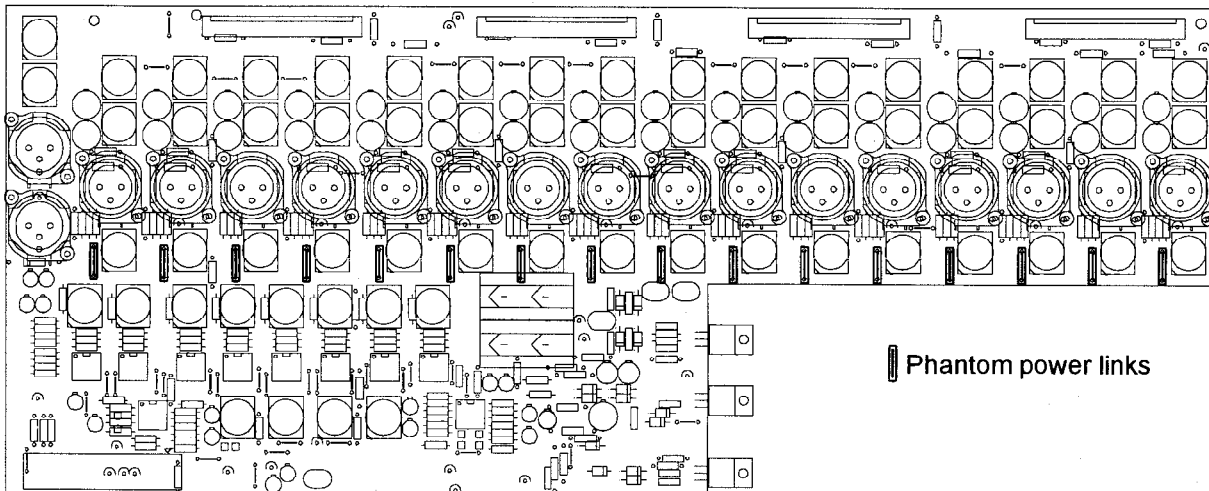


Phantom Power Disable

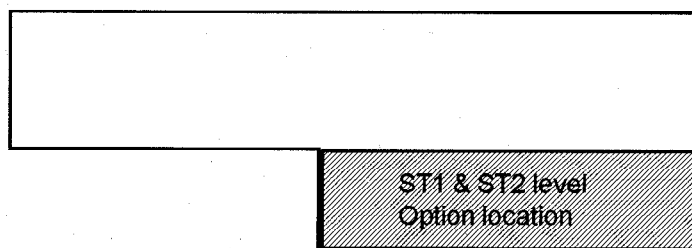
It is perfectly safe to connect non-phantom powered sources such as dynamic microphones to powered XLR sockets providing that balanced leads and sources are used. The +48V supply is current limited through 6.8k ohm resistors to each XLR to prevent damage. However, you can disable phantom power to selected channels by cutting out links on the rear connector circuit assembly.



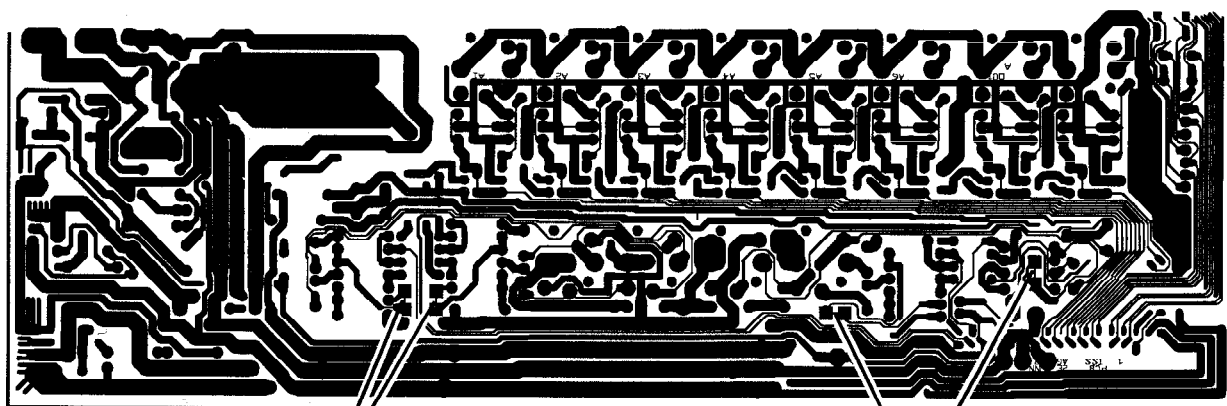
Connector circuit board assembly.
component side view

ST1, ST2 Input Sensitivity

The stereo return inputs are factory set for nominal low level -10dBV operation as is common with much of the external equipment available today. The ST1 and ST2 L-R level controls allow adjustment for varying input levels. Most outboard equipment also includes output level adjustment. If, however, you wish to change the sensitivity to high level +4dBu, the rear connector circuit board assembly can be reconfigured.



Connector circuit board assembly
trackside view



Cut tracks between square pads for +4dBu operating level on ST1.

Cut tracks between square pads for +4dBu operating level on ST2.