

ALLEN & HEATH

SOFTWARE RELEASE NOTES

**This is the current Microsoft Windows® PC system, ASIO compatible, Device Driver release for
XONE:23C**

Xone Product **XONE:23C**
 Device Drivers (PC) **2.9.65** [XONE_23C_Drivers_2.9.65]

Operating System	Compatible	Support Active
Windows®10	✓ (32 & 64Bit)	✓
Windows®8	✓ (32 & 64Bit)	✓
Windows®7	✓ (32 & 64Bit)	✓
Windows®Vista	✓ (32 & 64Bit)	✗
Windows®XP	✓ (32 & 64Bit)	✗

Details updated: 09/2018



Known Issues

XONEC-3 - Adjusting the Sample Rate / Buffer size in NI Traktor may occasionally cause the Driver to hang if buffer size is set to 64 samples.

XONEC-9 - If the USB lead is disconnected during operation occasionally the computer does not detect the XONE:23C hardware has been disconnected

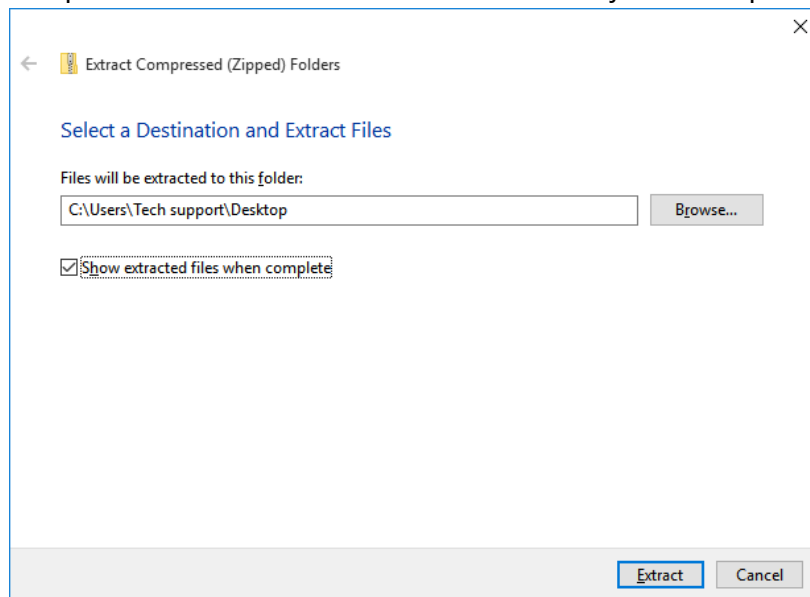
Please refer to page 2 for Device Driver installation instructions

Driver Installation Instructions

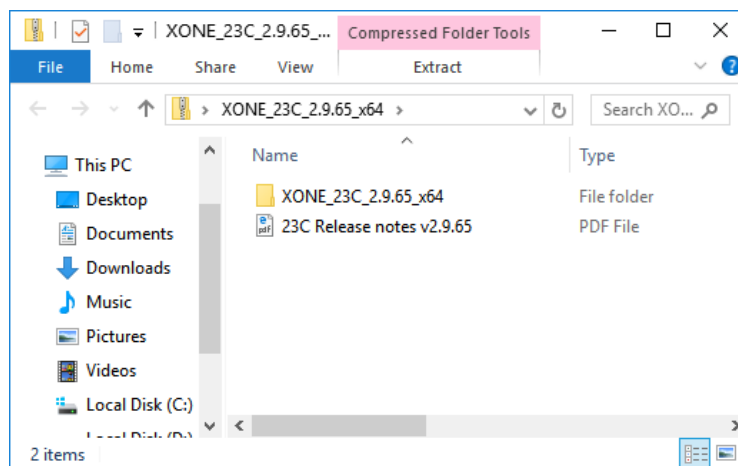
Visit the Allen & heath website for latest drivers:

www.allen-heath.com/xone23C

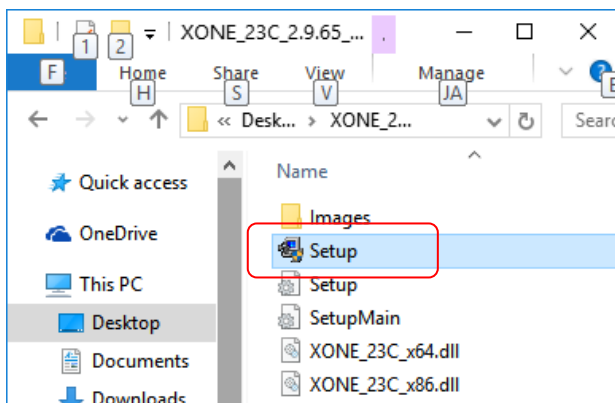
1. Download the file: XONE_23C_Windows_Drivers_2.9.65.zip
2. Open the .zip compressed file and 'Extract all' files into a folder your desktop



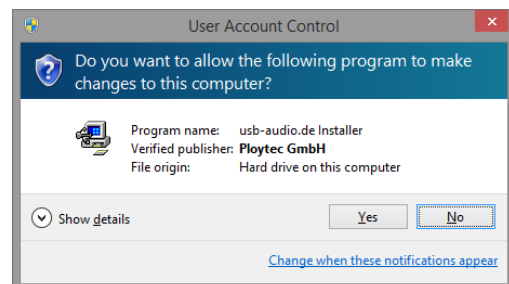
3. Press the 'Extract' button
4. Open the folder XONE_23C_Drivers_2.9.65



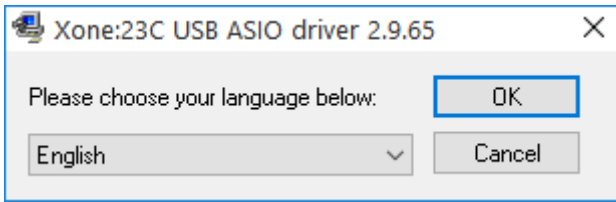
5. Double-click on: Setup.exe



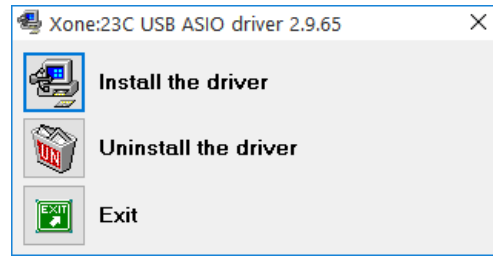
6. Click Yes when prompted



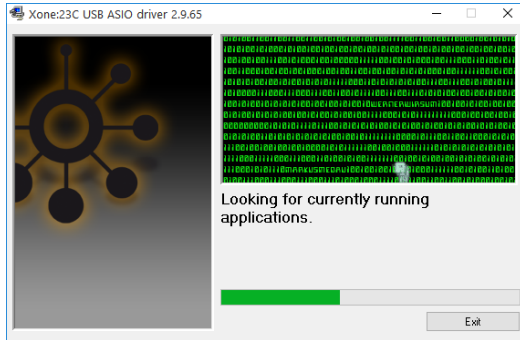
7. Follow the onscreen instructions



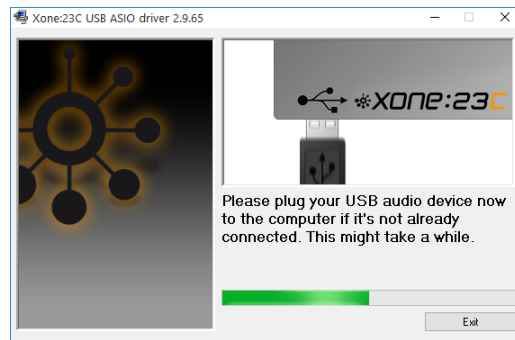
8. Follow the onscreen instructions



9. A series of messages is displayed during installation...

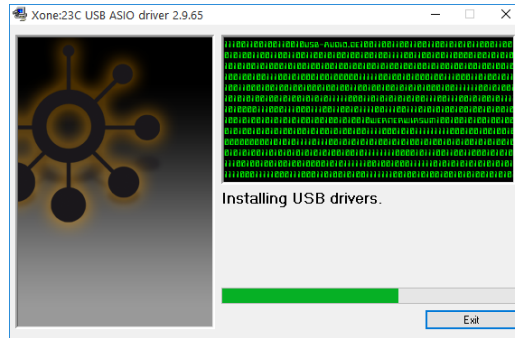
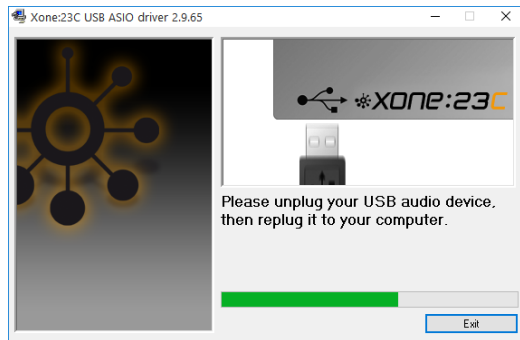


10.

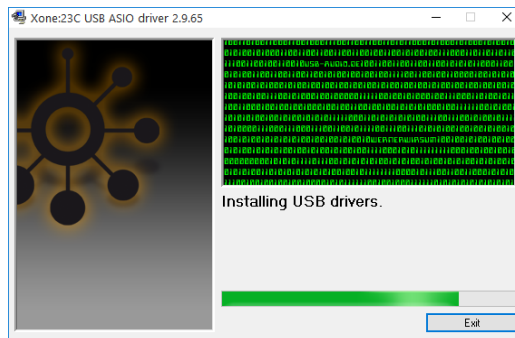
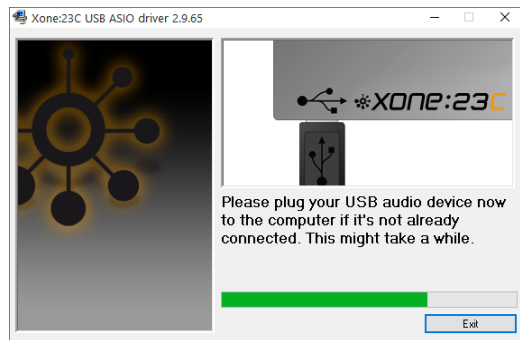


Follow the onscreen instructions

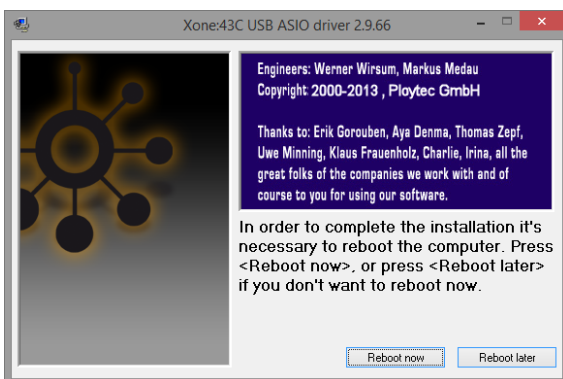
Follow the onscreen instructions



11. Follow the onscreen instructions



11. Installation complete



NOTE:

After completing the driver installation, *restart* your computer

If you experience any problems, please contact A&H Product Support: <http://support.allen-heath.com>