

ALLEN & HEATH

SOFTWARE RELEASE NOTES

**This is the current Microsoft Windows® PC system, ASIO compatible, Device Driver release for
XONE:43C**

Xone Product **XONE:43C**
 Device Drivers (PC) **2.9.66** [XONE_43C_Drivers_2.9.66]

Operating System	Compatible	Support Active	
Windows®10	✓ (32 & 64Bit)	✓	Details updated: 09/2018
Windows®8	✓ (32 & 64Bit)	✓	
Windows®7	✓ (32 & 64Bit)	✓	
Windows®Vista	✓ (32 & 64Bit)	✗	
Windows®XP	✓ (32 & 64Bit)	✗	



Known Issues
 FOURTHREEC-5 - Win7/Win8 If a small buffer size is selected and sample rate is changed when running Traktor the driver may sometimes hang.

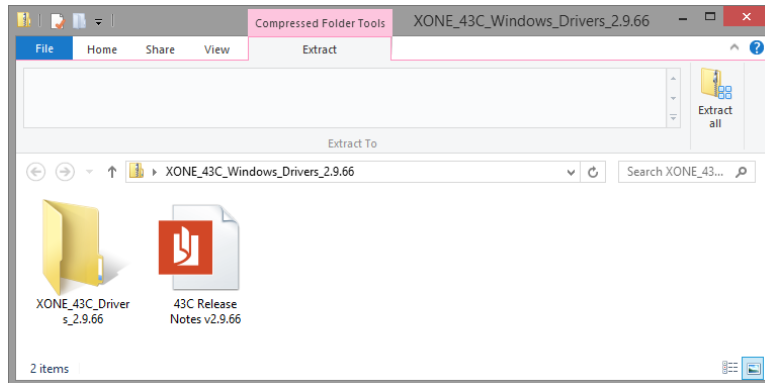
Please refer to page 2 for Device Driver installation instructions

Driver Installation Instructions

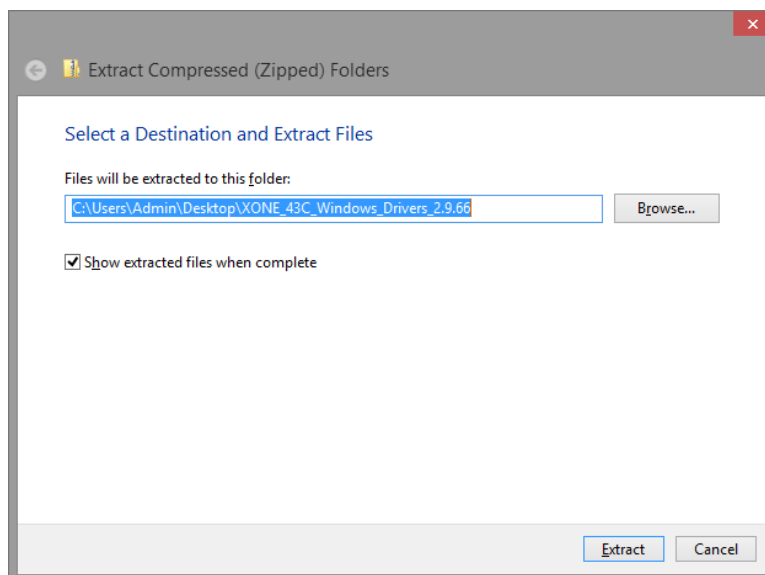
Visit the Allen & heath website for latest drivers:

www.allen-heath.com/xone43C

1. Download the file: XONE_43C_Windows_Drivers_2.9.66.zip

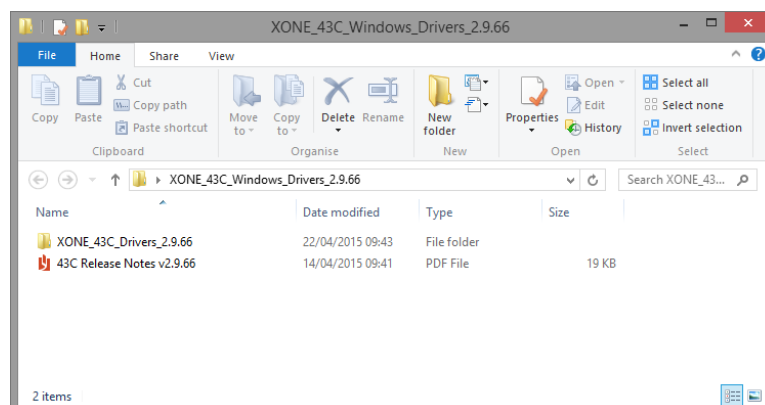


2. Open the .zip compressed file and 'Extract all' files into a folder your desktop

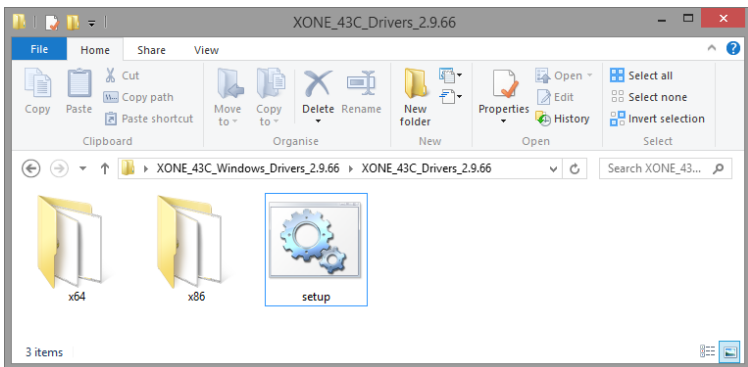


Press the 'Extract' button

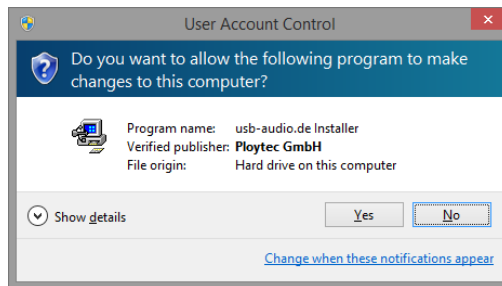
Open the folder XONE_43C_Drivers_2.9.66



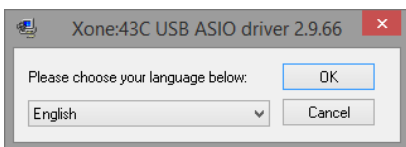
Open: Setup.cfg



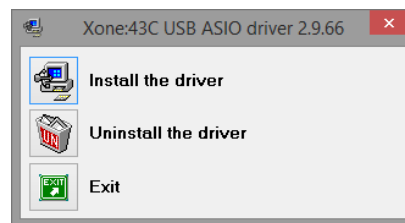
6. Click Yes



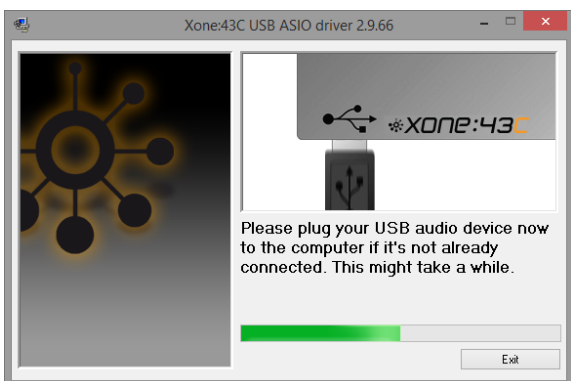
Follow the onscreen instructions



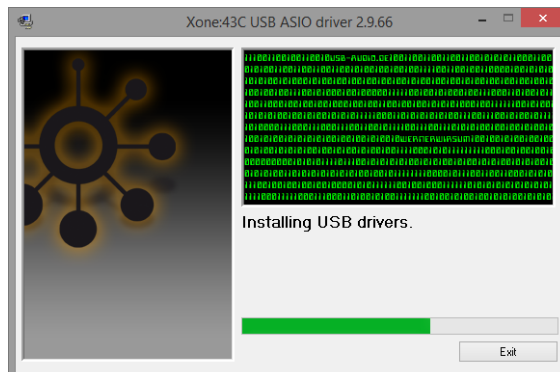
8. Follow the onscreen instructions



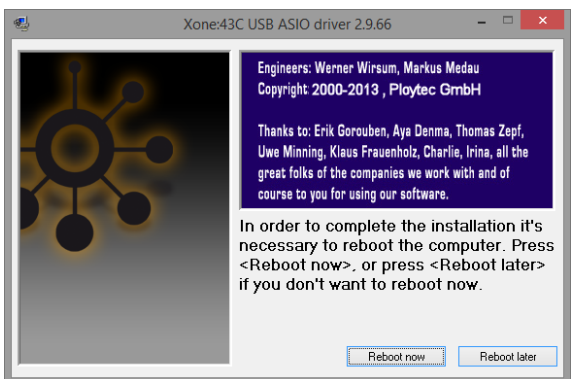
9. Follow the onscreen instructions



10. Follow the onscreen instructions



11. Follow the onscreen instructions



Installation complete

If you experience any problems, please contact A&H Product Support: <http://support.allen-heath.com>