

1. DIMS: 101
2. DIMS: 101



3. DIMS: 101
4. DIMS: 101



ALLEN&HEATH

Alcock Technical Centre,
Penny, Cornwall,
England, TR26 3LL
Tel: +44 (0)1524 372930
Fax: +44 (0)1524 371163

ISSUE NO.	DATE	BY
1	27.02.88	
2	26.08.88	
3	09.09.88	
4	12.09.88	

FILE: DIMS: 3.dims

All parts to be built complete

TITLE: XB-10 MONO INPUT
PAGE:

DRG No: C8205 ISSUE: 3 SHEET: 0 OF 2

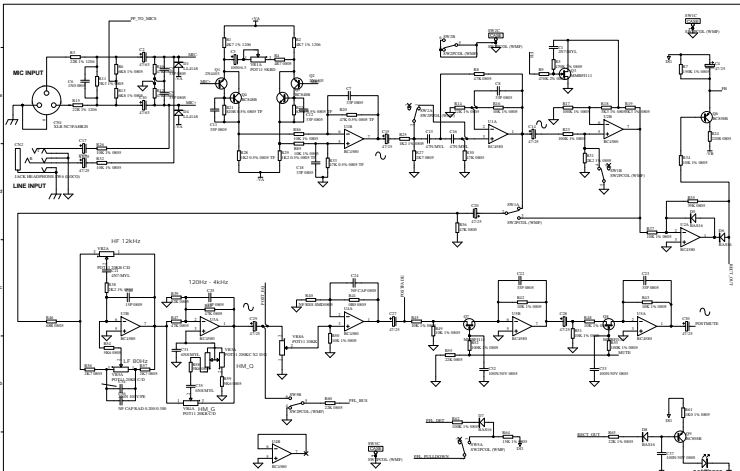
PROTECT

1:10:00 1:10:00

DRG No: C8205

ISSUE: 3 SHEET: 0 OF 2

11



ALLEN & HEATH

15014
 15015
 15016
 15017
 15018
 15019
 15020
 15021
 15022
 15023
 15024
 15025
 15026
 15027
 15028
 15029
 15030
 15031
 15032
 15033
 15034
 15035
 15036
 15037
 15038
 15039
 15040
 15041
 15042
 15043
 15044
 15045
 15046
 15047
 15048
 15049
 15050
 15051
 15052
 15053
 15054
 15055
 15056
 15057
 15058
 15059
 15060
 15061
 15062
 15063
 15064
 15065
 15066
 15067
 15068
 15069
 15070
 15071
 15072
 15073
 15074
 15075
 15076
 15077
 15078
 15079
 15080
 15081
 15082
 15083
 15084
 15085
 15086
 15087
 15088
 15089
 15090
 15091
 15092
 15093
 15094
 15095
 15096
 15097
 15098
 15099
 15100
 15101
 15102
 15103
 15104
 15105
 15106
 15107
 15108
 15109
 15110
 15111
 15112
 15113
 15114
 15115
 15116
 15117
 15118
 15119
 15120
 15121
 15122
 15123
 15124
 15125
 15126
 15127
 15128
 15129
 15130
 15131
 15132
 15133
 15134
 15135
 15136
 15137
 15138
 15139
 15140
 15141
 15142
 15143
 15144
 15145
 15146
 15147
 15148
 15149
 15150
 15151
 15152
 15153
 15154
 15155
 15156
 15157
 15158
 15159
 15160
 15161
 15162
 15163
 15164
 15165
 15166
 15167
 15168
 15169
 15170
 15171
 15172
 15173
 15174
 15175
 15176
 15177
 15178
 15179
 15180
 15181
 15182
 15183
 15184
 15185
 15186
 15187
 15188
 15189
 15190
 15191
 15192
 15193
 15194
 15195
 15196
 15197
 15198
 15199
 15200

REV	NO	DATE	BY
1	1	12-12-68	...
2	2	12-12-68	...

REV	NO	DATE	BY
1	1	12-12-68	...
2	2	12-12-68	...

REV	NO	DATE	BY
1	1	12-12-68	...
2	2	12-12-68	...

REV	NO	DATE	BY
1	1	12-12-68	...
2	2	12-12-68	...

REV	NO	DATE	BY
1	1	12-12-68	...
2	2	12-12-68	...

REV	NO	DATE	BY
1	1	12-12-68	...
2	2	12-12-68	...

REV	NO	DATE	BY
1	1	12-12-68	...
2	2	12-12-68	...

REV	NO	DATE	BY
1	1	12-12-68	...
2	2	12-12-68	...

REV	NO	DATE	BY
1	1	12-12-68	...
2	2	12-12-68	...

REV	NO	DATE	BY
1	1	12-12-68	...
2	2	12-12-68	...

REV	NO	DATE	BY
1	1	12-12-68	...
2	2	12-12-68	...

TITLE: XB-10 MONO INPUT

PAGE:

All parts to be Buiss Compliance

DRG No: CB205 ISSUE: 3 SHEET: 1 OF 2

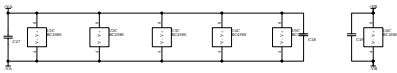
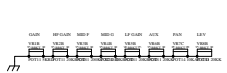
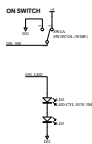
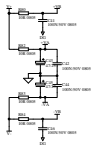
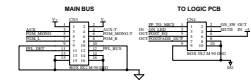
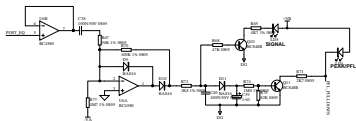
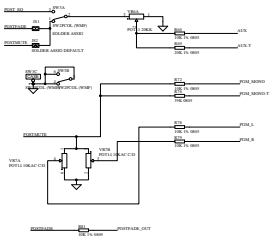
FILE: CB205_3P1.dwg

PRINTED:

12/21/68

15014

15015



ALLEN&HEATH
 400000 (Incorporated in England)
 Pleshy, Chesham
 England TW20 5LL
 Tel: +44 (0)1563 372030
 Fax: +44 (0)1563 376163

REV	DATE	BY
1	7.2.82	110
1.1	8.8.82	110
2	12.8.82	110
3	12.8.82	110

FILE: 08266 JPN (08/26)

PROFIT: 15/01/87 110/0000

DATE: 15/01/87

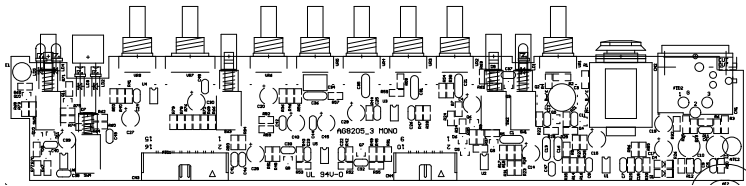
DESIGNER: 110

DRG No: CB205

ISSUE: 3

SHEET: 2 OF 2

TITLE: XB-10 MONO INPUT
 PAGE:
 All parts to be BuSIS Compliant



Designator	Description	A&H PART
	XB10_004_318 AG8205_3 MONO_	
C1	CAPACITOR MYLAR 2N7 100V 10% (AF0582)	AF0582
C2	CAPACITOR ELECTROLYTIC 47uF 63V (AF0217)	AF0217
C3	CAPACITOR ELECTROLYTIC 1000uF 6.3V (AF8123)	AF8123
C4	CAPACITOR ELECTROLYTIC 47uF 25V (AF0208)	AF0208
C5	CAPACITOR CERAMIC SMD0805 33P (AF4887)	AF4887
C6	CAPACITOR CERAMIC SMD0805 1N0 (AF5040)	AF5040
C7	CAPACITOR CERAMIC SMD0805 33P (AF4887)	AF4887
C8	CAPACITOR CERAMIC SMD0805 33P (AF4887)	AF4887
C9	CAPACITOR CERAMIC SMD0805 33P (AF4887)	AF4887
C10	CAPACITOR ELECTROLYTIC 47uF 63V (AF0217)	AF0217
C11	CAPACITOR CERAMIC SMD0805 33P (AF4887)	AF4887
C12	CAPACITOR CERAMIC SMD0805 33P (AF4887)	AF4887
C13	CAPACITOR MYLAR 47NF 100V 10% (AF0156)	AF0156
C14	CAPACITOR ELECTROLYTIC 47uF 25V (AF0208)	AF0208
C15	CAPACITOR ELECTROLYTIC 47uF 25V (AF0208)	AF0208
C16	CAPACITOR MYLAR 47NF 100V 10% (AF0156)	AF0156
C17	CAPACITOR ELECTROLYTIC 47uF 25V (AF0208)	AF0208
C18	CAPACITOR CERAMIC SMD0805 33P (AF4887)	AF4887
C19	CAPACITOR ELECTROLYTIC 47uF 25V (AF0208)	AF0208
C20	CAPACITOR ELECTROLYTIC 47uF 25V (AF0208)	AF0208
C21	CAPACITOR MYLAR 4N7 100V 10% (AF0165)	AF0165
C22	CAPACITOR CERAMIC SMD0805 33P (AF4887)	AF4887
C23	CAPACITOR CERAMIC SMD0805 33P (AF4887)	AF4887
C24	CAPACITOR CERAMIC SMD0805 NOT FITTED	NO PART
C25	CAPACITOR CERAMIC SMD0805 15P 50V (AF5034)	AF5034
C26	CAPACITOR CERAMIC SMD0805 15P 50V (AF5034)	AF5034
C27	CAPACITOR ELECTROLYTIC 47uF 25V (AF0208)	AF0208
C28	CAPACITOR ELECTROLYTIC 47uF 25V (AF0208)	AF0208
C29	CAPACITOR ELECTROLYTIC 47uF 25V (AF0208)	AF0208
C30	CAPACITOR ELECTROLYTIC 47uF 25V (AF0208)	AF0208
C31	CAPACITOR MYLAR 6N8 100V 10% (AF0588)	AF0588
C32	CAPACITOR CERAMIC SMD0805 100N 50V (AF2851)	AF2851
C33	CAPACITOR CERAMIC SMD0805 100N 50V (AF2851)	AF2851
C34	CAPACITOR POLYESTER 220NF 100V 5% (AF8165)	AF8165
C35	CAPACITOR MYLAR 6N8 100V 10% (AF0588)	AF0588
C36	CAPACITOR CAP RAD 0.200/0.300 NOT FITTED	NO PART
C37	CAPACITOR CERAMIC SMD0805 100N 50V (AF2851)	AF2851
C38	CAPACITOR CERAMIC SMD0805 100N 50V (AF2851)	AF2851
C39	CAPACITOR ELECTROLYTIC 1uF 63V (AF0210)	AF0210
C40	CAPACITOR CERAMIC SMD0805 100N 50V (AF2851)	AF2851
C41	CAPACITOR CERAMIC SMD0805 100N 50V (AF2851)	AF2851
C42	CAPACITOR CERAMIC SMD0805 100N 50V (AF2851)	AF2851
C43	CAPACITOR ELECTROLYTIC 47uF 25V (AF0208)	AF0208
C44	CAPACITOR CERAMIC SMD0805 100N 50V (AF2851)	AF2851
C45	CAPACITOR ELECTROLYTIC 47uF 25V (AF0208)	AF0208
C46	CAPACITOR CERAMIC SMD0805 100N 50V (AF2851)	AF2851
C47	CAPACITOR CERAMIC SMD0805 100N 50V (AF2851)	AF2851
C48	CAPACITOR CERAMIC SMD0805 100N 50V (AF2851)	AF2851

C49	CAPACITOR CERAMIC SMD0805 100N 50V (AF2851)	AF2851
CN1	XLR 3 PIN FEMALE WITH GROUND (AL2412)	AL2412
CN2	JACK SOCKET HORIZONTAL 6 PIN HEADPHONE()loco (AL6893)	AL6893
CN3	Connector IDC,Molex Type 0.1" Pitch 8x2 pins (AL4335)	AL4335
CN4	Connector BOX,Molex Type 0.1" Pitch 5x2 pins Male 90 Deg (AL4334)	AL4334
D1	DIODE SIGNAL SMD LL4148 (AE5343)	AE5343
D4	DIODE SIGNAL SMD LL4148 (AE5343)	AE5343
D5	DIODE SIGNAL SMD BAS16 (AE3352)	AE3352
D6	DIODE SIGNAL SMD BAS16 (AE3352)	AE3352
D7	DIODE SIGNAL SMD BAS16 (AE3352)	AE3352
D8	DIODE SIGNAL SMD BAS16 (AE3352)	AE3352
D9	DIODE SIGNAL SMD BAS16 (AE3352)	AE3352
D10	DIODE SIGNAL SMD BAS16 (AE3352)	AE3352
D11	DIODE SIGNAL SMD BAS16 (AE3352)	AE3352
LD1	LED T1 3mm YELLOW (AE0084)	AE0084
LD2	LED CYL SUN 3mm CLEAR GREEN (AE5146)	AE5146
LD3	LED CYL SUN 3mm CLEAR GREEN (AE5146)	AE5146
LD4	LED T1 3mm RED (AE0086)	AE0086
LD5	LED T1 3mm GREEN (AE0085)	AE0085
Q1	TRANSISTOR PNP 2N4403 (AE0273)	AE0273
Q2	TRANSISTOR PNP 2N4403 (AE0273)	AE0273
Q3	TRANSISTOR SMD JFET N CHANNEL MMBFJ111 (AE5523)	AE5523
Q4	TRANSISTOR NPN BC848B (AE3332)	AE3332
Q5	TRANSISTOR NPN BC848B (AE3332)	AE3332
Q6	TRANSISTOR PNP BC858B (AE3042)	AE3042
Q7	TRANSISTOR SMD JFET N CHANNEL MMBFJ111 (AE5523)	AE5523
Q8	TRANSISTOR SMD JFET N CHANNEL MMBFJ111 (AE5523)	AE5523
Q9	TRANSISTOR PNP BC858B (AE3042)	AE3042
Q10	TRANSISTOR NPN BC848B (AE3332)	AE3332
Q11	TRANSISTOR NPN BC848B (AE3332)	AE3332
R1	RESISTOR METAL SMD 1206 4k7 1% (AC6828)	AC6828
R2	RESISTOR METAL SMD 1206 4k7 1% (AC6828)	AC6828
R3	RESISTOR SMD1206 22R 1% (AC5599)	AC5599
R4	RESISTOR CARBON SMD0805 4R7 5% (AC4893)	AC4893
R5	RESISTOR METAL FILM SMD0805 470K 2% (AC2844)	AC2844
R6	RESISTOR METAL FILM SMD0805 6K8 1% (AC3064)	AC3064
R7	RESISTOR METAL FILM SMD0805 150K 1% (AC5414)	AC5414
R8	RESISTOR CARBON SMD0805 47K 5% (AC3035)	AC3035
R9	RESISTOR METAL FILM SMD0805 470K 2% (AC2844)	AC2844
R10	RESISTOR CARBON SMD0805 47K 5% (AC3035)	AC3035
R11	RESISTOR METAL FILM SMD0805 3K3 1% (AC3061)	AC3061
R12	RESISTOR CARBON SMD0805 47K 5% (AC3035)	AC3035
R13	RESISTOR METAL FILM SMD0805 6K8 1% (AC3064)	AC3064
R14	RESISTOR METAL FILM SMD0805 22K 1% (AC2842)	AC2842
R15	RESISTOR SMD1206 22R 1% (AC5599)	AC5599
R16	RESISTOR METAL FILM SMD0805 10K 1% (AC2841)	AC2841
R17	RESISTOR METAL FILM SMD0805 100K 1% (AC2843)	AC2843
R18	RESISTOR METAL FILM SMD0805 3K3 1% (AC3061)	AC3061
R19	RESISTOR METAL FILM SMD0805 3K3 1% (AC3061)	AC3061
R20	RES SMD TF 47K 0.5% 0805 MET (H1Y85RL) (AC6024)	AC6024

R21	RES SMD TF 820R 0.5% 0805 MET (H1Y83QP) (AC6010)	AC6010
R22	RES SMD TF 820R 0.5% 0805 MET (H1Y83QP) (AC6010)	AC6010
R23	RESISTOR METAL FILM SMD0805 100K 1% (AC2843)	AC2843
R24	RESISTOR CARBON SMD0805 220R 5% (AC0368)	AC0368
R25	RESISTOR METAL FILM SMD0805 1K2 1% (AC3059)	AC3059
R26	RESISTOR METAL FILM SMD0805 10K 1% (AC2841)	AC2841
R27	RESISTOR CARBON SMD0805 2K7 5% (AC4698)	AC4698
R28	RES SMD TF 1K2 0.5% 0805 MET (H1Y83TR) (AC6012)	AC6012
R29	RES SMD TF 1K2 0.5% 0805 MET (H1Y83TR) (AC6012)	AC6012
R30	RESISTOR CARBON SMD0805 47K 5% (AC3035)	AC3035
R31	RESISTOR METAL FILM SMD0805 2K2 1% (AC0370)	AC0370
R32	RESISTOR METAL FILM SMD0805 10K 1% (AC2841)	AC2841
R33	RES SMD TF 47K 0.5% 0805 MET (H1Y85RL) (AC6024)	AC6024
R34	RESISTOR METAL FILM SMD0805 10K 1% (AC2841)	AC2841
R35	RESISTOR CARBON SMD0805 39K 5% (AC3033)	AC3033
R36	RESISTOR CARBON SMD0805 47K 5% (AC3035)	AC3035
R37	RESISTOR METAL FILM SMD0805 10K 1% (AC2841)	AC2841
R38	RESISTOR METAL FILM SMD0805 2K2 1% (AC0370)	AC0370
R39	RESISTOR CARBON SMD0805 82K 5% (AC4894)	AC4894
R40	RESISTOR SMD NOT FITTED 0805	NO PART
R41	RESISTOR CARBON SMD0805 0R0 5% (AC2838)	AC2838
R42	RESISTOR METAL FILM SMD0805 10K 1% (AC2841)	AC2841
R43	RESISTOR METAL FILM SMD0805 10K 1% (AC2841)	AC2841
R44	RESISTOR CARBON SMD0805 47K 5% (AC3035)	AC3035
R45	RESISTOR METAL FILM SMD0805 10K 1% (AC2841)	AC2841
R46	RESISTOR CARBON SMD0805 68R 5% (AC4101)	AC4101
R47	RESISTOR CARBON SMD0805 47K 5% (AC3035)	AC3035
R48	RESISTOR METAL FILM SMD0805 10K 1% (AC2841)	AC2841
R49	RESISTOR METAL FILM SMD0805 10K 1% (AC2841)	AC2841
R50	RESISTOR METAL FILM SMD0805 10K 1% (AC2841)	AC2841
R51	RESISTOR METAL FILM SMD0805 10K 1% (AC2841)	AC2841
R52	RESISTOR METAL FILM SMD0805 100K 1% (AC2843)	AC2843
R53	RESISTOR METAL FILM SMD0805 100K 1% (AC2843)	AC2843
R54	RESISTOR CARBON SMD0805 5K6 5% (AC4106)	AC4106
R55	RESISTOR CARBON SMD0805 22K 5% (AC3540)	AC3540
R56	RESISTOR CARBON SMD0805 2K7 5% (AC4698)	AC4698
R57	RESISTOR CARBON SMD0805 2K7 5% (AC4698)	AC4698
R58	RESISTOR CARBON SMD0805 5K6 5% (AC4106)	AC4106
R59	RESISTOR CARBON SMD0805 5K6 5% (AC4106)	AC4106
R60	RESISTOR CARBON SMD0805 22K 5% (AC3540)	AC3540
R61	RESISTOR METAL FILM SMD0805 1K0 1% (AC0369)	AC0369
R62	RESISTOR METAL FILM SMD0805 100K 1% (AC2843)	AC2843
R63	RESISTOR METAL FILM SMD0805 22K 1% (AC2842)	AC2842
R64	RES SMD 15K 1% 0805 METAL FILM AC5050	AC5050
R65	RESISTOR METAL FILM SMD0805 4K7 1% (AC3062)	AC3062
R66	RESISTOR METAL FILM SMD0805 10K 1% (AC2841)	AC2841
R67	RES SMD 56K 1% 0805 METAL FILM AC5051	AC5051
R68	RESISTOR CARBON SMD0805 47K 5% (AC3035)	AC3035
R69	RESISTOR METAL FILM SMD0805 20K 1% (AC5057)	AC5057
R70	RESISTOR METAL FILM SMD0805 100K 1% (AC2843)	AC2843

R71	RESISTOR CARBON SMD0805 2K7 5% (AC4698)	AC4698
R72	RESISTOR METAL FILM SMD0805 10K 1% (AC2841)	AC2841
R73	RESISTOR CARBON SMD0805 1K8 1% (AC3060)	AC3060
R74	RESISTOR METAL FILM SMD0805 1M0 1% (AC2904)	AC2904
R75	RESISTOR CARBON SMD0805 82K 5% (AC4894)	AC4894
R76	RESISTOR CARBON SMD0805 39K 5% (AC3033)	AC3033
R77	RESISTOR METAL FILM SMD0805 4M7 1% (AC5586)	AC5586
R78	RESISTOR METAL FILM SMD0805 10K 1% (AC2841)	AC2841
R79	RESISTOR METAL FILM SMD0805 10K 1% (AC2841)	AC2841
R80	RESISTOR CARBON SMD0805 10R 5% (AC3027)	AC3027
R81	RESISTOR METAL FILM SMD0805 10K 1% (AC2841)	AC2841
R82	RESISTOR CARBON SMD0805 10R 5% (AC3027)	AC3027
R83	RESISTOR CARBON SMD0805 10R 5% (AC3027)	AC3027
R84	RESISTOR CARBON SMD0805 10R 5% (AC3027)	AC3027
R85	RESISTOR METAL FILM SMD0805 10K 1% (AC2841)	AC2841
R86	RESISTOR METAL FILM SMD0805 10K 1% (AC2841)	AC2841
SW1	SWITCH DPDT WMF LATCHING (AL6824)	AL6824
SW2	SWITCH DPDT WMF LATCHING (AL6824)	AL6824
SW3	SWITCH DPDT WMF LATCHING (AL6824)	AL6824
SW4	SWITCH DPDT WMF LATCHING (AL6824)	AL6824
SW5	SWITCH DPDT WMF LATCHING (AL6824)	AL6824
U1	IC SMD DUAL OP-AMP RC4580 (AE8921)	AE8921
U2	IC SMD DUAL OP-AMP RC4580 (AE8921)	AE8921
U3	IC SMD DUAL OP-AMP RC4580 (AE8921)	AE8921
U4	IC SMD DUAL OP-AMP RC4580 (AE8921)	AE8921
U5	IC SMD DUAL OP-AMP RC4580 (AE8921)	AE8921
U6	IC SMD DUAL OP-AMP RC4580 (AE8921)	AE8921
VR1	POT ALPS 11mm 5KRD 502RD (AI8111)	AI8111
VR2	POT ALPS 11mm 20KB C/D 203B (AI8004)	AI8004
VR3	POT ALPS 11mm 200KC X2 DUAL GANG 204C (AI8005)	AI8005
VR4	POT ALPS 11mm 20KB C/D 203B (AI8004)	AI8004
VR5	POT ALPS 11mm 20KB C/D 203B (AI8004)	AI8004
VR6	POT ALPS 11mm 20KK 203K (AI8003)	AI8003
VR7	POT ALPS 14mm 10KAC x2 C/D 103AC (AI8008)	AI8008
VR8	POT ALPS 11mm 20KK 203K (AI8003)	AI8003