

# ALLEN&HEATH

## Parts identification sheet

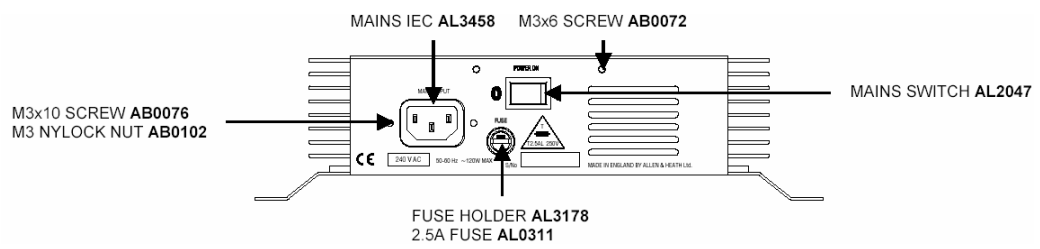
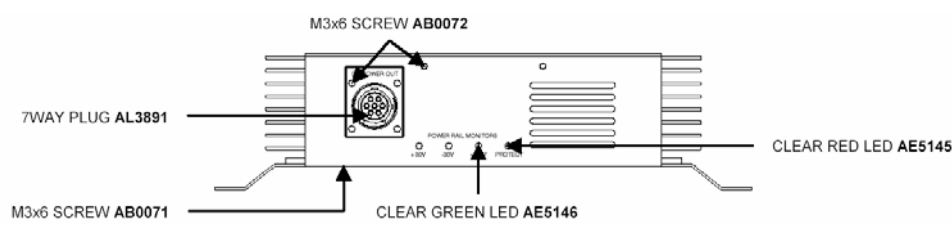
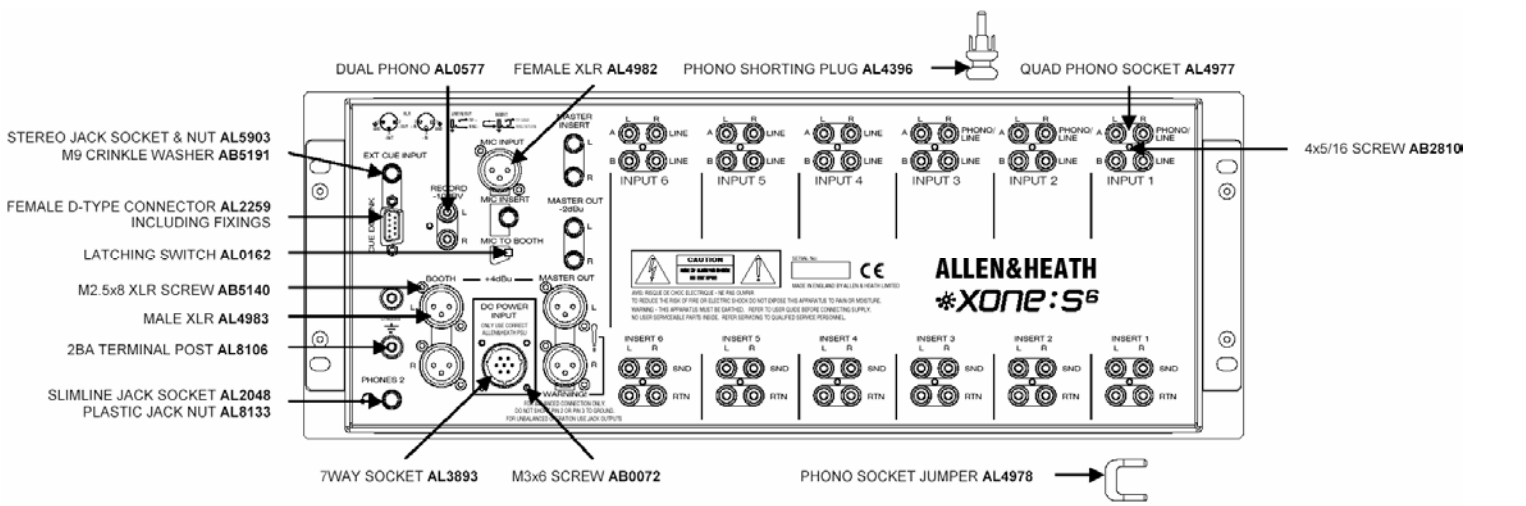
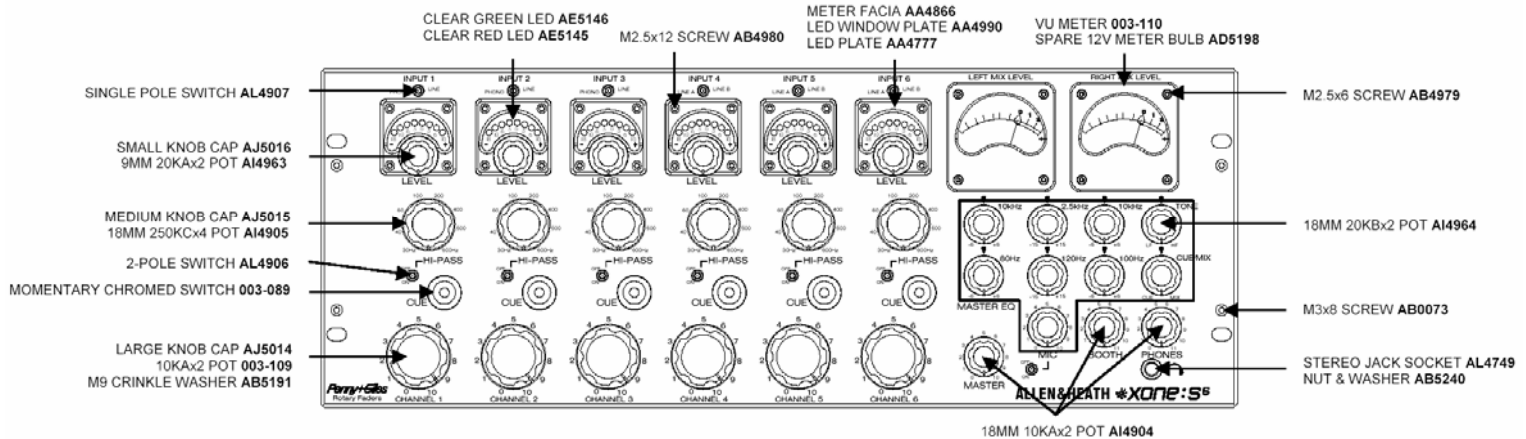
# XONE:S6

### How to order parts

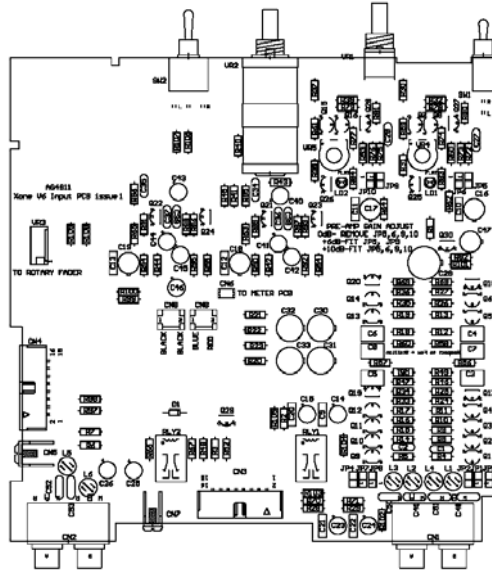
Parts must be ordered from our distributor in your territory. A list of international distributors can be viewed at <http://www.allen-heath.com/UK/distributors.asp>

UK parts must be ordered through an appointed A&H dealer or service centre. A list of UK service centres can be viewed at [http://www.allen-heath.com/UK/service\\_centres.asp](http://www.allen-heath.com/UK/service_centres.asp)

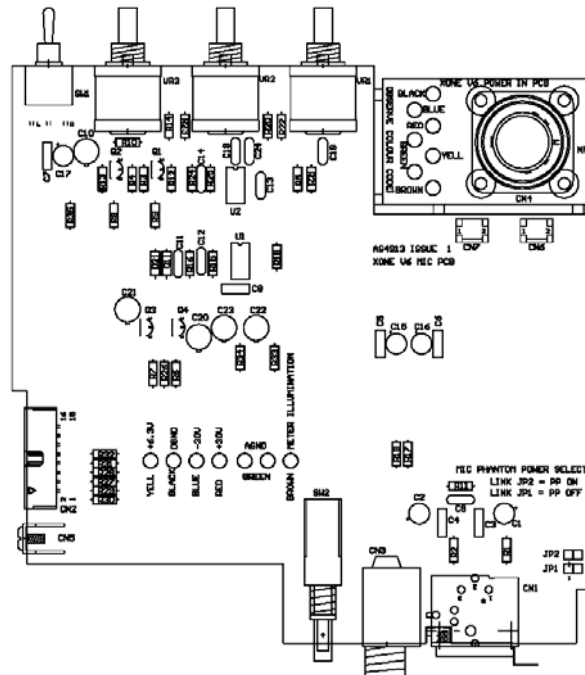
# EXTERIOR PARTS:



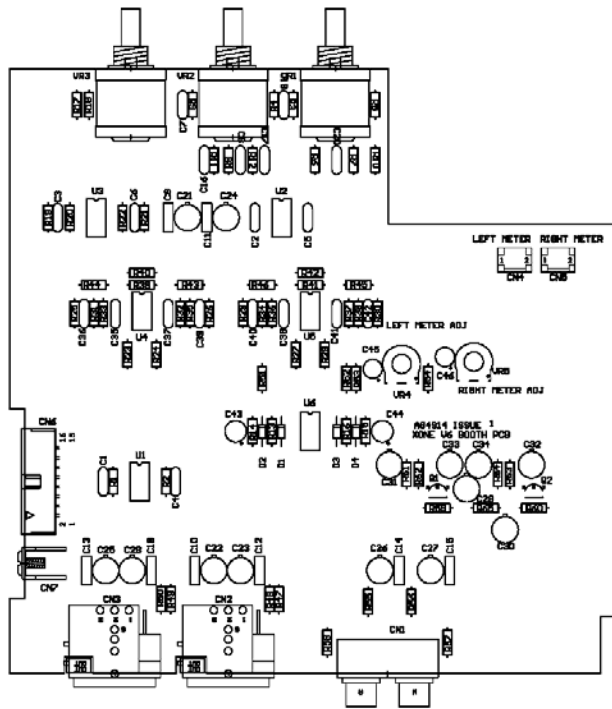
**INTERIOR PARTS:**



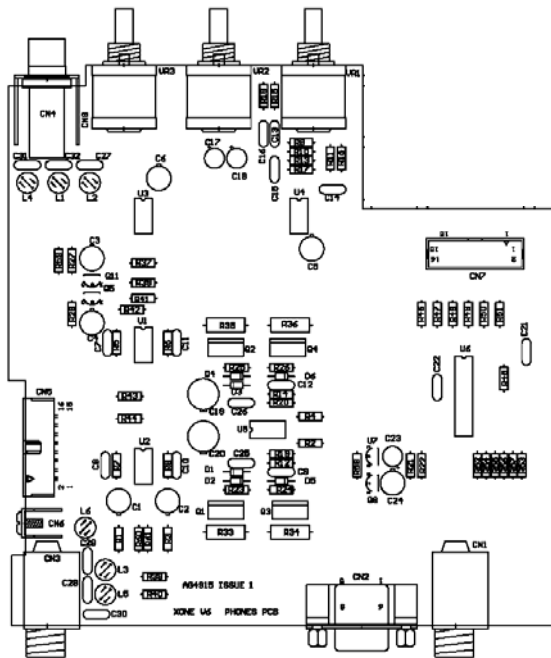
Input 003-050



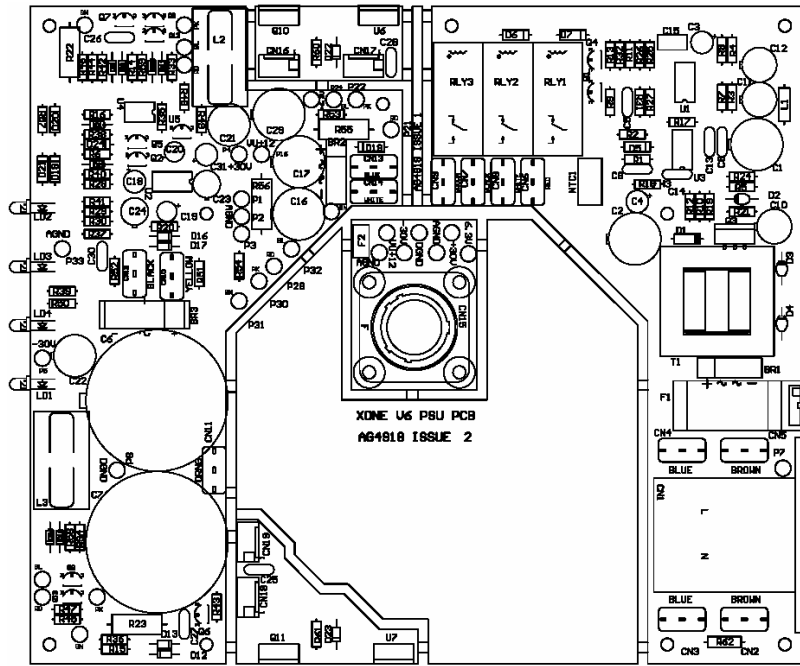
Mic & DC power socket  
003-052



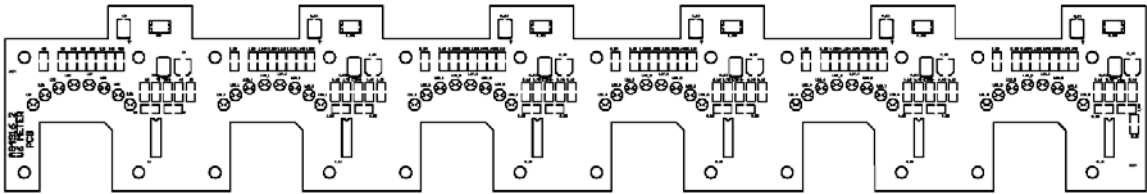
Booth 003-053



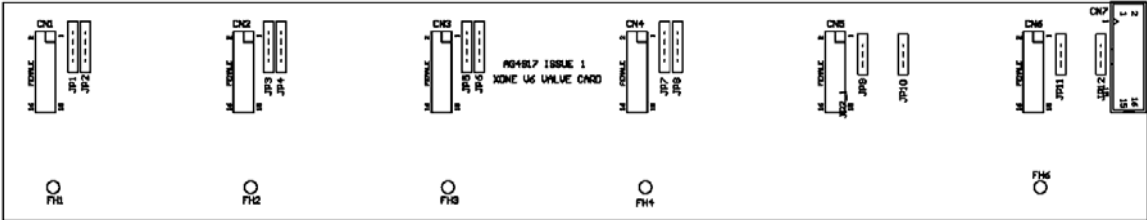
Phones 003-054



Power 003-470



Meter 003-471



Slave (valve card) 003-472