

Features

ASIO™ Features

- ASIO™ 2.2 compliant
- Supports both 32-bit and 64-bit ASIO™ host applications
- Multi-client support (multiple ASIO™ applications in parallel)
- Playback mix (simultaneous ASIO™ and WDM playback)



*ASIO™ is a trademark and software of Steinberg Media Technologies GmbH

WDM/DirectX Features

- Supports standard Windows interfaces: MME, DirectSound, WASAPI
- Stereo and multi-channel playback / recording
- Volume and mute control through Windows Mixer

System requirements

The ZEDi Windows driver v3.39 supports these Windows operating systems:

Windows 7 (32 and 64 bit)
Windows 8 (32 and 64 bit)
Windows 8.1 (32 and 64 bit)

The ZEDi Windows driver v3.40 supports:

Windows 10 (32 and 64 bit)

Note

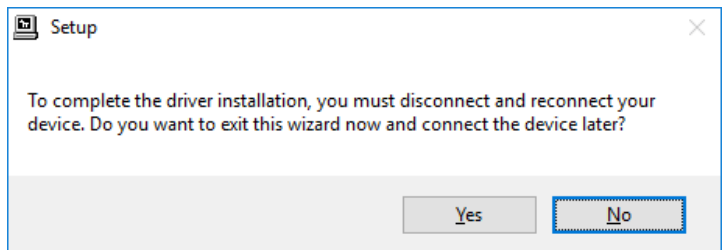
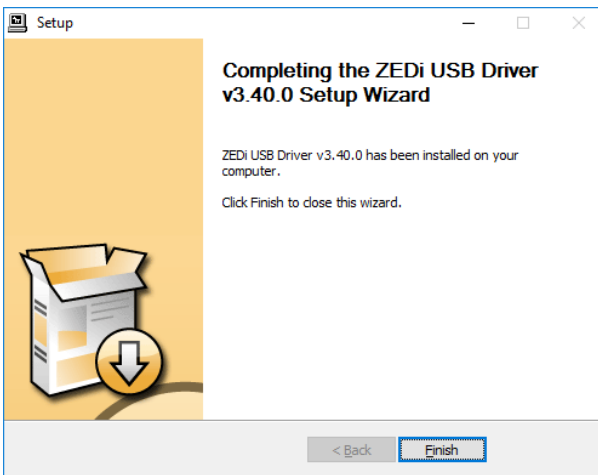
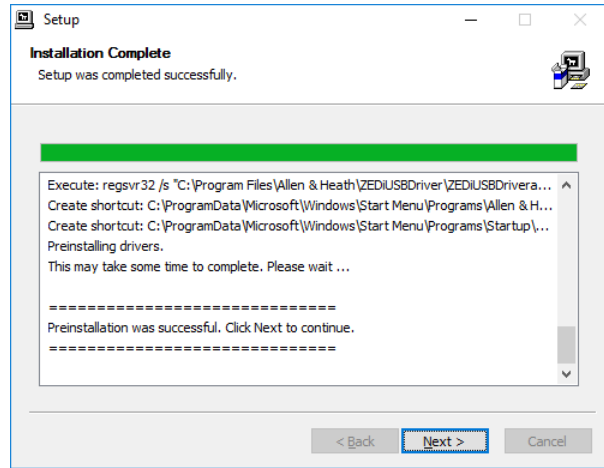
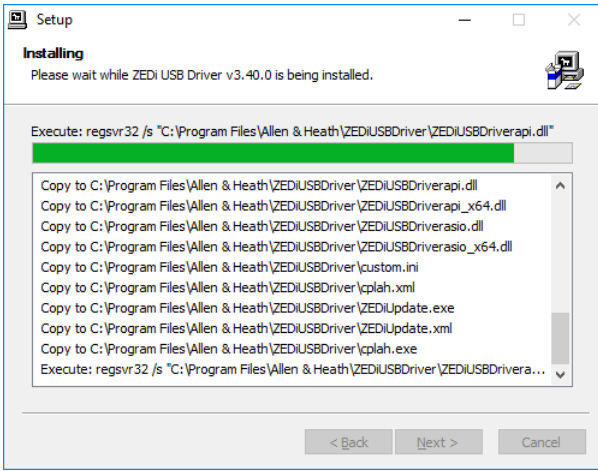
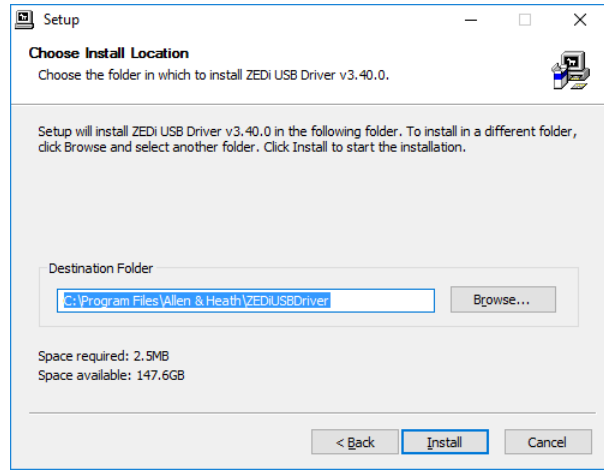
A driver is not required for Mac computers.

The minimum PC hardware requirements are as follows:

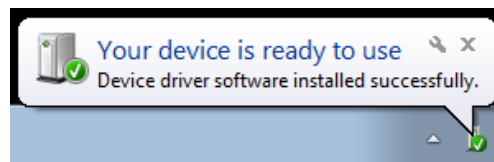
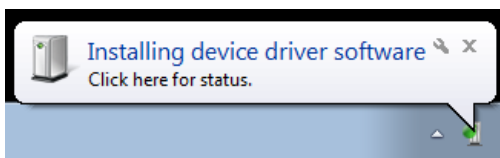
- PC or laptop manufactured after January 2006
- Intel Core 2 @1.6GHz or AMD equivalent
- 1 GB memory

Installation

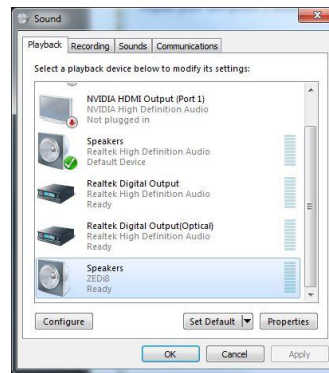
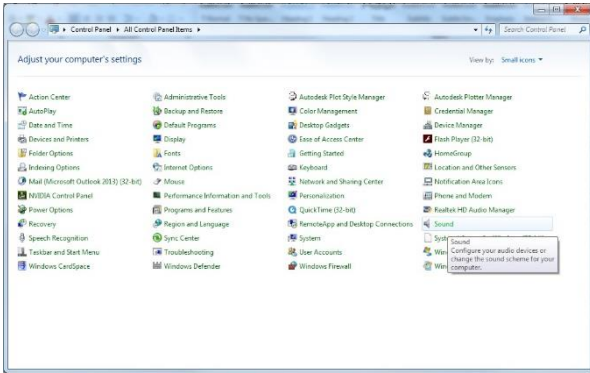
1. Download the driver installation file.
2. Connect the mixer's USB-B port to the PC with the USB A to B cable provided.
3. Switch the mixer's power on.
3. UnZip the installer and double click to run.
4. Follow the instructions on screen:



Now disconnect and reconnect your ZEDi and you should see the installation message appear in your system tray

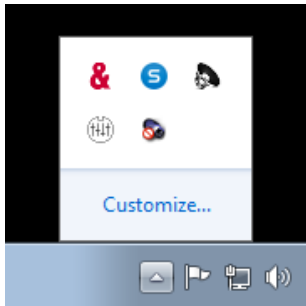


Your mixer will now show up as an audio device in Windows, and as a WDM / ASIO™ device in your DAW software.

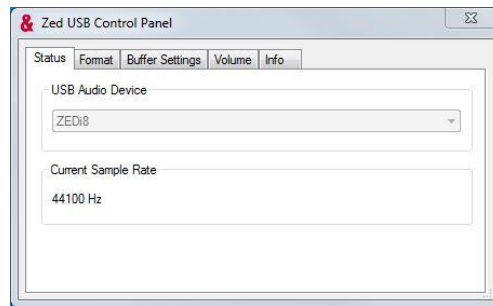


ZEDi Control Panel

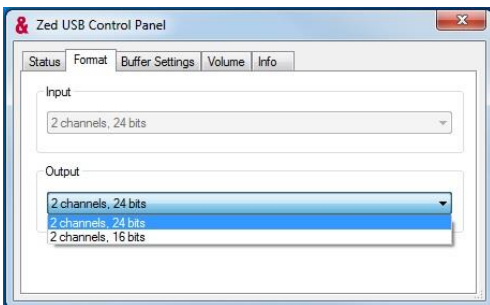
Go to the windows task bar notification area and click to show hidden icons.



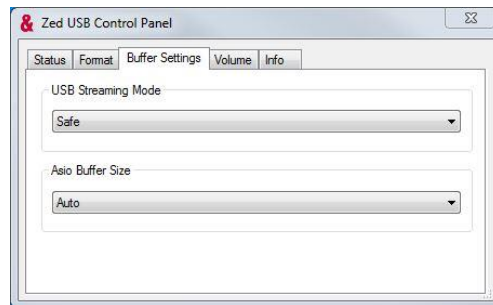
Click on the ZED USB driver tray icon



Status will show the USB Audio Device and Current Sample Rate.



Select the Audio Bit Rate under Format.



Buffer Settings can be changed for better system performance

USB Streaming Mode

Defines the buffer depth in the USB streaming layer.

This can be set to one of the following values:

- Minimum Latency = 1 ms
- Low Latency = 2 ms
- Standard = 4 ms
- Relaxed = 8 ms
- Reliable = 12 ms
- Safe = 16 ms
- Extra Safe = 32 ms

USB Streaming Mode should be adjusted according to the capabilities and performance of your computer.

If your application requires low latency i.e. for recording, switch modes gradually and test for reliable streaming. If you experience any audio dropouts, go back to a higher buffer setting where this stops.

ASIO™ Buffer Size

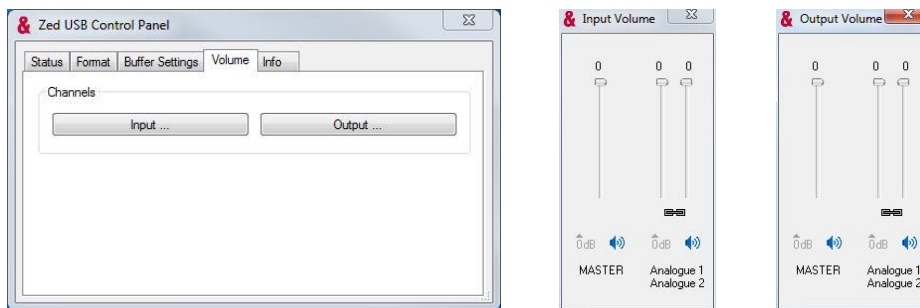
Defines the buffer size between the driver and the DAW application.

This can be set to 64, 128, 256, 512, 1,024, 2,048 or 4,096 samples.

Again, if your application requires low latency, try reducing the Buffer Size gradually. If you experience any audio dropouts, go back to a higher buffer setting where this stops.

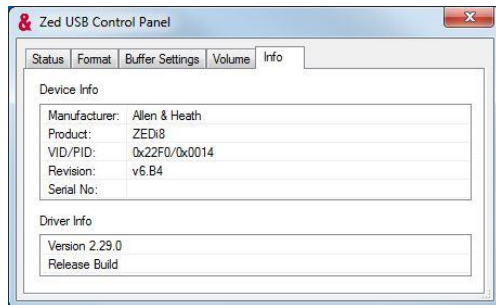
Note

The minimum ASIO™ Buffer Size allowed is dependent on the USB Streaming Mode - if the selected ASIO™ buffer is too small for the current USB Streaming Mode a warning message is displayed.



Channel Input and Output Volume can be controlled under Volume.

It's not necessary to adjust these, but it may be useful to avoid distorted sound where the application has no level control.



Info displays the mixer's Device Info. This is useful for diagnostics.

For troubleshooting or more background information please visit our Knowledge Base article [here](#).