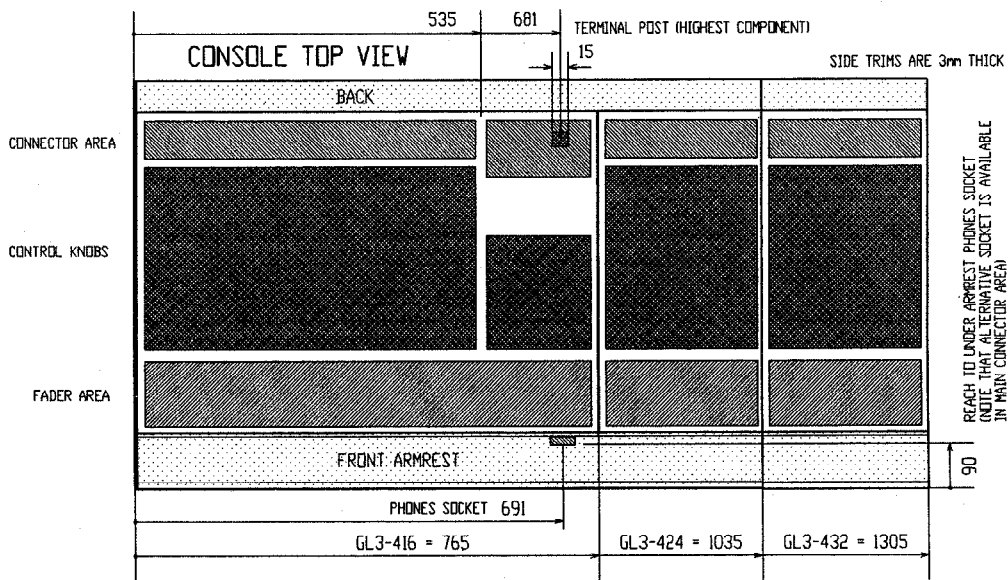
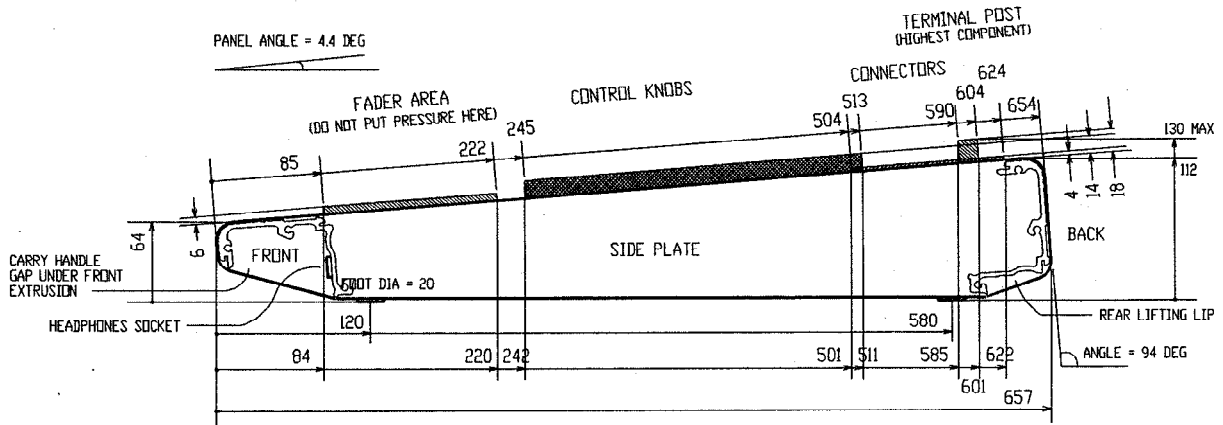


FLIGHTCASE / PLINTH INSTALLATION

Users may wish to build their console into a flightcase for touring situations, or into a purpose made plinth for permanent installation. We offer the following details to assist the flightcase or plinth maker fit the **GL3** console as required. Please note:

- We recommend that you do not fit the console into the flightcase with its side trims or front/rear extrusions removed. These support the front panel to provide a rigid chassis assembly. Without these the panel may flex causing damage to the circuit assemblies.
- Do not install the console with its base removed. This further strengthens the assembly and shields the circuits from stray electro-magnetic fields and interference.
- We recommend that the power supply unit be built into the flightcase for transit purposes only. Positioned next to the console there may be slight mains hum induction.



MPS9G POWER SUPPLY UNIT

