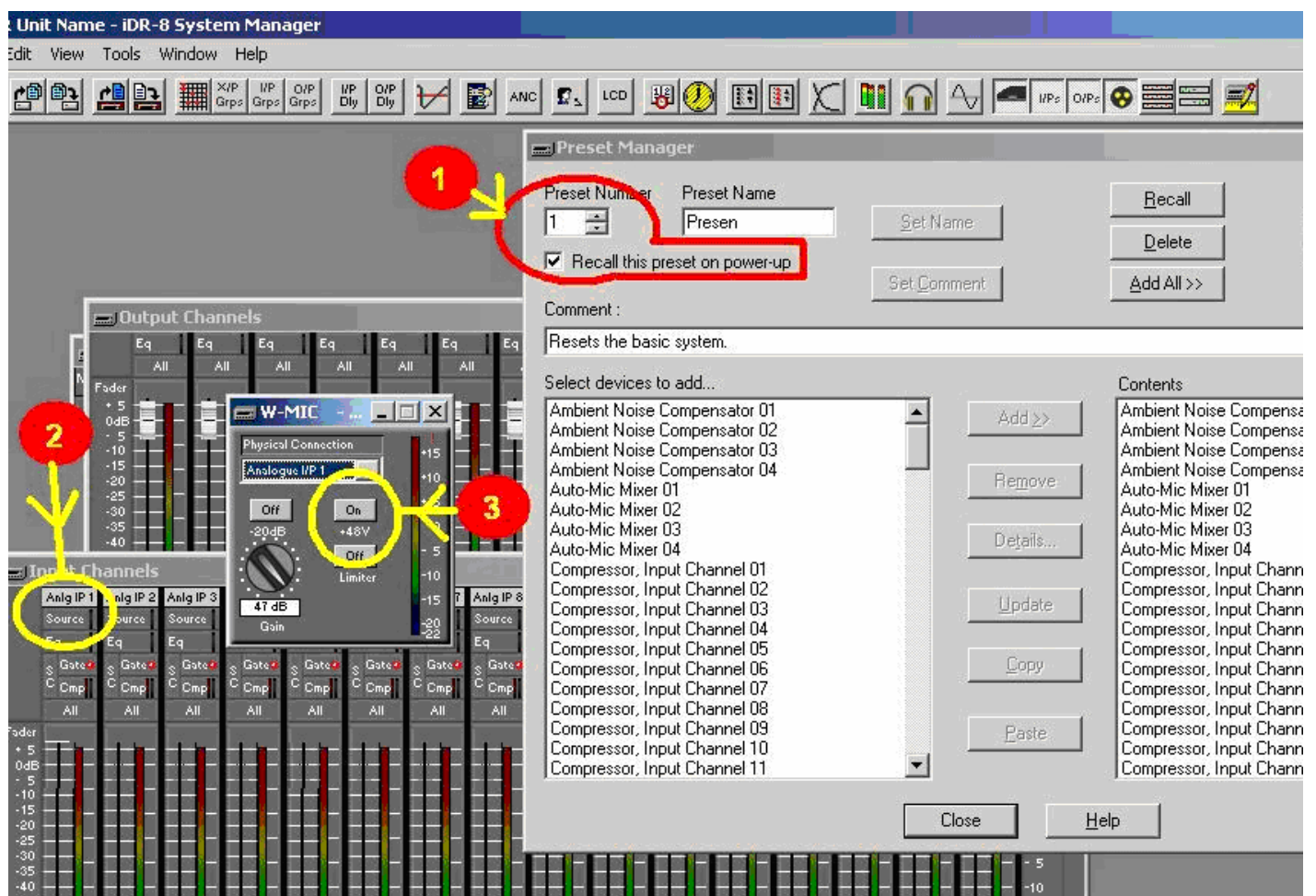


Phantom Power

Phantom power needs to be selected in the power up configuration in order to avoid pops and clicks being transmitted to the loudspeakers. Set input faders to minimum.

1. Select a preset to be recalled on power up. This preset must contain, in the *Contents* list, all elements to be used in the entire configuration. This includes activating phantom power.
2. On each channel that requires phantom power, select the *Source* window.
3. Switch phantom power ON.



Once all required channels have phantom power activated, these changes must be updated.

1. Select *Inputs Mutes and Groups* in the *Contents* list and click *Update*.
2. Ensure that all channels that have had phantom power activated are checked. In this example we have activated phantom power only on channel 1.

