

ALLEN & HEATH



QUICK START GUIDE

Publication AP7906



Limited One Year Warranty

This product is warranted to be free from defects in materials or workmanship for period of one year from the date of purchase by the original owner.

To ensure a high level of performance and reliability for which this equipment has been designed and manufactured, read this User Guide before operating. In the event of a failure, notify and return the defective unit to ALLEN & HEATH Limited or its authorised agent as soon as possible for repair under warranty subject to the following conditions

Conditions Of Warranty

The equipment has been installed and operated in accordance with the instructions in this User Guide.

The equipment has not been subject to misuse either intended or accidental, neglect, or alteration other than as described in the User Guide or Service Manual, or approved by ALLEN & HEATH.

Any necessary adjustment, alteration or repair has been carried out by ALLEN & HEATH or its authorised agent.

This warranty does not cover fader wear and tear.

The defective unit is to be returned carriage prepaid to ALLEN & HEATH or its authorised agent with proof of purchase.

Units returned should be packed to avoid transit damage.

In certain territories the terms may vary. Check with your ALLEN & HEATH agent for any additional warranty which may apply.



This product complies with the European Electro magnetic Compatibility directives 89/336/EEC & 92/31/EEC and the European Low Voltage Directives 73/23/EEC & 93/68/EEC.

This product has been tested to EN55103 Parts 1 & 2 1996 for use in Environments E1, E2, E3, and E4 to demonstrate compliance with the protection requirements in the European EMC directive 89/336/EEC. During some tests the specified performance figures of the product were affected. This is considered permissible and the product has been passed as acceptable for its intended use. Allen & Heath has a strict policy of ensuring all products are tested to the latest safety and EMC standards. Customers requiring more information about EMC and safety issues can contact Allen & Heath.

Quick Start Guide for XONE:DX with Serato ITCH AP7906

Copyright © 2010 Allen & Heath Limited. All rights reserved

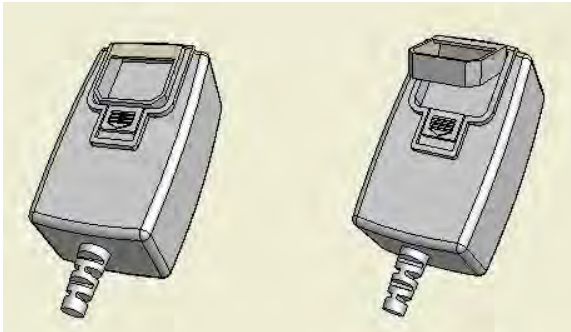
CONTENTS

Warranty.....	2
Power Supply.....	4
The XONE:DX and ITCH.....	5
Mac Software Installation.....	6
PC Software Installation.....	8

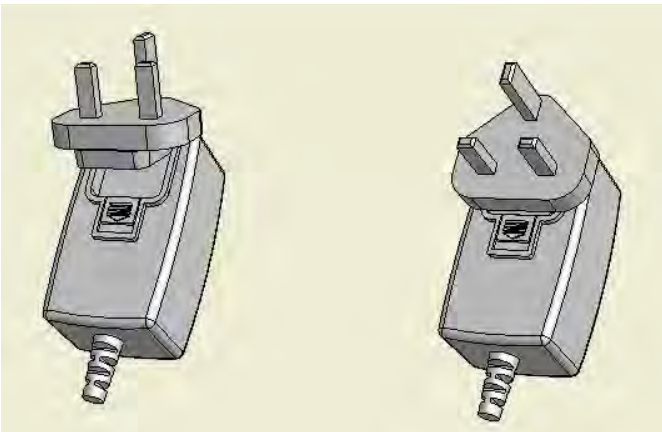
POWER SUPPLY

The Xone:DX contains its own Universal Voltage Input Power Supply unit with interchangeable heads for territory specific mains electricity outlets.

The power supply comes with a pin protector that needs to be removed before the desired head can be fitted.



To remove the pin protector, pull down on the release mechanism and pull the protector out from the bottom.



To attach the head for your territory, locate at the top first and then push down to locate and lock in the release mechanism.

THE XONE:DX AND ITCH

For a complete and comprehensive guide to using the XONE:DX with Serato ITCH, please refer to the User Guide on the installation CD.

MAC:



Insert the Serato ITCH install CD into your computers CD drive. The following window should appear.

Double click the file called *XoneDX_ITCH_X.X_Manual.pdf*.

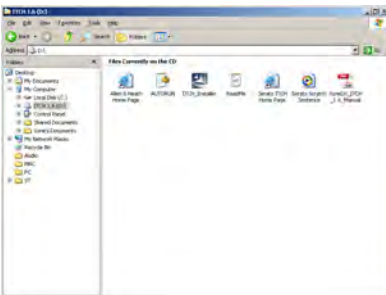
If the screen does not appear, browse to it using 'Finder' then double click the file called *XoneDX_ITCH_X.X_Manual.pdf*.

PC:



Insert the Serato ITCH install CD into your computers CD drive. The following window will appear.

If you have already installed ITCH, cancel the InstallShield Wizard.

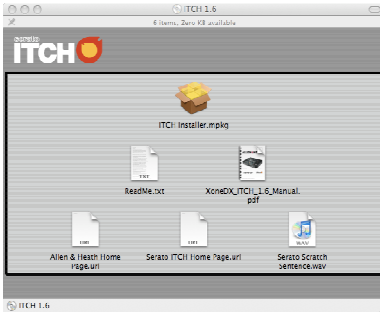


Use Windows Explorer to navigate the to the CD Drive and then open the file called *XoneDX_ITCH_X.X_Manual.pdf*.

MAC SOFTWARE INSTALLATION

Free updates to the ITCH software are available from <http://www.serato.com/itch>. We suggest you check the website for the latest version before installing.

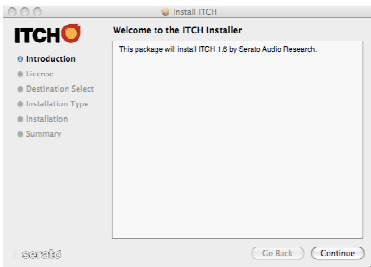
To begin installation:



Insert the Serato ITCH install CD into your computer's CD drive. The following window should appear.

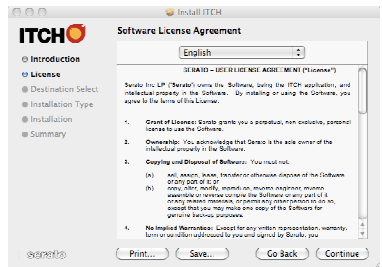
Double click the file called *ITCH installer.mpkg*.

If the screen does not appear, browse to it using 'Finder' then double click the file called *ITCH installer.mpkg*.



1. The following screen will appear. Click 'Continue'.

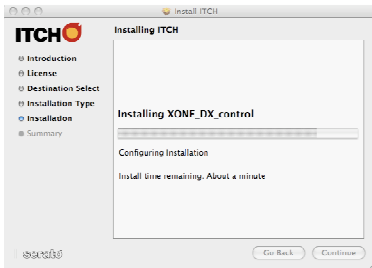
2. Accept the License Agreement and then click 'Continue'.



3. Choose your preferred installation location and then click 'Install'.

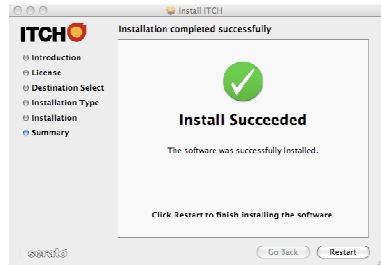


MAC SOFTWARE INSTALLATION

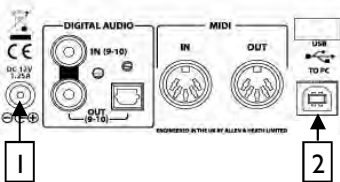


4. ITCH will now be installed.

5. A confirmation screen will appear when the install is complete. Click 'Restart' to finish the installation.



CONNECTING THE XONE:DX



Once the correct head has been attached to the power supply, plug it into the mains outlet. Next connect the DC end to the DC socket on the XONE:DX [1].

When power has been connected, the LAYER and LOAD buttons on both of the virtual decks on the XONE:DX will be illuminated. There will also be a blue LED illuminated in the PITCH display and a single LED (Red or Green dependant upon layer) illuminated in the Jogwheel surround.

Connect the 'B' end of the supplied USB cable to the USB connector on the XONE:DX [2]. Connect the 'A' end of the USB lead to your Mac.

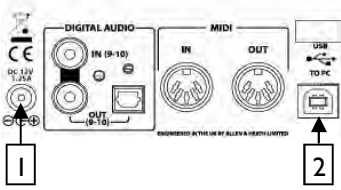
STARTING THE SOFTWARE

The ITCH software is installed in your applications folder.

To start ITCH, double click the ITCH icon in your applications folder. When the software launches ITCH will automatically detect the Allen & Heath XONE:DX.

PC SOFTWARE INSTALLATION

CONNECTING THE XONE:DX



Once the correct head has been attached to the power supply, plug it into the mains outlet. Next connect the DC end to the DC socket on the XONE:DX [1].

When power has been connected, the LAYER and LOAD buttons on both of the virtual decks on the XONE:DX will be illuminated. There will also be a blue LED illuminated in the PITCH display and a single LED (Red or Green dependant upon layer) illuminated in the Jogwheel surround.

Connect the 'B' end of the supplied USB cable to the USB connector on the XONE:DX [2]. At this stage do not connect the 'A' end of the USB lead to your PC.

INSTALLATION

Free updates to the ITCH software are available from <http://www.serato.com/itch>. We suggest you check the website for the latest version before installing.

The installer should start automatically when the install CD is inserted:

If not, browse to your CD drive using Windows Explorer and double click the file called "ITCH_installer.exe".



1. The following screen will appear as the InstallShield Wizard sets up.

PC SOFTWARE INSTALLATION



2. The following screen will appear. Click 'Next'.

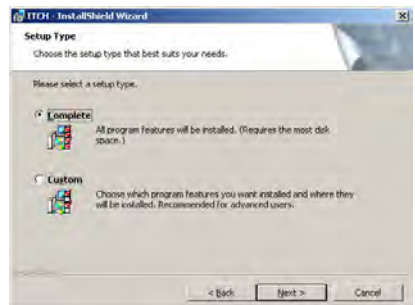
3. Read and then accept the License Agreement and then click 'Next'.



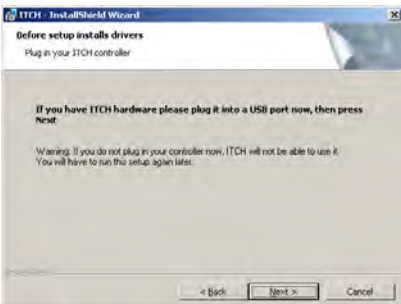
4. Choose the destination for the installation and then click 'Next'.



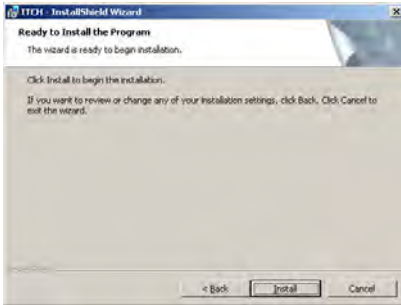
5. 'Complete' will perform a standard installation. Click 'Next' to continue.



6. Plug the 'B' end of the USB lead into your PC and then click 'Next'. During this process you may see a Windows message saying the USB device has not installed correctly—please ignore this.

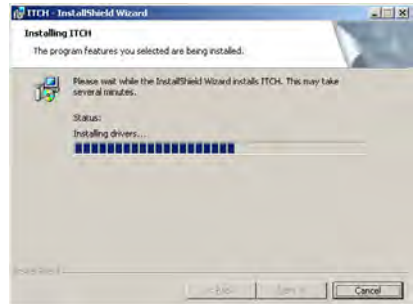


PC SOFTWARE INSTALLATION



7. Confirm the installation options and click 'Install'.

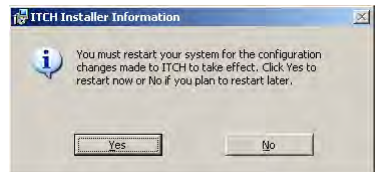
8. ITCH will now be installed.



9. A confirmation screen will appear when installation is complete.



10. Click 'Yes' to restart your computer.



STARTING THE SOFTWARE

The ITCH software is installed in the following location:

WINDOWS XP: Start > All Programs > Serato > ITCH

WINDOWS VISTA / 7: Windows Menu > All Programs > Serato > ITCH

To start ITCH, browse your START menu and click the ITCH icon. When the software launches ITCH will automatically detect the Allen & Heath XONE:DX if connected.

NOTE: When using your XONE:DX you must use the same USB port that was used during installation.

Allen & Heath Quick Start Guide for XONE:DX with Serato ITCH